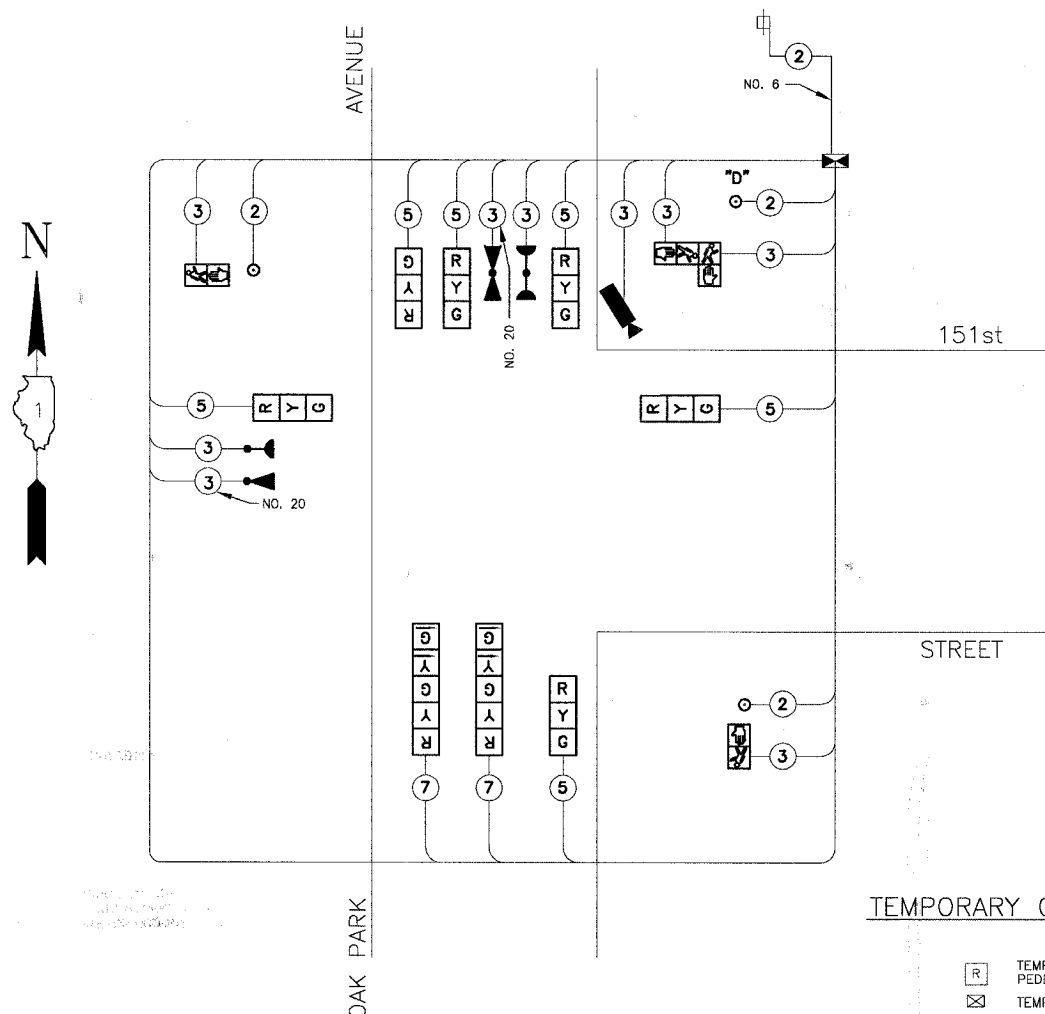


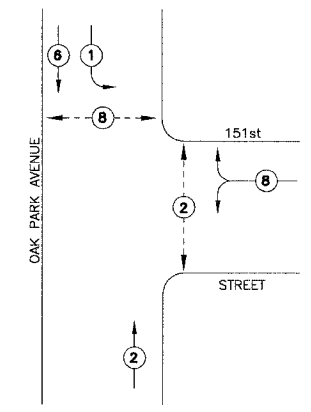
| | | | | |
|-----------------------|----------------|--------|-----------------|-----------|
| F.A.P. ROUTE NO. | SECTION | COUNTY | TOTAL SHEETS | SHEET NO. |
| 2774 | 99-00073-00-WR | COOK | 116 | 75 |
| STA. | TO STA. | | | |
| FED. ROAD DIST. NO. 1 | ILLINOIS | | FED AID PROJECT | |
| CONTRACT NO. 83727 | | | CMM-7003 (750) | |



TEMPORARY CABLE DIAGRAM

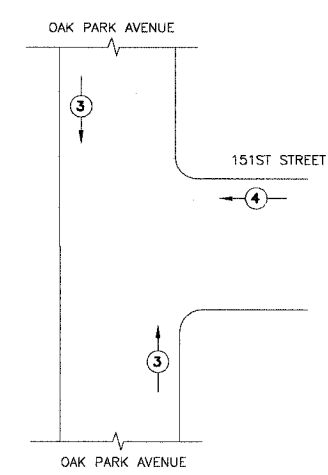
NOTES:
PUSHBUTTON "D" SHALL PLACE A CALL IN PHASES 2 AND 8

CONTROLLER SEQUENCE



LEGEND
 ○ DUAL ENTRY PHASE
 ○ PEDESTRIAN PHASE
 * NUMBER REFERS TO ASSOCIATED PHASE

TEMPORARY PHASE DESIGNATION DIAGRAM



| PROPOSED EMERGENCY VEHICLE PREEMPTORS | | |
|---------------------------------------|---|---|
| EMERGENCY VEHICLE PREEMPTORS | 3 | 4 |
| MOVEMENT | ↑ | → |

TEMPORARY EMERGENCY VEHICLE PREEMPTION SEQUENCE

TEMPORARY CABLE DIAGRAM LEGEND

- TEMPORARY TRAFFIC SIGNAL SECTION OR PEDESTRIAN SIGNAL SECTION 12"
- TEMPORARY CONTROLLER CABINET
- TEMPORARY SERVICE INSTALLATION
- ⑤ INDICATES NUMBER OF CONDUCTORS IN CABLE. ALL CONDUCTORS TO BE NUMBER 14 AWG WIRE UNLESS OTHERWISE NOTED.
- ▶ EMERGENCY VEHICLE LIGHT DETECTOR
- ▶ CONFIRMATION BEACON
- VEHICLE DETECTOR, INDUCTION LOOP
- PEDESTRIAN PUSHBUTTON DETECTOR
- 12" PEDESTRIAN SIGNAL SECTION
- MICROWAVE VEHICLE SENSOR

LEGEND

| I.D.O.T. TRAFFIC SIGNAL INSTALLATION ELECTRICAL SERVICE REQUIREMENTS | | | | |
|--|----------|-----------|--------------|---------------|
| TYPE | NO LAMPS | x WATTAGE | x %OPERATION | TOTAL WATTAGE |
| SIGNAL (RED) | 9 | 17 | 0.50 | 77 |
| (YELLOW) | 9 | 25 | 0.25 | 56 |
| (GREEN) | 9 | 15 | 0.25 | 34 |
| ARROW | 4 | 12 | 0.10 | 5 |
| PED. SIGNAL | 25 | 25 | 1.00 | 100 |
| CONTROLLER | 100 | 100 | 1.00 | 100 |
| ILLUM. SIGN | 40 | 40 | 0.50 | 20 |
| STREET LIGHTS | 250 | 250 | 0.50 | 125 |
| FLASHER | 1 | 1 | 0.50 | 0.50 |
| TOTAL | | | | 372 |

ENERGY COSTS BILLED TO DISTRICT 1
 DISTRICT 1
 WEST CENTER COURT
 CHALMERS, IL 60196-0196

ENERGY SUPPLY CONTACT: JULIE SNOW
 PHONE: 1-866-639-3532
 COMPANY: COMMONWEALTH EDISON

| REVISIONS | |
|-----------|---------|
| NAME | DATE |
| RWL | 7-1-04 |
| RWL | 10-1-04 |
| | |
| | |
| | |

ILLINOIS DEPARTMENT OF TRANSPORTATION
 TEMPORARY TRAFFIC SIGNAL
 CABLE AND PHASE DESIGNATION DIAGRAM
 OAK PARK AVENUE AT
 151ST STREET

SCALE: NONE
 DATE: 6-1-04

DRAWN BY: UKB
 DESIGNED BY: RWL
 CHECKED BY: RWL

C:\land Projects\2004\MOBILE-DWGS\OAKPARK\DWGS\20146-CABLE.dwg
 Plotted: 4-29-05 @ 7:46pm By: 231.kbb
 Copyright © 2004, By Boxer & Woodman, Inc.
 State of Illinois - Professional Design Firm
 License No. - 184-001121 - Expires 4-30-05