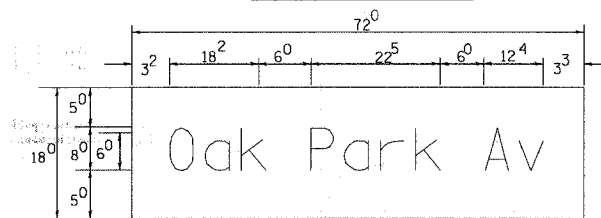
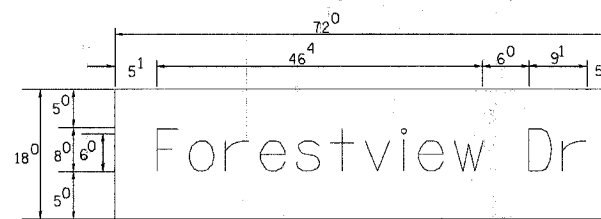


*REF-
*REF-
*REF-

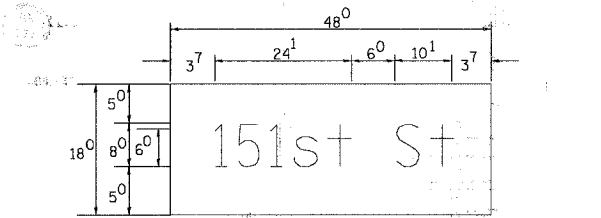
PANEL SIGN DESIGN TYPE 1



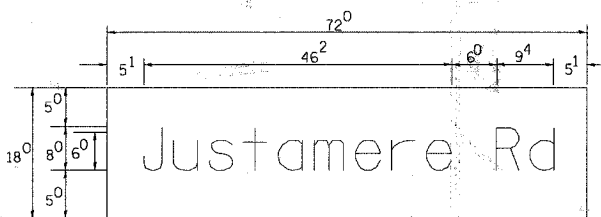
____ Sq. M. each
 9.0 Sq. Ft. each
 .5 Required
 Design Series_D



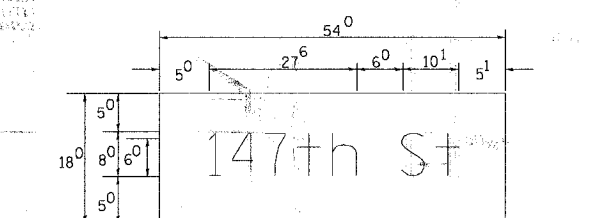
____ Sq. M. each
 9.0 Sq. Ft. each
 .2 Required
 Design Series_C



____ Sq. M. each
 6.0 Sq. Ft. each
 .2 Required
 Design Series_D



____ Sq. M. each
 9.0 Sq. Ft. each
 .2 Required
 Design Series_C



____ Sq. M. each
 6.75 Sq. Ft. each
 .1 Required
 Design Series_D

NOTE: SIGN DIMENSIONS ARE IN ENGLISH UNITS

PANEL SIGN DESIGN TYPE 2

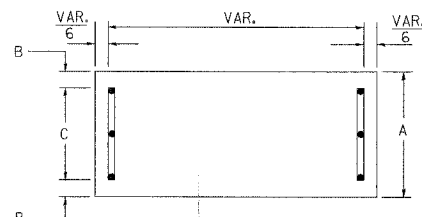
GENERAL NOTES

- WHERE MAST ARM MOUNTED STREET NAME SIGNS ARE SPECIFIED, THE MAST ARM ASSEMBLY AND POLES SHALL BE DESIGNED TO SUPPORT THE LOADINGS CALLED FOR ON STANDARDS 834001, 834006 AND 834011, AS APPLICABLE, PLUS TWO (2) SIGN PANELS 2'-6" X 6'-0" MOUNTED AS SHOWN. THE DESIGN SHALL BE IN ACCORDANCE WITH THE REQUIREMENTS OF THE CURRENT STANDARD SPECIFICATIONS FOR STRUCTURAL SUPPORTS FOR HIGHWAY SIGNS, LUMINAIRES, AND TRAFFIC SIGNALS AS PUBLISHED BY THE AMERICAN ASSOCIATION OF STATE HIGHWAY AND TRANSPORTATION OFFICIALS FOR 80 M.P.H. WIND VELOCITY.
- ALL SIGNS SHALL HAVE A WHITE REFLECTORIZED LEGEND AND BORDER ON A GREEN REFLECTORIZED BACKGROUND, TYPE A SHEETING.
- THE SIGN LENGTH SHOULD BE INCREASED IN 6-INCH INCREMENTS, BUT THE OVERALL LENGTH SHOULD NOT EXCEED 6'-0".
- ALL BORDERS SHALL BE 3/4" WIDE AND CORNER RADIUS SHALL BE 2-1/4".
- SIGNFIX ALUMINUM CHANNEL FRAMING SYSTEM SHALL BE USED FOR ALL SIGNS ATTACHED TO SIGNAL POLES AND POSTS. LOCAL SUPPLIERS OF THE SIGNFIX ALUMINUM CHANNEL FRAMING SYSTEM ARE:
 - * A.K.T. CORPORATION SCHUMBURG, IL
 - * AMERICAN FABRICATION CO. CHICAGO HEIGHTS, IL
 - * TUCKER COMPANY, INC. WAUWATOSA, WI
 - * WESTERN TRAFFIC CONTROL INC. CICERO, IL

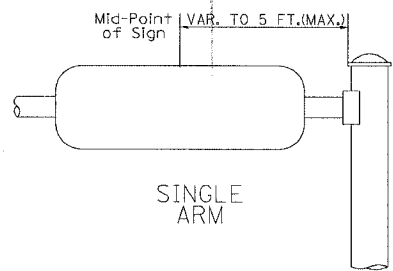
PARTS LISTING
 SIGN CHANNEL PART #P053 (MED. CHANNEL)
 SIGN SCREWS 3/8" X 14 X 1" H.W.H. #3
 SELF TAPPING WITH NEOPRENE WASHER
 BRACKETS PART #P034 (UNIVERSAL)
 CHANNEL CLAMPS WITH STAINLESS STEEL STRAPPING

OTHER BRANDS OF MOUNTING HARDWARE ARE ACCEPTABLE, BASED UPON THE DEPARTMENT'S APPROVAL AND COMPATIBILITY WITH THE CHANNEL BRACKETS OF THE ABOVE PRODUCT.

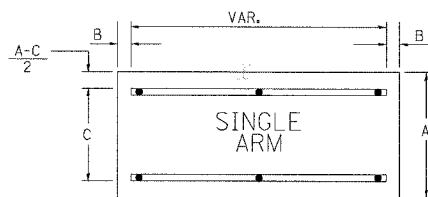
SUPPORTING CHANNELS



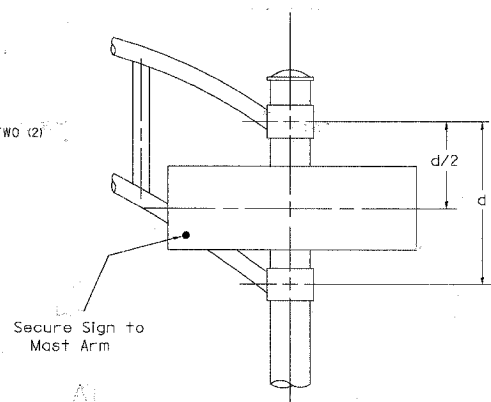
| | | |
|-----|----|-----|
| A | B | C |
| 18" | 2" | 14" |



SUPPORTING CHANNELS



| | | |
|-----|----|-----|
| A | B | C |
| 30" | 2" | 22" |



DUAL ARM

SIGNFIX ALUMINUM CHANNEL FRAMING SYSTEM
 Shall be used. See Note #5.

Upper Case To Lower Case
 Spacing Chart 8-6 Inch Series "C & D"

EXAMPLE, 2 DENOTES 3/8"

UPPER AND LOWER CASE
 LETTER WIDTHS

| SERIES | SECOND LETTER | | | | | | | | | | | | | | | |
|---------|---------------|-----|-------|----|----|----|----|----|----|----|----|----|----|----|----|----|
| | acde | | bhikl | | fw | | j | | st | | vy | | xz | | | |
| | goq | mnp | r | u | | | | | | | | | | | | |
| A W X | 12 | 14 | 14 | 15 | 12 | 14 | 06 | 10 | 11 | 14 | 06 | 10 | 11 | 12 | 12 | 14 |
| B | 14 | 15 | 20 | 21 | 14 | 15 | 11 | 12 | 14 | 15 | 12 | 14 | 12 | 14 | 16 | 17 |
| C E G | 14 | 15 | 20 | 21 | 12 | 14 | 06 | 10 | 12 | 14 | 12 | 14 | 14 | 15 | 14 | 15 |
| D O Q R | 14 | 15 | 20 | 21 | 14 | 15 | 06 | 10 | 12 | 14 | 12 | 14 | 14 | 15 | 14 | 15 |
| F | 05 | 06 | 14 | 15 | 06 | 10 | 05 | 06 | 06 | 10 | 06 | 10 | 06 | 10 | 11 | 12 |
| H I M N | 20 | 21 | 22 | 24 | 20 | 21 | 14 | 15 | 16 | 17 | 16 | 17 | 20 | 21 | 20 | 21 |
| J U | 20 | 21 | 20 | 21 | 16 | 17 | 14 | 15 | 16 | 17 | 16 | 17 | 16 | 17 | 20 | 21 |
| K L | 11 | 12 | 16 | 17 | 11 | 12 | 05 | 06 | 11 | 12 | 11 | 12 | 11 | 12 | 12 | 14 |
| P | 12 | 14 | 14 | 15 | 12 | 14 | 05 | 06 | 11 | 12 | 11 | 12 | 12 | 14 | 12 | 14 |
| S | 12 | 14 | 16 | 17 | 12 | 14 | 06 | 10 | 12 | 14 | 12 | 14 | 12 | 14 | 12 | 14 |
| T | 11 | 12 | 16 | 17 | 06 | 10 | 06 | 10 | 11 | 12 | 11 | 12 | 11 | 12 | 12 | 14 |
| V | 06 | 10 | 14 | 15 | 11 | 12 | 06 | 10 | 12 | 14 | 12 | 14 | 12 | 14 | 12 | 14 |
| Y | 05 | 06 | 14 | 15 | 06 | 10 | 05 | 06 | 05 | 07 | 05 | 06 | 06 | 10 | 11 | 12 |
| Z | 16 | 17 | 22 | 24 | 16 | 17 | 12 | 14 | 16 | 17 | 16 | 17 | 16 | 17 | 20 | 21 |

Lower Case To Lower Case
 Spacing Chart 6 Inch Series "C & D"

| SERIES | SECOND LETTER | | | | | | | | | | | | | | | |
|--------|---------------|-----|-------|----|----|----|----|----|----|----|----|----|----|----|----|----|
| | acde | | bhikl | | fw | | j | | st | | vy | | xz | | | |
| | goq | mnp | r | u | | | | | | | | | | | | |
| adhgij | 16 | 17 | 22 | 24 | 16 | 17 | 12 | 14 | 14 | 15 | 14 | 15 | 16 | 17 | 16 | 17 |
| lmnqu | 12 | 14 | 16 | 17 | 11 | 12 | 05 | 06 | 11 | 12 | 11 | 12 | 12 | 14 | 12 | 14 |
| bfkops | 12 | 14 | 16 | 17 | 12 | 14 | 06 | 10 | 12 | 14 | 12 | 14 | 12 | 14 | 12 | 14 |
| ce | 12 | 14 | 16 | 17 | 12 | 14 | 06 | 10 | 12 | 14 | 12 | 14 | 12 | 14 | 12 | 14 |
| r | 06 | 10 | 12 | 14 | 06 | 10 | 03 | 03 | 05 | 06 | 05 | 06 | 06 | 10 | 06 | 10 |
| + z | 12 | 14 | 16 | 17 | 12 | 14 | 06 | 10 | 11 | 12 | 11 | 12 | 12 | 14 | 12 | 14 |
| vy | 11 | 12 | 14 | 15 | 11 | 12 | 05 | 06 | 06 | 10 | 06 | 10 | 11 | 12 | 11 | 12 |
| w | 11 | 12 | 14 | 15 | 11 | 12 | 05 | 06 | 11 | 12 | 11 | 12 | 11 | 12 | 12 | 14 |
| x | 12 | 14 | 16 | 17 | 11 | 12 | 05 | 06 | 11 | 12 | 11 | 12 | 11 | 12 | 12 | 14 |

Number To Number
 Spacing Chart 8 Inch Series "C & D"

| SERIES | SECOND NUMBER | | | | | | | | | | | | | | | | | | | |
|--------|---------------|----|----|----|----|----|----|----|----|----|----|----|----|----|----|----|----|----|----|----|
| | 0 | | 1 | | 2 | | 3 | | 4 | | 5 | | 6 | | 7 | | 8 | | 9 | |
| 0 9 | 16 | 17 | 16 | 17 | 14 | 15 | 12 | 14 | 14 | 15 | 14 | 15 | 16 | 17 | 12 | 14 | 16 | 17 | 16 | 17 |
| 1 | 20 | 21 | 20 | 21 | 20 | 21 | 16 | 17 | 14 | 15 | 20 | 21 | 20 | 21 | 14 | 15 | 20 | 21 | 20 | 21 |
| 2 3 4 | 14 | 15 | 14 | 15 | 14 | 15 | 12 | 14 | 14 | 15 | 14 | 15 | 11 | 12 | 16 | 17 | 14 | 15 | | |
| 5 | 14 | 15 | 14 | 15 | 14 | 15 | 11 | 12 | 11 | 12 | 14 | 15 | 14 | 15 | 11 | 12 | 14 | 15 | 14 | 15 |
| 6 | 16 | 17 | 14 | 15 | 14 | 15 | 12 | 15 | 12 | 14 | 14 | 15 | 14 | 15 | 11 | 12 | 14 | 15 | 14 | 15 |
| 7 | 12 | 14 | 12 | 14 | 14 | 15 | 12 | 15 | 05 | 06 | 12 | 14 | 14 | 15 | 11 | 12 | 14 | 15 | 12 | 14 |
| 8 | 16 | 17 | 16 | 17 | 14 | 15 | 12 | 15 | 12 | 14 | 14 | 15 | 16 | 17 | 12 | 14 | 16 | 17 | 14 | 15 |

| LETTERS | 6 INCH UPPER CASE LETTERS | | 8 INCH UPPER CASE LETTERS | | 6 INCH LOWER CASE LETTERS | | |
|---------|---------------------------|--------|---------------------------|--------|---------------------------|--------|----|
| | SERIES | SERIES | SERIES | SERIES | SERIES | SERIES | |
| A | 36 | 50 | 50 | 65 | a | 35 | 42 |
| B | 32 | 40 | 43 | 53 | b | 35 | 42 |
| C | 32 | 40 | 43 | 53 | c | 35 | 41 |
| D | 32 | 40 | 43 | 53 | d | 35 | 42 |
| E | 30 | 35 | 40 | 47 | e | 35 | 42 |
| F | 30 | 35 | 40 | 47 | f | 23 | 26 |
| G | 32 | 40 | 43 | 53 | g | 35 | 42 |
| H | 32 | 40 | 43 | 53 | h | 35 | 42 |
| I | 07 | 07 | 11 | 12 | i | 11 | 11 |
| J | 30 | 36 | 40 | 50 | j | 20 | 22 |
| K | 32 | 41 | 43 | 54 | k | 35 | 42 |
| L | 30 | 35 | 40 | 47 | l | 11 | 11 |
| M | 37 | 45 | 51 | 61 | m | 60 | 70 |
| N | 32 | 40 | 43 | 53 | n | 35 | 42 |
| O | 34 | 42 | 45 | 55 | o | 36 | 43 |
| P | 32 | 40 | 43 | 53 | p | 35 | 42 |
| Q | 34 | 42 | 45 | 55 | q | 35 | 42 |
| R | 32 | 40 | 43 | 53 | r | 26 | 32 |
| S | 32 | 40 | 43 | 53 | s | 36 | 42 |
| T | 30 | 35 | 40 | 47 | t | 27 | 32 |
| U | 32 | 40 | 43 | 53 | u | 35 | 42 |
| V | 35 | 44 | 47 | 60 | v | 42 | 47 |
| W | 44 | 52 | 60 | 70 | w | 55 | 64 |
| X | 34 | 40 | 45 | 53 | x | 44 | 51 |
| Y | 36 | 50 | 50 | 66 | y | 46 | 53 |
| Z | 32 | 40 | 43 | 53 | z | 36 | 43 |

| NUMBER | 6 INCH SERIES | | 8 INCH SERIES | |
|--------|---------------|----|---------------|----|
| | C | D | C | D |
| 1 | 12 | 14 | 15 | 20 |
| 2 | 32 | 40 | 43 | 53 |
| 3 | 32 | 40 | 43 | 53 |
| 4 | 35 | 43 | 47 | 57 |
| 5 | 32 | 40 | 43 | 53 |
| 6 | 32 | 40 | 43 | 53 |
| 7 | 32 | 40 | 43 | 53 |
| 8 | 32 | 40 | 43 | 53 |
| 9 | 32 | 40 | 43 | 53 |
| 0 | 34 | 42 | 45 | 55 |

| REVISIONS | |
|---------------|-------|
| NAME | DATE |
| D.A.Z./D.A.G. | 11/90 |
| | 6/98 |
| CADD | 10/00 |

Illinois Department of Transportation
 DISTRICT 1

MAST ARM MOUNTED
 STREET NAME SIGNS

SCALE: NONE
 DATE: 7-1-04

DRAWN BY: UKB
 DESIGNED BY: RWL
 CHECKED BY: RWL

I:\CONTRACT\020116\Design_V0146-SCN1-DETS.dwg
 Plotted: 4-7-98 06:55:00 by: z31ub
 Copyright © 2004, Autodesk, Inc.
 All rights reserved.
 Autodesk reserves the right to alter product offerings and specifications at any time without notice, and is not responsible for typographical or graphical errors that appear hereon.
 11/00