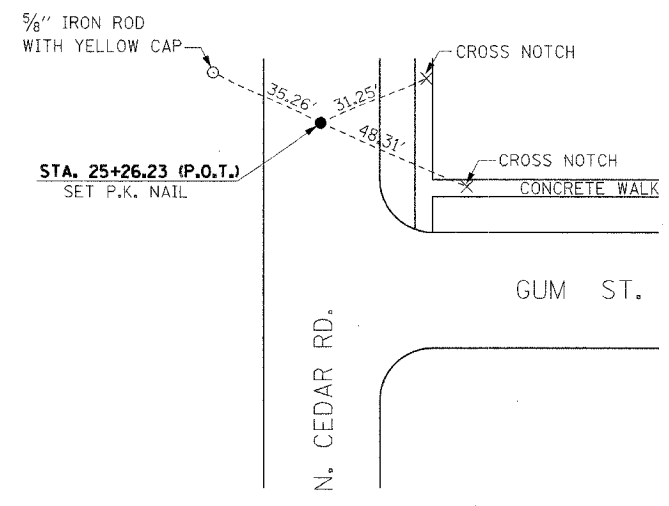
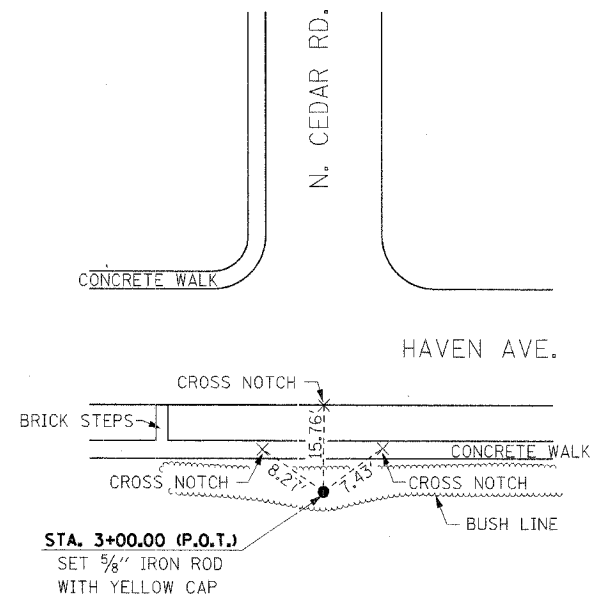


TBM "A" - El. 638.06
 SQUARE CUT ON THE NW CORNER OF CONCRETE RETAINING WALL NORTH OF AMOCO GAS STATION AT NE CORNER OF US 30 AND CEDAR RD. IN NEW LENNOX, ILLINOIS.



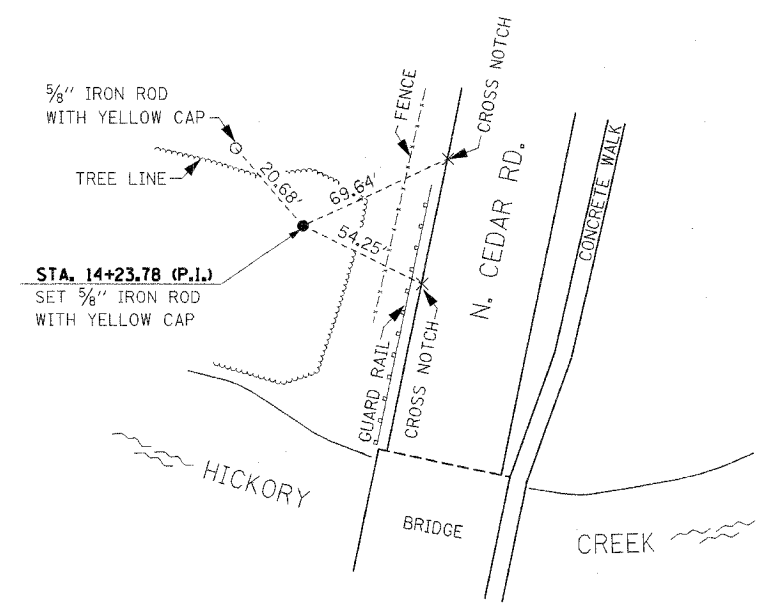
STA. 25+26.23 (P.O.T.)
 N 1767218.660
 E 1084843.310

TBM "B" - El. 669.18
 TOP OF RAILROAD SPIKE IN POWER POLE AT HAVEN AVE. AND CEDAR ROAD, 55' WEST OF THE NE CORNER OF SEC. 21-35-11 IN NEW LENNOX, ILLINOIS.

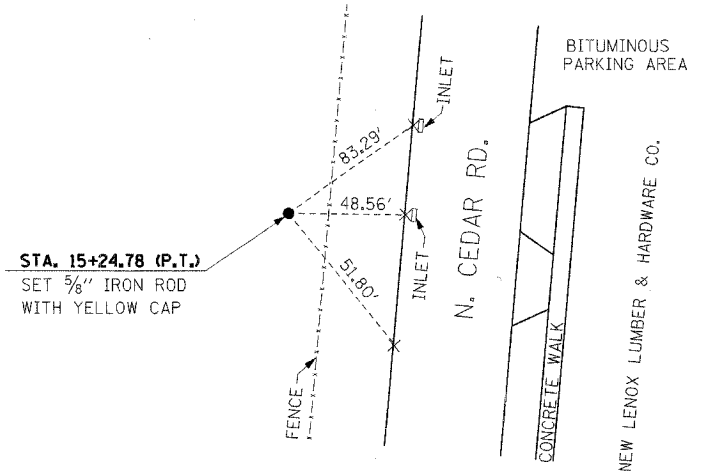


STA. 3+00.00 (P.O.T.)
 N 1765010.800
 E 1084750.950

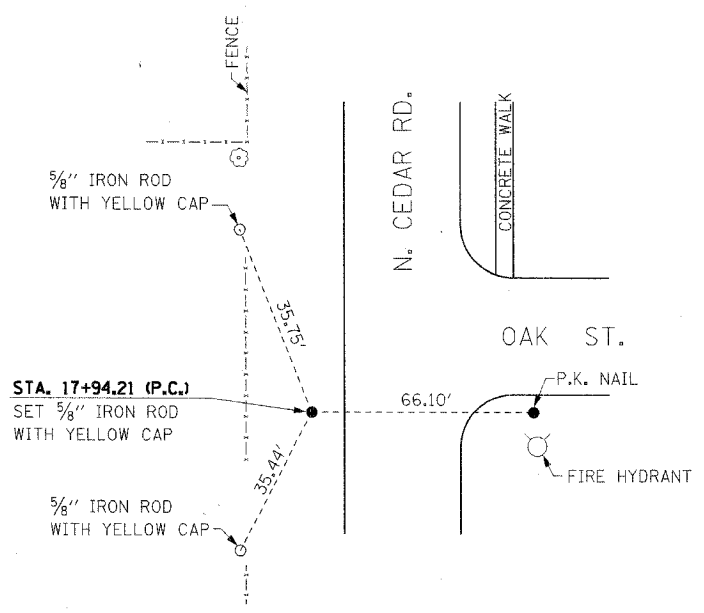
F.A.U. RITE	SECTION	COUNTY	TOTAL SHEETS	SHEET NO.
0369	97-00025-00-BR	WILL	156	19
STA.		TO STA.		
FED. ROAD DIST. NO.		ILLINOIS FED. AID PROJECT		
CONTRACT NO: 83757				



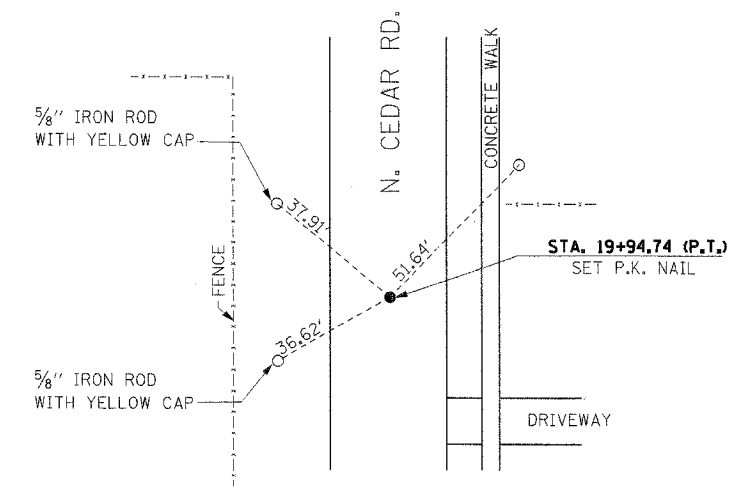
STA. 14+23.78 (P.I.)
 N 1766134.320
 E 1084726.640



STA. 15+24.78 (P.T.)
 N 1766232.460
 E 1084757.190



STA. 17+94.21 (P.C.)
 N 1766489.720
 E 1084837.290



STA. 19+94.74 (P.T.)
 N 1766687.550
 E 1084863.530

REVISIONS	
NAME	DATE

VILLAGE OF NEW LENOX
 F.A.U. (0369) CEDAR ROAD OVER HICKORY CREEK
 WILL COUNTY

ALIGNMENT, TIES & BENCHMARKS II

SCALE: NTS
 DATE: 07/01/05
 DRAWN BY: PFR
 CHECKED BY: KPS

TENG
TENG & ASSOCIATES, INC.
 ENGINEERS/ARCHITECTS/PLANNERS
 265 N. MICHIGAN AVE. CHICAGO, IL 60611
 TELEPHONE: 312.664.6000

SA:\DOCUMENT\023289\01\CIVIL\ORIGINAL\TDR\RE.DGN
 7-19-2005, 16:32:31
 ROSSPF