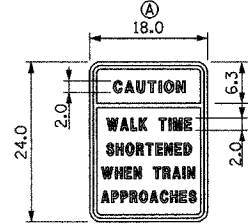


F.A.P. RTE.	SECTION	COUNTY	TOTAL SHEETS	SHEET NO.
0369	97-000-25-00 BR	WILL	156	85
STA.	TO STA.			
FED. ROAD DIST. NO.		ILLINOIS	FED. AID PROJECT	
D-91-467-97				

NOTE 1: REUSE PROPOSED HANDHOLE INSTALLED IN TEMPORARY SIGNAL INSTALLATION IN PERMANENT TRAFFIC SIGNAL INSTALLATION. SEE TEMPORARY SIGNAL PLAN SHEET.

CONTRACTOR SHALL COORDINATE PROPOSED TRAFFIC SIGNAL INSTALLATION WITH METRA

SIGN PANEL TYPE 1

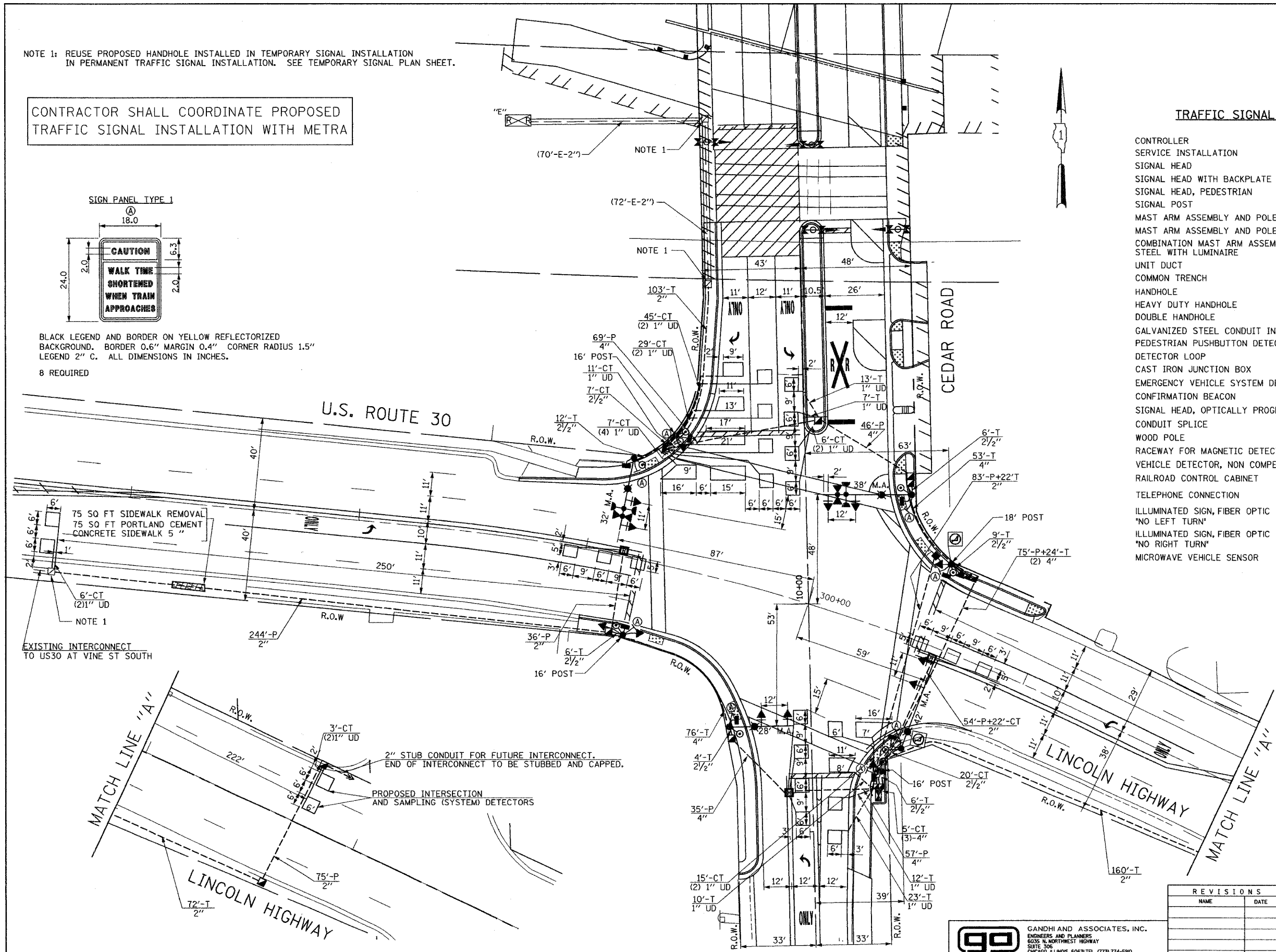
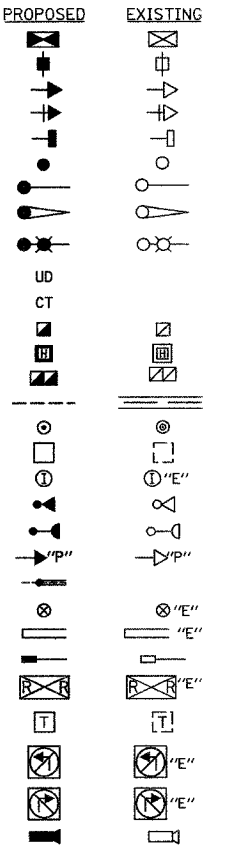


BLACK LEGEND AND BORDER ON YELLOW REFLECTORIZED BACKGROUND. BORDER 0.6" MARGIN 0.4" CORNER RADIUS 1.5" LEGEND 2" C. ALL DIMENSIONS IN INCHES.

8 REQUIRED

TRAFFIC SIGNAL LEGEND

- CONTROLLER
- SERVICE INSTALLATION
- SIGNAL HEAD
- SIGNAL HEAD WITH BACKPLATE
- SIGNAL HEAD, PEDESTRIAN
- SIGNAL POST
- MAST ARM ASSEMBLY AND POLE, STEEL
- MAST ARM ASSEMBLY AND POLE, ALUMINUM
- COMBINATION MAST ARM ASSEMBLY AND POLE, STEEL WITH LUMINAIRE
- UNIT DUCT
- COMMON TRENCH
- HANDHOLE
- HEAVY DUTY HANDHOLE
- DOUBLE HANDHOLE
- GALVANIZED STEEL CONDUIT IN TRENCH OR PUSHED
- PEDESTRIAN PUSHBUTTON DETECTOR
- DETECTOR LOOP
- CAST IRON JUNCTION BOX
- EMERGENCY VEHICLE SYSTEM DETECTOR
- CONFIRMATION BEACON
- SIGNAL HEAD, OPTICALLY PROGRAMMED
- CONDUIT SPLICE
- WOOD POLE
- RACEWAY FOR MAGNETIC DETECTOR, TYPE I OR TYPE II
- VEHICLE DETECTOR, NON COMPENSATED MAGNETIC TYPE
- RAILROAD CONTROL CABINET
- TELEPHONE CONNECTION
- ILLUMINATED SIGN, FIBER OPTIC
- "NO LEFT TURN"
- ILLUMINATED SIGN, FIBER OPTIC
- "NO RIGHT TURN"
- MICROWAVE VEHICLE SENSOR



THE TRAFFIC SIGNAL CONTROL EQUIPMENT FOR THIS PROJECT SHALL BE "EAGLE" TO MATCH THE EXISTING ADJACENT SYSTEM.

ILLINOIS DEPARTMENT OF TRANSPORTATION
TRAFFIC SIGNAL INSTALLATION
U.S. ROUTE 30 (LINCOLN HIGHWAY)
AT CEDAR ROAD

REVISIONS	
NAME	DATE

go GANDHI AND ASSOCIATES, INC.
ENGINEERS AND PLANNERS
6035 N. NORTHWEST HIGHWAY
SUITE 306
CHICAGO, ILLINOIS 60631 TEL. (773) 774-5930

SCALE: 1"=20'
DATE: JULY 20, 2005
DRAWN BY: JEK/BB
DESIGNED BY: RRM
CHECKED BY: RRM/PKG