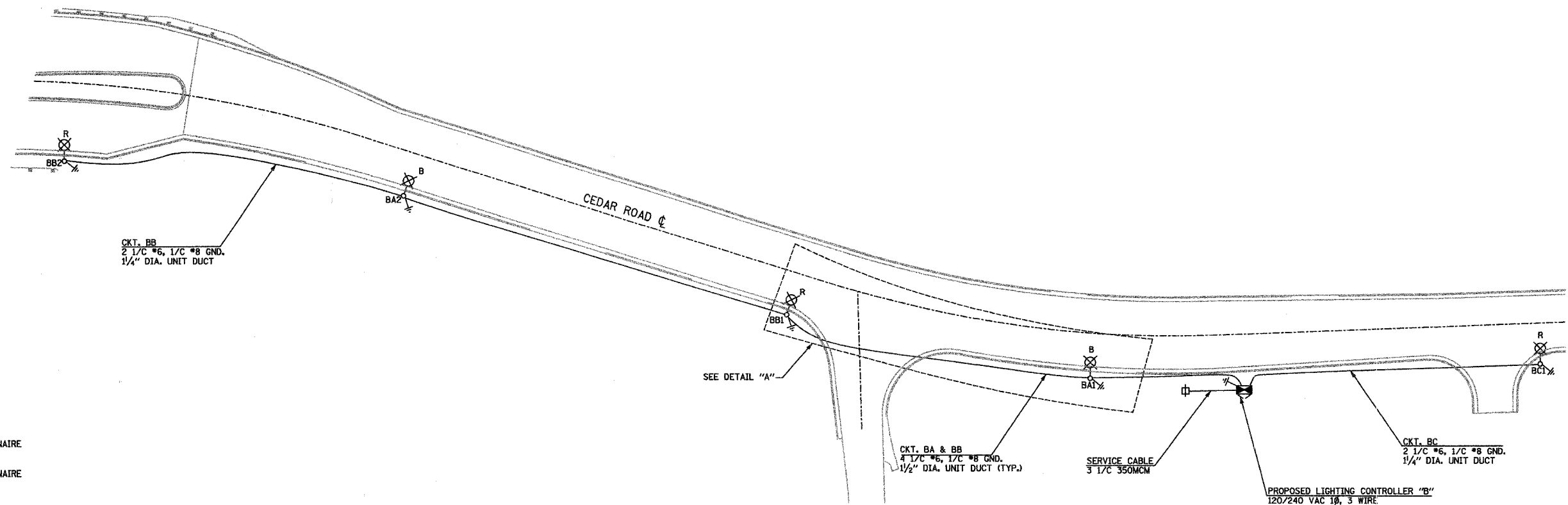


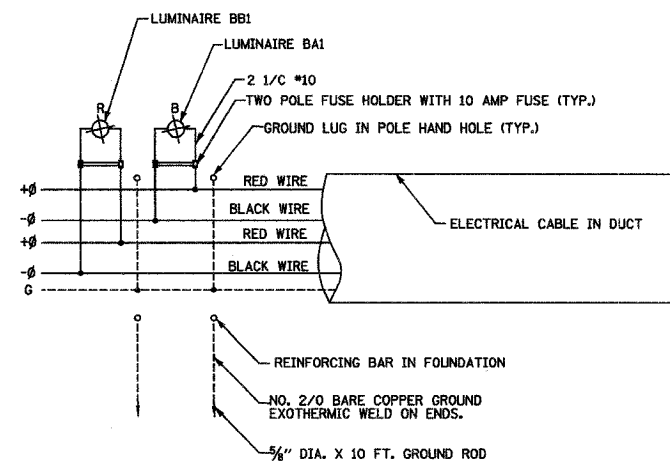
F.A.P. RTE.	SECTION	COUNTY	TOTAL SHEETS	SHEET NO
0369	97-000-25-00 BR	WILL	156	102
STA.	TO STA.			
D-91-467-97			83757	

LOAD TABLE PROPOSED LIGHTING CONTROLLER "B"					
CIRCUIT	BLACK PHASE		CIRCUIT	RED PHASE	
	AMPS	WATTS		AMPS	WATTS
A	2.6	624	B	2.6	624
			C	1.3	312
TOTAL	2.6	624	TOTAL	3.9	936



LEGEND

- LIGHTING CONTROLLER
- PROPOSED LIGHTING UNIT
40' M.H., 12' M.A., 250W HPS LUMINAIRE
(BLACK PHASE)
- PROPOSED LIGHTING UNIT
40' M.H., 12' M.A., 250W HPS LUMINAIRE
(RED PHASE)
- ELECTRIC GROUND ROD
- ELECTRIC UTILITY POLE



DETAIL "A"
LUMINAIRE WIRING CONNECTION (TYP.)

REVISIONS	
NAME	DATE

ILLINOIS DEPARTMENT OF TRANSPORTATION
US RTE. 30 AT CEDAR ROAD
SINGLE LINE DIAGRAM
PROPOSED VILLAGE LIGHTING
CONTROLLER "B"
SHEET 4 OF 4

SCALE: NONE
DATE: JULY 20, 2005

DRAWN BY: KGP/MAE
DESIGNED BY: MAE/KGP
CHECKED BY: PKG

GO GANDHI AND ASSOCIATES, INC.
ENGINEERS AND PLANNERS
6035 N. NORTHWEST HIGHWAY
SUITE 306
CHICAGO, ILLINOIS 60631 TEL. (773) 774-5990