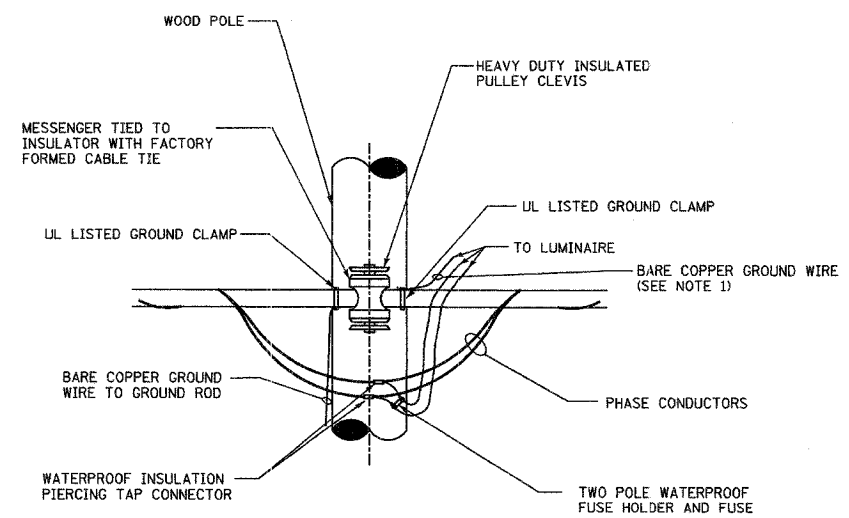


TEMPORARY LIGHT POLE DETAIL
N.T.S.

NOTES:

1. PROVIDE UL LISTED GROUND CLAMP TO CONNECT GROUND WIRE TO THE MESSENGER WIRE. THE COST OF INDICATED ITEM AND RELATED WORK SHALL BE INCLUDED IN THE COST OF GROUND ROD PAY ITEM.
2. GUY WIRE SHALL INCLUDE 8' YELLOW PLASTIC GUY GUARD WITH UV STABILIZERS.



TEMPORARY LIGHT POLE CABLE ATTACHMENT DETAIL
N.T.S.

NOTE:

1. PROVIDE UL LISTED GROUND CLAMP TO CONNECT THE GROUND WIRE TO THE MESSENGER WIRE FOR SYSTEM GROUND. THIS END OF GROUND WIRE SHALL GO TO THE LUMINAIRE TO PROVIDE A CONTINUOUS EQUIPMENT GROUND CONNECTED TO THE SYSTEM GROUND.

REVISIONS	
NAME	DATE