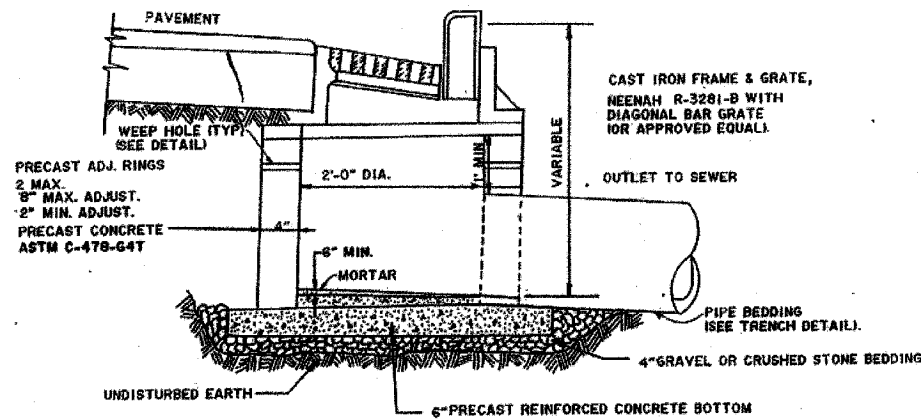
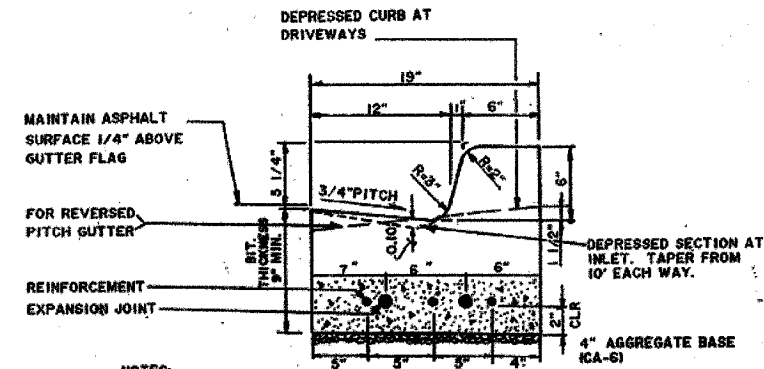




ENGINEERING SERVICES
500 N. GARY AVENUE
60188
(630) 871 - 6220

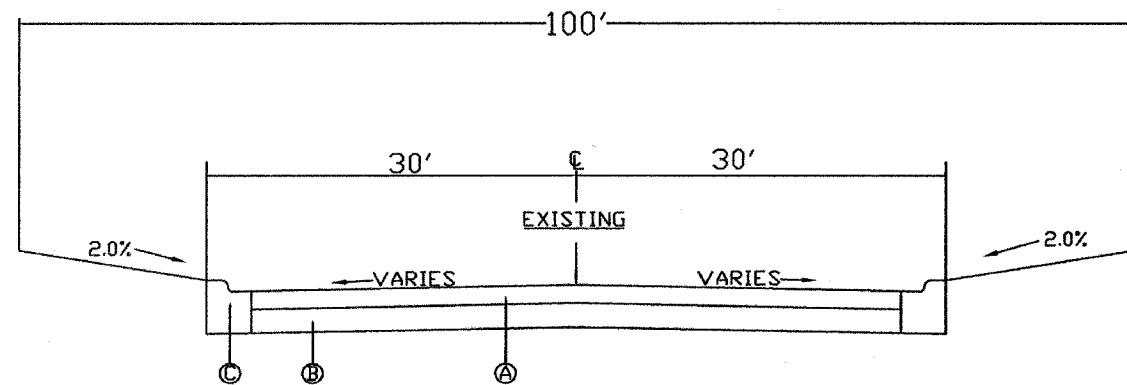


INLET DETAIL



CURB & GUTTER B-6.12

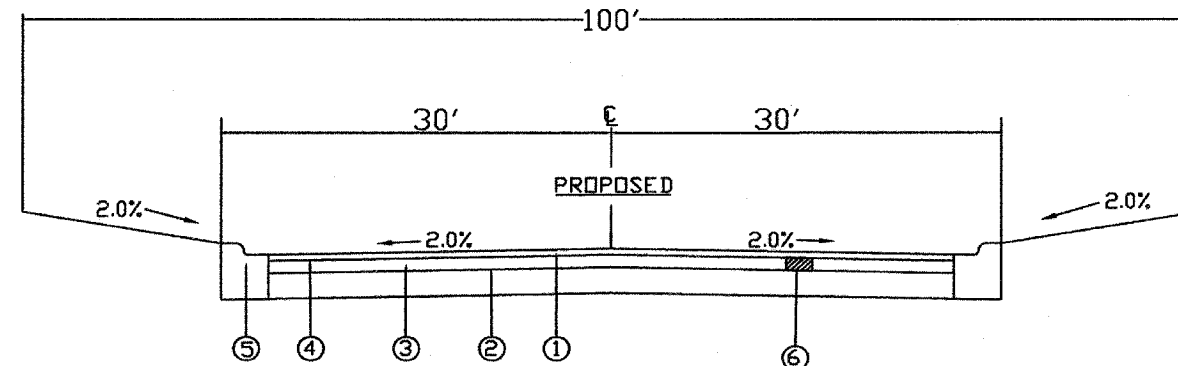
Existing R.O.W.



Existing Legend STA 100+42 - 153+60

- Ⓐ Bituminous Surface Removal (2.5")
- Ⓑ Existing Bit. Agg. Matl. Base
- Ⓒ Existing Comb. Conc. Curb & Gutter TYPE B6.12

Proposed R.O.W.



Proposed Legend STA 100+42 - 153+60

- ① Bit. Conc. Sur. Crse. SuperPave, Mix D, N70 (2.0")
 - ② Strip Reflective Crack Control Treatment
 - ③ Leveling Binder (Machine Method) SuperPave N70*
 - ④ Bit. Material (Prime Coat)
 - ⑤ Comb. Conc. Curb & Gutter
 - ⑥ CLASS D PATCH, TYPE IV, 5"
- *0.75" - 1.75" Varies to Maintain 2% Cross Slope

THE UNIT WEIGHT USED TO CALCULATE ALL BITUMINOUS SURFACE MIXTURES IS 112 LBS/YD²/IN

MIXTURE REQUIREMENTS			
MIXTURE USES	AC/PG	AIR VOIDS PERCENT	PERCENT RAP
BITUMINOUS CONCRETE SURFACE COURSE SUPERPAVE, MIX "D", N70	PG 64-22	4% @ 70 GYRATIONS	10%
LEVELING BINDER (MACHINE METHOD), SUPERPAVE N70	PG 64-22	4% @ 70 GYRATIONS	10%
CLASS D PATCHES, TYPE IV, 5", IL-19mm	PG 64-22	4% @ 70 GYRATIONS	15%

NO.	DATE	DESCRIPTION
1	12/2/2005	PER FEDERAL AID DESIGN ENGINEER
2	4/13/2006	CROSS SECTION REVISIONS

1. REFER TO EQUIPMENT MANUFACTURER'S SHOP DRAWING

PLAN SHEET DESIGNATION

- COVER
- G - GENERAL
 - H - HAZARDOUS MATERIALS
 - C - CIVIL
 - L - LANDSCAPE
 - S - STRUCTURAL
 - A - ARCHITECTURAL
 - I - INTERIORS
 - Q - EQUIPMENT
 - F - FIRE PROTECTION
 - P - PLUMBING
 - M - MECHANICAL
 - E - ELECTRICAL
 - T - TELECOMMUNICATIONS
 - R - RESOURCE

PROJECT NO.: M-8003 (552)
DWG FILE: LIES ROAD
SCALE: N/A
DRAWING DATE: 9/30/05
DESIGNED BY: JB
DRAWN BY: JB
CHECKED BY: BC
PLOTTED BY: MS

VILLAGE OF CAROL STREAM
ILLINOIS

LIES ROAD (LAPP)
PROJECT

SHEET TITLE

INLET AND CURB AND GUTTER DETAILS,
TYPICAL CROSS-SECTION