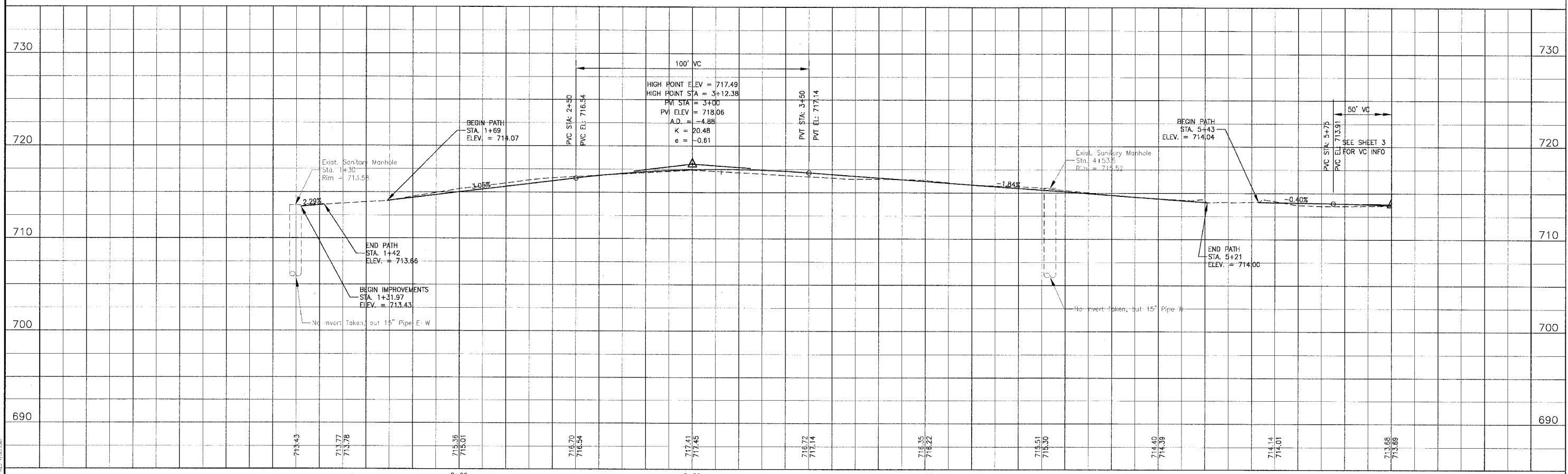
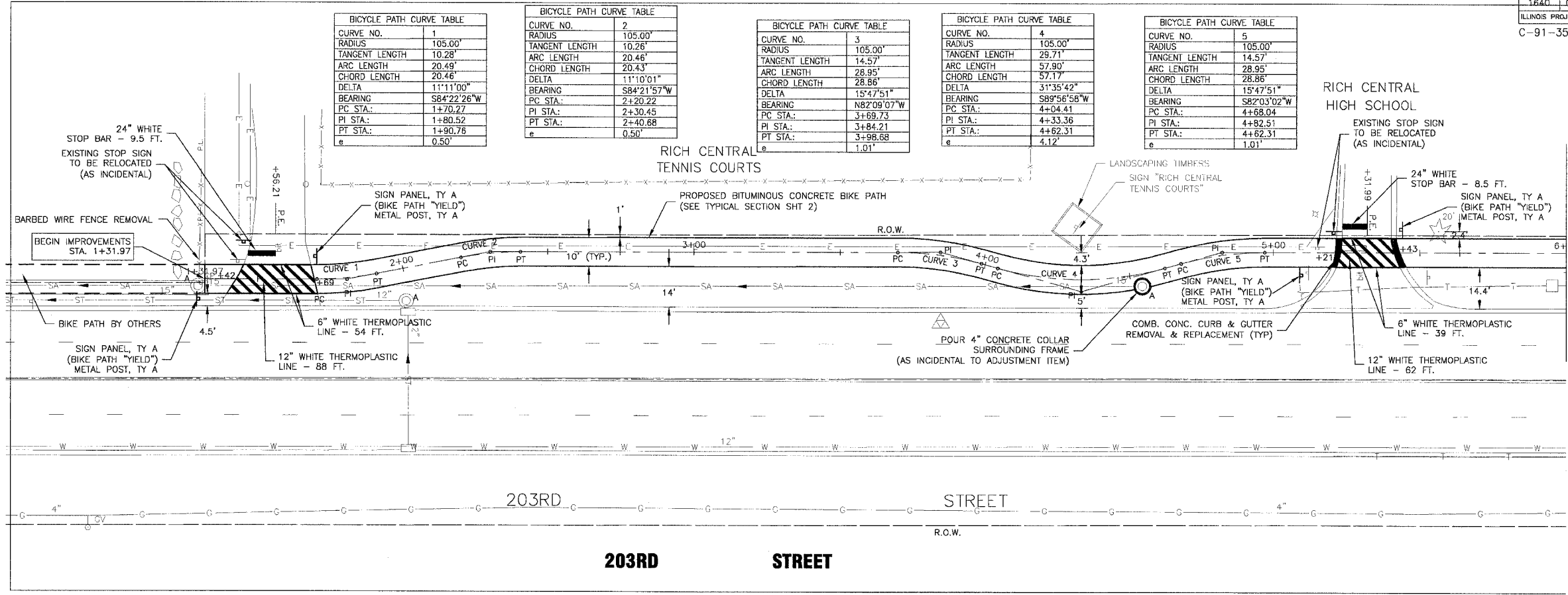


SCALE: 1" = 20'



CONSULTANTS	REV. NO.	DATE	DESCRIPTION
	1	02-27-06	PER IDOT REVIEW

\* - REFER TO EQUIPMENT MANUFACTURER'S SHOP DRAWINGS

50856BIKPRF 4/4 02-27-06 13:25

**Baxter & Woodman**  
 Crystal Lake, Illinois 815.459.1280  
 Burlington, Wisconsin 262.763.7834  
 Mokena, Illinois 708.478.2090  
 DeKalb, Illinois 815.787.3111  
 Grayslake, Illinois 847.223.5088  
 Rockford, Illinois 815.489.1551

**VILLAGE OF OLYMPIA FIELDS, ILLINOIS**  
**203RD STREET BIKEWAY**

**203rd STREET**  
**STA. 1+31.97 TO STA. 6+00**  
**PLAN AND PROFILE**

DESIGNED BY	SCALE
M.C.U.	AS NOTED
DRAWN BY	PROJECT NO.
N.J.P.	050686
CHECKED BY	SHEET NO.
N.J.P.	4 OF 12
DATE	
12-12-05	

COPYRIGHT © 2006 BY BAXTER & WOODMAN, INC.  
 LICENSE NO. 02-001131 ENGINEER C.A. 7/007