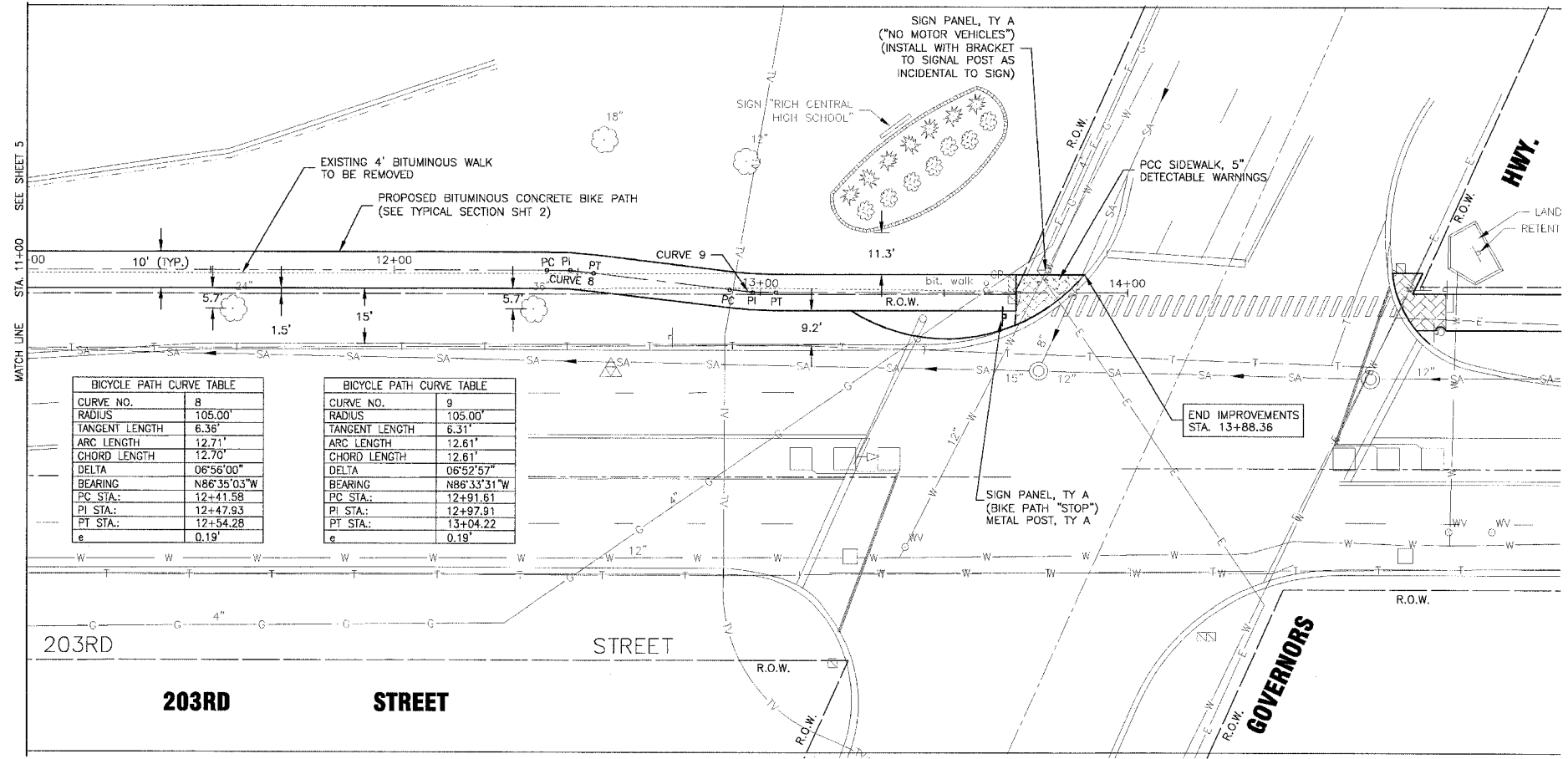


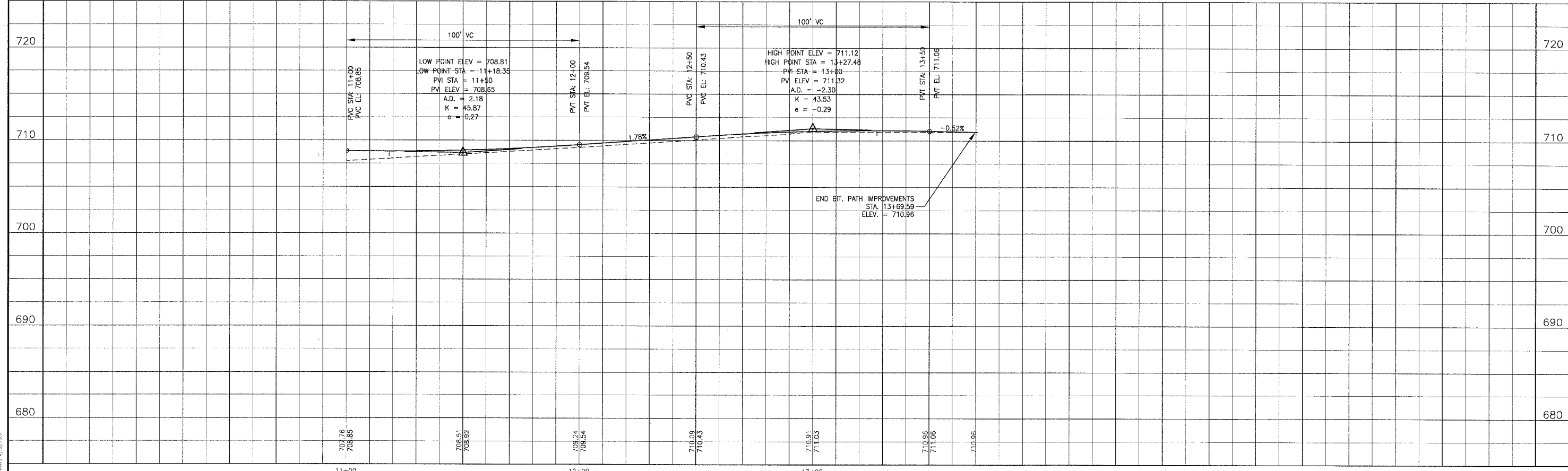


SCALE: 1" = 20'



BICYCLE PATH CURVE TABLE	
CURVE NO.	8
RADIUS	105.00'
TANGENT LENGTH	6.36'
ARC LENGTH	12.71'
CHORD LENGTH	12.70'
DELTA	06°56'00"
BEARING	N86°35'03"W
PC STA.	12+41.58
PI STA.	12+47.93
PT STA.	12+54.28
e	0.19'

BICYCLE PATH CURVE TABLE	
CURVE NO.	9
RADIUS	105.00'
TANGENT LENGTH	6.31'
ARC LENGTH	12.61'
CHORD LENGTH	12.61'
DELTA	06°52'57"
BEARING	N86°33'31"W
PC STA.	12+91.61
PI STA.	12+97.91
PT STA.	13+04.22
e	0.19'



CONSULTANTS

REV. NO. 1 DATE 02-27-06 DESCRIPTION PER IDOT REVIEW

* - REFER TO EQUIPMENT MANUFACTURER'S SHOP DRAWINGS

1" = 5' 0" 1" = 2' 3"

REV. NO.	DATE	DESCRIPTION
1	02-27-06	PER IDOT REVIEW

508823KLEPRF NJP 02-27-06 13:30

BAXTER & WOODMAN

Crystal Lake, Illinois 815.489.1200
 Burlington, Wisconsin 262.783.7834
 Mokena, Illinois 708.478.2090
 DeKalb, Illinois 815.707.3111
 Grayslake, Illinois 847.223.5088
 Rockford, Illinois 815.489.1651

VILLAGE OF OLYMPIA FIELDS, ILLINOIS

203RD STREET BIKEWAY

203rd STREET

STA. 11+00 TO STA. 14+00

PLAN AND PROFILE

DESIGNED BY	SCALE
MCU	AS NOTED
DRAWN BY	PROJECT NO.
NJP	050686
CHECKED BY	SHEET NO.
NJP	6 OF 12
DATE	
12-12-05	

COPYRIGHT © 2006 BY BAXTER & WOODMAN, INC.
 LICENSE NO. 14-00171 - PARRIS 4/20/2007