

INDEX OF SHEETS

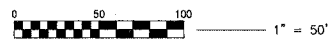
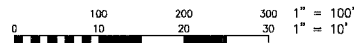
SHEET NO.	TITLE
1	COVER SHEET, INDEX OF SHEETS, HIGHWAY STANDARDS
2	LEGEND, ABBREVIATIONS, GENERAL NOTES
3	SUMMARY OF QUANTITIES, SCHEDULE OF MATERIALS, TYPICAL SECTION, BENCHMARKS, COMMITMENTS
4-6	PLAN AND PROFILE: 203RD STREET
7-8	EROSION CONTROL PLAN
9	CROSS SECTIONS
10	DISTRICT ONE DETAIL TC-13 : TYPICAL PAVEMENT MARKINGS
11	DISTRICT ONE DETAIL BD-24 : CURB AND GUTTER REMOVAL AND REPLACEMENT
12	DISTRICT ONE DETAIL BD-51 : BENCHING DETAIL FOR EMBANKMENT WIDENING

STANDARD NO. STANDARD

280001-02	TEMPORARY EROSION CONTROL SYSTEMS
424001-04	CURB RAMPS FOR SIDEWALKS
606001-02	CONCRETE CURB TYPE B AND COMBINATION CONCRETE CURB AND GUTTER
664001-01	CHAIN LINK FENCE
701606-04	URBAN LANE CLOSURE, MULTILANE, 2W, WITH MOUNTABLE MEDIAN
701701-04	URBAN LANE CLOSURE, MULTILANE INTERSECTION
701801-03	LANE CLOSURE MULTILANE 1W OR 2W CROSSWALK OR SIDEWALK CLOSURE
702001-06	TRAFFIC CONTROL DEVICES
720001	SIGN PANEL MOUNTING DETAILS
720006	SIGN PANEL ERECTION DETAILS
720011	METAL POSTS FOR SIGNS, MARKERS AND DELINEATORS
729001	APPLICATIONS OF TYPES A AND B METAL POSTS (FOR SIGNS & MARKERS)
TC-13	DISTRICT ONE DETAIL: TYPICAL PAVEMENT MARKINGS
BD-24	DISTRICT ONE DETAIL: CURB AND GUTTER REMOVAL AND REPLACEMENT
BD-51	DISTRICT ONE DETAIL: BENCHING DETAIL FOR EMBANKMENT WIDENING

THIS PROJECT IS LOCATED WITHIN THE VILLAGE OF OLYMPIA FIELDS

CALL JULIE 1-800-592-0123 WITH THE FOLLOWING:
 COUNTY = COOK
 CITY-TOWNSHIP = OLYMPIA FIELDS - RICH (AREA 31)
 SEC. & 9SEC. NO. = N.W. 1/4 OF SECTION 14
 48 HOURS BEFORE YOU DIG
 EXCLUDES: SAT., SUN. & HOLIDAYS



FULL SIZE PLANS HAVE BEEN PREPARED USING STANDARD ENGINEERING SCALES. REDUCED SIZED PLANS WILL NOT CONFORM TO STANDARD SCALES. IN MAKING MEASUREMENTS ON REDUCED SIZE PLANS, THE ABOVE SCALES SHALL BE USED.

BAXTER & WOODMAN, INC.
 STATE OF ILLINOIS - PROFESSIONAL DESIGN FIRM
 LICENSE NO. - 184-001121 - EXPIRES 4/30/2007

CONTRACT NO. 83849

COUNTY: COOK SECTION: NUMBER: 04-00023-00-BT

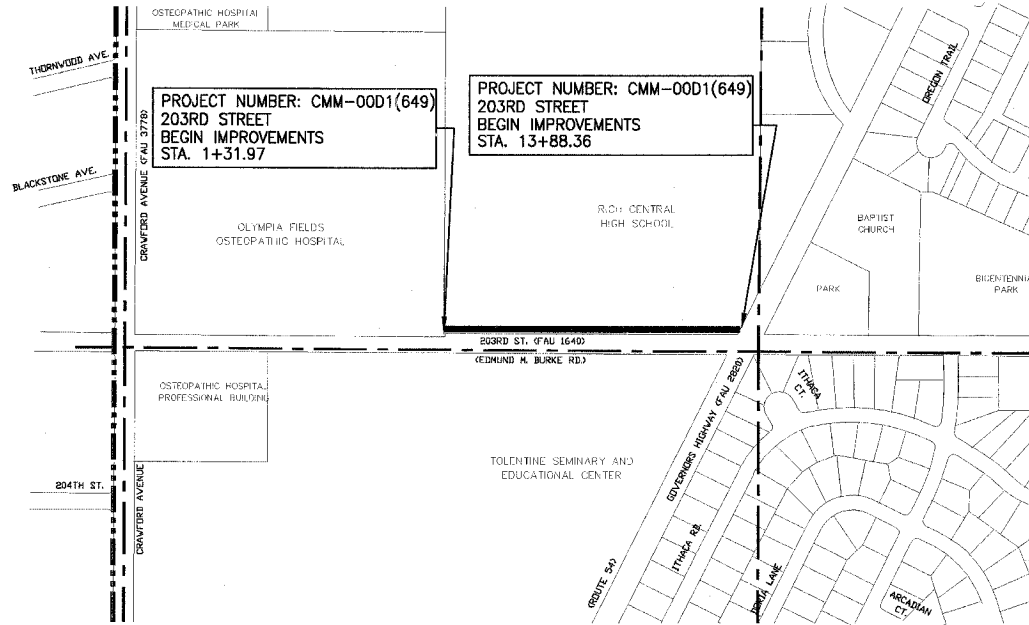
STATE OF ILLINOIS

DEPARTMENT OF TRANSPORTATION

DIVISION OF HIGHWAYS

PLANS FOR PROPOSED FEDERAL AID PROJECT

**203RD STREET (FAU 1640)
 FROM 1/4 MILE EAST OF CRAWFORD AVE (FAU 3778)
 TO GOVERNORS HIGHWAY (FAU 2820)
 SECTION NO: 04-00023-00-BT
 PROJECT NO.: CMM-00D1(650)
 JOB NO.: C-91-353-04
 COOK COUNTY, ILLINOIS**



RICH TOWNSHIP (AREA 31) T35, R13E

LOCATION MAP (N.T.S.)

GROSS LENGTH OF IMPROVEMENT = 1,256 LIN. FT. OR 0.24 MILES

NET LENGTH OF IMPROVEMENT = 1,256 LIN. FT. OR 0.24 MILES



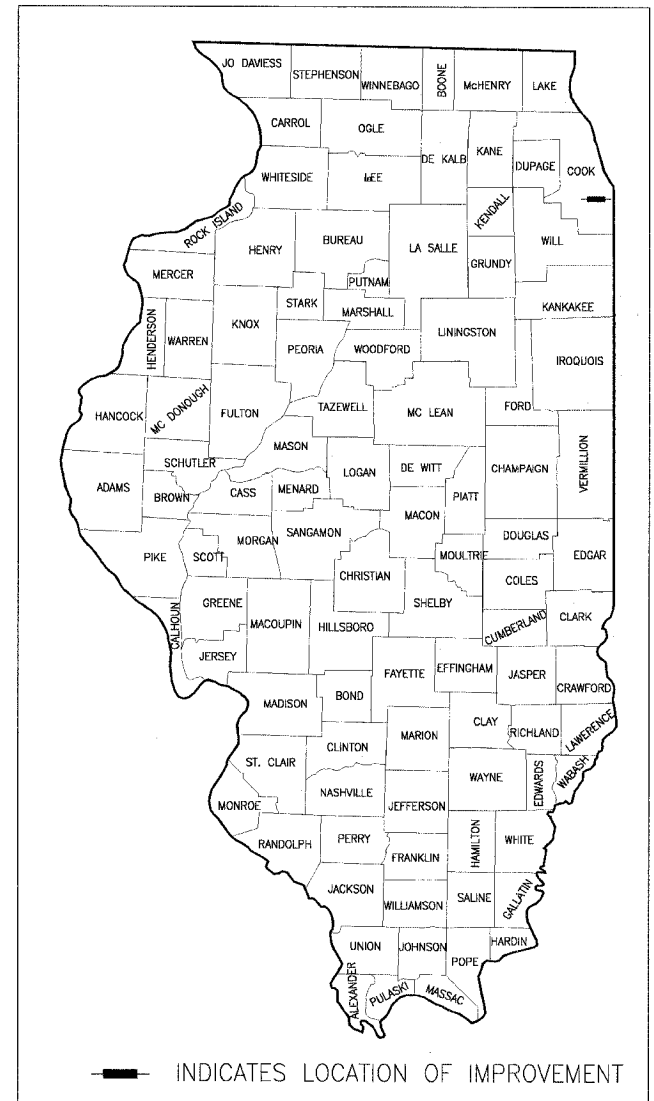
Baxter & Woodman

Burlington, Wisconsin 262.763.7834 Crystal Lake, Illinois 815.459.1260 DeKalb, Illinois 815.787.3111 Mokena, Illinois 708.478.2090 Craylake, Illinois 847.223.5088 Rockford, Illinois 815.489.1551 Plainfield, Illinois 815.609.7425

(OFFICE WHICH PREPARED PLANS)

F.A. ROUTE NO.	SECTION	COUNTY	TOTAL SHEETS	SHEET NO.
1640	04-00023-00-BT	COOK	12	1

ILLINOIS PROJECT C-91-353-04 CONTRACT NO. 83849



Nathan J. Paul
 LICENSE EXPIRES 11-30-07
 PROJECT MANAGER

Melissa C. Unruh
 PROJECT ENGINEER

ENGINEER'S PROJECT NUMBER: 050686 DATE: 02-27-06

STATE OF ILLINOIS
 DEPARTMENT OF TRANSPORTATION
 DIVISION OF HIGHWAYS

APPROVED FEBRUARY 27, 2006

PASSED APRIL 11, 2006

SIGNED April 11, 2006

LOCAL REPRESENTATIVE
 LOCAL REPRESENTATIVE
 LOCAL ROADS ENGINEER
 DEPUTY DIRECTOR OF HIGHWAYS, REGION ENGINEER

PRINTED BY THE AUTHORITY OF THE STATE OF ILLINOIS

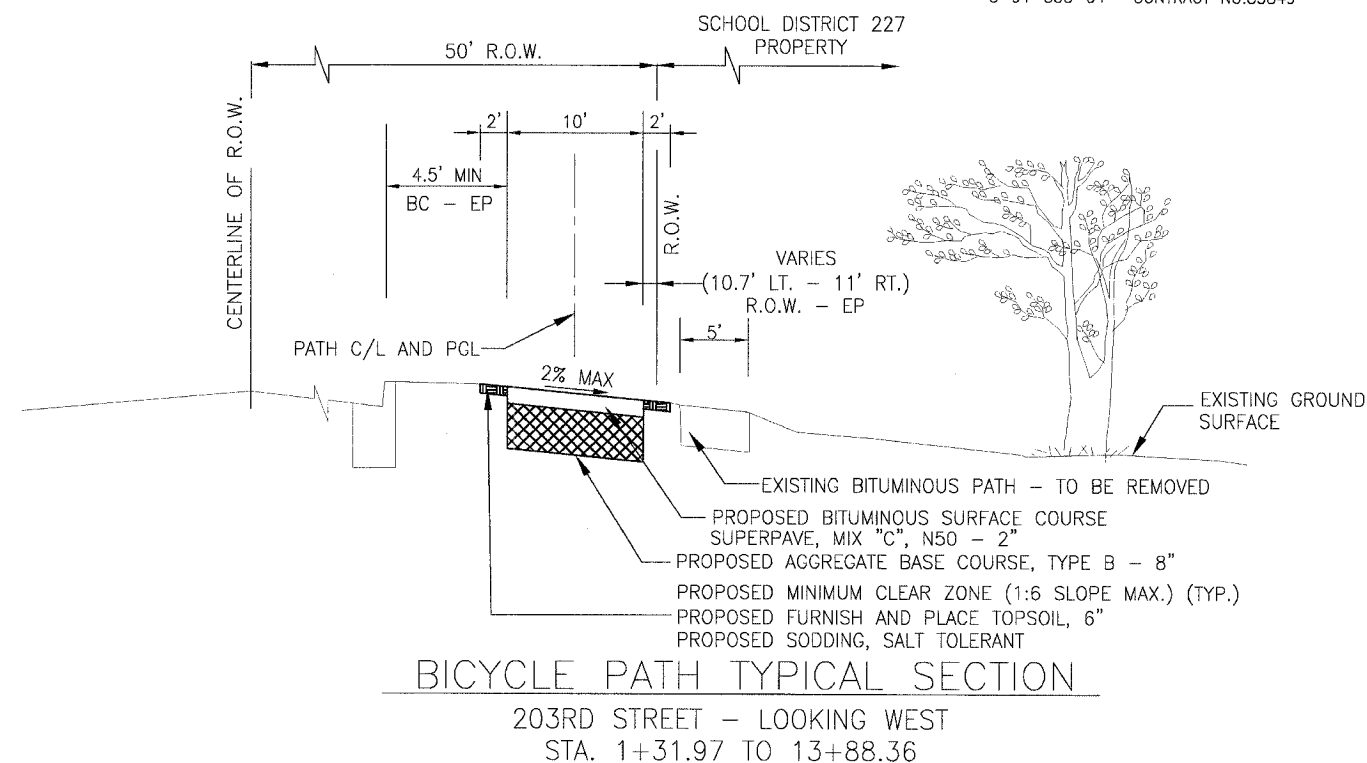
I.D.O.T. FEDERAL AID DESIGN ENGINEER: JESSICA MILLER, 847-7705-4487 SCHAUMBURG, IL.

PROJECT COMMITMENTS			
MADE TO:	MADE BY:	DATE:	COMMITMENT:
SCHOOL DISTRICT 227	VILLAGE OF OLYMPIA FIELDS	APRIL 26, 2005	A 4-INCH CONCRETE COLLAR WILL BE POURED AROUND THE SANITARY STRUCTURE LOCATED PARTIALLY IN THE PATH AT APPROXIMATELY STATION 4+54
SCHOOL DISTRICT 227	VILLAGE OF OLYMPIA FIELDS	APRIL 26, 2005	THE CONTRACTOR SHALL INSTALL YIELD SIGNS PER THE MUTCD AT EACH DRIVEWAY TO WARN BIKEWAY USERS OF POTENTIAL VEHICLES.

BENCHMARKS

- BM #1 NORTHEAST FLANGE BOLT ON FIRE HYDRANT AT NORTHEAST CORNER OF 203RD STREET AND CRAWFORD AVENUE ELEVATION = 707.12
- BM #2 ARROW ON FIRE HYDRANT ON SOUTHWEST CORNER OF 203RD STREET AND KEDZIE AVENUE ELEVATION = 696.76

PAVEMENT SCHEDULE OF MATERIALS							
		AGGREGATE BASE COURSE, 8"			BITUMINOUS CONCRETE SURFACE COURSE, SUPERPAVE		
STATION BEGIN	STATION END	LENGTH (FT)	WIDTH (FT)	AREA (SQ YD)	WIDTH (FT)	AREA (SQ YD)	SURFACE (TON)
1+32	1+42	10	10	12	10	11	2
1+69	5+21	352	10	391	10	391	45
5+43	6+41	98	10	109	10	109	13
6+61	13+70	709	10	788	10	788	91
6+61	6+71	10	VARIES	5	VARIES	5	1
TOTAL:				1305		152	



EARTH EXCAVATION SCHEDULE OF MATERIALS									
STATION	EARTH EXCAVATION (SF)	EMBANK. (SF)	TOPSOIL EX. (SF)	EARTH EXCAVATION (CY)	EMBANK. (CY)	TOPSOIL EXCAVATION (CY)	REM. & DISP. OF UNSUIT. MATERIAL (CY)	EARTH EXC. TO BE USED IN EMB (15% SHRINK) (CY)	BALANCE WASTE (+) SHORTAGE (-) (CY)
203RD STREET BIKEWAY									
1+32	0.0	0.0	0.0						
1+42	12.0	0.5	15.0	2.2	0.1	2.8	2.8	1.9	1.8
1+69	0.0	0.0	0.0						
2+00	12.4	0.7	15.1	7.1	0.4	8.7	8.7	6.0	5.6
3+00	18.7	9.6	2.9	57.6	19.2	33.2	33.2	49.0	29.8
4+00	5.6	0.1	11.9	45.1	18.1	27.3	27.3	38.3	20.2
5+00	6.0	0.1	22.3	21.5	0.5	63.4	63.4	18.3	17.8
5+21	0.0	0.0	0.0	2.3	0.1	8.7	8.7	2.0	1.9
5+43	0.0	0.0	0.0						
6+00	4.2	1.9	20.9	4.4	2.0	22.0	22.0	3.7	1.7
6+41	0.0	0.0	0.0	3.2	1.4	15.9	15.9	2.7	1.3
6+61	0.0	0.0	0.0						
7+00	5.0	3.2	11.7	3.6	2.3	8.4	8.4	3.1	0.8
8+00	30.7	0.1	20.3	66.0	6.2	59.2	59.2	56.1	49.9
9+00	31.3	0.1	24.4	114.8	0.4	82.8	82.8	97.6	97.2
10+00	4.9	0.1	10.1	67.0	0.4	63.9	63.9	57.0	56.6
10+53	2.2	27.9	21.3	6.9	27.5	30.8	30.8	5.9	-21.6
11+00	2.2	22.2	16.8	3.8	43.6	33.2	33.2	3.2	-40.4
12+00	2.5	2.6	14.3	8.5	45.9	57.6	57.6	7.2	-38.7
13+00	3.6	0.5	9.9	11.3	5.6	44.9	44.9	9.6	4.0
13+88	0.0	0.0	0.0	5.9	0.8	16.2	16.2	5.0	4.2
TOTALS				431.2	174.5	579.0	579.0	366.5	192.1

EARTHWORK NOTES:
PROPOSED 6 INCH DEPTH OF TOPSOIL PLACEMENT.
ASSUMED 6 INCH DEPTH OF EXISTING TOPSOIL EXCAVATION
ASSUMED 15% SHRINKAGE OF EARTH EXCAVATION TO BE REUSED IN EMBANKMENT.

BITUMINOUS MIXTURE REQUIREMENTS			
ITEM	AC TYPE	VOIDS	RAP %
BITUMINOUS CONCRETE SURFACE COURSE, SUPERPAVE, MIX "C", N50	PG 64-22	4% @ 50 Gyr	15%

** UNIT WEIGHT USED TO CALCULATE BITUMINOUS MIXTURES IS 112 LB/SY/IN THICKNESS

SUMMARY OF QUANTITIES			
CODE NUMBER	PAY ITEM DESCRIPTION	UNIT	QTY
**20101100	TREE TRUNK PROTECTION	EACH	4
**20101200	TREE ROOT PRUNING	EACH	5
20200100	EARTH EXCAVATION	CU YD	433
20201200	REMOVAL AND DISPOSAL OF UNSUITABLE MATERIAL	CU YD	579
**21101625	TOPSOIL FURNISH AND PLACE, 6"	SQ YD	2468
**25000400	NITROGEN FERTILIZER NUTRIENT	POUND	46
**25000500	PHOSPHORUS FERTILIZER NUTRIENT	POUND	46
**25000600	POTASSIUM FERTILIZER NUTRIENT	POUND	46
**25200110	SODDING, SALT TOLERANT	SQ YD	2468
25200200	SUPPLEMENTAL WATERING	UNIT	3
28000400	PERIMETER EROSION BARRIER	FOOT	876
28000510	INLET FILTERS	EACH	4
35102000	AGGREGATE BASE COURSE, TYPE B 8"	SQ YD	1305
42400430	PORTLAND CEMENT CONCRETE SIDEWALK 5 INCH, SPECIAL	SQ FT	150
42400800	DETECTABLE WARNINGS	SQ FT	16
44001700	COMBINATION CONCRETE CURB AND GUTTER REMOVAL AND REPLACEMENT	FOOT	40
66503400	BARBED WIRE FENCE REMOVAL	FOOT	10
67100100	MOBILIZATION	L SUM	1
70102625	TRAFFIC CONTROL AND PROTECTION, STANDARD 701606	L SUM	1
70102635	TRAFFIC CONTROL AND PROTECTION, STANDARD 701701	L SUM	1
70102640	TRAFFIC CONTROL AND PROTECTION, STANDARD 701801	L SUM	1
**72000100	SIGN PANEL - TYPE 1	SQ FT	13
**72900100	METAL POST - TYPE A	FOOT	90
**78000400	THERMOPLASTIC PAVEMENT MARKING - LINE 6"	FOOT	128
**78000600	THERMOPLASTIC PAVEMENT MARKING - LINE 12"	FOOT	206
**78000650	THERMOPLASTIC PAVEMENT MARKING - LINE 24"	FOOT	18
X0321556	SANITARY MANHOLES TO BE ADJUSTED	EACH	2
X4066414	BITUMINOUS CONCRETE SURFACE COURSE, SUPERPAVE, MIX "C", N50	TON	151
Z0017400	DRAINAGE & UTILITY STRUCTURES TO BE ADJUSTED	EACH	3
**Z0019600	DUST CONTROL WATERING	UNIT	4

** DENOTES SPECIALTY ITEM THESE ITEMS ARE CONSTRUCTION TYPE CODE SFTY-1B

CONSULTANT: BAXTER & WOODMAN, INC.
 1000 WEST WASHINGTON STREET, SUITE 1000, ROCKFORD, ILLINOIS 61103
 PHONE: 815.488.1551 FAX: 815.488.1552

CONSULTANTS	REV. NO.	DATE	DESCRIPTION
	1	02-27-06	PER IDOT REVIEW

* - REFER TO EQUIPMENT MANUFACTURER'S SHOP DRAWINGS

1" = 5' 0" 1" = 2' 3"

50686-SH2 NJP 02-27-06 12:00

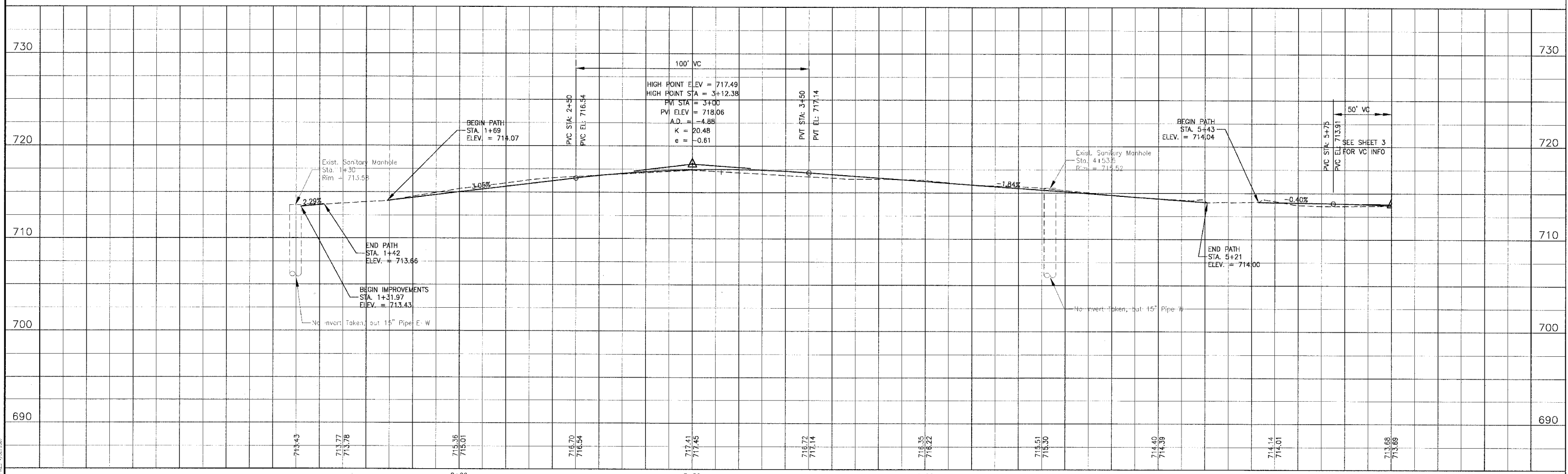
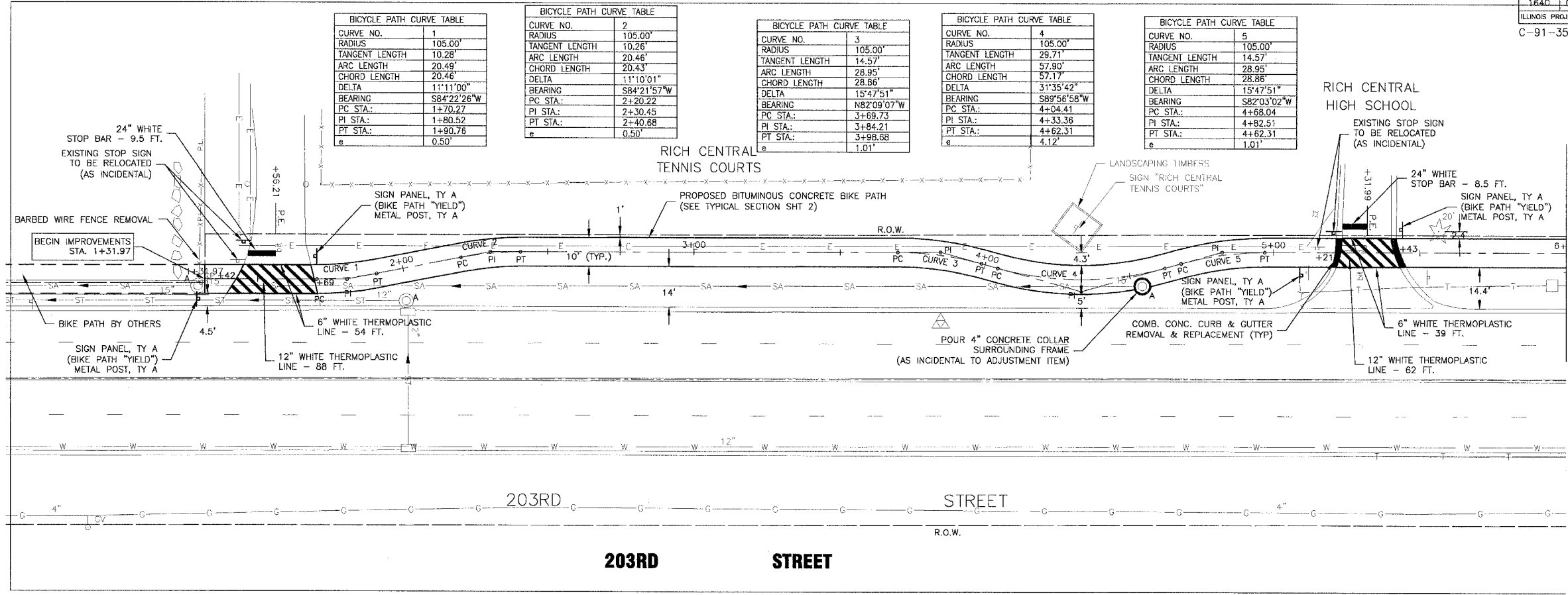
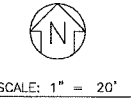


Baxter & Woodman
 Crystal Lake, Illinois 815.488.1260
 Burlington, Wisconsin 262.783.7834
 Mokena, Illinois 708.478.2090
 DeKalb, Illinois 815.787.3111
 Craylake, Illinois 847.223.6088
 Rockford, Illinois 815.488.1551

VILLAGE OF OLYMPIA FIELDS, ILLINOIS 203RD STREET BIKEWAY

LEGEND, ABBREVIATIONS, SUMMARY OF QUANTITIES, SCHEDULES, GENERAL NOTES, TYPICAL SECTIONS, AND BENCHMARKS

DESIGNED BY MCU	SCALE AS NOTED
DRAWN BY NJP	PROJECT NO. 050686
CHECKED BY NJP	SHEET NO. 3 OF 12
DATE 12-12-05	



CONSULTANTS	REV. NO.	DATE	DESCRIPTION
	1	02-27-06	PER IDOT REVIEW

* - REFER TO EQUIPMENT MANUFACTURER'S SHOP DRAWINGS

50856BIKPRF 4/4 02-27-06 13:25

BAXTER & WOODMAN
Consulting Engineers

Crystal Lake, Illinois 815.459.1280
Burlington, Wisconsin 262.763.7834
Mokena, Illinois 708.478.2090
DeKalb, Illinois 815.787.3111
Oraylake, Illinois 847.223.5088
Rockford, Illinois 815.489.1551

VILLAGE OF OLYMPIA FIELDS, ILLINOIS
203RD STREET BIKEWAY

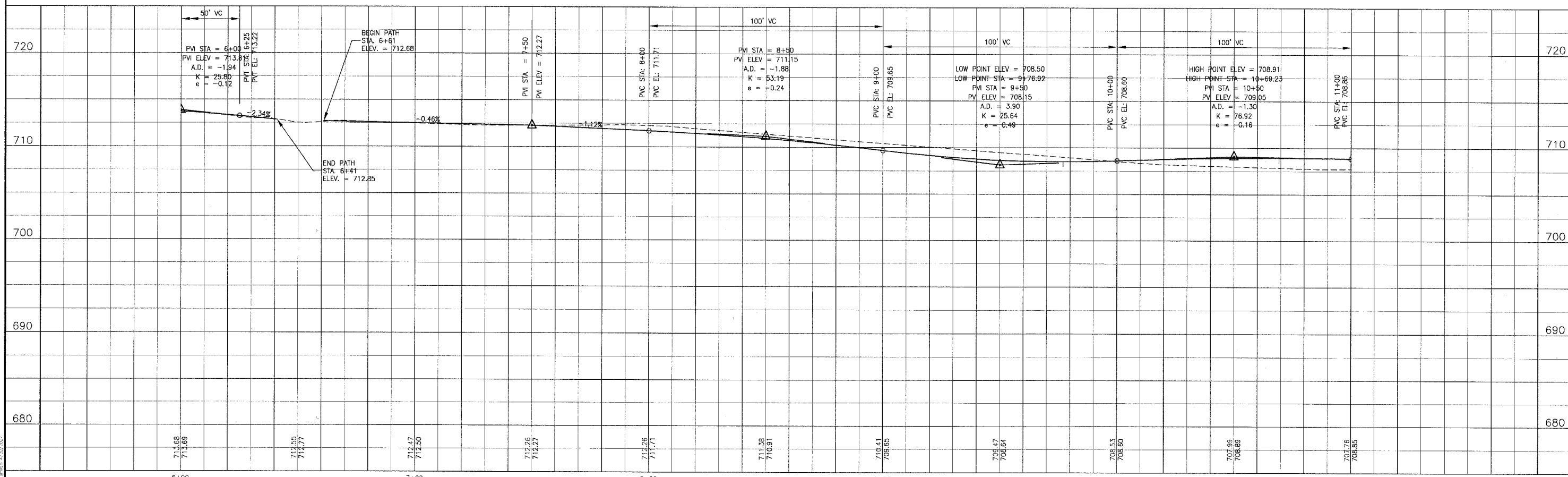
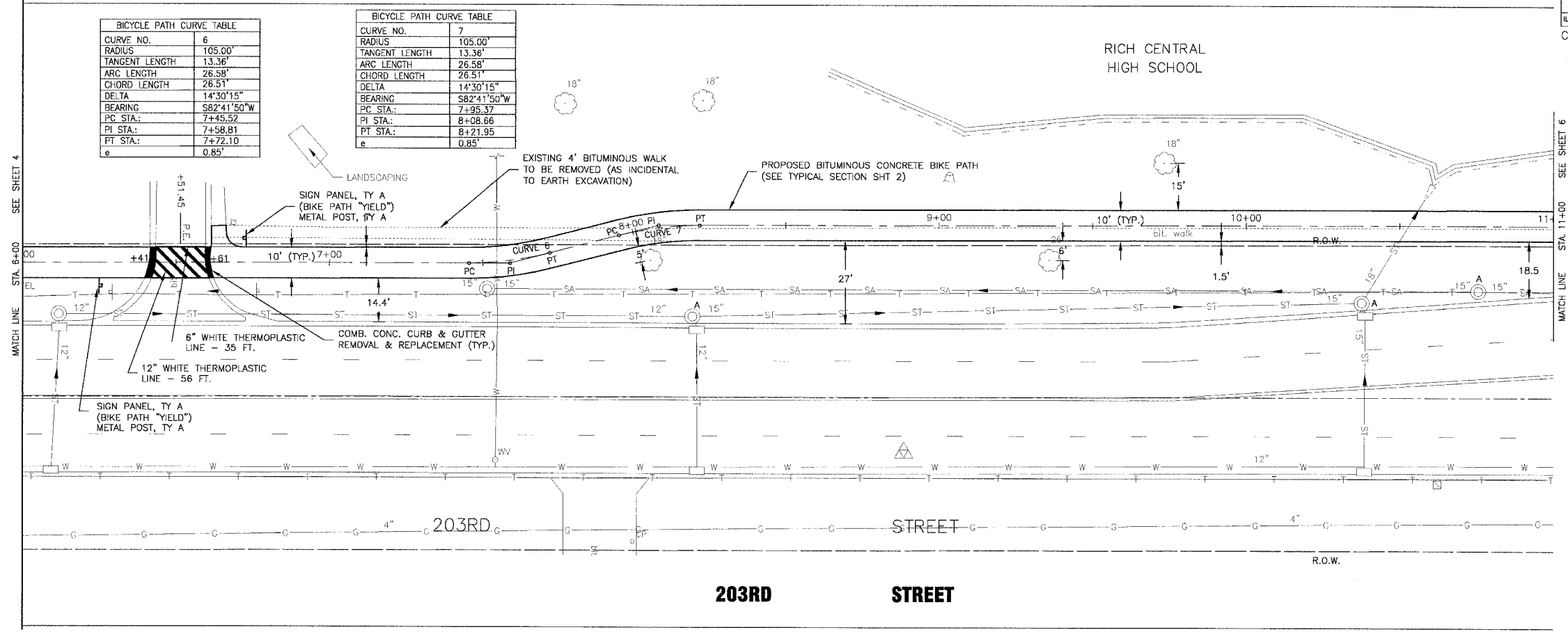
203rd STREET
STA. 1+31.97 TO STA. 6+00
PLAN AND PROFILE

DESIGNED BY MCU	SCALE AS NOTED
DRAWN BY NJP	PROJECT NO. 050686
CHECKED BY NJP	SHEET NO. 4 OF 12
DATE 12-12-05	

COPYRIGHT © 2005 BY BAXTER & WOODMAN, INC. LICENSE NO. 04-00023-00-BT ENGINEER CAV/2007



SCALE: 1" = 20'



COPYRIGHT © 2006 BY BAXTER & WOODMAN, INC. LICENSE NO. 158-00131 - EXPRESS 1/22/07/07

CONSULTANTS	REV. NO.	DATE	DESCRIPTION
	1	02-27-06	PER IDOT REVIEW

* - REFER TO EQUIPMENT MANUFACTURER'S SHOP DRAWINGS

50686BIKPRF NJP 02-27-06 13:30

BAXTER & WOODMAN
Consulting Engineers

Crystal Lake, Illinois 815.459.1260
Burlington, Wisconsin 262.763.7834
Mukwonago, Illinois 708.478.2090
DeKalb, Illinois 815.787.3111
Craigslist, Illinois 847.223.6088
Rockford, Illinois 815.489.1551

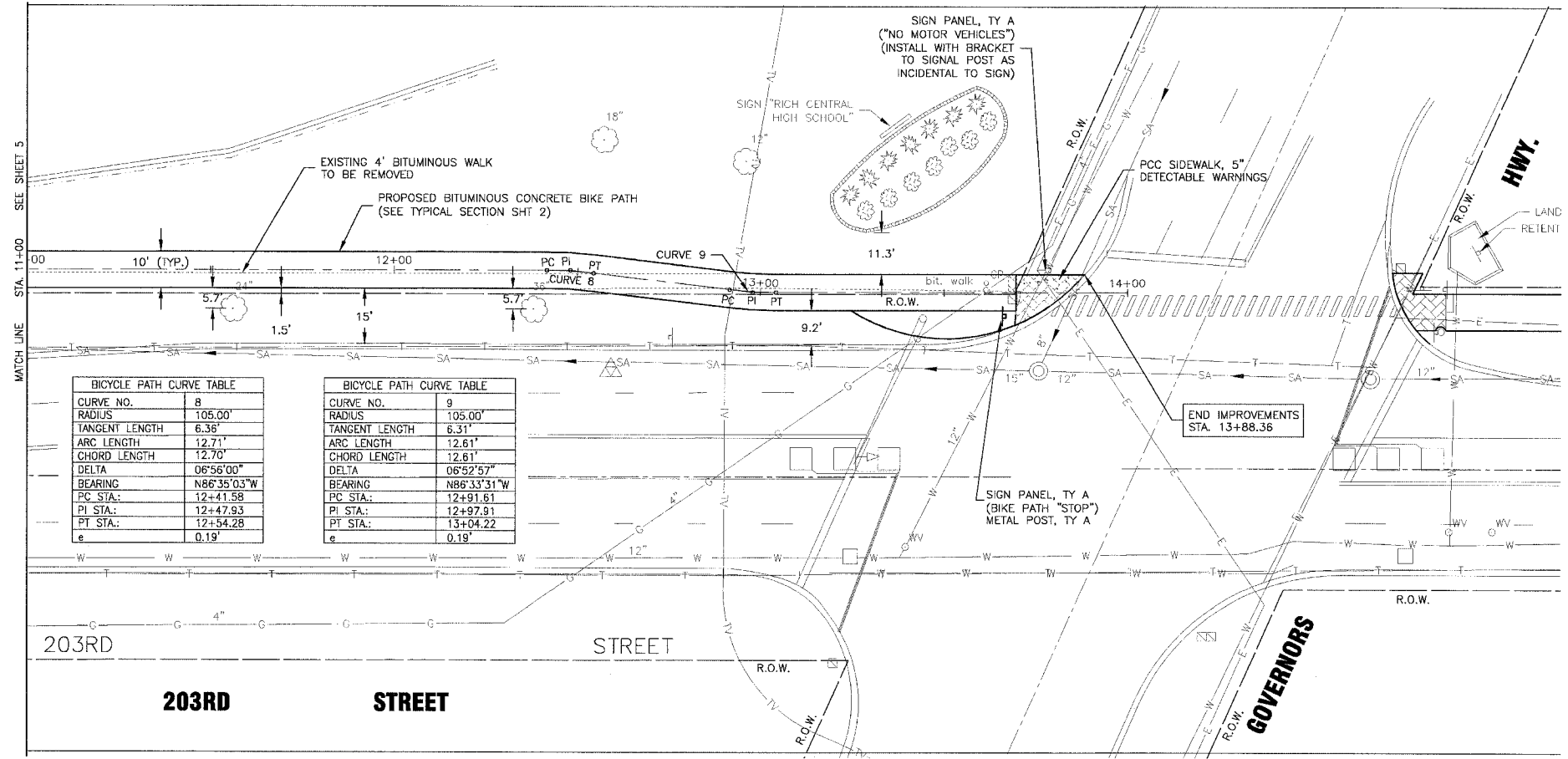
VILLAGE OF OLYMPIA FIELDS, ILLINOIS
203RD STREET BIKEWAY

203rd STREET
STA. 6+00 TO STA. 11+00
PLAN AND PROFILE

DESIGNED BY MCU	SCALE AS NOTED
DRAWN BY NJP	PROJECT NO. 050686
CHECKED BY NJP	SHEET NO. 5 OF 12
DATE 12-12-05	

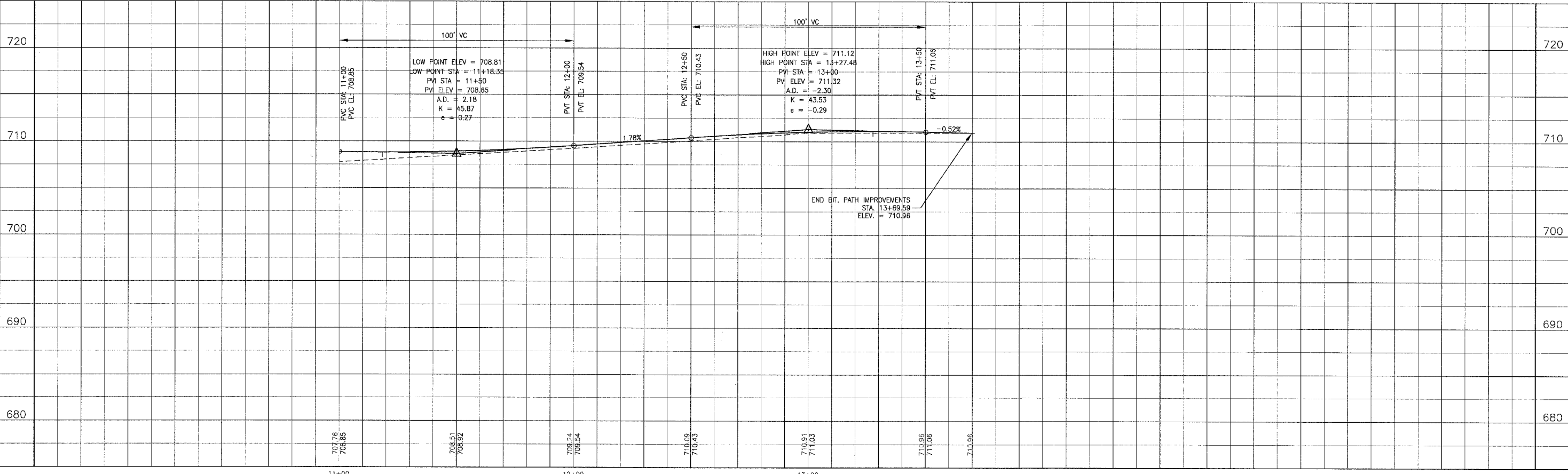


SCALE: 1" = 20'



CURVE NO.	8
RADIUS	105.00'
TANGENT LENGTH	6.36'
ARC LENGTH	12.71'
CHORD LENGTH	12.70'
DELTA	06°56'00"
BEARING	N86°35'03"W
PC STA.	12+41.58
PI STA.	12+47.93
PT STA.	12+54.28
e	0.19'

CURVE NO.	9
RADIUS	105.00'
TANGENT LENGTH	6.31'
ARC LENGTH	12.61'
CHORD LENGTH	12.61'
DELTA	06°52'57"
BEARING	N86°33'31"W
PC STA.	12+91.61
PI STA.	12+97.91
PT STA.	13+04.22
e	0.19'



CONSULTANTS

REV. NO. 1 DATE 02-27-06 DESCRIPTION PER IDOT REVIEW

* - REFER TO EQUIPMENT MANUFACTURER'S SHOP DRAWINGS

1" = 5' 0" 1" = 2' 3"

REV. NO.	DATE	DESCRIPTION
1	02-27-06	PER IDOT REVIEW

508823KLEPRF NJP 02-27-06 13:30

BAXTER & WOODMAN

Crystal Lake, Illinois 815.489.1200
 Burlington, Wisconsin 262.783.7834
 Mokena, Illinois 708.478.2090
 DeKalb, Illinois 815.707.3111
 Crayslake, Illinois 847.223.5088
 Rockford, Illinois 815.489.1651

VILLAGE OF OLYMPIA FIELDS, ILLINOIS

203RD STREET BIKEWAY

203rd STREET

STA. 11+00 TO STA. 14+00

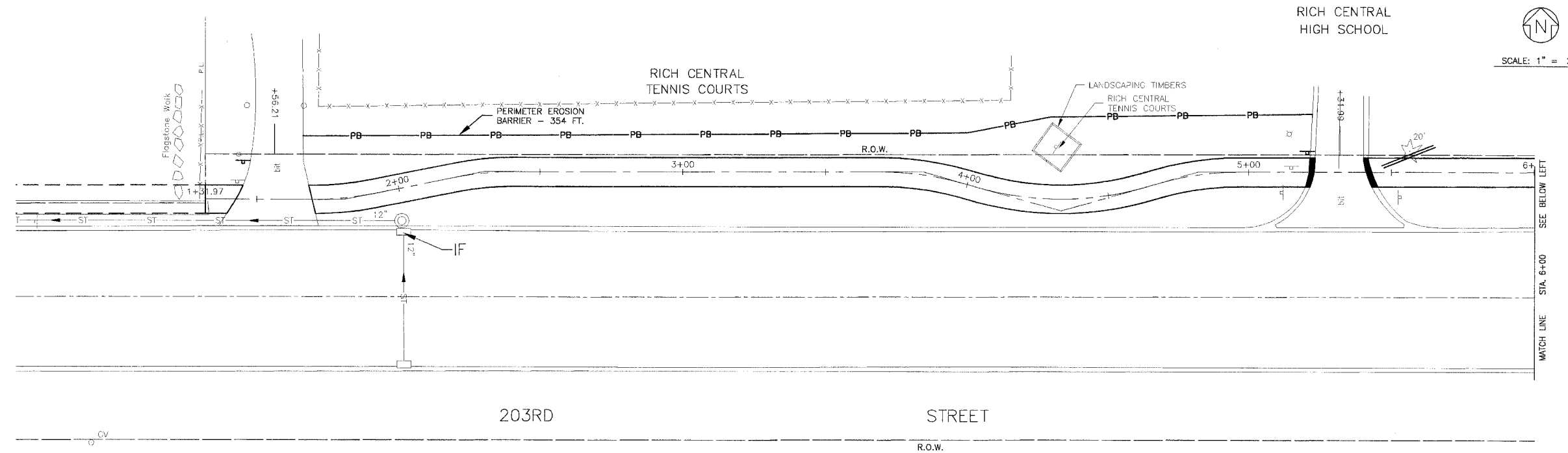
PLAN AND PROFILE

DESIGNED BY	SCALE
MCU	AS NOTED
DRAWN BY	PROJECT NO.
NJP	050686
CHECKED BY	SHEET NO.
NJP	6 OF 12
DATE	
12-12-05	

COPYRIGHT © 2006 BY BAXTER & WOODMAN, INC.
 LICENSE NO. 14-00171 - PARISE 4/20/2007

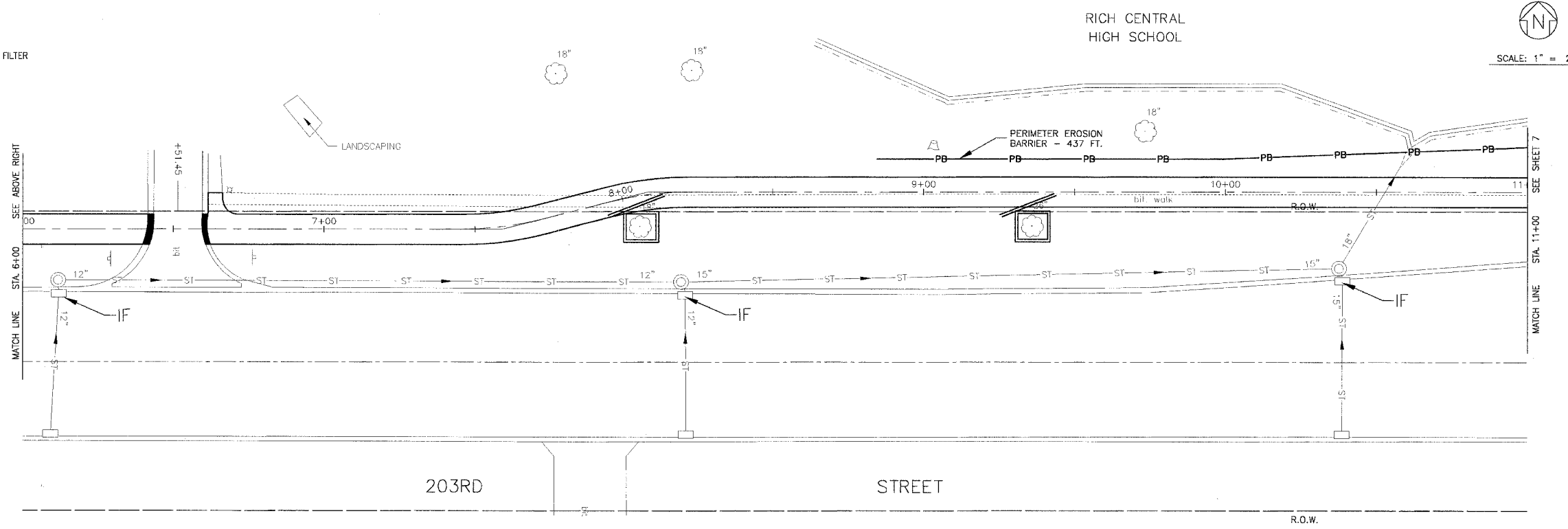
FA ROUTE NO.	SECTION	COUNTY	TOTAL SHEETS	SHEET NO.
1640	04-00023-00-BT	COOK	12	7

ILLINOIS PROJECT
C-91-353-04 CONTRACT NO.83849



LEGEND

- PERIMETER EROSION BARRIER
- INLET AND PIPE PROTECTION
- SEDIMENT CONTROL DRAINAGE STRUCTURE - INLET FILTER
- TREE TRUNK PROTECTION
- TREE ROOT PRUNING



COPYRIGHT © 2006 BY BAXTER & WOODMAN, INC.
 ALL RIGHTS RESERVED. ILLINOIS PROFESSIONAL ENGINEERING LICENSE NO. 021-077-007

CONSULTANTS	REV. NO.	DATE	DESCRIPTION
	1	02-27-06	PER IDOT REVIEW

* - REFER TO EQUIPMENT MANUFACTURER'S SHOP DRAWINGS

DWGNO	INI	CHGDATE	TIME
-------	-----	---------	------

BAXTER & WOODMAN
 Consulting Engineers

Baxter & Woodman
 Crystal Lake, Illinois 815.459.1280
 Burlington, Wisconsin 262.763.7834
 Mokena, Illinois 708.478.2090
 DeKalb, Illinois 815.787.3111
 Craylake, Illinois 847.223.5088
 Rockford, Illinois 815.489.1551

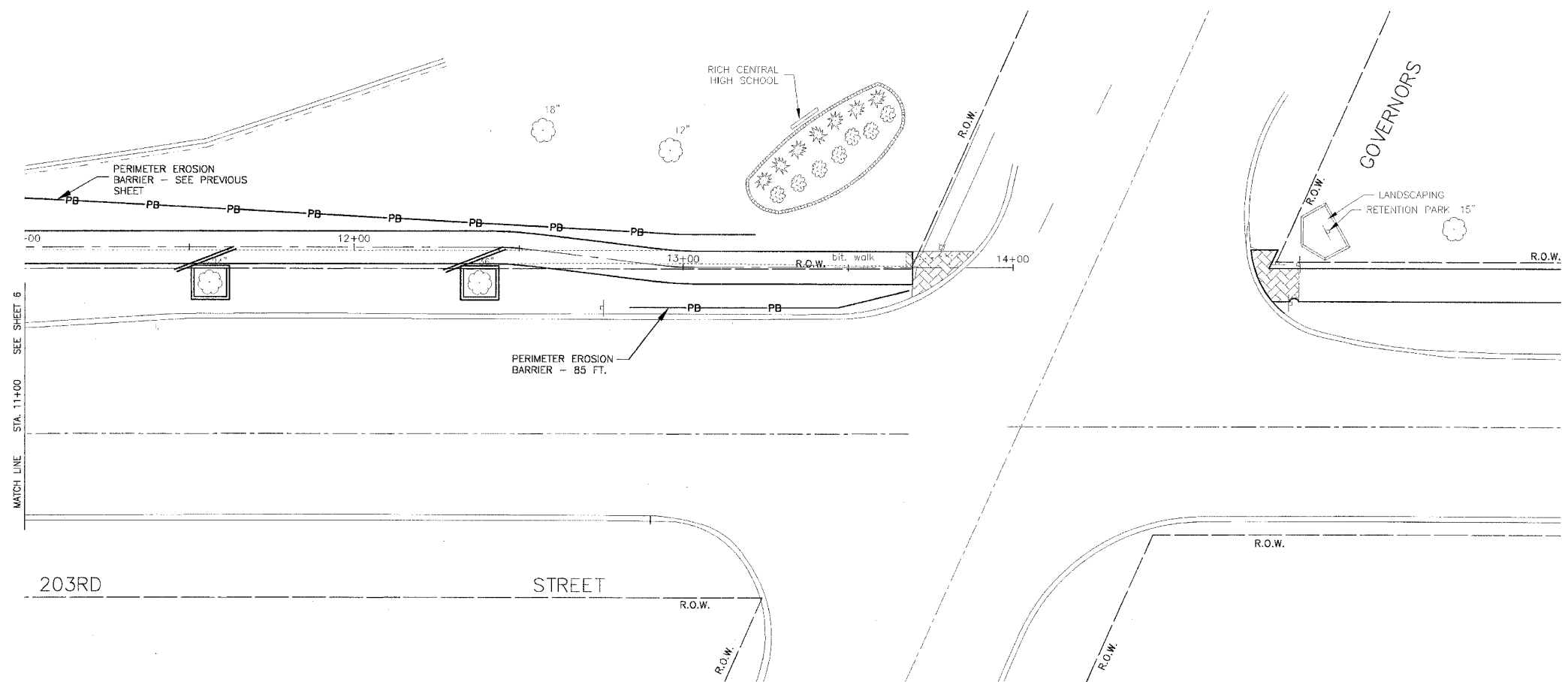
VILLAGE OF OLYMPIA FIELDS, ILLINOIS
203RD STREET BIKEWAY

DESIGNED BY MCU	SCALE AS NOTED
DRAWN BY NJP	PROJECT NO. 050686
CHECKED BY NJP	SHEET NO.
DATE 12-12-05	7 OF 12

EROSION CONTROL PLAN
STA 1+31.97 TO STA. 11+00

F.A. ROUTE NO.	SECTION	COUNTY	TOTAL SHEETS	SHEET NO.
1640	04-00023-00-BT	COOK	12	8

ILLINOIS PROJECT
C-91-353-04 CONTRACT NO.83849



LEGEND

- PERIMETER EROSION BARRIER
- INLET AND PIPE PROTECTION
- SEDIMENT CONTROL DRAINAGE STRUCTURE -- INLET FILTER
- TREE TRUNK PROTECTION
- TREE ROOT PRUNING

COPYRIGHT 2006 BY BAXTER & WOODMAN, INC.
 STATE OF ILLINOIS - PROFESSIONAL ENGINEER
 LICENSE NO. 021-000000000000000000

CONSULTANTS	REV. NO.	DATE	DESCRIPTION
	1	02-27-06	PER IDOT REVIEW
* - REFER TO EQUIPMENT MANUFACTURER'S SHOP DRAWINGS			
50686EROS		NJP 02-27-06 13:20	



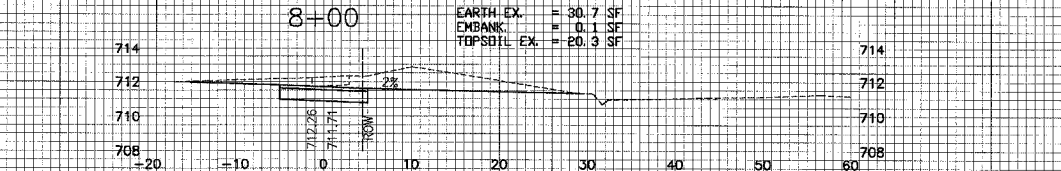
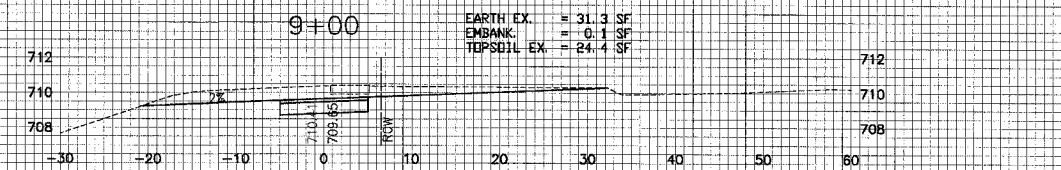
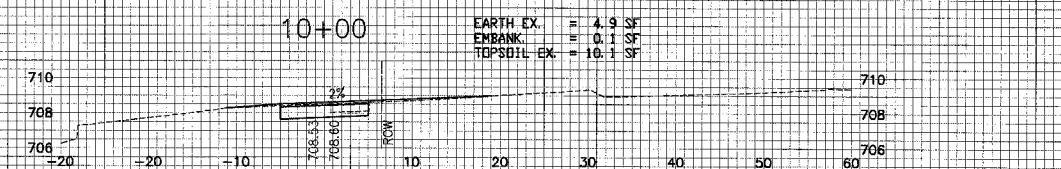
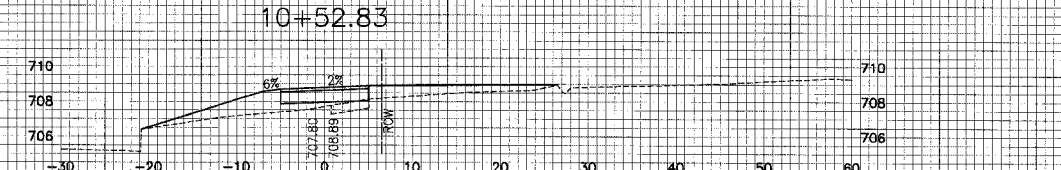
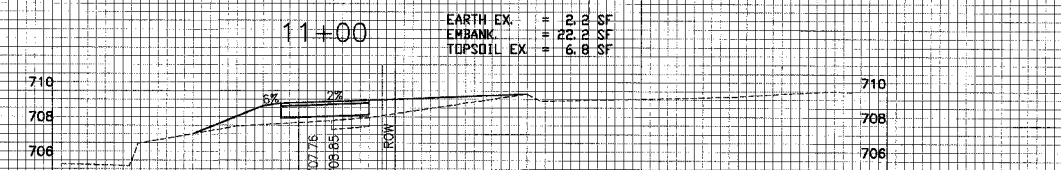
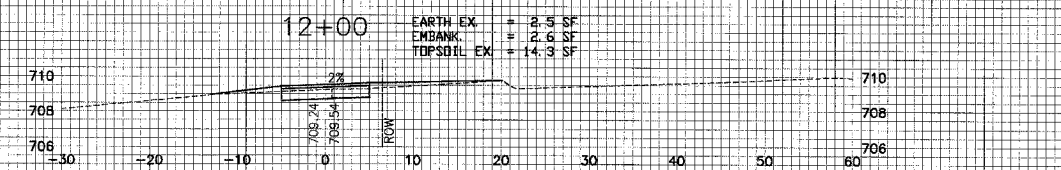
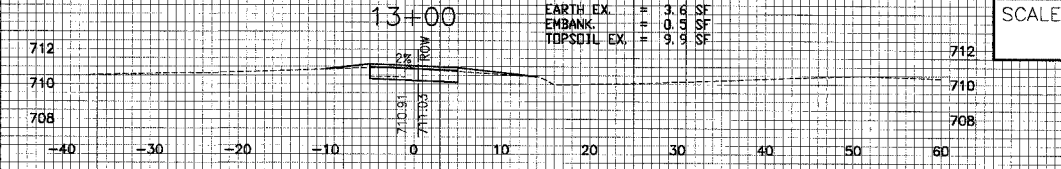
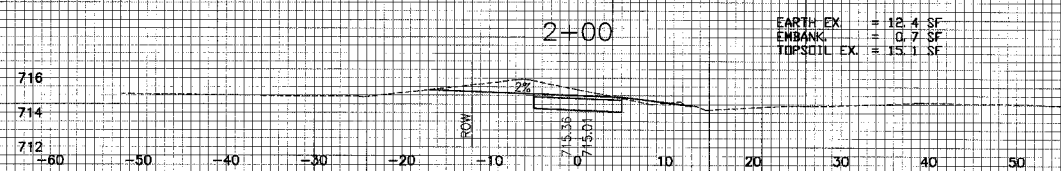
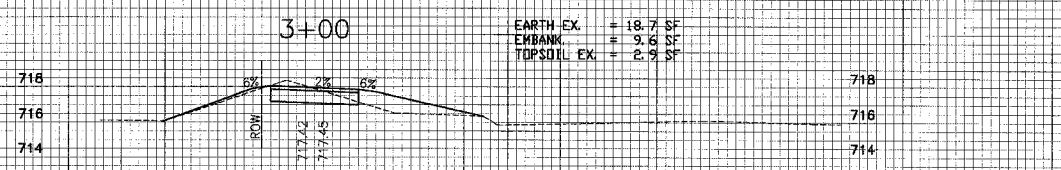
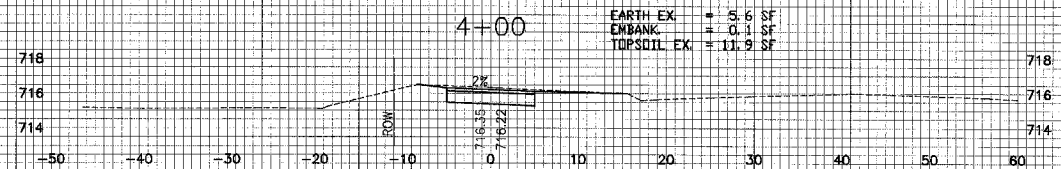
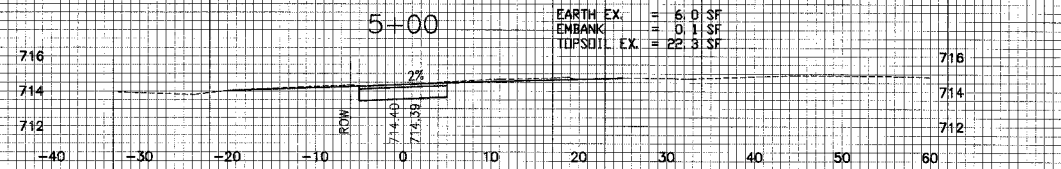
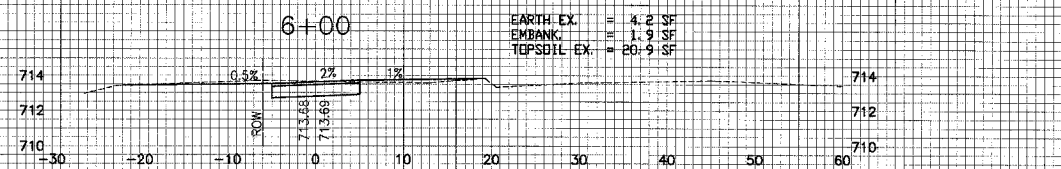
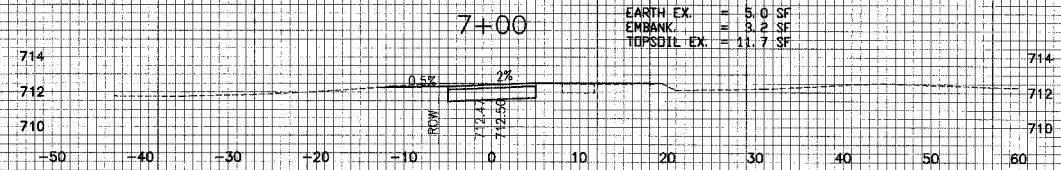
Baxter & Woodman
 Crystal Lake, Illinois 815.489.1200
 Burlington, Wisconsin 262.783.7834
 Mokena, Illinois 708.478.2090
 DeKalb, Illinois 815.787.3111
 Crayslake, Illinois 847.223.5088
 Rockford, Illinois 815.489.1661

VILLAGE OF OLYMPIA FIELDS, ILLINOIS
203RD STREET BIKEWAY

EROSION CONTROL PLAN
STA. 11+00 TO STA. 14+00

DESIGNED BY MCU	SCALE AS NOTED
DRAWN BY NJP	PROJECT NO. 050686
CHECKED BY NJP	SHEET NO.
DATE 12-12-05	8 OF 12

SCALE: VERT. = 1"=5'
HORIZ. = 1"=10'



COPYRIGHT © 2005, BY BAXTER & WOODMAN, INC.
 STATE OF ILLINOIS - PROJECT NO. 050686
 DRAWN BY: N.J.P. DATE: 02-27-06

CONSULTANTS	REV. NO.	DATE	DESCRIPTION
Baxter & Woodman	1	02-27-06	PER IDOT REVIEW

* - REFER TO EQUIPMENT MANUFACTURER'S SHOP DRAWINGS

50686XSEC.DWG AJP 02-27-06 15:00

BAXTER & WOODMAN
 Consulting Engineers

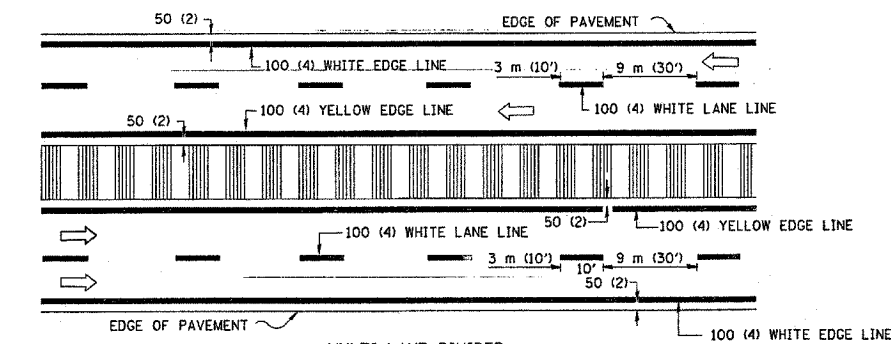
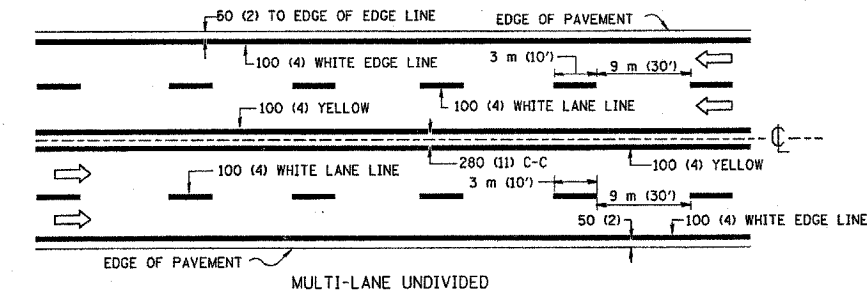
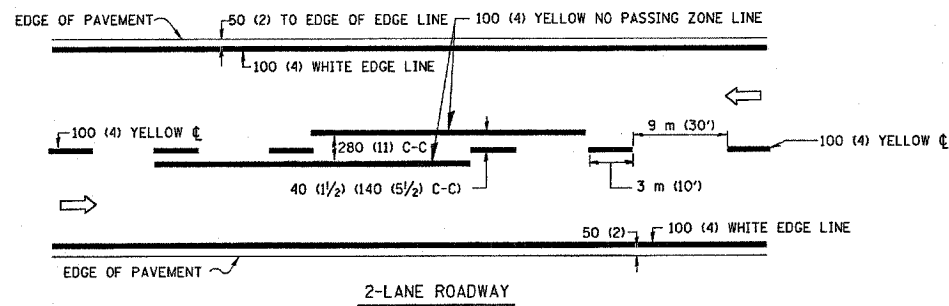
Baxter & Woodman
 Crystal Lake, Illinois 815.459.1260
 Burlington, Wisconsin 262.763.7834
 Mokena, Illinois 708.478.2090
 DeKalb, Illinois 815.787.3111
 Crayslake, Illinois 847.223.5088
 Rockford, Illinois 815.489.1551

VILLAGE OF OLYMPIA FIELDS, ILLINOIS
203RD STREET BIKEWAY

CROSS SECTIONS
STA. 1+30.97 TO STA. 13+00

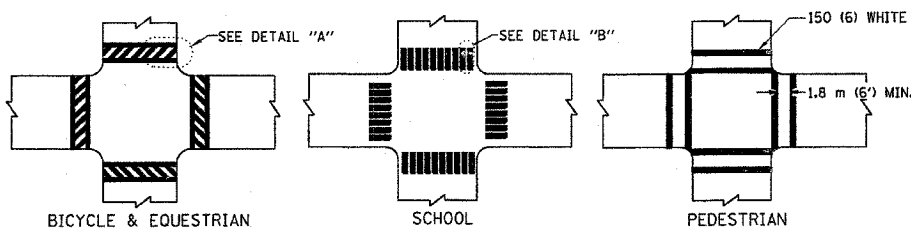
DESIGNED BY MCU	SCALE AS NOTED
DRAWN BY N.J.P.	PROJECT NO. 050686
CHECKED BY N.J.P.	SHEET NO. 9 OF 12
DATE 12-12-05	

F. A. REC.	SECTION	COUNTY	TOTAL SHEETS	SHEET NO.
	04-00023-00-BT	COOK	12	10
STA.	TO STA.			
FED. ROAD DIST. NO.	ILLINOIS	FED. AID PROJECT		
CONTRACT NO. 63849		CMM-001(649)		

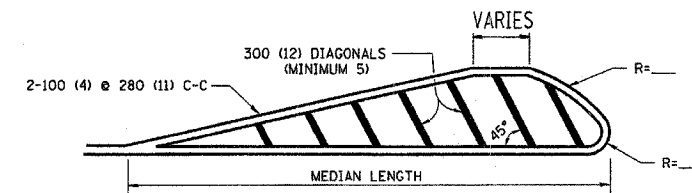
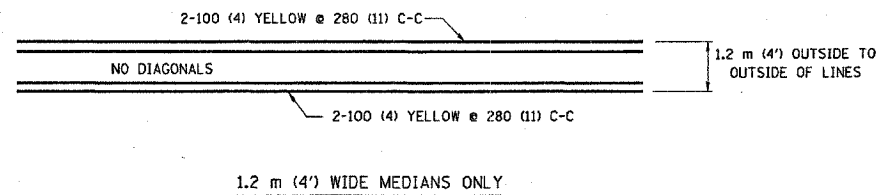


TYPICAL LANE AND EDGE LINE MARKING

NOTE: MEDIANS WITH BARRIER CURB DO NOT REQUIRE AN EDGE LINE



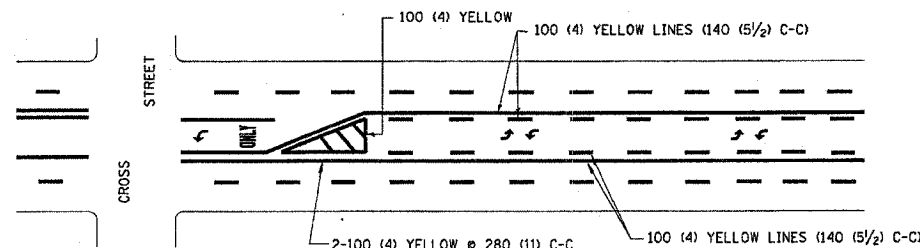
TYPICAL CROSSWALK MARKING



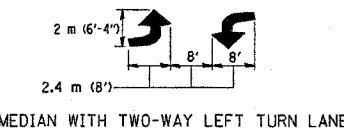
FOR MEDIAN LENGTHS WHERE DIAGONAL SPACING CANNOT BE ATTAINED, USE 5 (FIVE) EQUALLY SPACED DIAGONAL LINES.

DIAGONAL LINE SPACING: 15 m (50') C-C (LESS THAN 50 km/h (30 MPH))
25 m (75') C-C (50 km/h (30 MPH) TO 70 km/h (45 MPH))
45 m (150') C-C (MORE THAN 70 km/h (45 MPH))

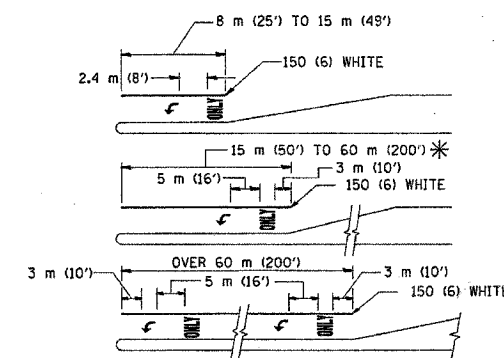
MEDIANS OVER 1.2 m (4') WIDE



A MINIMUM OF TWO PAIRS OF TURN ARROWS SHALL BE USED, WHITE IN COLOR. ADDITIONAL PAIRS SHALL BE PLACED AT 60 m (200') TO 90 m (300') INTERVALS.



TYPICAL PAINTED MEDIAN MARKING

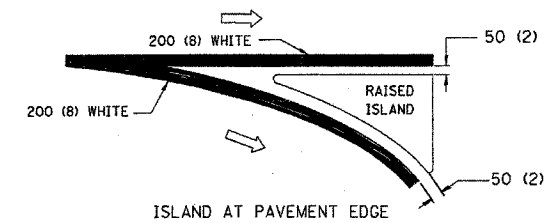
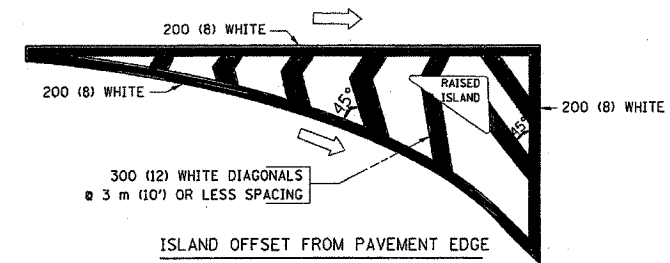


FULL SIZE LETTERS 2.4 m (8') AND ARROWS SHALL BE USED.
AREA = 1.5 m² (15.6 SQ. FT.) ONLY AREA = 1.9 m² (20.8 SQ. FT.)

* TURN LANES IN EXCESS OF 120 m (400') IN LENGTH MAY HAVE AN ADDITIONAL SET OF ARROW - "ONLY" INSTALLED MIDWAY BETWEEN THE OTHER TWO SETS OF ARROW - "ONLY".

TYPICAL LEFT (OR RIGHT) TURN LANE

TYPICAL TURN LANE MARKING



TYPICAL ISLAND MARKING

TYPE OF MARKING	WIDTH OF LINE	PATTERN	COLOR	SPACING / REMARKS
CENTERLINE ON 2 LANE PAVEMENT	100 (4)	SKIP-DASH	YELLOW	3 m (10') LINE WITH 9 m (30') SPACE
CENTERLINE ON MULTI-LANE UNDIVIDED PAVEMENT	2 @ 100 (4)	SOLID	YELLOW	280 (11) C-C
NO PASSING ZONE LINES FOR ONE DIRECTION FOR BOTH DIRECTIONS	100 (4) 2 @ 100 (4)	SOLID SOLID	YELLOW YELLOW	140 (5 1/2) C-C FROM SKIP-DASH CENTERLINE 280 (11) C-C OMIT SKIP-DASH CENTERLINE BETWEEN
LANE LINES	100 (4) 125 (5) ON FREEWAYS	SKIP-DASH SKIP-DASH	WHITE WHITE	3 m (10') LINE WITH 9 m (30') SPACE
DOTTED LINES (EXTENSIONS OF CENTER, LANE OR TURN LANE MARKINGS)	SAME AS LINE BEING EXTENDED	SKIP-DASH	SAME AS LINE BEING EXTENDED	600 (2') LINE WITH 1.8 m (6') SPACE
EDGE LINES	100 (4)	SOLID	YELLOW-LEFT WHITE-RIGHT	OUTLINE MOUNTABLE MEDIANS IN YELLOW; EDGE LINES ARE NOT USED NEXT TO BARRIER CURB
TURN LANE MARKINGS	150 (6) LINE; FULL SIZE LETTERS & SYMBOLS (2.4 m (8'))	SOLID	WHITE	SEE TYPICAL TURN LANE MARKING DETAIL
TWO WAY LEFT TURN MARKING	2 @ 100 (4) EACH DIRECTION 2.4 m (8') LEFT ARROW	SKIP-DASH AND SOLID IN PAIRS	YELLOW WHITE	3 m (10') LINE WITH 9 m (30') SPACE FOR SKIP-DASH; 140 (5 1/2) C-C BETWEEN SOLID LINE AND SKIP-DASH LINE SEE TYPICAL TWO-WAY LEFT TURN MARKING DETAIL
CROSSWALK LINES (PEDESTRIAN) A. DIAGONALS (BIKE & EQUESTRIAN) B. LONGITUDINAL BARS (SCHOOL)	2 @ 150 (6) 300 (12) @ 45° 300 (12) @ 90°	SOLID SOLID SOLID	WHITE WHITE WHITE	NOT LESS THAN 1.8 m (6') APART 600 (2') APART SEE TYPICAL CROSSWALK MARKING DETAILS.
STOP LINES	600 (24)	SOLID	WHITE	PLACE 1.2 m (4') IN ADVANCE OF AND PARALLEL TO CROSSWALK, IF PRESENT. OTHERWISE, PLACE AT DESIRED STOPPING POINT, PARALLEL TO CROSSROAD CENTERLINE, WHERE POSSIBLE
PAINTED MEDIANS	2 @ 100 (4) WITH 300 (12) DIAGONALS @ 45° NO DIAGONALS USED FOR 1.2 m (4') WIDE MEDIANS	SOLID	YELLOW; TWO WAY TRAFFIC WHITE; ONE WAY TRAFFIC	280 (11) C-C FOR THE DOUBLE LINE SEE TYPICAL PAINTED MEDIAN MARKING.
GORE MARKING AND CHANNELIZING LINES	200 (8) WITH 300 (12) DIAGONALS @ 45°	SOLID	WHITE	DIAGONALS: 4.5 m (15') C-C (LESS THAN 50 km/h (30 MPH)) 6 m (20') C-C (50 km/h (30 MPH) TO 70 km/h (45 MPH)) 9 m (30') C-C (OVER 70 km/h (45 MPH))
RAILROAD CROSSING	600 (24) TRANSVERSE LINES; "RR" IS 1.8 m (6') LETTERS; 400 (16) LINE FOR "X"	SOLID	WHITE	SEE STATE STANDARD 780001 AREA OF: "R"=0.33m ² (3.6 SQ. FT.) EACH "X"=5.0 m ² (54.0 SQ. FT.)
SHOULDER DIAGONALS	300 (12) @ 45°	SOLID	WHITE - RIGHT YELLOW - LEFT	15 m (50') C-C (LESS THAN 50 km/h (30 MPH)) 25 m (75') C-C (50 km/h (30 MPH) TO 70 km/h (45 MPH)) 45 m (150') C-C (OVER 70 km/h (45 MPH))

FOR FURTHER DETAILS ON PAVEMENT MARKING REFER TO STANDARD SPECIFICATIONS FOR ROAD AND BRIDGE CONSTRUCTION AND STATE STANDARD 780001.

All dimensions are in millimeters (inches) unless otherwise shown.

ILLINOIS DEPARTMENT OF TRANSPORTATION

DISTRICT ONE
TYPICAL PAVEMENT
MARKINGS

REVISIONS	
NAME	DATE
EVERS	03-19-90
T. RAMMACHER	10-27-94
ALEX HOUSEH	10-09-96
ALEX HOUSEH	10-17-96
T. RAMMACHER	01-06-00

SCALE: NONE
DATE 3/25/02

DRAWN BY CADD
CHECKED BY

P. A. RYE	SECTION	COUNTY	TOTAL SHEETS	SHEET NO
	04-00023-00-BT	COOK	12	11
STA.		TO STA.		
FED. ROAD DIST. NO. 1	ILLINOIS	FED. AID PROJECT		
CONTRACT NO. 93849		CHM-0001649		

VARIABLE - TO MEET EXISTING DIMENSIONS AND FIELD CONDITIONS (SEE NOTE ②)

PROP. CONC. CURB OR CURB AND GUTTER REPLACEMENT IN ACCORDANCE WITH STATE STANDARD 606001. (SEE NOTE ②)

SAW CUT FULL DEPTH - INCLUDED IN THE COST OF SIDEWALK, DRIVEWAY OR MEDIAN SURFACE REMOVAL PAY ITEM.

EXISTING OR PROPOSED BITUMINOUS SURFACE (IF APPLICABLE)

SEE STATE STANDARD 606001

450 (18) MAX.

5 (1/4) **

EXISTING SIDEWALK, DRIVEWAY, MEDIAN SURFACE OR GROUND.

PROPOSED SIDEWALK, DRIVEWAY PAVEMENT, MEDIAN SURFACE OR SALT TOLERANT SOD AND TOP SOIL, 100 (4) SOD RESTORATION (SEE NOTE ①).

EXISTING CONCRETE PAVEMENT, CONCRETE BASE COURSE OR FLEXIBLE PAVEMENT

75 (3) MIN.

SUITABLE BACKFILL MATERIAL (INCLUDED IN THE COST OF CURB OR CURB AND GUTTER REMOVAL AND REPLACEMENT)

PROPOSED 20 (3/4) PREFORMED EXPANSION JOINT AT CONCRETE SIDEWALKS, DRIVEWAYS, AND MEDIANS. (INCLUDED IN THE COST OF CURB OR CURB AND GUTTER REMOVAL AND REPLACEMENT.)

* 75 (3) MINIMUM FROM TOP AND BOTTOM OF THE CONCRETE PAVEMENT OR BASE COURSE.

** IF THE FINAL SURFACE OF THE PAVEMENT IS CONCRETE, THE GUTTER IS TO BE FLUSH WITH THE PAVEMENT.

NOTE: ① SIDEWALK, DRIVEWAY PAVEMENT OR MEDIAN SURFACE SHALL BE SIMILAR TO THE MATERIAL BEING REMOVED AND WILL BE PAID FOR SEPARATELY.

SALT TOLERANT SOD AND TOP SOIL, 100 (4) RESTORATION WILL NOT BE PAID FOR SEPARATELY, BUT SHALL BE INCLUDED IN THE COST OF CURB OR CURB AND GUTTER REMOVAL AND REPLACEMENT.

② CURB OR CURB AND GUTTER REPLACEMENT SHALL MATCH THE SHAPE OF THE EXISTING CURB OR CURB AND GUTTER UNLESS OTHERWISE SPECIFIED.

③ FOR CURB OR CURB AND GUTTER REMOVAL AND REPLACEMENT ADJACENT TO FLEXIBLE PAVEMENT DELETE EPOXY COATED TIE BARS.

④ LONGITUDINAL BARS, IF ENCOUNTERED IN THE EXISTING CURB OR CURB AND GUTTER, ARE NOT TO BE REPLACED. CUTTING AND REMOVING LONGITUDINAL BARS SHALL BE INCLUDED IN THE COST OF CURB OR CURB AND GUTTER REMOVAL AND REPLACEMENT.

⑤ THE COST OF BITUMINOUS SURFACE REMOVAL IN THE EXISTING GUTTER FLAG SHALL BE INCLUDED IN THE COST OF THE CURB AND GUTTER REMOVAL AND REPLACEMENT.

⑥ THE REMOVAL AND REPLACEMENT OF THE EXISTING CURB OR CURB AND GUTTER SHALL BE DONE IN ACCORDANCE WITH THE APPLICABLE PORTIONS OF SECTION 440 AND 606 OF THE STANDARD SPECIFICATIONS.

⑦ THE LOCATIONS OF REMOVAL AND REPLACEMENT OF EXISTING CURB OR CURB AND GUTTER SHALL BE DETERMINED BY THE RESIDENT ENGINEER AT THE TIME OF CONSTRUCTION.

UNSUITABLE SUB-BASE MATERIAL TO BE REMOVED, IF DIRECTED BY THE ENGINEER, SHALL BE REPLACED WITH EITHER SUB-BASE GRANULAR MATERIAL, TYPE B OR ADDITIONAL THICKNESS OF CONCRETE.

REMOVAL AND REPLACEMENT 100 (4) OR LESS IS INCLUDED IN THE COST OF CURB OR CURB AND GUTTER REMOVAL AND REPLACEMENT.

REMOVAL AND REPLACEMENT IN EXCESS OF 100 (4) WILL BE PAID FOR IN ACCORDANCE WITH ARTICLE 109.04 OF THE STANDARD SPECIFICATIONS.

PROPOSED NO. 20 (NO. 6) EPOXY COATED TIE BARS 600 (24) LONG AT 600 (24) CENTERS WILL NOT BE PAID FOR SEPARATELY. DELETE EPOXY COATED TIE BARS IF EXISTING TIE BARS ARE USUABLE AS DETERMINED BY THE ENGINEER. (SEE NOTE ③).

BASIS OF PAYMENT:

THIS WORK WILL BE PAID FOR AT THE CONTRACT UNIT PRICE PER METER (FOOT) FOR "CURB REMOVAL AND REPLACEMENT" OR "COMBINATION CONCRETE CURB AND GUTTER REMOVAL AND REPLACEMENT".

ALL DIMENSIONS ARE IN MILLIMETERS (INCHES) UNLESS OTHERWISE SHOWN.

CURB OR CURB AND GUTTER REMOVAL AND REPLACEMENT

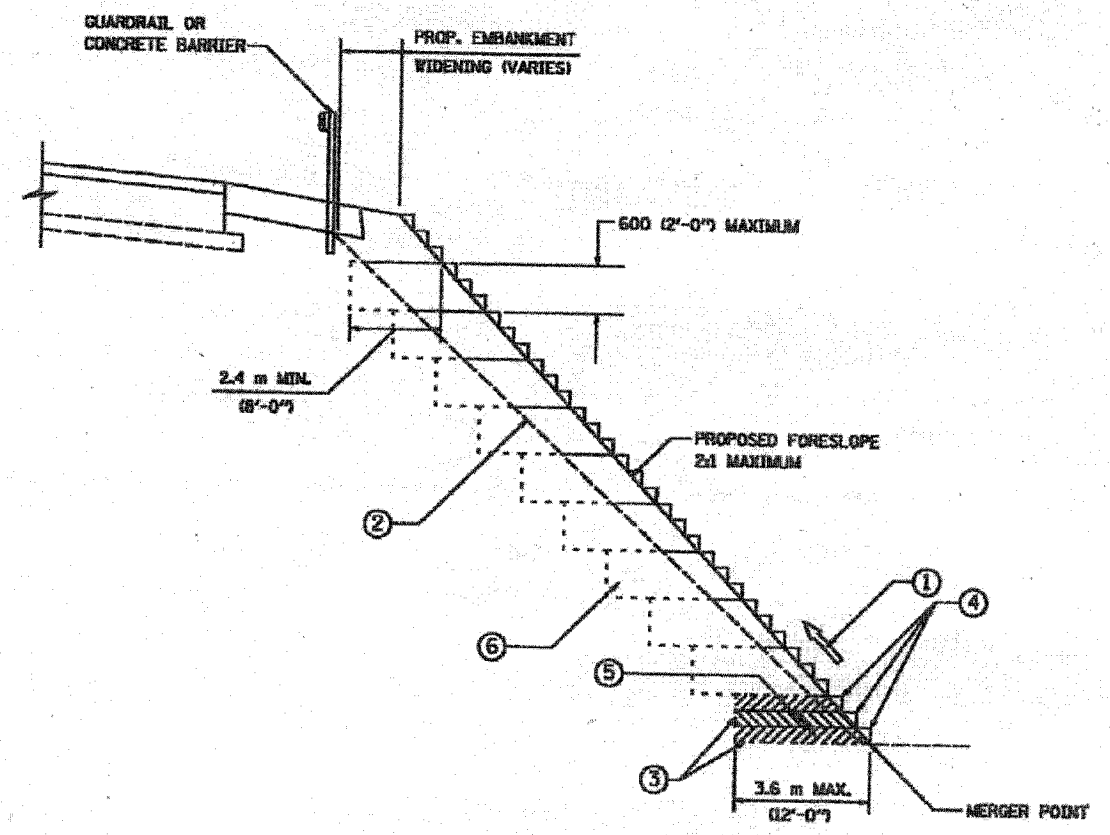
REVISIONS	
NAME	DATE
M. DE YONG	05/28/91
A. HOUSEH	03/11/94
R. SHAH	02/24/95
R. SHAH	03/02/95
R. SHAH	08/19/96
R. SHAH	09/12/96
R. SHAH	09/19/96
R. SHAH	10/03/96
A. ABBAS	03/21/97
M. COMEZ	01/22/01

ILLINOIS DEPARTMENT OF TRANSPORTATION
CURB OR CURB AND GUTTER REMOVAL AND REPLACEMENT

SCALE: NONE
DATE 12/04/2002

DRAWN BY
CHECKED BY

BD600-06 (80-24)
REVISION DATE: 12/06/88



**TYPICAL BENCHING DETAIL
FOR EMBANKMENT**

NOTES:

- ① CONSTRUCT SUCCEEDING BENCH CUTS AND EMBANKMENT PLACEMENT AND COMPACTION FROM BOTTOM TO TOP IN STAIRSTEP FASHION.
- ② EXISTING FORESLOPE PREPARED IN ACCORDANCE WITH ARTICLE 205.04 OF THE STANDARD SPECIFICATIONS.
- ③ BENCH CUT EXISTING SLOPE TYPICAL FOR EACH STEP.
- ④ TRIM TO FINAL SLOPE.
- ⑤ EQUAL 200 (8-INCH) LIFTS OF EMBANKMENT COMPACTED IN ACCORDANCE WITH ARTICLE 205.06 OF THE STANDARD SPECIFICATIONS.
- ⑥ EXCAVATION OF BENCH CUTS WITHIN EXISTING EMBANKMENT WILL BE PAID FOR AT THE CONTRACT UNIT PRICE PER CUBIC MEYER OR CUBIC YARD FOR "EARTH EXCAVATION (SPECIAL)". THIS PRICE WILL INCLUDE ALL LABOR AND MATERIAL NO ADDITIONAL COMPENSATION WILL BE ALLOWED.

ALL DIMENSIONS ARE IN MILLIMETERS (INCHES) UNLESS OTHERWISE SHOWN.

ILLINOIS DEPARTMENT OF TRANSPORTATION

**BENCHING DETAIL
FOR EMBANKMENT
WIDENING**

REVISIONS	
NAME	DATE

SCALE: NONE
DATE: 10/18/2002

DRAWN BY: CAD
CHECKED BY: S.E.B.
BD-51
REVISION DATE: