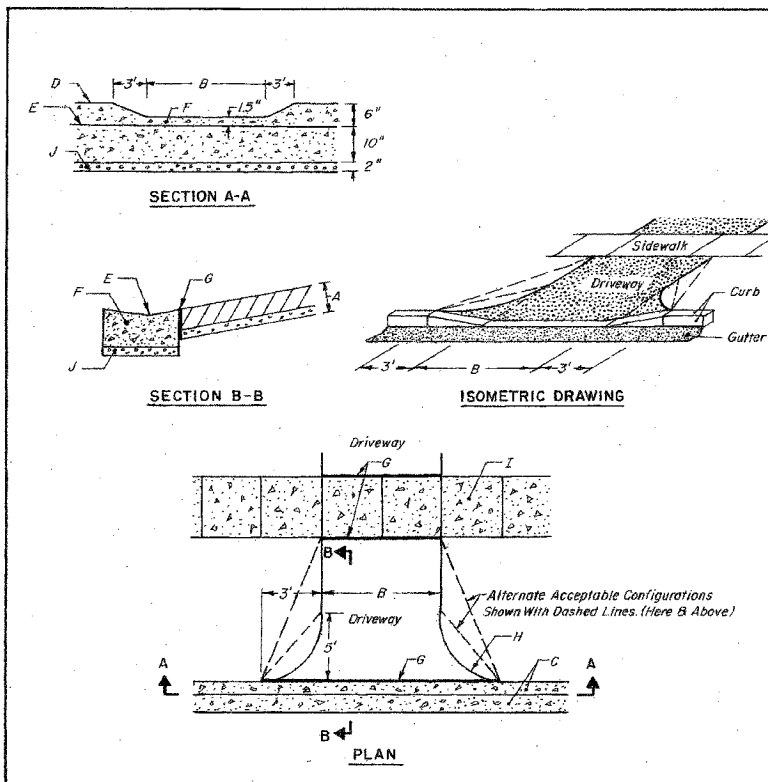


F.A.P. RTE.	SECTION	COUNTY	TOTAL SHEETS	SHEET NO.
	06-00096-00-SW	DU PAGE	16	14
FEDERAL RD. DIST. NO.	ILLINOIS		FEDERAL AID PROJECT	
CONTRACT: 83851				



CONSTRUCTION NOTES

- For Concrete Driveways, Min. 5" P.C.C. Over a Min. 2" Compacted Aggregate Base. For Asphalt Driveways, Min. 2" Bituminous Concrete Over a Min. 6" Compacted Aggregate Base.
- Min. Width 9' Max. 20'
- Curb & Gutter
- Top of Curb
- Flow Line of Gutter
- Depressed Type Curb & Gutter
- 3/4" Expansion Joint Required For Concrete Driveways Only.
- 5' Radius
- P.C.C. Sidewalk, See Notes 2 & 3.
- Min. 2" Aggregate Base

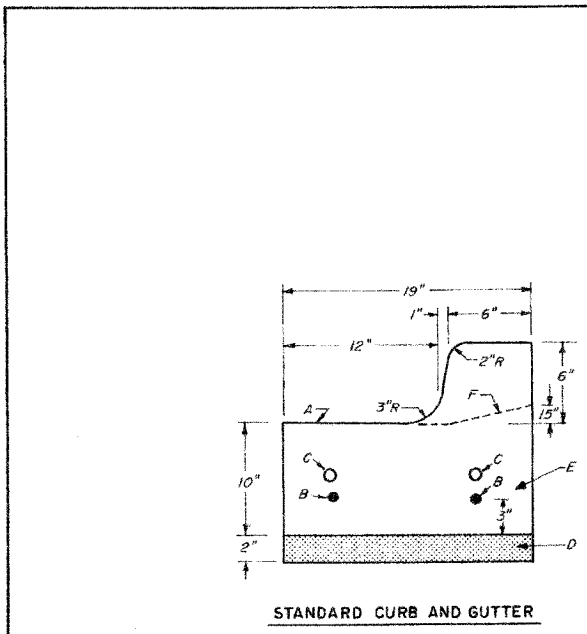
GENERAL NOTES

- For Concrete Driveways Wider Than 14', a Contraction Joint Shall be Located Along The Centerline of The Driveway.
- Sidewalk Shall be a Minimum of 5" Thick.
- A Minimum 6-Bag Mix Concrete Shall be Used For Concrete Driveways, Sidewalks, And Curb and Gutter.

VILLAGE OF WESTMONT
RESIDENTIAL DRIVEWAY
DETAIL

ISSUED: March 1988
 REVISED: August 2002
 August 2003

DWG. R-7-2



CONSTRUCTION NOTES

- Slope 3/4" / Ft.
- 2 - #4 Bars Continuous, Optional.
- 2 Dowel Bars at Expansion Joints.
- Min. 2" Aggr. Base
- Min. 6-Bag Mix Concrete.
- Depressed Curb Configuration.

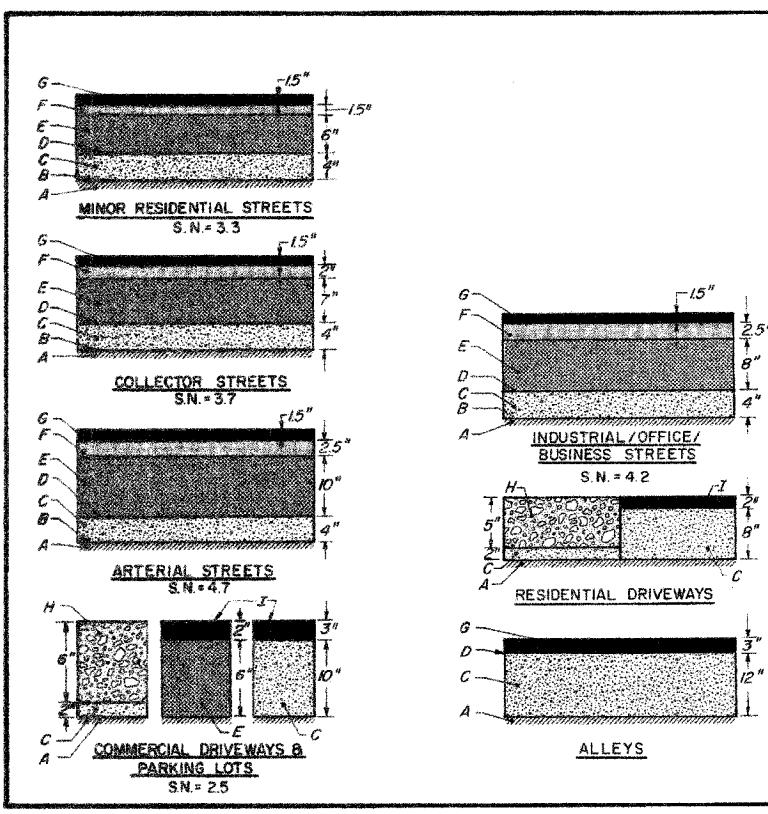
GENERAL NOTES

- Standard Curb and Gutter Shall be Used For All New Construction. Roll-Type Curb and Gutter is Not Acceptable.
- Preformed Expansion Joints of 3/4" Thickness Shall be Spaced a Maximum of 40' Apart, and at All Radius Points and 4' Either Side of Inlets.
- Formed or Saw-Cut Contraction Joints Shall be Spaced a Maximum of 10' Apart and Filled with a Silicone Sealant.
- Concrete Barrier-Type Curb and Gutter Shall be Provided for All Parking Lots Accommodating Five (5) or More Parking Spaces.

VILLAGE OF WESTMONT
CURB AND GUTTER DETAIL

ISSUED: March 1988
 REVISED: August 2003

DWG. R-6-1



CONSTRUCTION NOTES

- Approved Subgrade
- Geotechnic Fabric for Soil Stabilization See Note 4.
- Aggr. Base Course, Type B, C, A-B
- 0.3 Gal./SY Bit. Materials (Prime Coat)
- Bit. Aggregate Mixture (BAM), M.S. = 1500
- Bit. Conc. Binder Course
- Bit. Conc. Surface Course, Class I
- P.C.C., Min. 6-Bag Mix
- Bit. Conc. Surface Course

GENERAL NOTES

- These Are Minimum Standards Only. Structural Design of Streets Shall be Determined Using State Highway Standards, (With These Minimums) Except Where Approved by Village Engineer.
- 2% Crown to be Installed on All Streets.
- 2% Inverted Crown to be Installed in Alleys.
- Geotechnic Fabric Over Subgrade shall be Minimum 4 oz. per Square Yard. Woven or Non-Woven Engineering Fabric, Meeting State Standards.

VILLAGE OF WESTMONT
MINIMUM PAVEMENT
CROSS - SECTIONS

ISSUED: March 1988
 REVISED:

DWG. R-1-0



date 02-22-06 detailed J. HOLZINGER
 designed M. KUNTZ checked A. BRYANT



VILLAGE OF WESTMONT
 2006 CMAQ SIDEWALK
 MISCELLANEOUS DETAILS (2 OF 2)

project 39606 contract
 drawing rev.
 sheet 14 of 16 sheets

file I:\WESTMONT\39606-2006 SW DESIGN\CAD\BID\DETAILS_2

Scale For Microfilm
 Inches
 Copyright © 2006 Burns and McDonnell Engineering Company, Inc.