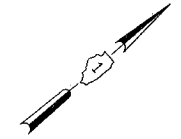


FILE NO.	SECTION	COUNTY	TOTAL SHEETS	SHEET NO.
3809	05-00050-00-CH	DUPAGE	36	5
ALIGNMENT & BENCHMARKS				
FED. ROAD DISTRICT NO. 7	ILLINOIS	FED. AID PROJECT F-0021(068)		

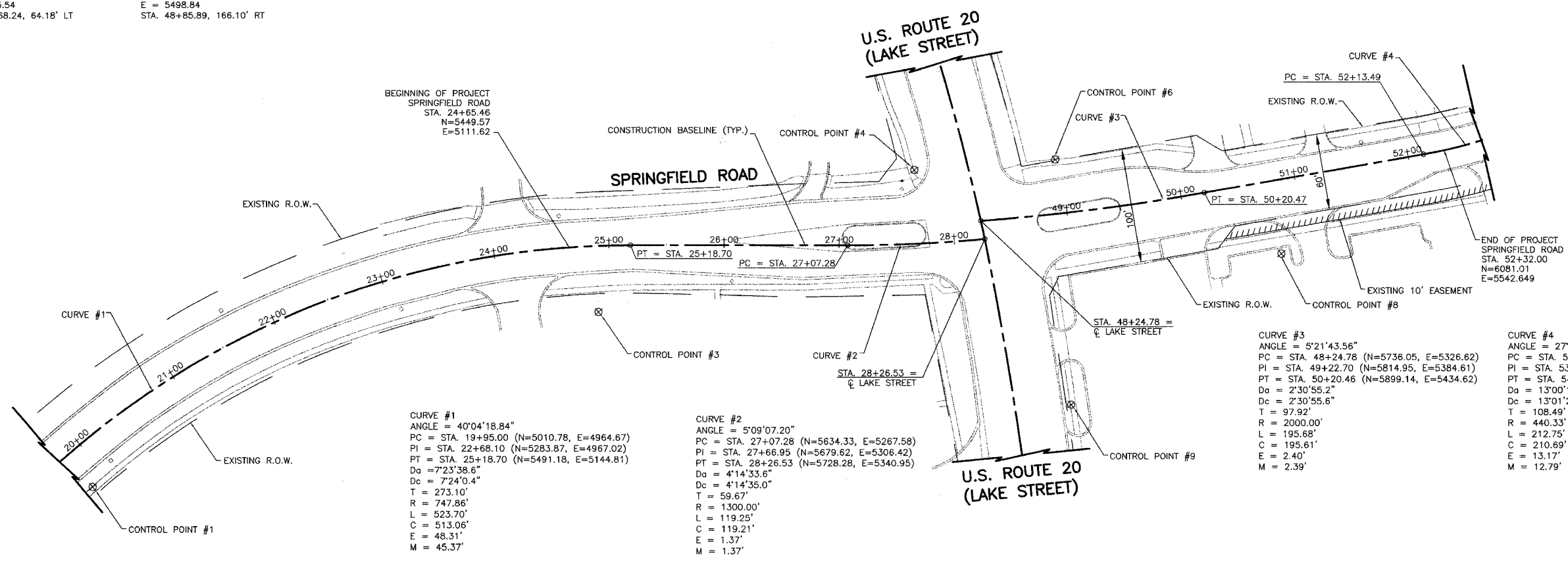
CONTRACT NO. 83852



LEGEND

- — — — — EXISTING RIGHT-OF-WAY LINE
- ////// EXISTING EASEMENT LINE

- CONTROL POINT #1**
CUT IN CONC. SIDEWALK
N = 5000.00
E = 5000.00
STA. 19+84.22, 35.33' RT
- CONTROL POINT #2**
CUT IN CONC. SIDEWALK
N = 5819.70
E = 5328.40
STA. 48+94.90, 46.91' LT
- CONTROL POINT #3**
SET IRON ROD IN BERM
N = 5432.36
E = 5170.87
STA. 24+88.70, 57.52' RT
- CONTROL POINT #4**
CUT ON HANDHOLE
N = 5720.97
E = 5255.54
STA. 27+68.24, 64.18' LT
- CONTROL POINT #6**
CUT IN CONC. SIDEWALK
N = 5819.70
E = 5328.40
STA. 48+94.90, 46.91' LT
- CONTROL POINT #8**
CUT IN CONC. SIDEWALK
N = 5915.26
E = 5518.48
STA. 50+77.15, 63.87' RT
- CONTROL POINT #9**
CUT IN CONC. SIDEWALK
N = 5691.61
E = 5498.84
STA. 48+85.89, 166.10' RT
- DPC BENCH MARK #117001**
BRASS DISK SET IN CONCRETE
SW CORNER OF LAWRENCE AND GARY AVENUE
ELEV = 798.86
- TEMPORARY BENCH MARK #12**
SE FLANGE (NOT BOLT) OF FIRE HYDRANT
SW CORNER OF LAKE STREET AND SPRINGFIELD DRIVE
ELEV = 787.48



CURVE #1
ANGLE = 40°04'18.84"
PC = STA. 19+95.00 (N=5010.78, E=4964.67)
PI = STA. 22+68.10 (N=5283.87, E=4967.02)
PT = STA. 25+18.70 (N=5491.18, E=5144.81)
Da = 7°23'38.6"
Dc = 7°24'0.4"
T = 273.10'
R = 747.86'
L = 523.70'
C = 513.06'
E = 48.31'
M = 45.37'

CURVE #2
ANGLE = 5°09'07.20"
PC = STA. 27+07.28 (N=5634.33, E=5267.58)
PI = STA. 27+66.95 (N=5679.62, E=5306.42)
PT = STA. 28+26.53 (N=5728.28, E=5340.95)
Da = 4°14'33.6"
Dc = 4°14'35.0"
T = 59.67'
R = 1300.00'
L = 119.25'
C = 119.21'
E = 1.37'
M = 1.37'

CURVE #3
ANGLE = 5°21'43.56"
PC = STA. 48+24.78 (N=5736.05, E=5326.62)
PI = STA. 49+22.70 (N=5814.95, E=5384.61)
PT = STA. 50+20.46 (N=5899.14, E=5434.62)
Da = 2°30'55.2"
Dc = 2°30'55.6"
T = 97.92'
R = 2000.00'
L = 195.68'
C = 195.61'
E = 2.40'
M = 2.39'

CURVE #4
ANGLE = 27°24'20.88"
PC = STA. 52+13.49 (N=6065.10, E=5533.20)
PI = STA. 53+21.98 (N=6158.38, E=5588.60)
PT = STA. 54+26.24 (N=6266.72, E=5594.33)
Da = 13°00'15.6"
Dc = 13°01'20.8"
T = 108.49'
R = 440.33'
L = 212.75'
C = 210.69'
E = 13.17'
M = 12.79'

REVISIONS	
NAME	DATE

ILLINOIS DEPARTMENT OF TRANSPORTATION
ALIGNMENT & BENCHMARKS
SPRINGFIELD ROAD

50 0 50
SCALE IN FEET

DRAWN BY: KRK
CHECKED BY: JRV
DATE: 04/04/06