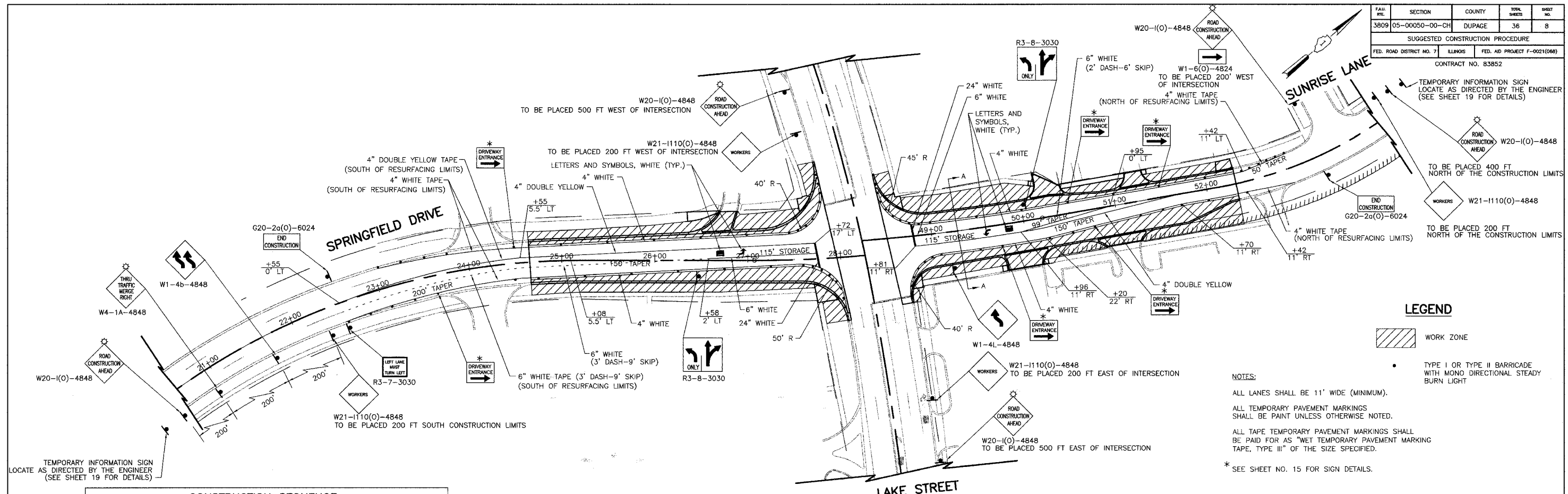


SECTION	COUNTY	TOTAL SHEETS	SHEET NO.
3809 05-00050-00-CH	DUPAGE	36	8
SUGGESTED CONSTRUCTION PROCEDURE			
FED. ROAD DISTRICT NO. 7	ILLINOIS	FED. AID PROJECT F-021(066)	
CONTRACT NO. 83852			



LEGEND

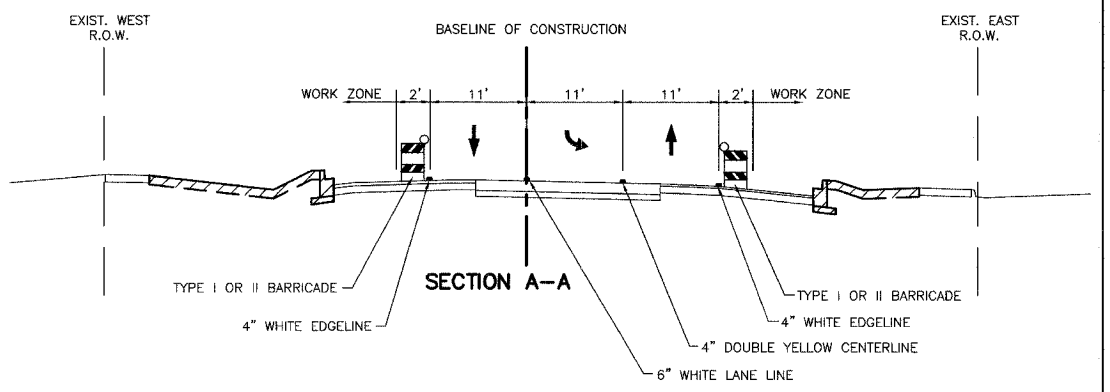
- WORK ZONE
- TYPE I OR TYPE II BARRICADE WITH MONO DIRECTIONAL STEADY BURN LIGHT

NOTES:

- ALL LANES SHALL BE 11' WIDE (MINIMUM).
- ALL TEMPORARY PAVEMENT MARKINGS SHALL BE PAINT UNLESS OTHERWISE NOTED.
- ALL TAPE TEMPORARY PAVEMENT MARKINGS SHALL BE PAID FOR AS "WET TEMPORARY PAVEMENT MARKING TAPE, TYPE III" OF THE SIZE SPECIFIED.
- * SEE SHEET NO. 15 FOR SIGN DETAILS.

CONSTRUCTION SEQUENCE	
PRE-STAGE 1 (NOT ILLUSTRATED)	
1.	REMOVE TREES WITHIN MEDIANS ON SPRINGFIELD DRIVE.
2.	INSTALL AND ACTIVATE TEMPORARY TRAFFIC SIGNALS AND TEMPORARY TRAFFIC SIGNAL INTERCONNECT AT THE INTERSECTION OF LAKE STREET AND SPRINGFIELD DRIVE. (NOTE: THE EXISTING SIGNALS SHALL BE TURNED OFF AT THE SAME TIME THE TEMPORARY SIGNALS ARE ACTIVATED. SEE SHEETS 20 AND 21 FOR SIGNAL DETAILS.)
3.	REMOVE EXISTING SIGNAL POLES AND EQUIPMENT.
STAGE 1 (NOT ILLUSTRATED)	
1.	REMOVE EXISTING MEDIANS AND REPLACE WITH SUB-BASE GRANULAR MATERIAL, TYPE B, 4" AND BITUMINOUS BASE COURSE, SUPERPAVE, 8". DAILY LANE CLOSURES IN ACCORDANCE WITH IDOT STANDARD 701501 OR 701606 SHALL BE USED. AT THE END OF EACH WORK DAY, THE CONTRACTOR SHALL PLACE TYPE 2 BARRICADES AT 10 FOOT SPACING WITHIN EACH EXCAVATION.
STAGE 2	
1.	REMOVE ALL CONFLICTING PAVEMENT MARKINGS.
2.	PLACE ALL CONSTRUCTION SIGNS, TEMPORARY PAVEMENT MARKINGS AND BARRICADES AS SHOWN ON THIS SHEET. SHIFT TRAFFIC AS INDICATED.
3.	CLOSE EXISTING SIDEWALKS AND BIKEPATHS IN ACCORDANCE WITH IDOT STANDARD 701801.
4.	CONSTRUCT STORM SEWERS AND DRAINAGE STRUCTURES OUTSIDE EXISTING EDGES OF PAVEMENT. CONSTRUCT STORM SEWER CROSSINGS USING IDOT STANDARD 701501 AND 701606 (SEE NOTE #7 UNDER "STORM & SANITARY SEWER" ON SHEET NO. 2).
5.	CONSTRUCT ALL PAVEMENT WIDENING, CURB AND GUTTER, SIDEWALKS, ENTRANCES, ETC., OUTSIDE EXISTING PAVEMENT.
6.	THE CONSTRUCTION OF THE CONCRETE DRIVEWAYS AT THE NORTHEAST CORNER OF THE INTERSECTION SHALL BE ALTERNATED SO THAT AT LEAST ONE DRIVEWAY IS OPEN TO TRAFFIC AT ALL TIMES.
STAGE 3 (NOT ILLUSTRATED)	
1.	REMOVE ALL BARRICADES AND PLACE BINDER COURSE MAINTAINING TRAFFIC PER STANDARD 701501 OR 701606. IF SURFACE WILL NOT BE PLACED WITHIN 14 DAYS, PLACE TEMPORARY PAVEMENT MARKINGS MATCHING THE PERMANENT MARKINGS USING PAINT.
2.	INSTALL AND ACTIVATE PERMANENT TRAFFIC SIGNALS. (NOTE: THE TEMPORARY SIGNALS SHALL BE TURNED OFF AT THE SAME TIME THE PERMANENT SIGNALS ARE ACTIVATED.)
3.	COMPLETE ALL LANDSCAPING.
4.	PLACE SURFACE COURSE MAINTAINING TRAFFIC PER STANDARD 701501 OR 701606.
5.	PLACE PERMANENT PAVEMENT MARKINGS AND COMPLETE SIGNING WORK.

MAINTENANCE OF TRAFFIC GENERAL NOTES	
1.	TRAFFIC CONTROL DEPICTED ON THIS PLAN AND THE APPLICABLE I.D.O.T. DETAILS ARE THE MINIMUM REQUIREMENT. OTHER WORK OR SIGNING MAY BE REQUIRED BY THE ENGINEER.
A.	SIGN SPACING FOR STANDARDS 701101, 701106, 701501 AND 701606 MAY BE REDUCED TO THE REQUIREMENTS OF STANDARD 701501 WHEN THE POSTED SPEED LIMIT IS LESS THAN 45 MPH.
B.	THE EXACT NUMBER, LOCATION AND SPACING OF ALL SIGNS AND TRAFFIC CONTROL DEVICES SHALL FIT FIELD CONDITIONS AS DIRECTED BY THE ENGINEER.
2.	BARRICADES WILL BE REQUIRED ADJACENT TO PAVEMENT EDGES WHERE WIDENING, CURB AND GUTTER OR OVERLAYING WORK IS BEING DONE, AS SPECIFIED IN SECTIONS 701 AND 702 OF THE "STANDARD SPECIFICATIONS" EXCEPT THAT THE BARRICADES SHALL BE TYPE II (OR DRUMS), NON-METALLIC WITH MONO-DIRECTIONAL STEADY-BURN LIGHTS. SPACING SHALL BE AS SHOWN ON THE CONSTRUCTION STAGING PLANS UNLESS OTHERWISE DIRECTED BY THE ENGINEER. BARRICADES THAT MUST BE PLACED IN EXCAVATED AREAS SHALL HAVE LEG EXTENSIONS INSTALLED SUCH THAT THE TOPS OF THE BARRICADES ARE IN COMPLIANCE WITH THE HEIGHT REQUIREMENTS OF STANDARD 702001.
3.	ALL TYPE II BARRICADES AT LANE DIVERSIONS WITHIN TAPER SECTIONS SHALL HAVE DIRECTION INDICATOR PANELS ON THE TOP RAILS.
4.	TYPE I OR II BARRICADES (OR DRUMS) EQUIPPED WITH ONE-WAY FLASHING LIGHTS WILL BE REQUIRED AT ALL OPEN TRENCHES, EXCAVATIONS, OPEN OR EXPOSED SEWER STRUCTURES, AND AT ANY OTHER LOCATIONS DESIGNATED BY THE ENGINEER OR LOCAL LAW ENFORCEMENT AGENCIES. BARRICADES SHALL BE PLACED AT 50' CENTERS ALONG TANGENTS, 25' ALONG TAPERS AND 10' AROUND RADII.
5.	ALL CONSTRUCTION SIGNS SHALL HAVE FLUORESCENT ORANGE BACKGROUNDS.
6.	DRUMS SHALL HAVE ALTERNATING REFLECTORIZED TYPE AA OR TYPE AP FLUORESCENT ORANGE AND REFLECTORIZED WHITE HORIZONTAL, CIRCUMFERENTIAL STRIPES.
7.	VERTICAL BARRICADES SHALL MEET THE REQUIREMENTS OF THE NATIONAL COOPERATIVE HIGHWAY RESEARCH PROGRAM (NCHRP) REPORT 350 AND THE SPECIAL PROVISION "WORK ZONE TRAFFIC CONTROL DEVICES". VERTICAL BARRICADES MAY BE USED IN LIEU OF CONES, DRUMS OR TYPE I AND TYPE II BARRICADES TO CHANNELIZE TRAFFIC. VERTICAL BARRICADES SHALL NOT BE USED IN LANE CLOSURE TAPERS.
8.	THE CONTRACTOR SHALL INFORM THE ENGINEER OF ANY STAGE CHANGE AT LEAST TWO WORKING DAYS IN ADVANCE OF THE CHANGE.
9.	ACCESS TO ALL PROPERTIES SHALL BE MAINTAINED AT ALL TIMES DURING CONSTRUCTION EXCEPT FOR PERIODS OF SHORT DURATION WHEN APPROVED BY THE ENGINEER. TEMPORARY ACCESS SHALL BE PROVIDED IN ACCORDANCE WITH THE SPECIAL PROVISION "AGGREGATE SURFACE COURSE FOR TEMPORARY ACCESS."
10.	THE FIRST TWO WARNING SIGNS IN EACH DIRECTION OF TRAVEL SHALL BE EQUIPPED WITH MONO-DIRECTIONAL AMBER FLASHING LIGHTS DURING HOURS OF DARKNESS. FLAGS ARE OPTIONAL.
11.	EXISTING TRAFFIC CONTROL DEVICES ARE TO BE PROTECTED FROM DAMAGE BY THE CONTRACTOR. ANY DAMAGE CAUSED BY HIS WORK SHALL BE REPAIRED TO THE SATISFACTION OF THE ENGINEER AT THE EXPENSE OF THE CONTRACTOR.
12.	WHEN REQUIRED, TEMPORARY LANE CLOSURES WILL BE ALLOWED ONLY BETWEEN THE HOURS OF 9:00 A.M. AND 3:00 P.M., WITH TRAFFIC MAINTAINED IN ACCORDANCE WITH STANDARD 701501 OR 701606 UNLESS OTHERWISE DIRECTED BY THE ENGINEER.
13.	"WORKERS" SIGN SHALL ONLY BE ERECTED WHEN WORKERS ARE PRESENT. SIGN MUST BE COVERED OR REMOVED WHEN NO WORKERS ARE PRESENT.



REVISIONS	
NAME	DATE

ILLINOIS DEPARTMENT OF TRANSPORTATION
SUGGESTED CONSTRUCTION PROCEDURE & MAINTENANCE OF TRAFFIC
 SPRINGFIELD ROAD

SCALE IN FEET

DRAWN BY: DJK
 CHECKED BY: JRV
 DATE: 04/04/06