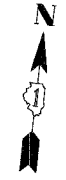
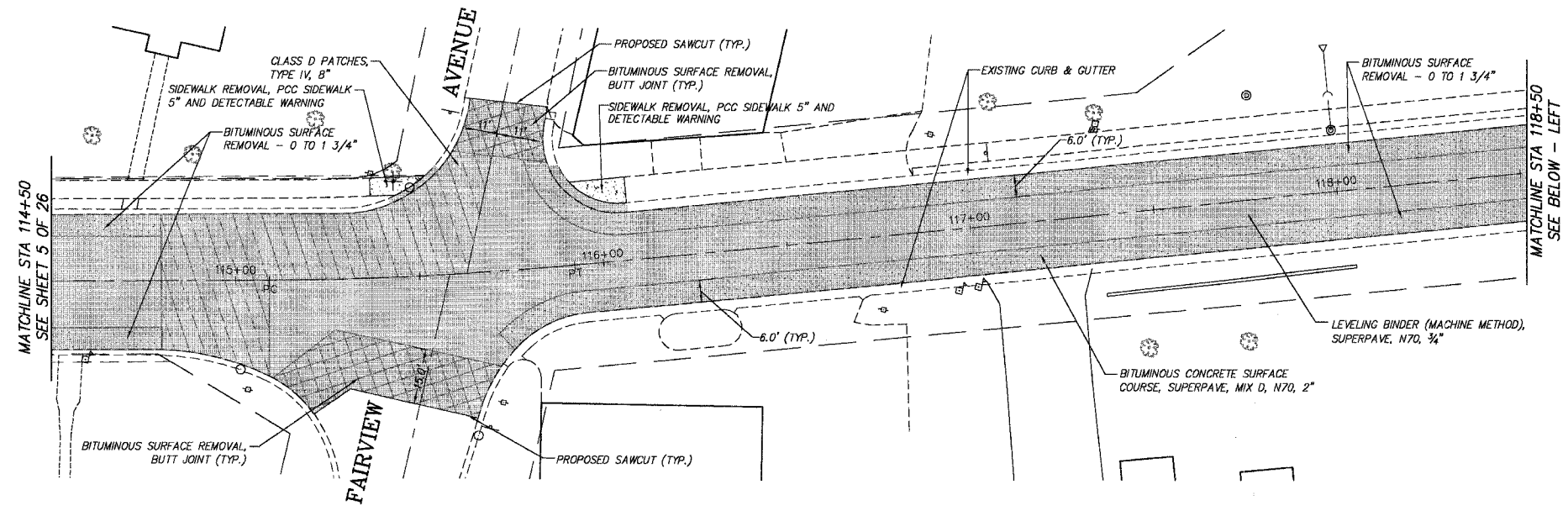


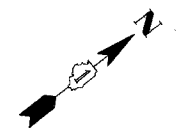
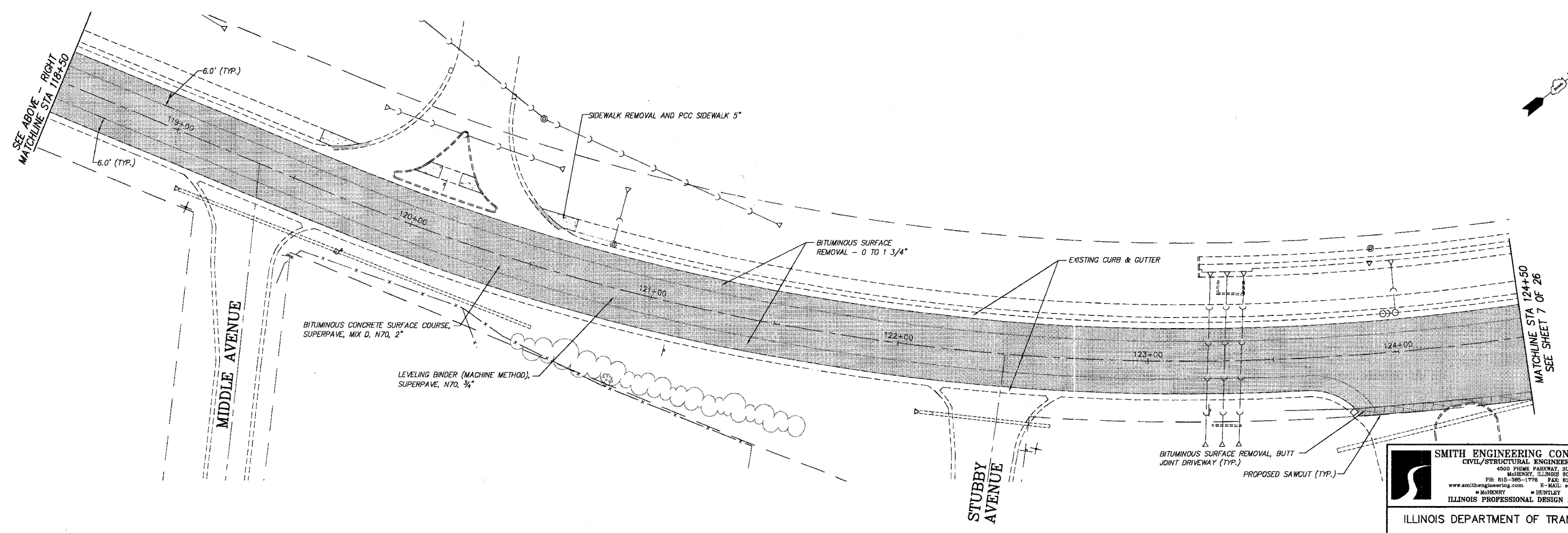
F.A.U. RTE.	SECTION	COUNTY	TOTAL SHEETS	SHEET NO.
168	05-00010-00-RS	MCHENRY	25	6
STA.	TO STA.			
FED. ROAD DIST. NO. 1		ILLINOIS HIGHWAY PROJECT		
CONTRACT # 83854				



PROJECT LEGEND:

	PROP. PAVEMENT RESURFACING AREA
	PROP. BITUMINOUS SURFACE REMOVAL BUTT JOINT OR BUTT JOINT DRIVEWAY
	PROP. BITUMINOUS SURFACE REMOVAL - 0 TO 1 3/4"
	PROP. CLASS D PATCHES, 8" *

NOTES:
 * SEE THE SUMMARY OF QUANTITIES FOR CLASS D PATCHES, 8" TYPES I, II, III, AND IV.
 THE PERIMETER OF THE CLASS D PATCHES SHALL BE SAW CUT AND PRIMED PRIOR TO REPLACEMENT WITH THE BITUMINOUS CONCRETE MIXTURE. THIS WORK IS INCLUDED IN THE COST OF THE CLASS D PATCHES OF THE TYPE SPECIFIED.



SMITH ENGINEERING CONSULTANTS, INC.
 CIVIL/STRUCTURAL ENGINEERS AND SURVEYORS
 4500 PRIME PARKWAY, SUITE 201
 MCHENRY, ILLINOIS 60050
 PH: 815-385-1770 FAX: 815-385-1781
 www.smithengineering.com E-MAIL: seo@smithengineering.com
 * MCHENRY * JOLIETT * WOODVILLE
 ILLINOIS PROFESSIONAL DESIGN FIRM # 184-000108

ILLINOIS DEPARTMENT OF TRANSPORTATION

VILLAGE OF JOHNSBURG
 JOHNSBURG ROAD
 ROADWAY PLAN

REVISIONS	
NAME	DATE
7.	
6.	
5.	
4.	
3.	
2.	
1.	

SCALE: DATE 01-10-06
 DRAWN BY TK
 CHECKED BY TEH

PLOT FILE: STANDARD
 VIEW: CE-06
 COUNTRY: ILL. 05/09/06-002.dwg