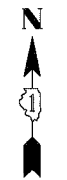
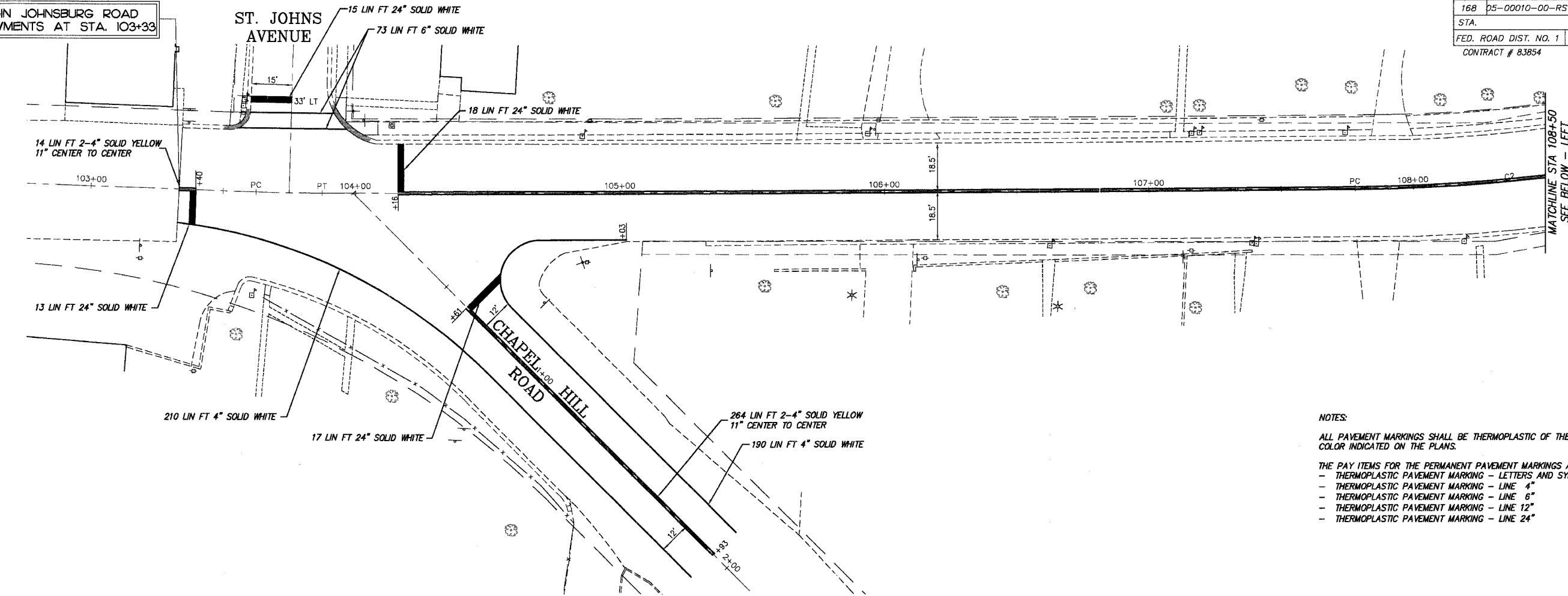
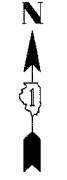
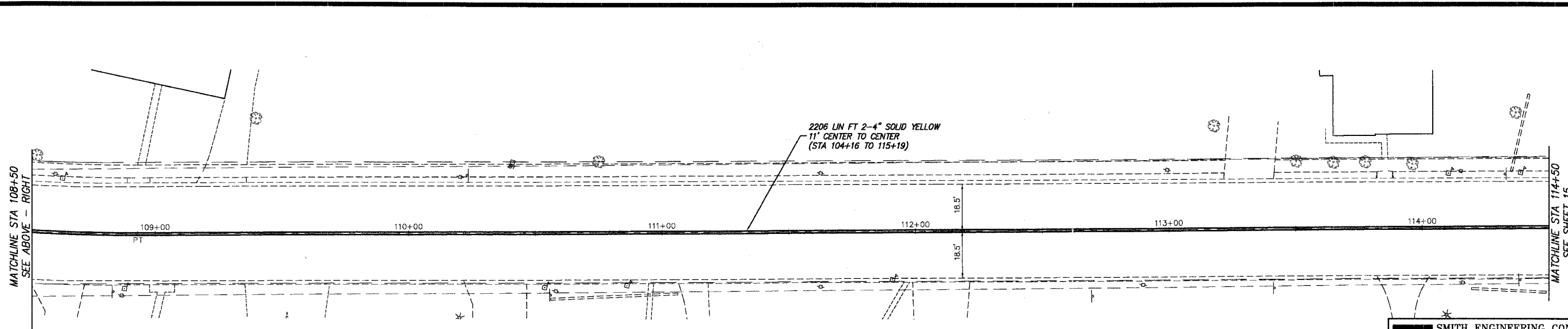


| | | | | |
|-----------------------|----------------|----------|-----------------|-----------|
| F.A.U. RTE. | SECTION | COUNTY | TOTAL SHEETS | SHEET NO. |
| 168 | 05-00010-00-RS | MCHENRY | 25 | 14 |
| STA. | TO STA. | | 114+50 | |
| FED. ROAD DIST. NO. 1 | | ILLINOIS | HIGHWAY PROJECT | |
| CONTRACT # 83854 | | | | |

BEGIN JOHNSBURG ROAD IMPROVEMENTS AT STA. 103+33



NOTES:
 ALL PAVEMENT MARKINGS SHALL BE THERMOPLASTIC OF THE SIZE AND COLOR INDICATED ON THE PLANS.
 THE PAY ITEMS FOR THE PERMANENT PAVEMENT MARKINGS ARE:
 - THERMOPLASTIC PAVEMENT MARKING - LETTERS AND SYMBOLS
 - THERMOPLASTIC PAVEMENT MARKING - LINE 4"
 - THERMOPLASTIC PAVEMENT MARKING - LINE 6"
 - THERMOPLASTIC PAVEMENT MARKING - LINE 12"
 - THERMOPLASTIC PAVEMENT MARKING - LINE 24"



SMITH ENGINEERING CONSULTANTS, INC.
 CIVIL/STRUCTURAL ENGINEERS AND SURVEYORS
 4500 PRIME PARKWAY, SUITE 201
 MCHENRY, ILLINOIS 60050
 PH: 815-385-1778 FAX: 815-385-1781
 www.smithengineering.com E-MAIL: seo@smithengineering.com
 * MCHENRY * HUNTLEY * YORKVILLE
 ILLINOIS PROFESSIONAL DESIGN FIRM # 184-000108

ILLINOIS DEPARTMENT OF TRANSPORTATION

VILLAGE OF JOHNSBURG
 JOHNSBURG ROAD
 PAVEMENT MARKING PLAN

| REVISIONS | |
|-----------|------|
| NO. | DATE |
| 7. | |
| 6. | |
| 5. | |
| 4. | |
| 3. | |
| 2. | |
| 1. | |

SCALE: 1" = 20'
 DATE 01-10-06
 DRAWN BY TK
 CHECKED BY TEH

PLOT FILE STANDARD
 COMP. FILE: 051006-605.DWG