

INDEX OF SHEETS

- 1 = COVER SHEET
- 2 = GENERAL NOTES, SCHEDULES, AND TYPICAL SECTION
- 3 = PLAN AND PROFILE
- 4 = GENERAL PLAN AND ELEVATION
- 5 = EAST AND WEST ABUTMENT DETAILS
- 6 = DECK BEAM DETAILS
- 7 = STEEL BRIDGE RAIL, TYPE SM
- 8 = PILE DETAILS
- 9 = CROSS SECTIONS

NAME AND ADDRESS OF UTILITIES	TYPE
COMED 123 Energy Avenue Rockford, IL 61109 Attn: Public Improvements (815) 490-2320	ELECTRIC
NICOR GAS 1844 W. Ferry Road Naperville, IL 60563 Attn: Scott Stogsdill (630) 983-8676 X2362	GAS
VERIZON 112 W. Elm Street Sycamore, IL 60178 Attn: Mike Brodzik (815) 895-1532	TELEPHONE
SBC 2404 8th Avenue Rockford, IL 61108 Attn: Steven Jones (815) 394-7270	TELEPHONE
MediaCom 2506 1/2 N. Bloomington Streator, IL 61365 Attn: Dale Peters (815) 672-5071	CABLE

**STATE OF ILLINOIS
DEPARTMENT OF TRANSPORTATION
PLANS FOR
PROPOSED LOCAL AGENCY IMPROVEMENT
FEDERAL-AID BRRP PROJECT**

SUMMARY OF QUANTITIES
CONSTRUCTION TYPE CODE: X080-2A

CODE NO.	ITEM	UNIT	QUANTITY
20200100	EARTH EXCAVATION	CU YD	154
20300100	CHANNEL EXCAVATION	CU YD	89
20700220	POROUS GRANULAR EMBANKMENT	CU YD	115
25001000	SEEDING CLASS 2, SPECIAL	ACRE	0.3
25100630	EROSION CONTROL BLANKET	SQ YD	246
35101400	AGGREGATE BASE COURSE, TYPE B	TON	232.8
40200800	AGGREGATE SURFACE COURSE, TYPE B	TON	167.0
50100100	REMOVAL OF EXISTING STRUCTURES	EACH	1
50200100	STRUCTURE EXCAVATION	CU YD	120
50300225	CONCRETE STRUCTURES	CU YD	16.8
50400305	PRECAST PRESTRESSED CONCRETE DECK BEAMS-17"	SQ FT	329
50500405	FURNISHING & ERECTING STRUCTURAL STEEL	POUND	5003
50700305	HARDWARE	POUND	2540
50800105	REINFORCEMENT BARS	POUND	4320
50901005	STEEL RAILING, TYPE SM	FOOT	66.3
51201000	FURNISHING METAL PILE SHELLS, 12"	FOOT	266
51202500	DRIVING & FILLING SHELLS	FOOT	266
51203200	TEST PILE - METAL SHELLS	EACH	1
51204900	PERMANENT STEEL SHEET PILING	SQ FT	2896
51500100	NAME PLATES	EACH	1
54213870	STEEL END SECTIONS, 15"	EACH	2
54200220	PIPE CULVERTS, CLASS D, TYPE I 15"	FOOT	32
67100100	MOBILIZATION	L SUM	1
70103700	TRAFFIC CONTROL COMPLETE	L SUM	1

• SEE SPECIAL PROVISIONS

LOCATION MAP SCALE 0 1 2 MILES

PLAN & PROFILE
HORIZONTAL 0 5 10 15 20 40 FT.
VERTICAL 0 5 10 FT.
CROSS SECTIONS
HORIZONTAL 0 5 10 FT.
VERTICAL 0 5 10 FT.

**BRIDGE REPLACEMENT &
REHABILITATION PROGRAM**

**T.R. 59
SECTION 01-22113-00-BR / OGLE COUNTY
SECTION 01-09115-00-BR / WINNEBAGO COUNTY
PROJECT BROS-141(62)
JOB NO. C-92-069-06
CONTRACT NO. 85386
2006**

STANDARDS

- 000001-04 STANDARD SYMBOLS, ABBREVIATIONS, & PATTERNS
- 280001-02 TEMPORARY EROSION CONTROL SYSTEMS
- 515001-02 NAME PLATE FOR BRIDGES
- 542401 METAL END SECTION FOR PIPE CULVERT
- 702001-06 TRAFFIC CONTROL DEVICES
- BLR-21-6 TYPICAL APPLICATION OF TRAFFIC CONTROL DEVICES FOR CONSTRUCTION ON RURAL LOCAL HIGHWAYS
- BLR-22-4 TYPICAL APPLICATION OF TRAFFIC CONTROL DEVICES FOR CONSTRUCTION ON RURAL LOCAL HIGHWAYS

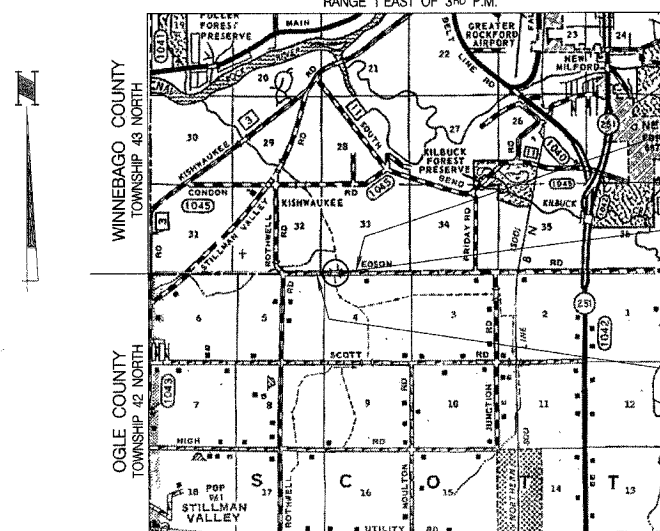
ATTENTION CONTRACTORS

THE ILLINOIS DEPARTMENT OF TRANSPORTATION BUREAU OF MATERIALS AND PHYSICAL RESEARCH, "PROJECT PROCEDURES GUIDE" IS APPLICABLE TO THIS PROJECT.

HIGHWAY CLASSIFICATION: LOCAL ROAD
DESIGN SPEED: 30 mph
ADT = <100 (2006) 1% TRUCKS
3 R GUIDELINES



NET LENGTH 300 FT. = 0.057 MILES
RANGE 1 EAST OF 3RD P.M.



SECTION ENDS AT STA. 11+50

PROPOSED STRUCTURE (S.N. 071-3327)
A SINGLE SPAN (1 @ 32'-0") 17" PRECAST, PRESTRESSED CONCRETE DECK BEAM STRUCTURE ON CLOSED STEEL SHEET PILE ABUTMENTS @ STA. 10+00, SKEWED 0°.

SECTION BEGINS AT STA. 8+50

LOCATION MAP



Brian K. Conwell
DATE: MARCH 7/2006
EXPIRES 11/30/06

APPROVED: *[Signature]* 20_06
LOCAL AGENCY OFFICIAL

APPROVED: *[Signature]* 20_06
LOCAL AGENCY OFFICIAL

PASSED: *[Signature]* 4-18 20_06
DISTRICT ENGINEER OF LOCAL ROADS & STREETS

APPROVED: *[Signature]* 4-18 20_06
FOR BIDDING
DISTRICT ENGINEER

STATE OF ILLINOIS
DEPARTMENT OF TRANSPORTATION

PREPARED BY
**WILLETT
HOFMANN &
ASSOCIATES, INC.**
CONSULTING ENGINEERS
Land Surveying - Transportation - Structural
Environmental - Architecture
809 East Second Street
Dixon, Illinois 61021
Phone: 815-284-3381