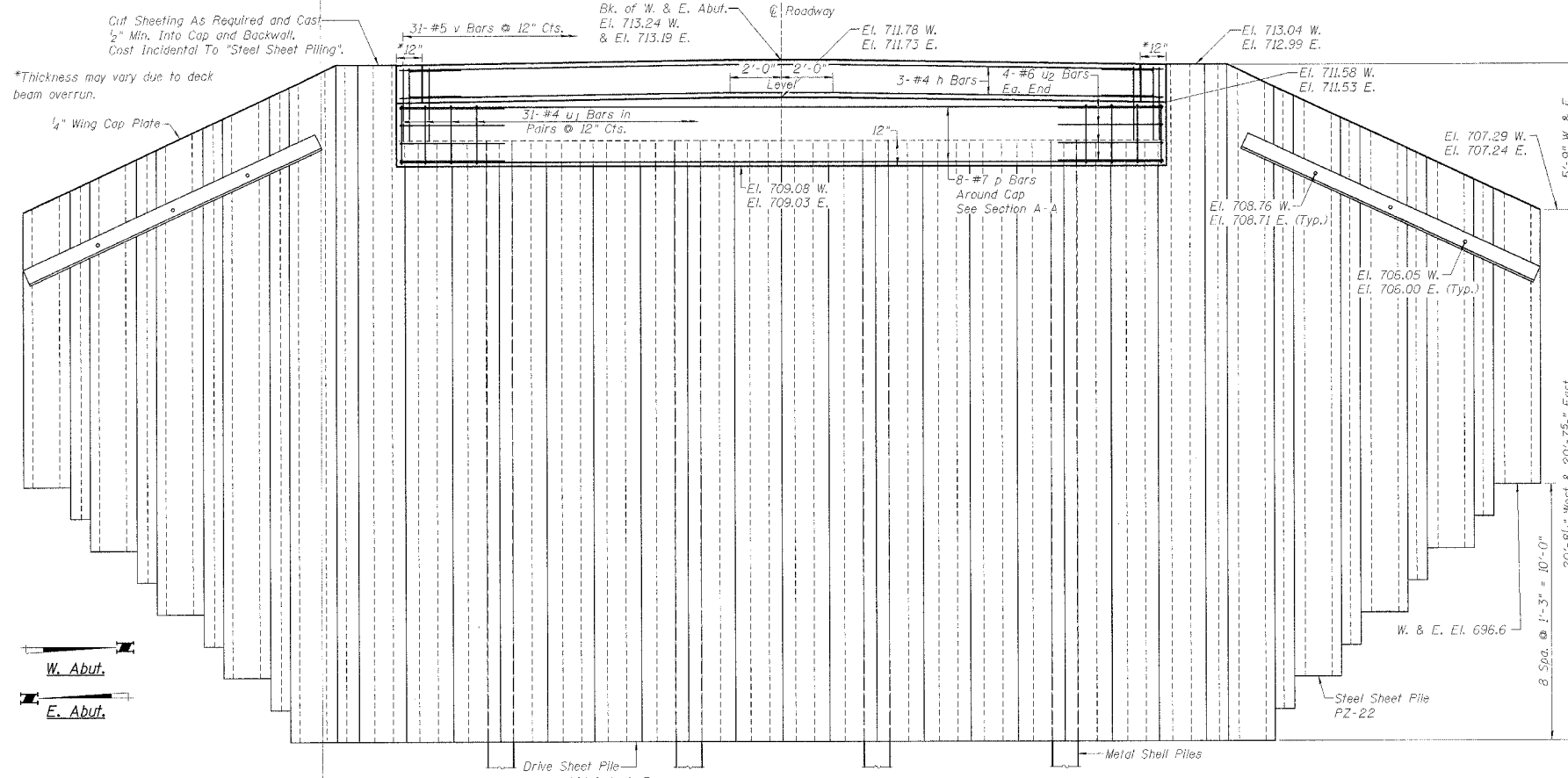
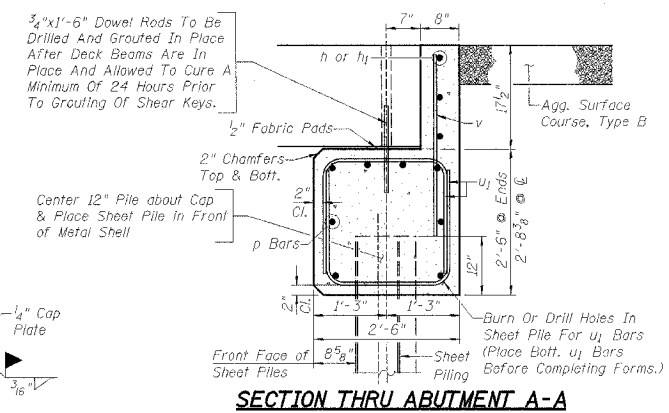


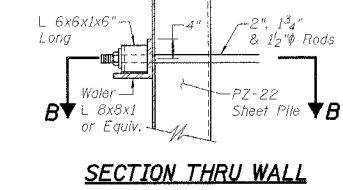
PROJECT	SECTION	COUNTY	SHEET	TOTAL SHEETS
59	01-2213-00-BR 01-0915-00-BR	Ogle Winnebago	9	5
FED. ROAD DIST. NO. 7	ILLINOIS	FED. AID PROJECT:	BR05-14H(62)	



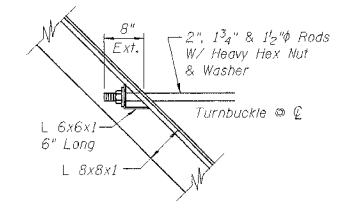
**ELEVATION VIEW**



**SECTION THRU ABUTMENT A-A**



**SECTION THRU WALL**



**SECTION B-B**

**PILE DATA (WEST & EAST ABUTS.)**

Type.....	12" Metal Shell
Capacity.....	45 Ton
No. Required.....	West - 4
	East 3 + 1 Test pile
Est. Length.....	35' West Abut.
	42' East Abut.

**BILL OF MATERIAL - W. & E. ABUTMENTS**

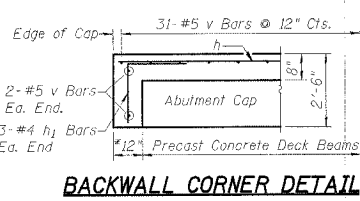
Bar	No.	Size	Length	Shape
h	6	#4	29'-8"	—
h <sub>1</sub>	12	#4	4'-0"	—
p	16	#7	29'-8"	—
u <sub>1</sub>	124	#4	6'-6"	□
u <sub>2</sub>	16	#6	10'-1"	□
v	70	#5	3'-6"	—
Concrete Structures		Cu. Yd.	16.8	
Reinforcement Bars		Pound	4320	
Permanent Steel Sheet Piling		Sq. Ft.	2896	
Hardware		Pound	2540	
Furnishing & Erecting Structural Steel		Pound	5003	
Structure Excavation		Cu. Yd.	120	
Porous Granular Embankment		Cu. Yd.	115	
Test Pile - Metal Shell		Each	1	
Furnishing Metal Shell Piles-12"		Foot	266	
Driving & Filling Shells		Foot	266	

**NOTES:**  
All Hardware Shall Be Hot Dipped Galvanized In Accordance With A.A.S.H.T.O. M-232.

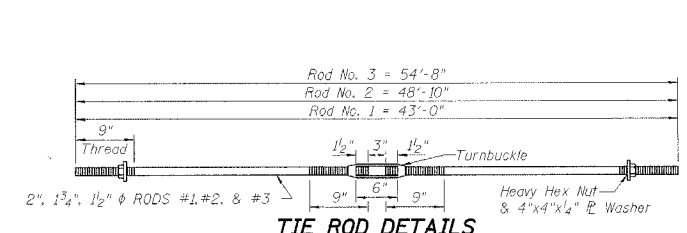
Cost Of Fabricating Corner Detail, 3/8" Plate & 7/8" Bolt Shall Be Included In The Cost Per Sq. Ft. For Permanent Steel Sheet Piling.

L 8"x8"x 1" Water, 1/4" Cap Plate & Connection Angles Shall Be Included For Payment As Furnishing & Erecting Structural Steel.

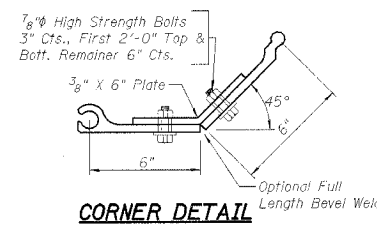
**WEST & EAST ABUTMENT DETAILS**  
SECTION 01-2213-00-BR  
SECTION 01-0915-00-BR  
EDSON ROAD OVER DRAINAGE DITCH  
SCOTT/ROCKFORD ROAD DISTRICTS  
OGLE/WINNEBAGO COUNTY  
WHA # 1164001



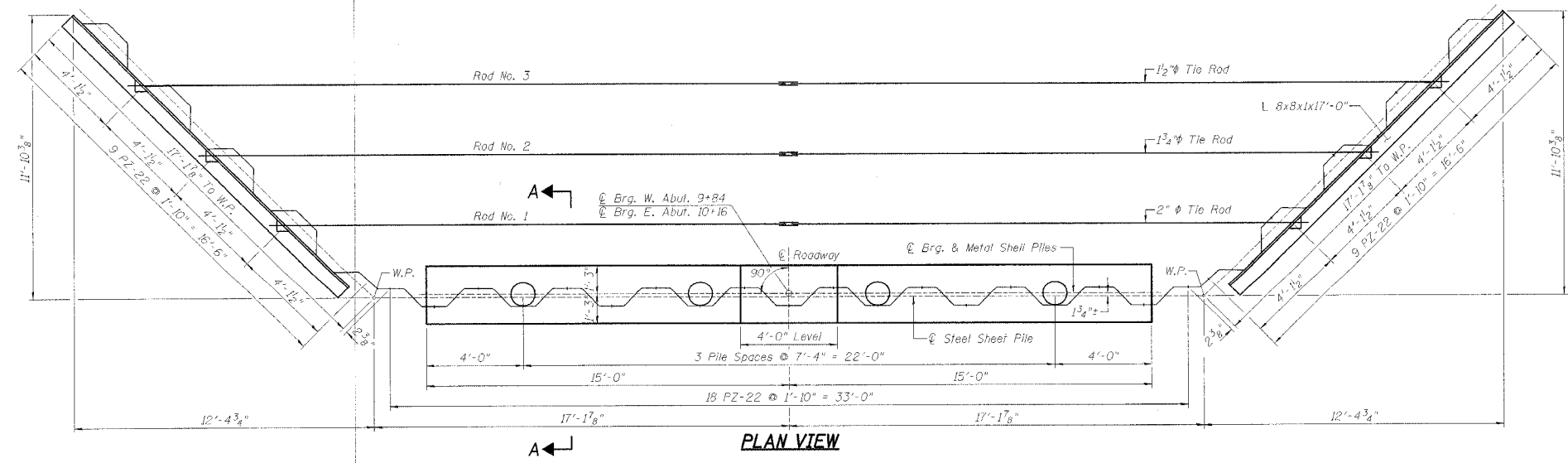
**BACKWALL CORNER DETAIL**



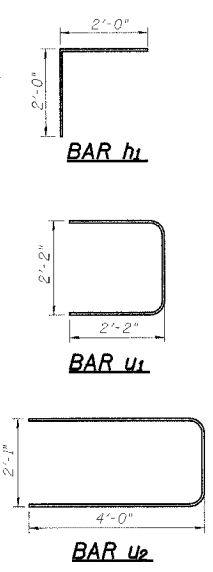
**TIE ROD DETAILS**



**CORNER DETAIL**



**PLAN VIEW**



**BAR h1**

**BAR u1**

**BAR u2**