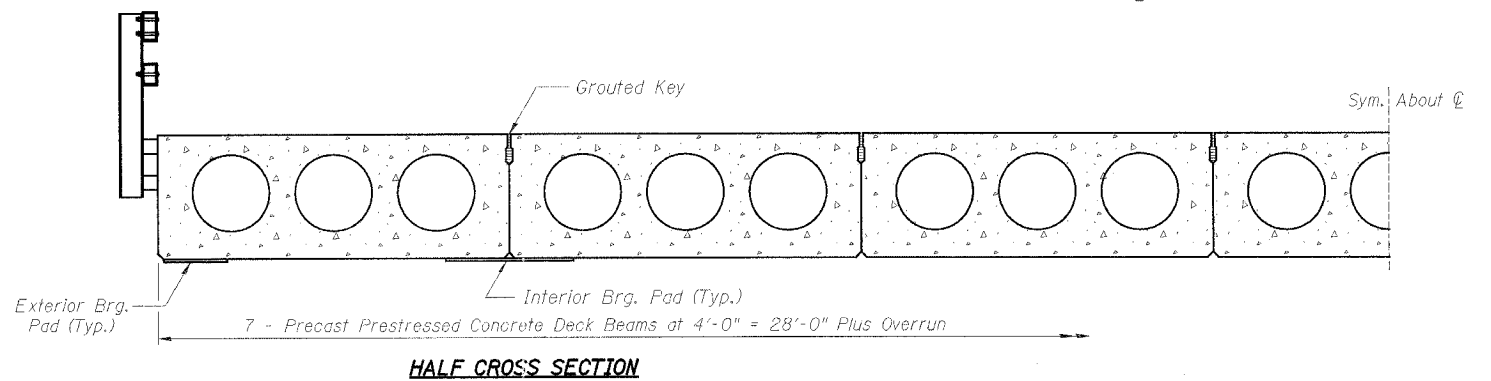
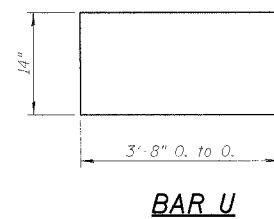
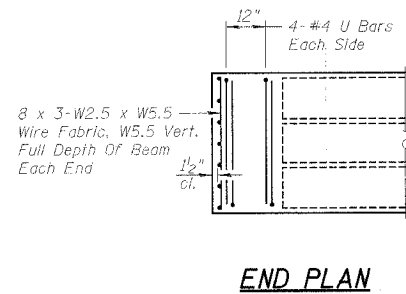
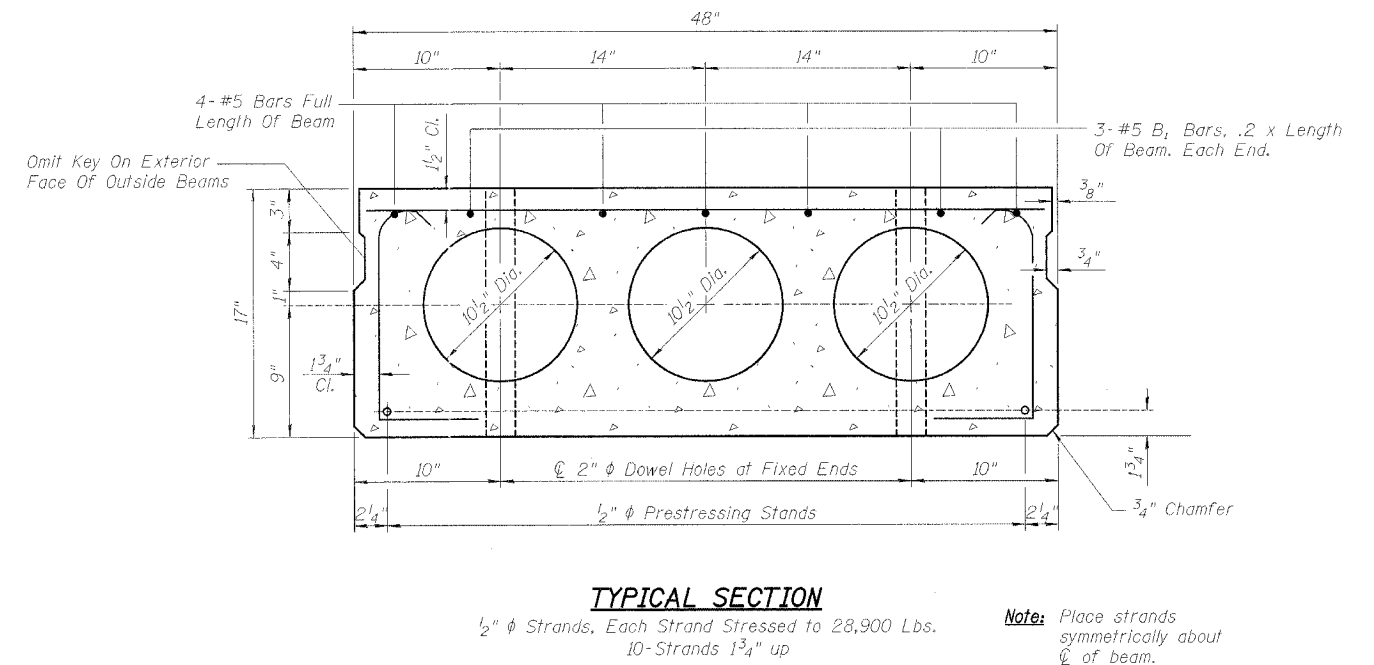
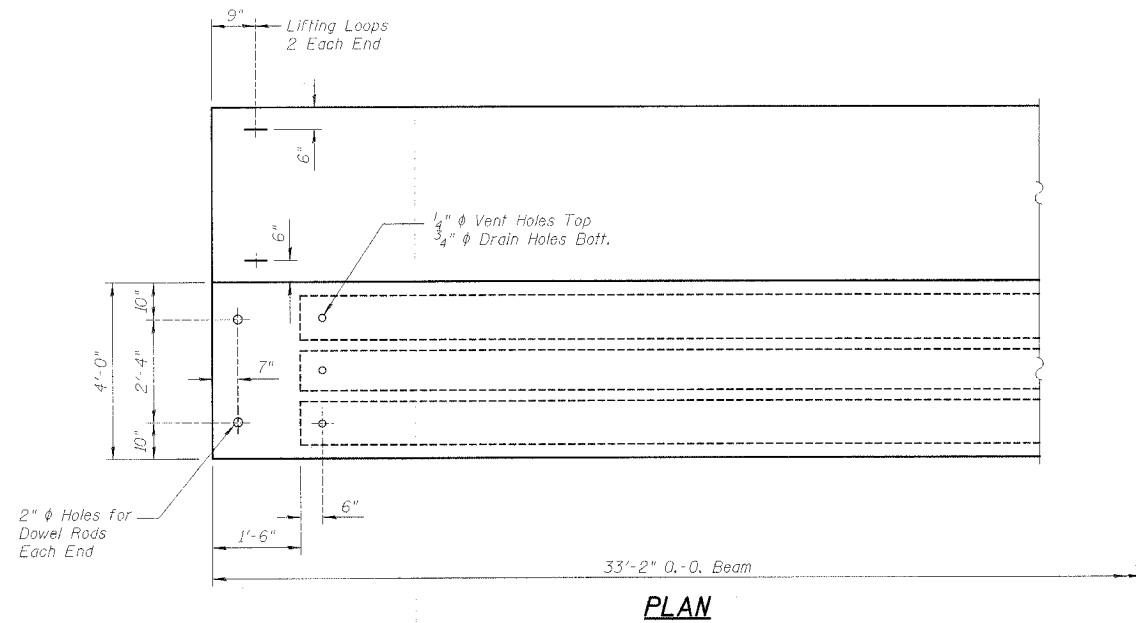


PROJECT	SECTION	COUNTY	SHEETS	SHEET
59	01-22113-00-BR 01-09115-00-BR	Ogle Winnebago	9	6
FED. ROAD DIST. NO. 7	IL LINKS	FED. AID PROJECT	BR05-141(62)	

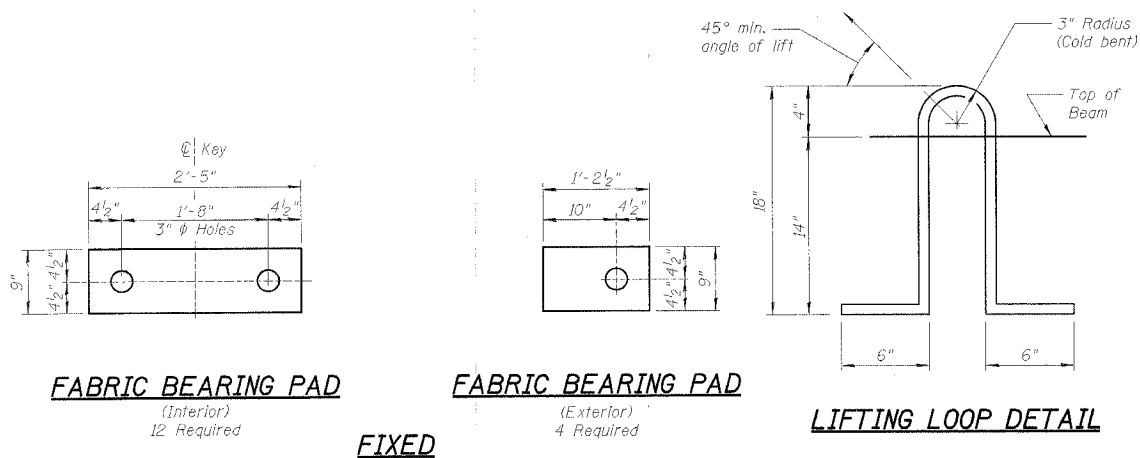


NOTES

- 1.) Prestressing steel shall be uncoated high strength, stress-relieved 7-wire strand, Grade 270.
- 2.) The nominal diameter shall be 1/2" and the nominal cross-sectional area shall be 0.153 sq. in.
- 3.) Lifting loops shall be 2 - 1/2" ϕ - 270 ksi strands, as shown.
- 4.) Reinforcement bars shall conform to the requirements of AASHTO M-31, M-42, or M-53 Grade 60.
- 5.) The bearing seat surfaces shall be adjusted by shimming to assure firm and even bearing. Two 1/8" fabric adjusting shims of the dimensions of the Exterior Bearing Pad shall be provided for each bearing.
- 6.) Keyway surfaces shall be cleaned to remove form oil or other bond breaking material prior to shipment of the beams. Cleaning shall be done by sandblasting the keyway areas between top of the beam and the bottom edge of the key.
- 7.) A Calcium Nitrite Corrosion Inhibitor, as covered in the Special Provisions, shall be used in the concrete for precast prestressed concrete deck beams.
- 8.) Required Release Strength, f'ci, shall be 4000 p.s.i.
- 9.) An equal substitution of the low-relaxation strands for the stress-relieved strands will be permitted.

BILL OF MATERIAL

Precast Prestressed Concrete Deck Beams-17"	Sq. Ft.	929
---	---------	-----



DECK BEAM DETAILS
SECTION 01-22113-00-BR
SECTION 01-09115-00-BR
EDSON ROAD OVER DRAINAGE DITCH
SCOTT/ROCKFORD ROAD DISTRICTS
OGLE/WINNEBAGO COUNTY
WHA # 1164D01