

# SUMMARY OF QUANTITIES

SECTION	COUNTY	TOTAL SHEETS	SHEET NO.
303 03-00520-00-WR	WINNEBAGO	254	3
STA. TO STA.			
FED. ROAD DIST. NO.	ILLINOIS	FED. AID PROJECT	

CODE NUMBER	PAY ITEMS	UNIT	TOTAL QUANTITY	URBAN 80% FED 20% CITY		Y030-1E HWY. LIGHTING	Y031-1F SIGNALS	Y080 TRAINING
				I000 BIT. CONCRETE	J000 P. C. CONCRETE			
20100110	TREE REMOVAL (6 TO 15 UNITS DIAMETER)	UNIT	143		143			
20100210	TREE REMOVAL (OVER 15 UNITS DIAMETER)	UNIT	216		216			
20100500	TREE REMOVAL, ACRES	ACRES	0.48		0.48			
20200100	EARTH EXCAVATION	C. Y.	42,759		42,759			
20800150	TRENCH BACKFILL	C. Y.	1,924.62		1,924.62			
21101625	TOPSOIL FURNISH AND PLACE, 6"	S. Y.	40,324		40,324			
25100115	MULCH, METHOD 2	ACRE	25.00		25.00			
<del>25200100</del>	<del>SODDING</del>	<del>S. Y.</del>	<del>40,324</del>		<del>40,324</del>			
<del>25200200</del>	<del>SUPPLEMENTAL WATERING</del>	<del>UNIT</del>	<del>2,016</del>		<del>2,016</del>			
28000250	TEMPORARY EROSION CONTROL SEEDING	POUND	2,250		2,250			
28000300	TEMPORARY DITCH CHECKS	EACH	48		48			
28000400	PERIMETER EROSION BARRIER	FT.	7,179		7,179			
28000500	INLET AND PIPE PROTECTION	EACH	135		135			
31100100	SUB-BASE GRANULAR MATERIAL, TYPE A	TON	68,978.2		68,978.2			
31200100	STABILIZED SUB-BASE 4"	S. Y.	86,428.6		86,428.6			
35101400	AGGREGATE BASE COURSE, TYPE B	TON	5,475		5,475			
40200800	AGGREGATE SURFACE COURSE, TYPE B	TON	20		20			
40600200	BITUMINOUS MATERIALS (PRIME COAT)	TON	23.5	7.1	16.4			
40600300	AGGREGATE (PRIME COAT)	TON	0.4		0.4			
42000401	PORTLAND CEMENT CONCRETE PAVEMENT 9" (JOINTED)	S. Y.	85,262.1		85,262.1			
42001300	PROTECTIVE COAT	S. Y.	101,210		101,210			

Deleted  
6-9-06

\*SPECIALTY ITEMS

# SUMMARY OF QUANTITIES

SECTION	COUNTY	TOTAL SHEETS	SHEET NO.
03-00520-00-WR	WINNEBAGO	254	4
STA. TO STA.			
FED. ROAD DIST. NO.	ILLINOIS FED. AID PROJECT		

CODE NUMBER	PAY ITEMS	UNIT	TOTAL QUANTITY	URBAN 80% FED 20% CITY		Y030-1E HWY. LIGHTING	Y031-1F SIGNALS	Y080 TRAINING
				I000 BIT. CONCRETE	J000 P.C. CONCRETE			
42300300	PORTLAND CEMENT CONCRETE DRIVEWAY PAVEMENT, 7 INCH	S. Y.	723.2		723.2			
42400200	PORTLAND CEMENT CONCRETE SIDEWALK 5 INCH	S. F.	2,578		2,578			
Added 6-9-06 42400800	DETECTABLE WARNINGS	S. F.	889		889			
44000009	BITUMINOUS SURFACE REMOVAL 3"	S. Y.	29,208	29,208				
44000100	PAVEMENT REMOVAL	S. Y.	77,703		77,703			
44000200	DRIVEWAY PAVEMENT REMOVAL	S. Y.	154		154			
44000500	COMBINATION CURB AND GUTTER REMOVAL	FT.	27,188		27,188			
44000600	SIDEWALK REMOVAL	S. F.	1,818		1,818			
44001700	COMBINATION CONCRETE CURB AND GUTTER REMOVAL AND REPLACEMENT	FT.	491		491			
44002020	CONCRETE MEDIAN SURFACE REMOVAL	S. F.	58,324		58,324			
44004250	PAVED SHOULDER REMOVAL	S. Y.	9,537		9,537			
44200962	CLASS B PATCHES, TYPE III, 9 INCH	S. Y.	175	175				
44200964	CLASS B PATCHES, TYPE IV, 9 INCH	S. Y.	113	113				
44213200	SAW CUTS	FT.	2,050	870	1,180			
44300200	STRIP REFLECTIVE CRACK CONTROL TREATMENT	FT.	724	724				
48100100	AGGREGATE SHOULDERS, TYPE A	TON	5.3		5.3			
48202400	BITUMINOUS SHOULDERS SUPERPAVE 6"	S. Y.	253.9		253.9			
50104400	CONCRETE HEADWALL REMOVAL	EACH	1		1			
50105220	PIPE CULVERT REMOVAL	FT.	261		261			
542A0235	PIPE CULVERTS, CLASS A, TYPE 1 30"	FT.	23		23			
54207165	PIPE CULVERTS, TYPE 1, REINFORCED CONCRETE-ELLIPTICAL, EQUIVALENT ROUND-SIZE 30"	FT.	18		18			

\* SPECIALTY ITEMS

SECTION	COUNTY	TOTAL SHEETS	SHEET NO.
303 03-00520-00-WR	WINNEBAGO	254	7
STA. TO STA.			
FED. ROAD DIST. NO.	ILLINOIS	FED. AID PROJECT	

# SUMMARY OF QUANTITIES

CODE NUMBER	PAY ITEMS	UNIT	TOTAL QUANTITY	URBAN 80% FED 20% CITY		Y030-1E HWY. LIGHTING	Y031-1F SIGNALS	Y080 TRAINING
				I000 BIT. CONCRETE	J000 P.C. CONCRETE			
60500060	REMOVING INLETS	EACH	46		46			
60600095	CLASS SI CONCRETE (OUTLET)	C.Y.	14.14		14.14			
60603500	COMBINATION CONCRETE CURB & GUTTER, TYPE B-6.06	FT.	2,398.6		2,398.6			
60604400	COMBINATION CONCRETE CURB & GUTTER, TYPE B-6.18	FT.	3,420.0		3,420.0			
60605000	COMBINATION CONCRETE CURB & GUTTER, TYPE B-6.24	FT.	20,569.4		20,569.4			
60608600	COMBINATION CONCRETE CURB & GUTTER, TYPE M-6.06	FT.	358.2		358.2			
60610400	COMBINATION CONCRETE CURB & GUTTER, TYPE M-6.24	FT.	525.8		525.8			
60618300	CONCRETE MEDIAN SURFACE, 4 INCH	S.F.	11,785		11,785			
60619100	CONCRETE MEDIAN, TYPE SB (SPECIAL)	S.F.	36,579.4		36,579.4			
67000400	ENGINEER'S FIELD OFFICE	Cal mo	18		18			
67100100	MOBILIZATION	L. SUM	1		1			
70103700	TRAFFIC CONTROL COMPLETE	L. SUM	1		1			
72300100	INSTALL EXISTING SIGN PANEL	S.F.	27				27	
* 78000100	THERMOPLASTIC PAVEMENT MARKING - LETTERS AND SYMBOLS	S.F.	584.0		584.0			
* 78000200	THERMOPLASTIC PAVEMENT MARKING - LINE 4"	FT.	3,402		3,402			
* 78000400	THERMOPLASTIC PAVEMENT MARKING - LINE 6"	FT.	459		459			
* 78000500	THERMOPLASTIC PAVEMENT MARKING - LINE 8"	FT.	2,400		2,400			
* 78000600	THERMOPLASTIC PAVEMENT MARKING - LINE 12"	FT.	50		50			
* 78000650	THERMOPLASTIC PAVEMENT MARKING - LINE 24"	FT.	285		285			
* 78001100	PAINT PAVEMENT MARKING - LETTERS AND SYMBOLS	S.F.	2,371.2		2,371.2			
* 78001110	PAINT PAVEMENT MARKING, LINE 4"	FT.	4,988.7		4,988.7			
* 78001140	PAINT PAVEMENT MARKING, LINE 8"	FT.	17,732.3		17,732.3			

Revised  
6.9.06

\* SPECIALTY ITEMS

# SUMMARY OF QUANTITIES

SECTION	COUNTY	TOTAL SHEETS	SHEET NO.
303 03-00520-00-WR	WINNEBAGO	254	8
STA. TO STA.		FED. ROAD DIST. NO. ILLINOIS FED. AID PROJECT	

CODE NUMBER	PAY ITEMS	UNIT	TOTAL QUANTITY	URBAN 80% FED 20% CITY				
				I000 BIT. CONCRETE	J000 P.C. CONCRETE	Y030-1E HWY. LIGHTING	Y031-1F SIGNALS	Y080 TRAINING
* 78001150	PAINT PAVEMENT MARKING, LINE 12"	FT.	2,139.3		2,139.3			
* 78001180	PAINT PAVEMENT MARKING, LINE 24"	FT.	1,074.0		1,074.0			
* 78100100	RAISED REFLECTIVE PAVEMENT MARKER	EACH	245		245			
<del>* 80400100</del>	<del>ELECTRIC SERVICE INSTALLATION</del>	<del>EACH</del>	<del>2</del>			<del>2</del>		
* 80500200	SERVICE INSTALLATION, TYPE B	EACH	3				3	
* 81012500	CONDUIT IN TRENCH, 1-1/2" DIA., PVC	FT.	111				111	
<del>* 81012600</del>	<del>CONDUIT IN TRENCH, 2" DIA., PVC</del>	<del>FT.</del>	<del>6,984</del>			<del>6,817</del>	6,984	
* 81012700	CONDUIT IN TRENCH, 2-1/2" DIA., PVC	FT.	452				452	
* 81012800	CONDUIT IN TRENCH, 3" DIA., PVC	FT.	293				293	
* 81013000	CONDUIT IN TRENCH, 4" DIA., PVC	FT.	351				351	
* 81013100	CONDUIT IN TRENCH, 5" DIA., PVC	FT.	331				331	
* 81013200	CONDUIT IN TRENCH, 6" DIA., PVC	FOOT	50				50	
<del>* 81400100</del>	<del>HANDHOLE</del>	<del>EACH</del>	<del>34</del>			<del>1</del>	34	
* 81400300	DOUBLE HANDHOLE	EACH	3				3	
<del>* 81500200</del>	<del>TRENCH AND BACKFILL FOR ELECTRICAL WORK</del>	<del>FT.</del>	<del>8,572</del>			<del>1,100</del>	8,572	
* 81702110	ELECTRIC CABLE IN CONDUIT, 600V (XLP-TYPE USE) 1/C NO. 10	FT.	6,442				6,442	
* 82103250	LUMINAIRE, SODIUM VAPOR, HORIZONTAL MOUNT, PHOTOCELL CONTROL, 250 WATT	EACH	15				15	
<del>* 83016400</del>	<del>LIGHT POLE, ALUMINUM, TRANSFORMER BASE, 40 FT M.H., 10 FT DAVIT ARM</del>	<del>EACH</del>	<del>32</del>			<del>32</del>		
<del>* 83600355</del>	<del>LIGHT POLE FOUNDATION METAL, 15" BOLT CIRCLE, 8" X 6"</del>	<del>EACH</del>	<del>32</del>			<del>32</del>		
* 85700305	FULL-ACTUATED CONTROLLER AND TYPE V CABINET, SPECIAL	EACH	3				3	

Deleted 6-9-06

Revised 6-9-06

Revised 6-9-06

Revised 6-9-06

Deleted 6-9-06

Deleted 6-9-06

\* SPECIALTY ITEMS

# SUMMARY OF QUANTITIES

DATE	SECTION	COUNTY	TOTAL SHEETS	SHEET NO.
303	03-00520-00-WR	WINNEBAGO	254	10
STA.		TO STA.		
FED. ROAD DIST. NO.		ILLINOIS	FED. AID PROJECT	

CODE NUMBER	PAY ITEMS	UNIT	TOTAL QUANTITY	URBAN 80% FED 20% CITY				
				I000 BIT. CONCRETE	J000 P. C. CONCRETE	Y030-1E HWY. LIGHTING	Y031-1F SIGNALS	Y080 TRAINING
*88800100	PEDESTRIAN PUSH-BUTTON	EACH	29				29	
*89000200	TEMPORARY TRAFFIC SIGNAL INSTALLATION	L. SUM	1				1	
*89502300	REMOVE ELECTRIC CABLE FROM CONDUIT	FT.	830				830	
*89502375	REMOVE EXISTING TRAFFIC SIGNAL EQUIPMENT	EACH	5				5	
XX000968	INLETS, TYPE 700	EACH	27		27			
*XX002191	BARE COPPER WIRE, 1/C NO. 8	FT.	8,410				8,410	
*X0325151	REMOVE EXISTING LIGHT POLE	EACH	1				1	
<del>*XX004270</del>	<del>ELECTRIC CABLE IN CONDUIT, 600V 1/C NO. 6 THHN/THWN</del>	<del>FT.</del>	<del>28,000</del>			<del>28,000</del>		
*X0320872	VIDEO VEHICLE DETECTION SYSTEM	EACH	3				3	
*X0320873	VIDEO VEHICLE DETECTOR	EACH	3				3	
X0322034	STORM SEWER (WATER MAIN REQUIREMENTS) 15"	FT.	12		12			
X0322125	STORM SEWER (WATER MAIN REQUIREMENTS) 24"	FT.	200		200			
X0322127	STORM SEWER (WATER MAIN REQUIREMENTS) 30"	FT.	77		77			
*X0322283	VIDEO SURVEILLANCE SYSTEM, COMPLETE	EACH	2				2	
*X0324085	EMERGENCY VEHICLE PRIORITY SYSTEM, LINE SENSOR CABLE, NO. 20 3/C	FT.	3,353				3,353	
X0930400	STORM SEWER WATER MAIN 12"	FT.	1,354		1,354			
X0930500	STORM SEWER WATER MAIN 18"	FT.	597		597			
X4066436	BITUMINOUS CONCRETE SURFACE COURSE, SUPERPAVE, MIX "E", N70	TON	2,455	2,455				
X4066412	BITUMINOUS CONCRETE SURFACE COURSE, SUPERPAVE, MIX "C", N30	TON	1,131		1,131			
X4066616	BITUMINOUS CONCRETE BINDER COURSE, SUPERPAVE, IL-19.0, N70	TON	2,455	2,455				
*X8730027	ELECTRIC CABLE IN CONDUIT, GROUNDING, NO. 6 1C	FOOT	2,241				2,241	
*X8801310	SIGNAL HEAD, POLYCARBONATE, LED, 1-FACE, 3-SECTION, MAST ARM MOUNTED	EACH	30				30	

Deleted  
6.9.06

\*SPECIALTY ITEMS

SECTION	COUNTY	TOTAL SHEETS	SHEET NO.
03-00520-00-WR	WINNEBAGO	254	11
STA.		TO STA.	
FED. ROAD DIST. NO.		ILLINOIS	FED. AID PROJECT

# SUMMARY OF QUANTITIES

CODE NUMBER	PAY ITEMS	UNIT	TOTAL QUANTITY	URBAN 80% FED 20% CITY				
				I000 BIT. CONCRETE	J000 P.C. CONCRETE	Y030-1E HWY. LIGHTING	Y031-1F SIGNALS	Y080 TRAINING
*X8801395	SIGNAL HEAD, POLYCARBONATE, LED, 1-FACE, 5-SECTION, BRACKET MOUNTED	EACH	27				27	
*X8801400	SIGNAL HEAD, POLYCARBONATE, LED, 1-FACE, 5-SECTION, MAST ARM MOUNTED	EACH	14				14	
*X8801447	SIGNAL HEAD, POLYCARBONATE, LED, 2-FACE, 5-SECTION, BRACKET MOUNTED	EACH	4				4	
*X8810395	PEDESTRIAN SIGNAL HEAD, POLYCARBONATE, LED, 1-FACE, BRACKET MOUNTED	EACH	12				12	
*X8810495	PEDESTRIAN SIGNAL HEAD, POLYCARBONATE, LED, 2-FACE, BRACKET MOUNTED	EACH	7				7	
*X8810630	PEDESTRIAN SIGNAL HEAD, LED, 3-FACE, BRACKET MOUNTED	EACH	2				2	
Z0017202	DOWEL BARS 1 1/2"	EACH	1,058		1,058			
Z0065745	SLOTTED DRAIN 12" WITH 2 1/2" SLOT	FT.	100		100			
Z0076600	TRAINEE	HRS.	1,000					1,000
XX006576	DOUBLE INLETS, TYPE 700	EACH	1		1			
*XX006575	FIBER OPTIC CABLE IN CONDUIT, 48 FIBER, SINGLE MODE AND 24 FIBER MULTIMODE	FT.	8,410				8,410	
<del>Deleted 6-9-06</del> *XX006577	<del>LUMINAIRE, PHASE START, METAL HALIDE, 400 WATT</del>	<del>EACH</del>	<del>32</del>				<del>32</del>	
<del>Deleted 6-9-06</del> *XX006578	<del>LUMINAIRE, PHASE START, METAL HALIDE, 150 WATT</del>	<del>EACH</del>	<del>32</del>				<del>32</del>	

\*SPECIALTY ITEMS

E.A. RTE.	SECTION	COUNTY	TOTAL SHEETS	SHEET NO.
303	03-00520-00-WR	WINNEBAGO	254	27
STA.		TO STA.		
FED. ROAD DIST. NO.		ILLINOIS FED. AID PROJECT		

# SCHEDULE OF QUANTITIES

21101625 TOPSOIL FURNISH AND PLACE, 6" (CONT)	S. Y.
RT. STA. 16+72-20+91	278
LT. STA. 16+99-22+23	1,406
FOREST VIEW	
LT. STA. 504+80-506+52	119
RT. STA. 504+80-506+47	145
EASTROCK	
RT. STA. 601+49-602+52	112
RT. STA. 602+76-603+88	168
LT. STA. 602+72-603+80	110
<b>TOTAL</b>	<b>40,324</b>

25100115 MULCH, METHOD 2	ACRE
ENTIRE PROJECT (8.33 AC.)	25.00
<b>TOTAL</b>	<b>25.00</b>

<del>25200100 SODDING</del> Deleted 6-9-06	S. Y.
RT. STA. 201+17-206+32	506
LT. STA. 201+17-201+95	36
LT. STA. 202+14-203+65	90
LT. STA. 204+16-206+54	176
RT. STA. 206+85-215+94	1,993
LT. STA. 206+84-210+68	287
LT. STA. 211+00-221+31	131
RT. STA. 216+74-226+00	3,036
LT. STA. 221+61-224+83	267
LT. STA. 225+20-226+38	178
LT. STA. 226+70-228+10	182
RT. STA. 227+15-235+56	1,617
LT. STA. 228+33-228+66	62
LT. STA. 228+83-229+52	167
LT. STA. 229+82-230+55	55
LT. STA. 230+67-232+63	244
LT. STA. 232+95-237+87	1,070
RT. STA. 235+50-237+71	509
RT. STA. 237+91-238+05	23
RT. STA. 238+31-244+14	957
LT. STA. 238+15-244+37	2,311
LT. STA. 244+68-251+19	2,533
RT. STA. 244+98-251+10	1,488
LT. STA. 251+49-256+05	1,034
RT. STA. 251+35-255+87	835
LT. STA. 256+34-262+02	1,787
RT. STA. 256+47-261+84	567
RT. STA. 262+77-269+47	1,640
LT. STA. 262+69-269+46	1,650
RT. STA. 269+77-279+36	1,951
LT. STA. 269+77-279+05	2,133
LT. STA. 280+75-290+34	3,056
RT. STA. 280+96-287+02	1,645
RT. STA. 288+53-289+17	139
MULFORD	
RT. STA. 8+00-15+19	1,386
LT. STA. 9+11-15+45	2,245
RT. STA. 16+72-20+91	278
LT. STA. 16+99-22+23	1,406
FOREST VIEW	
LT. STA. 504+80-506+52	119
RT. STA. 504+80-506+47	145

<del>25200100 SODDING (CONT)</del> Deleted 6-9-06	S. Y.
EASTROCK	
RT. STA. 601+49-602+52	112
RT. STA. 602+76-603+88	168
LT. STA. 602+72-603+80	110
<b>TOTAL</b>	<b>40,324</b>

<del>25200200 SUPPLEMENTAL WATERING</del> Deleted 6-9-06	UNIT
ENTIRE PROJECT	2,016
<b>TOTAL</b>	<b>2,016</b>

28000250 TEMPORARY EROSION CONTROL SEEDING	POUND
ENTIRE PROJECT (8.33 AC.)	2,250
<b>TOTAL</b>	<b>2,250</b>

28000300 TEMPORARY DITCH CHECKS	EACH
HARRISON AVENUE	
RT. STA. 217+60	1
RT. STA. 218+50	1
RT. STA. 219+50	1
LT. STA. 220+00	1
RT. STA. 220+50	1
RT. STA. 221+50	1
LT. STA. 234+85	1
RT. STA. 263+00	1
RT. STA. 264+00	1
RT. STA. 265+00	1
RT. STA. 267+00	1
RT. STA. 268+00	1
LT. STA. 270+20	1
LT. STA. 270+60	1
RT. STA. 271+00	1
RT. STA. 272+00	1
RT. STA. 273+00	1
RT. STA. 274+00	1
RT. STA. 274+50	1
RT. STA. 275+00	1
LT. STA. 281+95	1
LT. STA. 282+60	1
RT. STA. 283+00	1
LT. STA. 283+30	1
RT. STA. 283+75	1
LT. STA. 283+95	1
RT. STA. 284+50	1
LT. STA. 284+60	1
LT. STA. 285+30	1
LT. STA. 285+95	1
LT. STA. 286+30	1
LT. STA. 286+60	1
LT. STA. 286+95	1
LT. STA. 287+30	1
LT. STA. 287+60	1
LT. STA. 287+95	1
LT. STA. 288+30	1
LT. STA. 288+60	1
LT. STA. 288+95	1
LT. STA. 289+30	1
LT. STA. 289+60	1

28000300 TEMPORARY DITCH CHECKS (CONT)	EACH
MULFORD ROAD	
LT. STA. 10+00	1
LT. STA. 10+75	1
LT. STA. 11+25	1
LT. STA. 11+75	1
LT. STA. 12+25	1
LT. STA. 13+00	1
LT. STA. 14+35	1
<b>TOTAL</b>	<b>48</b>

28000400 PERIMETER EROSION BARRIER	FT.
HARRISON AVENUE	
RT. STA. 201+18-202+50	132
LT. STA. 207+65-208+95	130
LT. STA. 211+00-211+12	32
RT. STA. 211+75-214+50	275
RT. STA. 214+20-215+92	172
LT. STA. 214+50-220+00	550
RT. STA. 215+95-216+04	27
RT. STA. 216+64-217+42	113
RT. STA. 227+15-235+54	842
RT. STA. 227+29-228+00	71
RT. STA. 235+00-235+34	34
RT. STA. 235+53-236+00	53
RT. STA. 235+89-237+68	179
LT. STA. 234+15-234+70	55
RT. STA. 237+20-237+65	56
RT. STA. 238+32-238+75	43
RT. STA. 238+50-244+00	550
LT. STA. 243+25-244+50	124
RT. STA. 243+60-243+97	37
RT. STA. 245+00-251+10	615
RT. STA. 251+36-251+48	17
RT. STA. 251+36-255+87	456
LT. STA. 253+00-255+80	280
RT. STA. 256+48-259+25	285
RT. STA. 260+90-261+68	78
RT. STA. 261+20-261+62	42
RT. STA. 275+30-279+08	396
RT. STA. 280+96-282+40	147
RT. STA. 287+56-287+04	61
FOREST VIEW ROAD	
LT. STA. 504+78-505+50	80
LT. STA. 504+78-505+10	32
LT. STA. 508+65-510+25	160
EAST ROCK DRIVE	
RT. STA. 601+48-602+50	109
LT. STA. 602+72-603+90	118
LT. STA. 602+75-603+25	50
RT. STA. 602+76-603+90	118
MULFORD ROAD	
RT. STA. 8+99-15+00	660
<b>TOTAL</b>	<b>7,179</b>

28000500 INLET AND PIPE PROTECTION	EACH
HARRISON AVENUE	
STA. 201+80 47.60' LT.	1
STA. 202+24 47.58' LT.	1
STA. 203+29 47.59' LT.	1

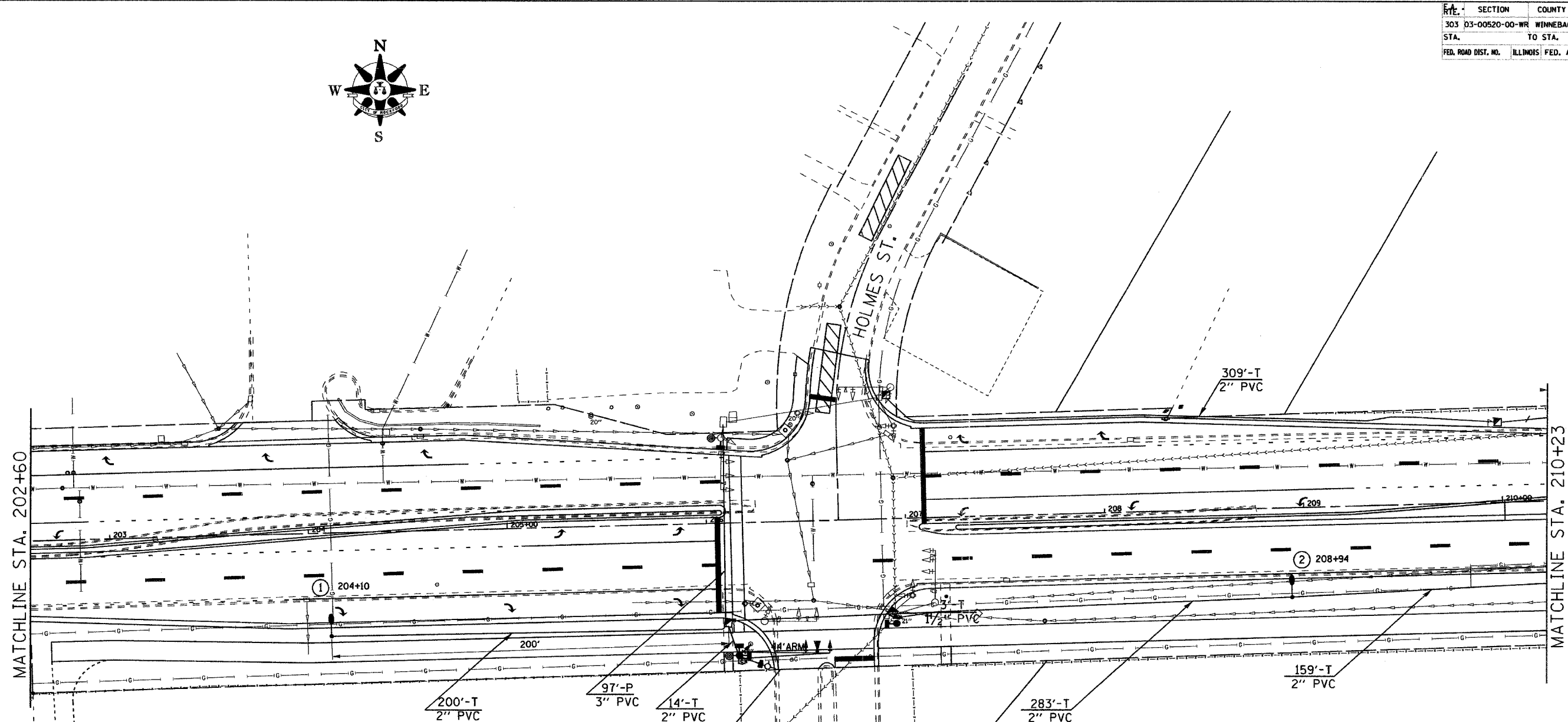
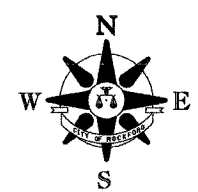
E.A. RTE.	SECTION	COUNTY	TOTAL SHEETS	SHEET NO.
303	03-00520-00-WR	WINNEBAGO	254	36
STA.		TO STA.		
FED. ROAD DIST. NO.	ILLINOIS	FED. AID PROJECT		

# SCHEDULE OF QUANTITIES

<p>60610400 COMBINATION CONCRETE CURB &amp; GUTTER, TYPE M-6.24 FT.</p> <p>S. W. ISLAND FOREST VIEW 68.2                  S. E. ISLAND FOREST VIEW 54.2                  S. W. ISLAND STOWMARKET 28.5                  S. E. ISLAND STOWMARKET 33.1                  N. W. ISLAND STOWMARKET 31.3                  N. E. ISLAND STOWMARKET 46.9                  S. W. ISLAND MULFORD 51.2                  S. E. ISLAND MULFORD 81.5                  N. W. ISLAND MULFORD 79.1                  N. E. ISLAND MULFORD 51.8</p> <p style="text-align: right;">TOTAL 525.8</p>	<p>70103700 TRAFFIC CONTROL COMPLETE L. SUM</p> <p>ENTIRE PROJECT 1</p> <p style="text-align: right;">TOTAL 1</p>	<p>78000200 THERMOPLASTIC PAVEMENT MARKING - LINE 4" (CONT) FT.</p> <p>YELLOW - DOUBLE SOLID                  RT. &amp; LT. STA. 145+08-148+38 660                  RT. &amp; CL. STA. 145+08-148+38 660</p> <p style="text-align: right;">SUB-TOTAL 1,320</p> <p style="text-align: right;">TOTAL 3,402</p>	<p>60618300 CONCRETE MEDIAN SURFACE, 4 INCH S.F. <i>Revised 6.9.06</i></p> <p>LT. &amp; CL. STA. 127+06-127+16 51.0                  CL. &amp; RT. STA. 129+79-129+95 40.0                  CL. &amp; RT. STA. 130+49-130+56 28.0                  LT. &amp; CL. STA. 134+46-134+56 38.0                  CL. &amp; RT. STA. 135+38-135+52 32.0                  CL. &amp; RT. STA. 140+86-150+00 38.0                  STA. 287+34.45-289+61.17 3,794.8                  MULFORD STA. 9+91.19-12+14.30 1,606.2                  MULFORD STA. 20+18.38-22+23.00 2,496.1                  S. W. ISLAND RT. STA. 226+10 527.4                  S. E. ISLAND RT. STA. 226+90 342.7                  S. W. ISLAND RT. STA. 261+95 101.2                  N. W. ISLAND LT. STA. 262+05 125.4                  S. E. ISLAND RT. STA. 262.60 140.0                  N. E. ISLAND LT. STA. 262+70 266.0                  N. W. ISLAND LT. STA. 279+40 712.8                  S. W. ISLAND RT. STA. 279+60 331.1                  N. E. ISLAND LT. STA. 280+45 330.0                  S. E. ISLAND RT. STA. 280+55 784.3</p> <p style="text-align: right;">TOTAL 11,785.0</p>	<p>78000100 THERMOPLASTIC PAVEMENT MARKING - LETTERS AND SYMBOLS S.F.</p> <p>WHITE</p> <p>LT TURN LT. STA. 108+91 12.7                  RT &amp; THRU LT. STA. 109+35 25.3                  LT TURN LT. STA. 109+49 12.7                  LT TURN LT. STA. 110+04 12.7                  LT TURN LT. STA. 111+06 12.7                  LT TURN LT. STA. 112+09 12.7                  LT TURN RT. STA. 118+66 12.7                  LT TURN RT. STA. 119+22 12.7                  LT TURN RT. STA. 119+79 12.7                  LT TURN CL. STA. 123+40 12.7                  LT TURN CL. STA. 123+81 12.7                  LT TURN CL. STA. 124+21 12.7                  LT TURN RT. STA. 127+50 12.7                  LT TURN RT. STA. 128+00 12.7                  LT TURN RT. STA. 128+48 12.7                  LT TURN CL. STA. 130+04 12.7                  LT TURN CL. STA. 130+64 12.7                  LT TURN CL. STA. 131+23 12.7                  LT TURN RT. STA. 133+54 12.7                  LT TURN RT. STA. 134+00 12.7                  LT TURN CL. STA. 135+64 12.7                  LT TURN CL. STA. 136+18 12.7                  LT TURN CL. STA. 136+72 12.7                  LT TURN LT. STA. 141+13 12.7                  LT TURN LT. STA. 141+71 12.7                  LT TURN LT. STA. 142+31 12.7                  LT TURN RT. STA. 143+72 12.7                  LT TURN RT. STA. 144+06 12.7                  LT TURN LT. STA. 145+33 12.7                  LT TURN LT. STA. 145+87 12.7                  LT TURN LT. STA. 146+41 12.7                  LT TURN RT. STA. 148+58 12.7                  LT TURN RT. STA. 149+47 12.7                  RT TURN RT. STA. 149+67 12.7                  RT TURN RT. STA. 150+23 12.7                  LT TURN RT. STA. 150+34 12.7                  LT &amp; THRU RT. STA. 151+05 25.3                  RT TURN RT. STA. 151+20 12.7                  LT TURN LT. STA. 151+61 12.7                  LT TURN LT. STA. 151+91 12.7                  LT TURN CL. STA. 153+82 12.7                  LT TURN CL. STA. 154+72 12.7                  LT TURN CL. STA. 155+62 12.7                  LT TURN CL. STA. 156+56 12.7</p> <p style="text-align: right;">TOTAL 584.0</p>	<p>78000400 THERMOPLASTIC PAVEMENT MARKING - LINE 6" FT.</p> <p>WHITE - CROSSWALK                  LT. &amp; RT. STA. 109+27 93                  LT. STA. 109+27-109+72 90                  LT. &amp; RT. STA. 128+77 64                  LT. &amp; RT. STA. 128+89 78                  LT. &amp; RT. STA. 140+26 56                  LT. &amp; RT. STA. 140+38 78</p> <p style="text-align: right;">TOTAL 459</p>	<p>78000500 THERMOPLASTIC PAVEMENT MARKING - LINE 8" FT.</p> <p>WHITE - SOLID</p> <p>LT. STA. 109+43 5                  LT. STA. 109+55 5                  LT. STA. 109+78-112+29 251                  RT. STA. 118+44-120+05 161                  LT. STA. 123+14-124+41 127                  RT. STA. 127+29-128+73 144                  LT. STA. 129+79-131+43 164                  RT. STA. 133+34-134+43 109                  LT. STA. 135+39-146+92 153                  LT. STA. 140+87-142+51 164                  RT. STA. 143+52-144+32 80                  LT. STA. 145+07-146+61 154                  RT. STA. 148+38-150+30 192                  RT. STA. 148+56 134                  RT. STA. 150+29-150+50 24                  RT. STA. 151+00 6                  RT. STA. 151+12 6                  LT. STA. 151+32-152+11 79                  LT. STA. 152+11-153+52 35</p> <p style="text-align: right;">SUB-TOTAL 1,993</p>	<p>60619100 CONCRETE MEDIAN, TYPE SB (SPECIAL) S.F.</p> <p>STA. 201+17.31-206+09.66 2,964.4                  STA. 207+06.70-210+01.20 1,899.6                  STA. 216+66.44-219+48.31 1,817.7                  STA. 223+10.86-226+06.93 1,885.1                  STA. 227+00.39-229+96.50 1,888.2                  STA. 234+89.92-237+76.20 1,852.9                  STA. 238+25.28-244+12.86 2,434.4                  STA. 244+88.87-247+97.19 1,988.6                  STA. 252+65.02-255+69.48 1,953.2                  STA. 256+60.90-261+88.44 3,107.8                  STA. 262+81.00-269+16.48 3,772.3                  STA. 270+04.14-271+65.92 1,383.9                  STA. 275+73.02-279+27.30 2,327.2                  STA. 280+70.51-282+33.31 1,423.2                  MULFORD STA. 9+32.60-9+91.19 474.3                  MULFORD STA. 12+14.30-15+24.43 2,052.6                  MULFORD STA. 16+99.09-20+18.38 2,173.0                  EASTROCK STA. 601+24.61-602+32.50 560.0                  EASTROCK STA. 602+73.78-604+04.60 621.0</p> <p style="text-align: right;">TOTAL 36,579.4</p>	<p>78000200 THERMOPLASTIC PAVEMENT MARKING - LINE 4" FT.</p> <p>SKIP-DASHED WHITE (10' DASH-30' SKIP)</p> <p>RT. STA. 109+78-128+73 474                  LT. STA. 109+78-128+77 475                  LT. STA. 129+79-140+26 262                  RT. STA. 129+79-140+26 262                  LT. STA. 140+38-150+59 225                  RT. STA. 140+38-150+80 260                  LT. STA. 151+31-156+26 124</p> <p style="text-align: right;">SUB-TOTAL 2,082</p>	<p>78000600 THERMOPLASTIC PAVEMENT MARKING - LINE 12" FT.</p> <p>YELLOW - DIAGONAL                  RT. &amp; LT. STA. 145+08-148+38 50</p> <p style="text-align: right;">TOTAL 50</p>
---	---	--	--	--	--	--	--	---	--



E.A. RTE.	SECTION	COUNTY	TOTAL SHEETS	SHEET NO.
303	D3-00520-00-WR	WINNEBAGO	254	176
STA.	TO STA.			
FED. ROAD DIST. NO.	ILLINOIS	FED. AID PROJECT		



NOTE: RELOCATE EXISTING MAST ARM MOUNTED STREET NAME SIGN TO NEW MAST ARM ASSEMBLY. COST INCLUDED IN STEEL COMBINATION MAST ARM ASSEMBLY AND POLE.

REMOVE EXISTING TRAFFIC SIGNAL EQUIPMENT

- NW CORNER  
SIGNAL POST, SIGNAL BASE, 1-FACE PED HEAD, PED PUSH BUTTON
- NE CORNER  
HANDHOLE, SIGNAL BASE, SIGNAL POST, 2-FACE PED HEAD, 2 PUSH BUTTONS
- SE CORNER  
HANDHOLE, SIGNAL BASE, SIGNAL POST, 2-FACE PED HEAD, 2 PUSH BUTTONS
- SW CORNER  
HANDHOLE, SIGNAL BASE, SIGNAL POST, 1-FACE PED HEAD, 1 PUSH BUTTON, MAST ARM ASSEMBLY AND BASE, 3 SIGNAL HEADS, 1 VIDEO DETECTION CAMERA, 1 EMERGENCY VEHICLE DETECTOR

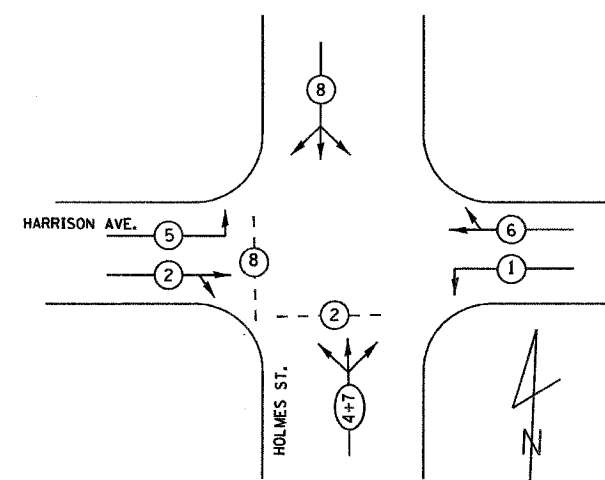
- LEGEND**
- STEEL COMBINATION MAST ARM ASSEMBLY AND POLE
  - PEDESTRIAN PUSH BUTTON
  - PEDESTRIAN SIGNAL HEAD
  - VIDEO DETECTION CAMERA
  - TRAFFIC SIGNAL HEAD
  - EMERGENCY VEHICLE LIGHT DETECTOR
  - VIDEO SURVEILLANCE CAMERA

"Note: Lighting items are shown for information only. These items will be bid as part of a separate project."

Added 6-9-06

E.A. RTE. 1	SECTION	COUNTY	TOTAL SHEETS	SHEET NO.
303	03-00520-00-WR	WINNEBAGO	254	177
STA.		TO STA.		
FED. ROAD DIST. NO.		ILLINOIS FED. AID PROJECT		

PHASE DESIGNATION DIAGRAM



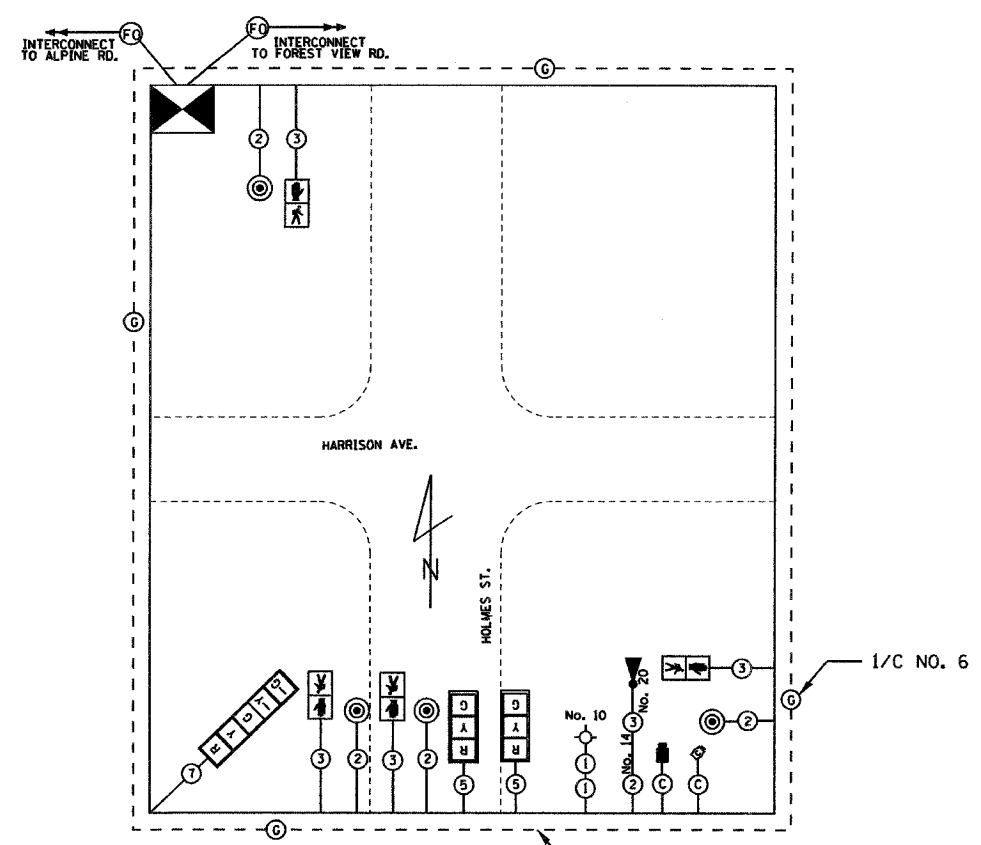
PROPOSED EMERGENCY VEHICLE PREEMPTORS			
EMERGENCY VEHICLE PREEMPTOR	1	2	3
MOVEMENT	==	==	

1=2+5  
2=1+6  
3=4+8

"Note: Lighting items are shown for information only. These items will be bid as part of a separate project."

Added 6-9-06

WIRING DIAGRAM



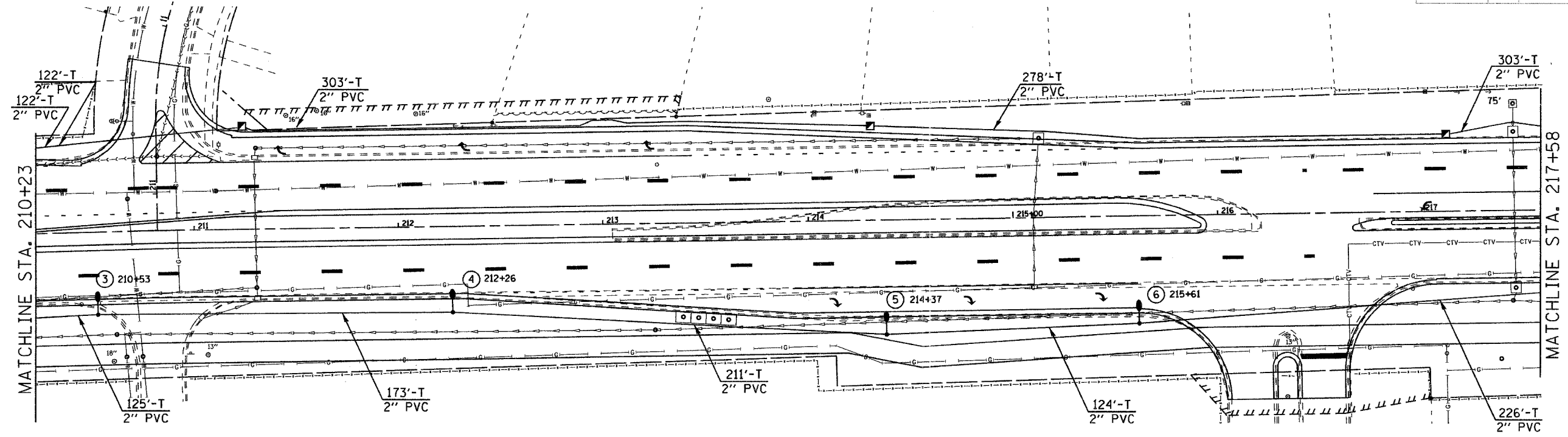
LEGEND

- ③ NO. OF CONDUCTORS IN SIGNAL CABLE
- |   |
|---|
| R |
| Y |
| G |

 TRAFFIC SIGNAL HEAD W/BACKPLATE
- EMERGENCY PREEMPT LIGHT DETECTOR AND CONFIRMATION BEACON
- ⊙ PEDESTRIAN PUSH BUTTON
- PEDESTRIAN SIGNAL HEAD
- LUMINAIRE, SODIUM VAPOR 250 W, HPS
- VIDEO DETECTION CAMERA
- VIDEO SURVEILLANCE CAMERA

GROUNDING CIRCUIT AS PER ST'D. 873001

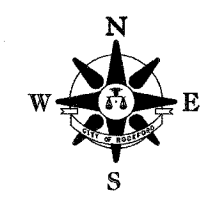
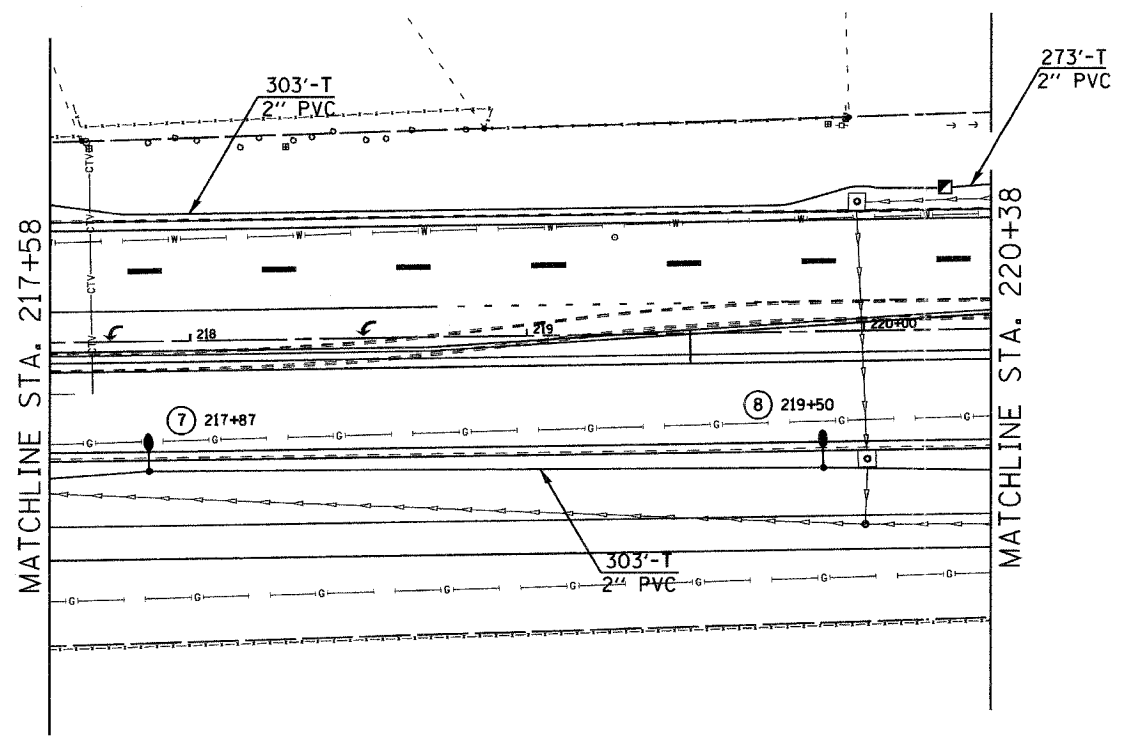
ROUTE	SECTION	COUNTY	TOTAL SHEETS	SHEET NO.
303	03-00520-00-WR	WINNEBAGO	254	178
STA.		TO STA.		
FED. ROAD DIST. NO.		ILLINOIS FED. AID PROJECT		



- LEGEND**
- STEEL COMBINATION MAST ARM ASSEMBLY AND POLE
  - PEDESTRIAN PUSH BUTTON
  - PEDESTRIAN SIGNAL HEAD
  - VIDEO DETECTION CAMERA
  - TRAFFIC SIGNAL HEAD
  - EMERGENCY VEHICLE LIGHT DETECTOR

"Note: Lighting items are shown for information only. These items will be bid as part of a separate project."

*Added 6-9-06*



F.A. R.T.E.	SECTION	COUNTY	TOTAL SHEETS	SHEET NO.
303	D3-00520-00-WR	WINNEBAGO	254	179
STA. TO STA.		ILLINOIS FED. AID PROJECT		

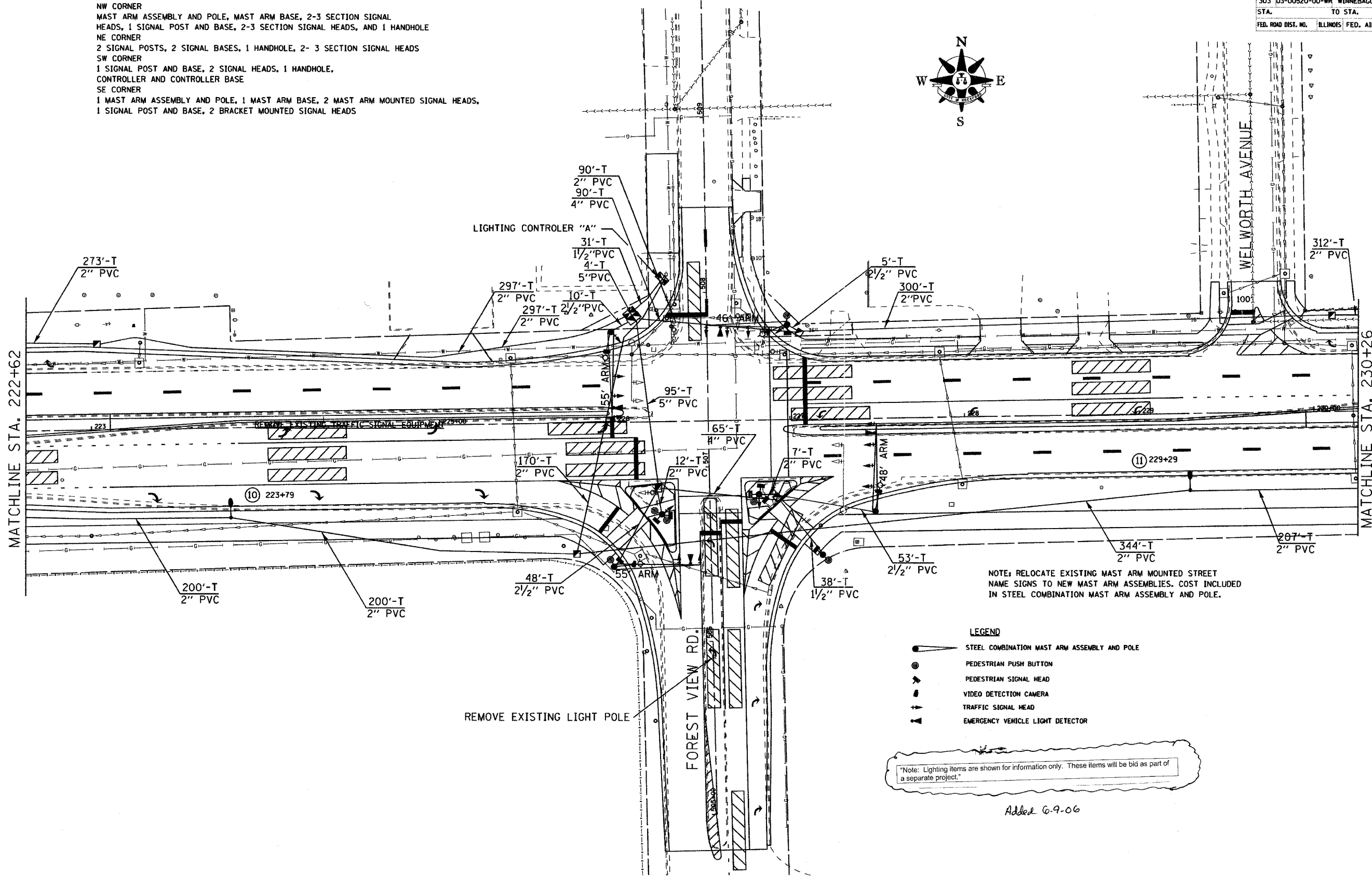
**REMOVE EXISTING TRAFFIC SIGNAL EQUIPMENT**

NW CORNER  
 MAST ARM ASSEMBLY AND POLE, MAST ARM BASE, 2-3 SECTION SIGNAL HEADS, 1 SIGNAL POST AND BASE, 2-3 SECTION SIGNAL HEADS, AND 1 HANDHOLE

NE CORNER  
 2 SIGNAL POSTS, 2 SIGNAL BASES, 1 HANDHOLE, 2-3 SECTION SIGNAL HEADS

SW CORNER  
 1 SIGNAL POST AND BASE, 2 SIGNAL HEADS, 1 HANDHOLE, CONTROLLER AND CONTROLLER BASE

SE CORNER  
 1 MAST ARM ASSEMBLY AND POLE, 1 MAST ARM BASE, 2 MAST ARM MOUNTED SIGNAL HEADS, 1 SIGNAL POST AND BASE, 2 BRACKET MOUNTED SIGNAL HEADS



NOTE: RELOCATE EXISTING MAST ARM MOUNTED STREET NAME SIGNS TO NEW MAST ARM ASSEMBLIES. COST INCLUDED IN STEEL COMBINATION MAST ARM ASSEMBLY AND POLE.

- LEGEND**
- STEEL COMBINATION MAST ARM ASSEMBLY AND POLE
  - PEDESTRIAN PUSH BUTTON
  - PEDESTRIAN SIGNAL HEAD
  - VIDEO DETECTION CAMERA
  - TRAFFIC SIGNAL HEAD
  - EMERGENCY VEHICLE LIGHT DETECTOR

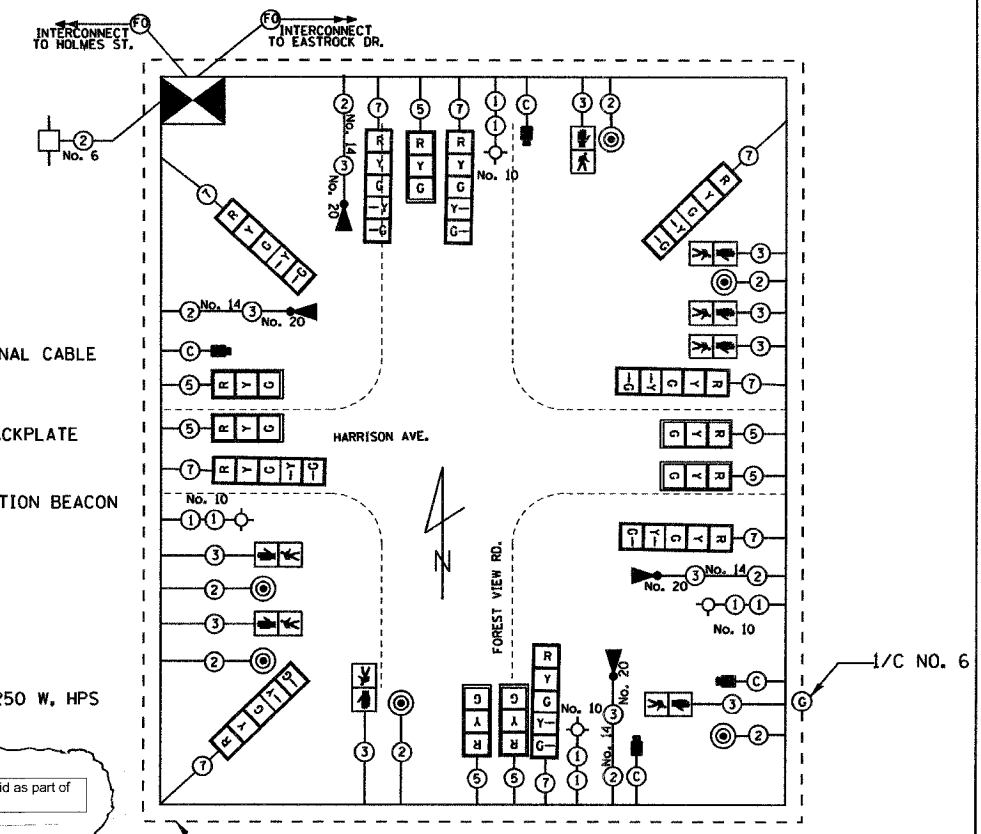
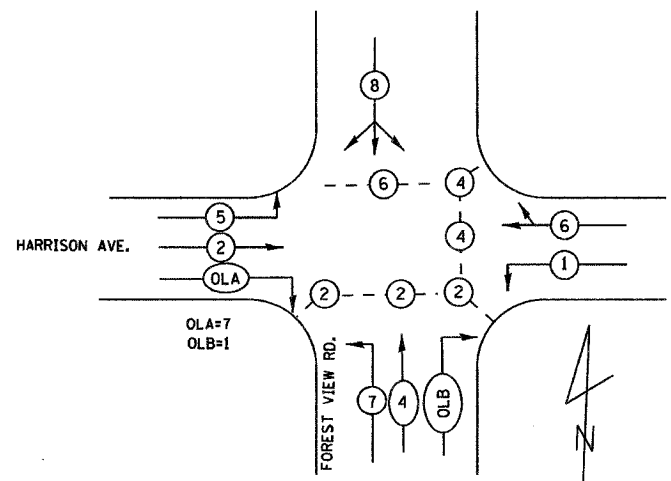
\*Note: Lighting items are shown for information only. These items will be bid as part of a separate project.\*

Added 6-9-06

E.A. RTE.	SECTION	COUNTY	TOTAL SHEETS	SHEET NO.
303	03-00520-00-WR	WINNEBAGO	254	180
STA.	TO STA.			
FED. ROAD DIST. NO.	ILLINOIS	FED. AID PROJECT		

WIRING DIAGRAM

PHASE DESIGNATION DIAGRAM



LEGEND

- ③ NO. OF CONDUCTORS IN SIGNAL CABLE
- RYG TRAFFIC SIGNAL HEAD W/BACKPLATE
- ▶ LIGHT DETECTOR AND CONFIRMATION BEACON
- ⊙ PEDESTRIAN PUSH BUTTON
- ⊙ PEDESTRIAN SIGNAL HEAD
- ⊙ LUMINAIRE, SODIUM VAPOR 250 W, HPS

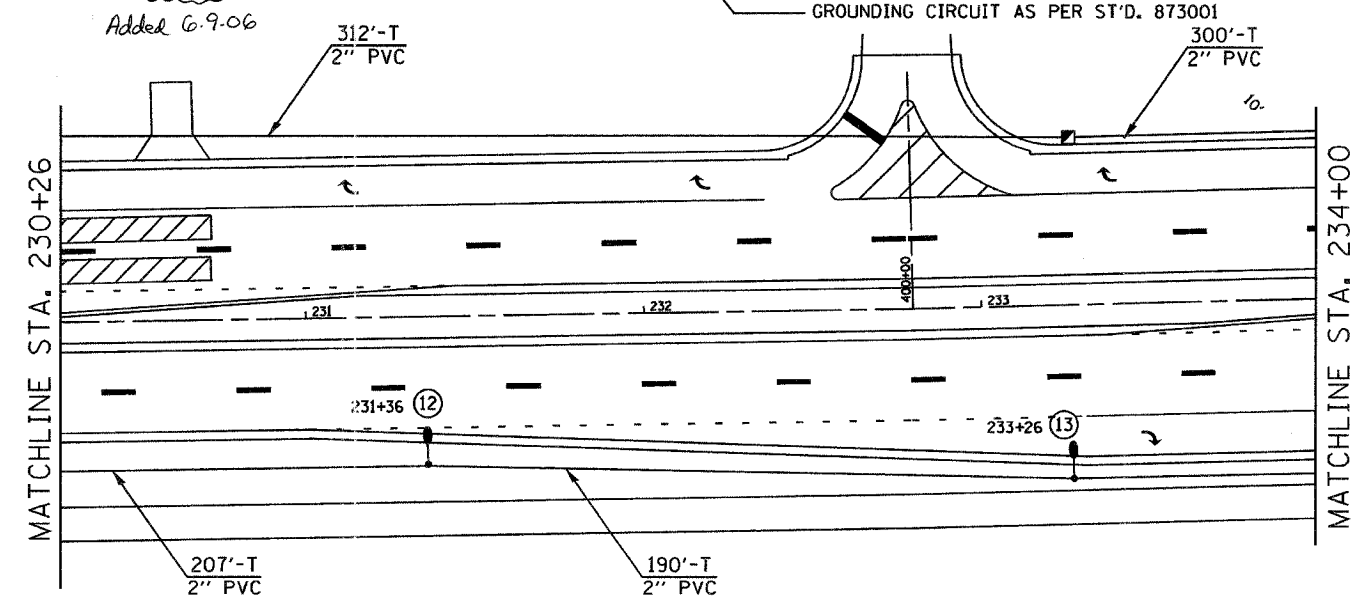
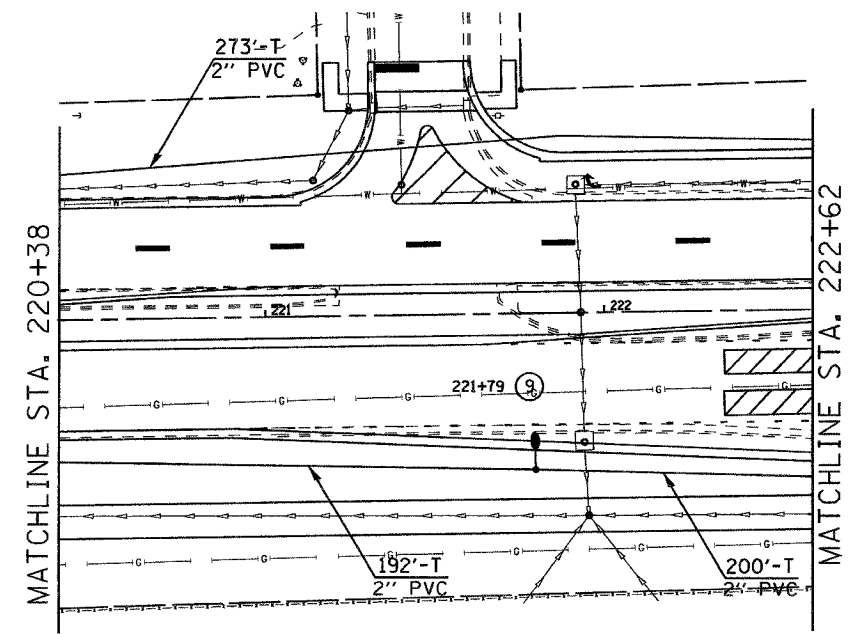
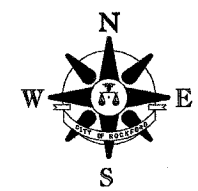
LEGEND

- ⊙ STEEL COMBINATION MAST ARM ASSEMBLY AND POLE
- ⊙ PEDESTRIAN PUSH BUTTON
- ▶ PEDESTRIAN SIGNAL HEAD
- ▶ VIDEO DETECTION CAMERA
- ▶ TRAFFIC SIGNAL HEAD
- ▶ EMERGENCY VEHICLE LIGHT DETECTOR

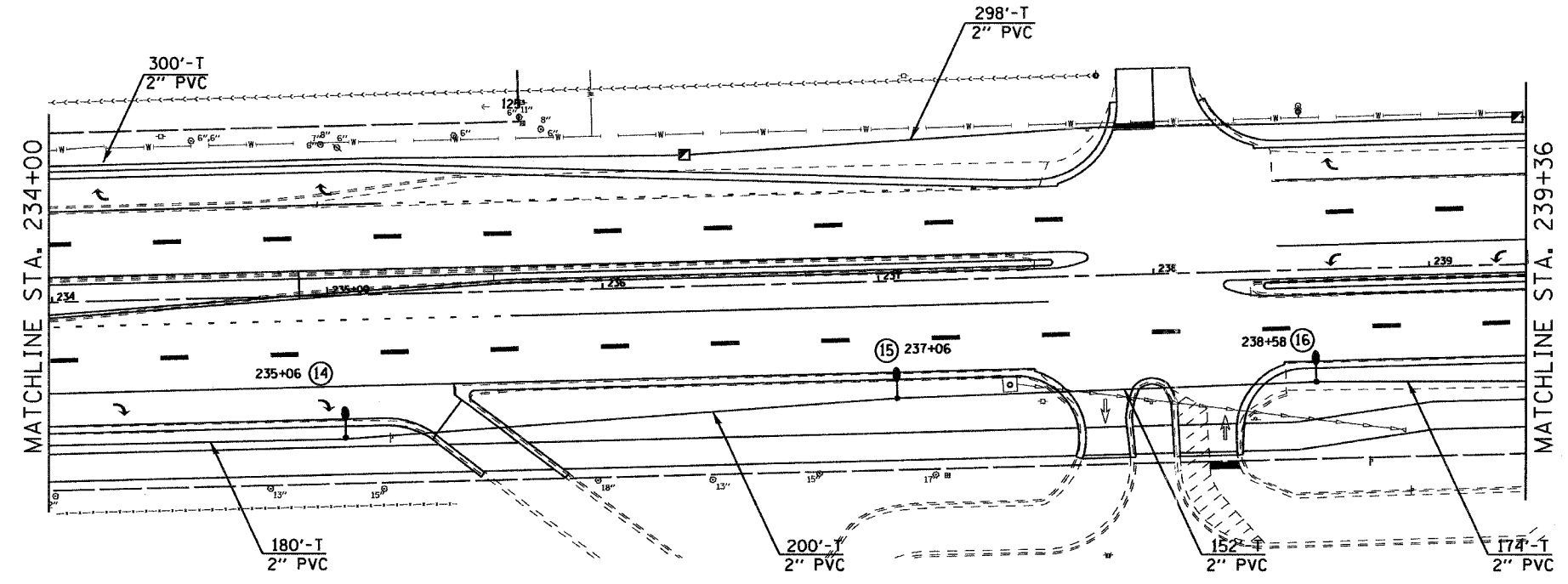
PROPOSED EMERGENCY VEHICLE PREEMPTORS			
EMERGENCY VEHICLE PREEMPTOR	1	2	3
MOVEMENT			

1=2+5  
2=1+6  
3=4+8

Note: Lighting items are shown for information only. These items will be bid as part of a separate project.



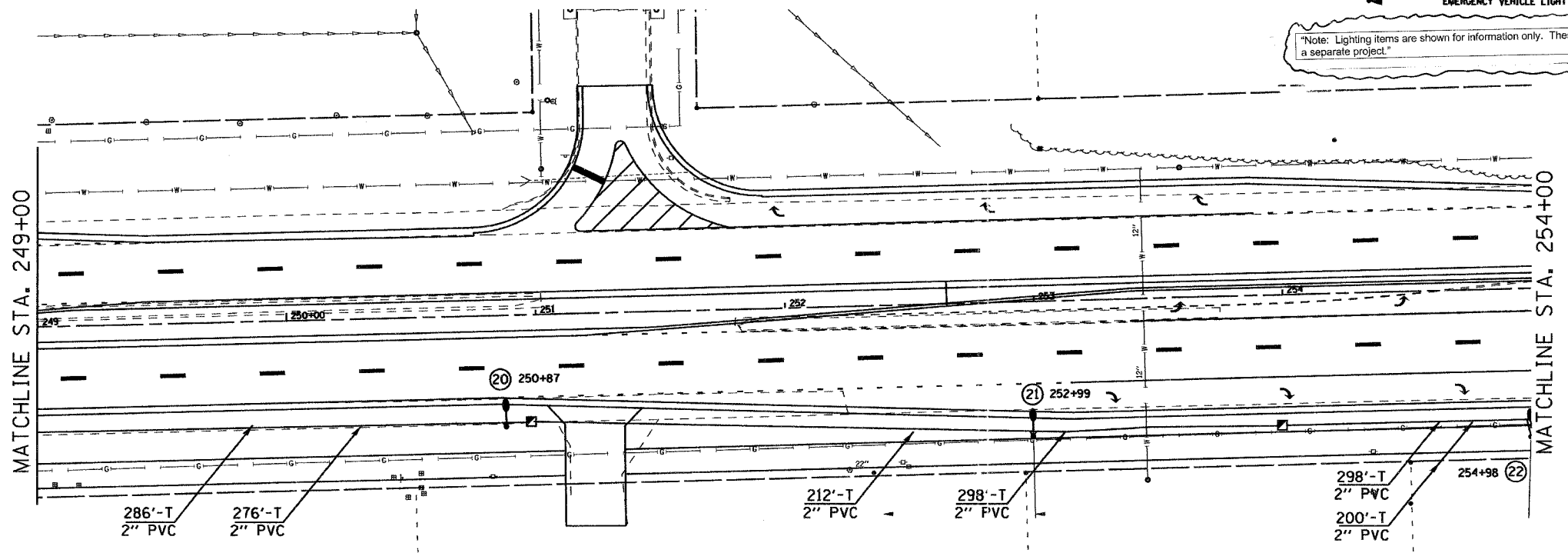
ROUTE	SECTION	COUNTY	TOTAL SHEETS	SHEET NO.
303	05-00520-00-WR	WINNEBAGO	254	181
STA.	TO STA.			
FED. ROAD DIST. NO.	ILLINOIS	FED. AID PROJECT		



- LEGEND**
- STEEL COMBINATION MAST ARM ASSEMBLY AND POLE
  - PEDESTRIAN PUSH BUTTON
  - PEDESTRIAN SIGNAL HEAD
  - VIDEO DETECTION CAMERA
  - TRAFFIC SIGNAL HEAD
  - EMERGENCY VEHICLE LIGHT DETECTOR

Note: Lighting items are shown for information only. These items will be bid as part of a separate project.

*Added 6-9-06*

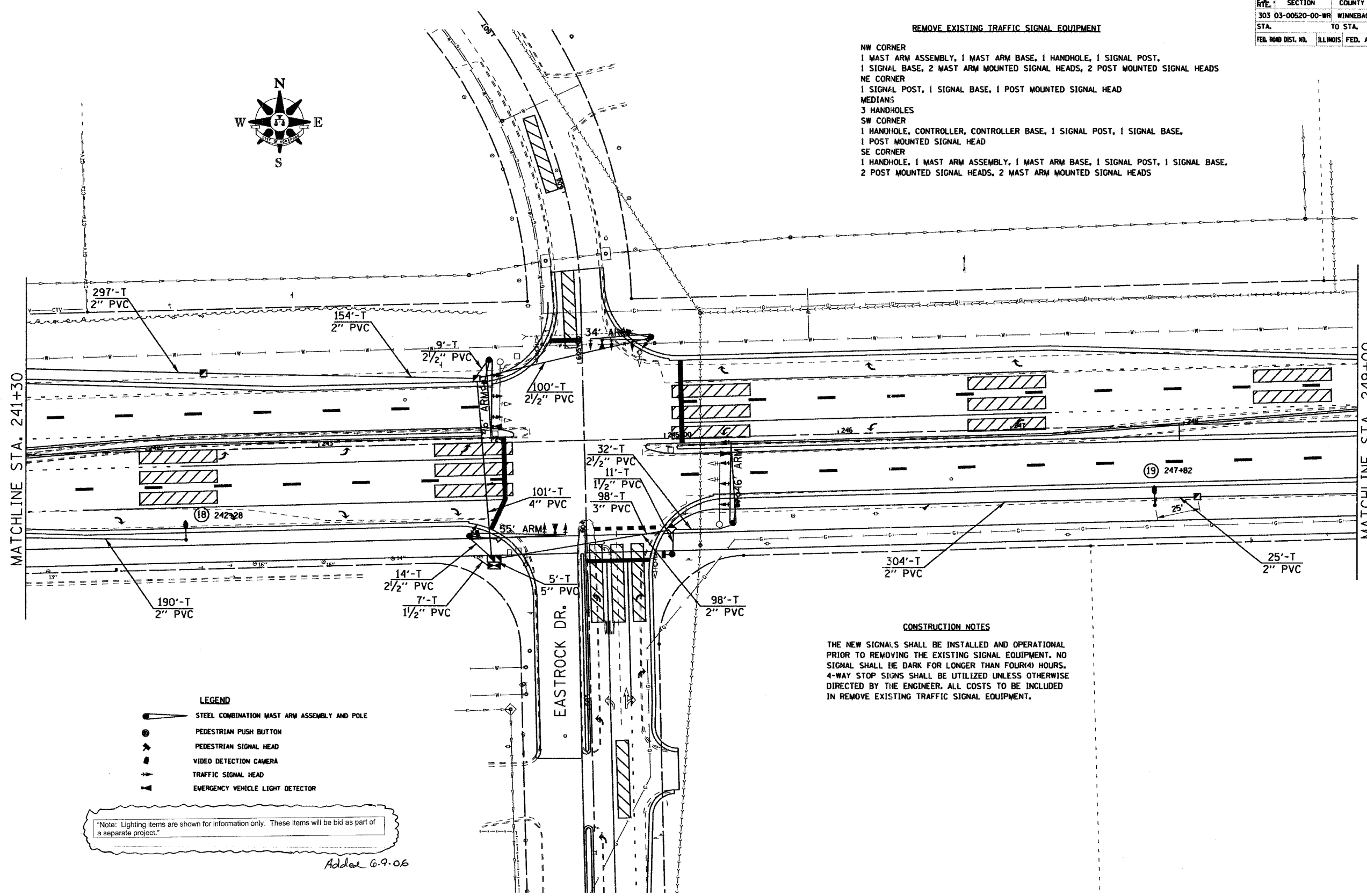


**TRAFFIC SIGNALS /LIGHTING**

ROUTE	SECTION	COUNTY	TOTAL SHEETS	SHEETS NO.
303	03-00620-00-WR	WINNEBAGO	254	182
STA.	TO STA.			
FED. ROAD DIST. NO.	ILLINOIS FED. AID PROJECT			

**REMOVE EXISTING TRAFFIC SIGNAL EQUIPMENT**

- NW CORNER
- 1 MAST ARM ASSEMBLY, 1 MAST ARM BASE, 1 HANDHOLE, 1 SIGNAL POST,
- 1 SIGNAL BASE, 2 MAST ARM MOUNTED SIGNAL HEADS, 2 POST MOUNTED SIGNAL HEADS
- NE CORNER
- 1 SIGNAL POST, 1 SIGNAL BASE, 1 POST MOUNTED SIGNAL HEAD
- MEDIANS
- 3 HANDHOLES
- SW CORNER
- 1 HANDHOLE, CONTROLLER, CONTROLLER BASE, 1 SIGNAL POST, 1 SIGNAL BASE,
- 1 POST MOUNTED SIGNAL HEAD
- SE CORNER
- 1 HANDHOLE, 1 MAST ARM ASSEMBLY, 1 MAST ARM BASE, 1 SIGNAL POST, 1 SIGNAL BASE,
- 2 POST MOUNTED SIGNAL HEADS, 2 MAST ARM MOUNTED SIGNAL HEADS



- LEGEND**
- STEEL COMBINATION MAST ARM ASSEMBLY AND POLE
  - PEDESTRIAN PUSH BUTTON
  - PEDESTRIAN SIGNAL HEAD
  - VIDEO DETECTION CAMERA
  - TRAFFIC SIGNAL HEAD
  - EMERGENCY VEHICLE LIGHT DETECTOR

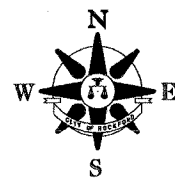
"Note: Lighting items are shown for information only. These items will be bid as part of a separate project."

Added 6-9-06

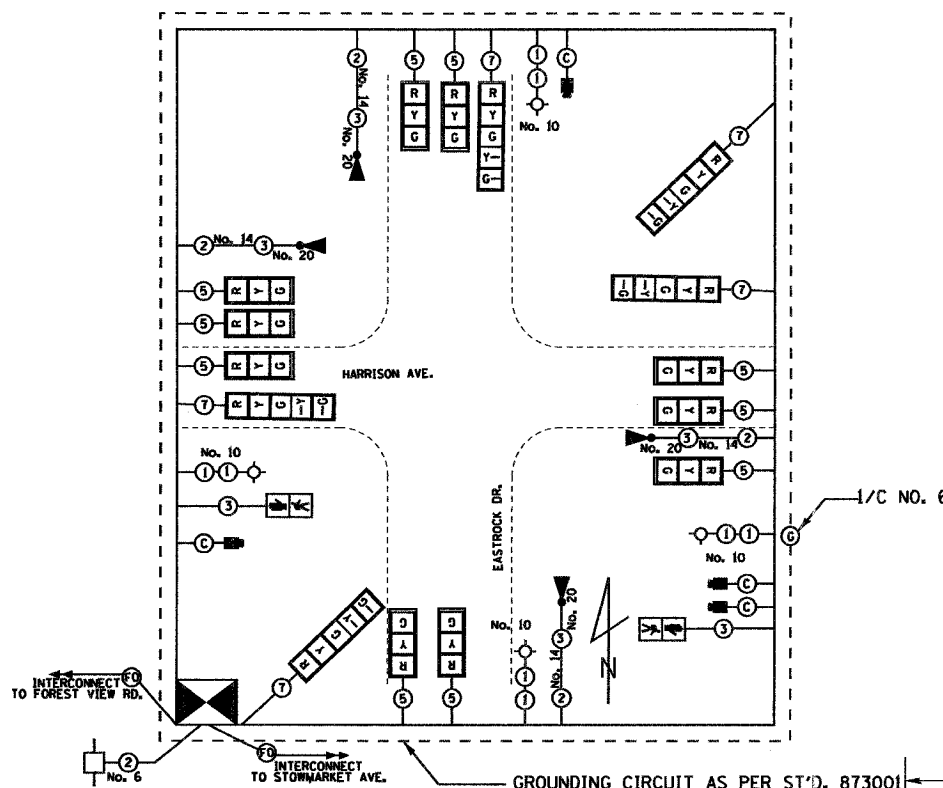
**CONSTRUCTION NOTES**

THE NEW SIGNALS SHALL BE INSTALLED AND OPERATIONAL PRIOR TO REMOVING THE EXISTING SIGNAL EQUIPMENT. NO SIGNAL SHALL BE DARK FOR LONGER THAN FOUR(4) HOURS. 4-WAY STOP SIGNS SHALL BE UTILIZED UNLESS OTHERWISE DIRECTED BY THE ENGINEER. ALL COSTS TO BE INCLUDED IN REMOVE EXISTING TRAFFIC SIGNAL EQUIPMENT.

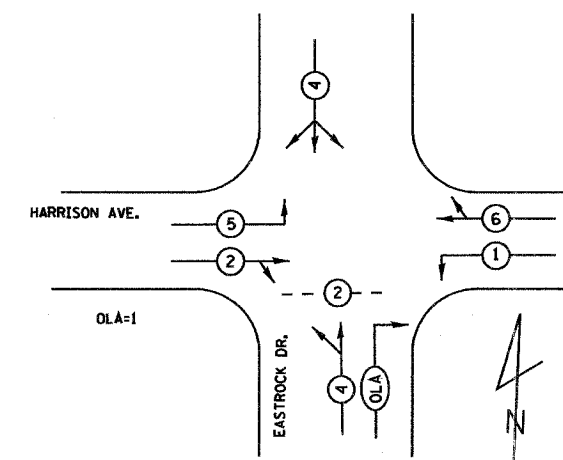
ROUTE	SECTION	COUNTY	TOTAL SHEETS	SHEET NO.
303	03-00520-00-WR	WINNEBAGO	254	183
STA.	TO STA.			
	ILLINOIS FED. AID PROJECT			



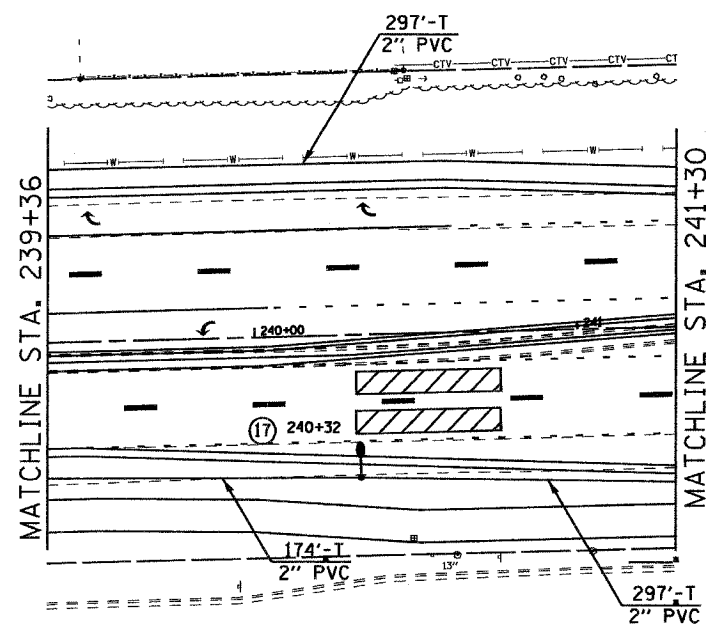
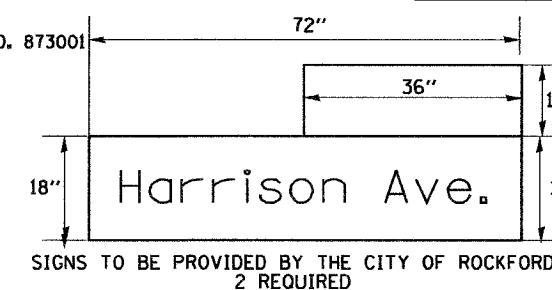
WIRING DIAGRAM



PHASE DESIGNATION DIAGRAM



PROPOSED EMERGENCY VEHICLE PREEMPTORS			
EMERGENCY VEHICLE PREEMPTOR	1	2	3
MOVEMENT	—	—	



LEGEND

- ③ NO. OF CONDUCTORS IN SIGNAL CABLE
- R  
Y  
G TRAFFIC SIGNAL HEAD W/BACKPLATE
- ▶ EMERGENCY PREEMPT LIGHT DETECTOR AND CONFIRMATION BEACON
- ⊙ PEDESTRIAN PUSH BUTTON
- ⏏ PEDESTRIAN SIGNAL HEAD
- ⊙ No. 10 LUMINAIRE, SODIUM VAPOR 250 W, HPS

LEGEND

- ▶ STEEL COMBINATION MAST ARM ASSEMBLY AND POLE
- ⊙ PEDESTRIAN PUSH BUTTON
- ▶ PEDESTRIAN SIGNAL HEAD
- ▶ VIDEO DETECTION CAMERA
- ▶ TRAFFIC SIGNAL HEAD
- ▶ EMERGENCY VEHICLE LIGHT DETECTOR

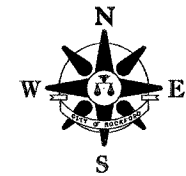
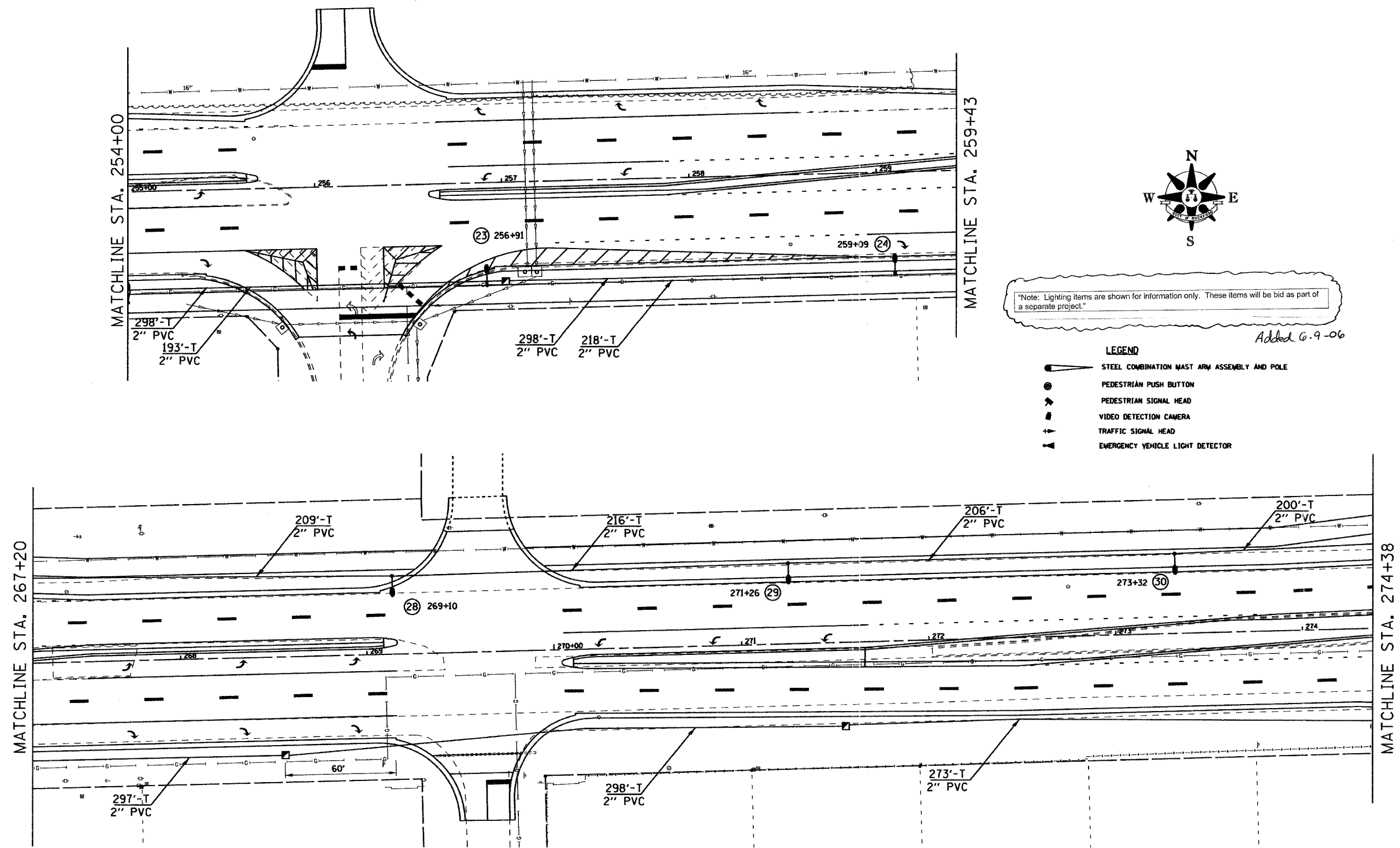
\*Note: Lighting items are shown for information only. These items will be bid as part of a separate project.\*

Added 6-9-06

NOTE: RELOCATE EXISTING "EASTROCK DR." STREET NAME SIGNS TO NEW MAST ARM ASSEMBLIES. COST INCLUDED IN STEEL COMBINATION MAST ARM ASSEMBLY AND POLE.



ROUTE	SECTION	COUNTY	TOTAL SHEETS	SHEET NO.
303	03-00520-00-WR	WINNEBAGO	254	184
STA. TO STA.				
FED. ROAD DIST. NO.			ILLINOIS FED. AID PROJECT	



"Note: Lighting items are shown for information only. These items will be bid as part of a separate project."

Added 6.9-06

- LEGEND**
- STEEL COMBINATION MAST ARM ASSEMBLY AND POLE
  - PEDESTRIAN PUSH BUTTON
  - PEDESTRIAN SIGNAL HEAD
  - VIDEO DETECTION CAMERA
  - TRAFFIC SIGNAL HEAD
  - EMERGENCY VEHICLE LIGHT DETECTOR

**TRAFFIC SIGNALS /LIGHTING**

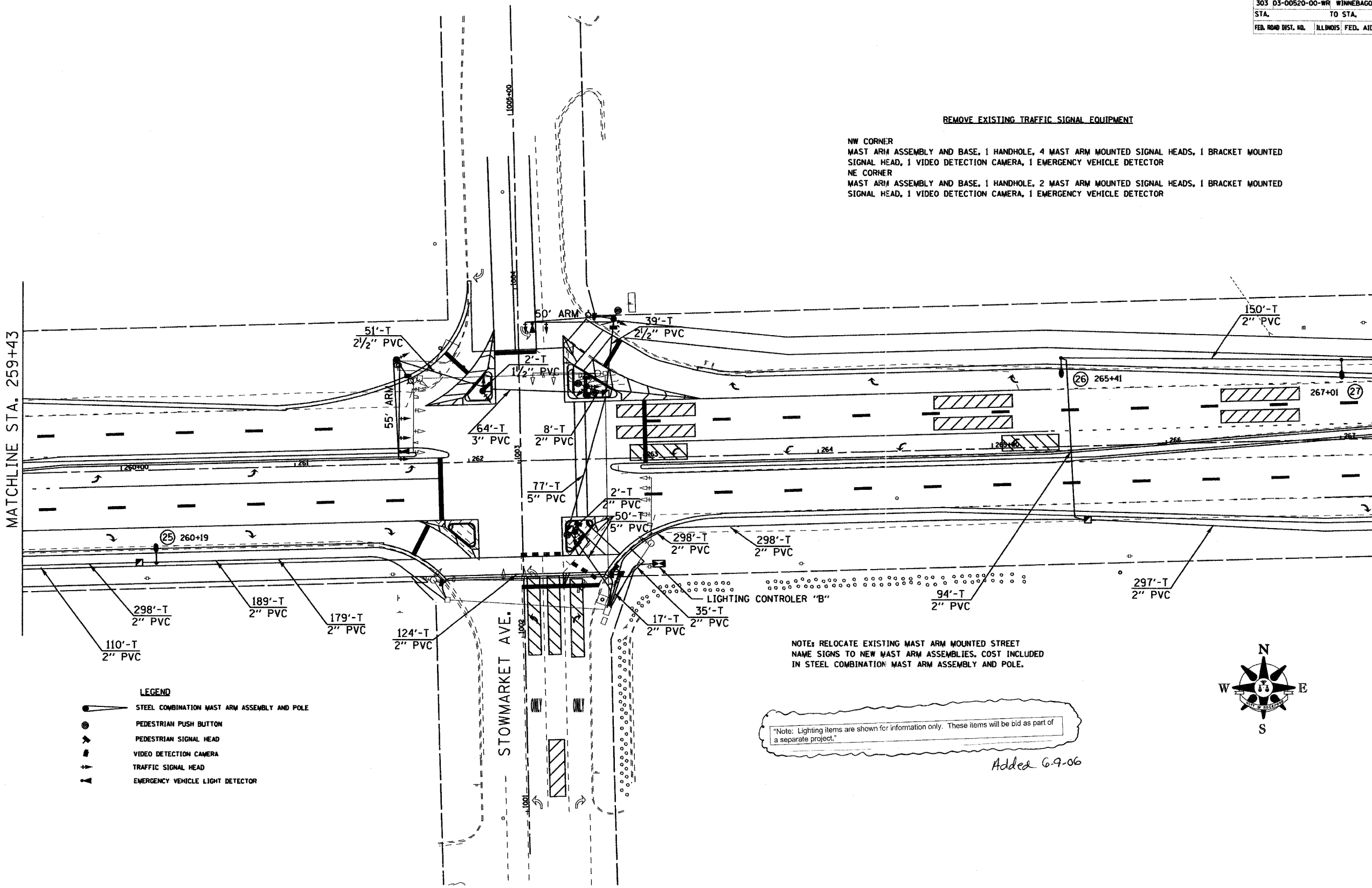
ROUTE	SECTION	COUNTY	TOTAL SHEETS	SHEET NO.
303	03-00520-00-WR	WINNEBAGO	254	185
STA.		TO STA.		
FED. ROAD DIST. NO.		ILLINOIS FED. AID PROJECT		

REMOVE EXISTING TRAFFIC SIGNAL EQUIPMENT

NW CORNER  
 MAST ARM ASSEMBLY AND BASE, 1 HANDHOLE, 4 MAST ARM MOUNTED SIGNAL HEADS, 1 BRACKET MOUNTED SIGNAL HEAD, 1 VIDEO DETECTION CAMERA, 1 EMERGENCY VEHICLE DETECTOR  
 NE CORNER  
 MAST ARM ASSEMBLY AND BASE, 1 HANDHOLE, 2 MAST ARM MOUNTED SIGNAL HEADS, 1 BRACKET MOUNTED SIGNAL HEAD, 1 VIDEO DETECTION CAMERA, 1 EMERGENCY VEHICLE DETECTOR

MATCHLINE STA. 259+43

MATCHLINE STA. 267+20

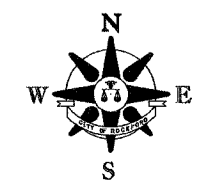


- LEGEND**
- STEEL COMBINATION MAST ARM ASSEMBLY AND POLE
  - PEDESTRIAN PUSH BUTTON
  - PEDESTRIAN SIGNAL HEAD
  - VIDEO DETECTION CAMERA
  - TRAFFIC SIGNAL HEAD
  - EMERGENCY VEHICLE LIGHT DETECTOR

NOTE: RELOCATE EXISTING MAST ARM MOUNTED STREET NAME SIGNS TO NEW MAST ARM ASSEMBLIES. COST INCLUDED IN STEEL COMBINATION MAST ARM ASSEMBLY AND POLE.

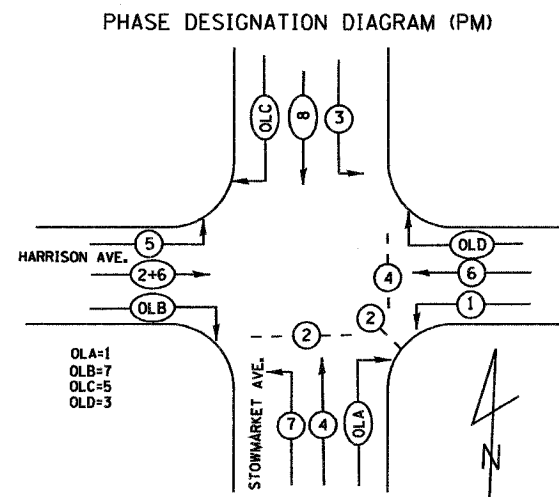
Note: Lighting items are shown for information only. These items will be bid as part of a separate project.

Addex 6-9-06



SECTION	COUNTY	TOTAL SHEETS	SHEET NO.
303 03-00520-00-WR	WINNEBAGO	254	186
STA. TO STA.			
FED. ROAD DIST. NO.		ILLINOIS FED. AID PROJECT	

WIRING DIAGRAM

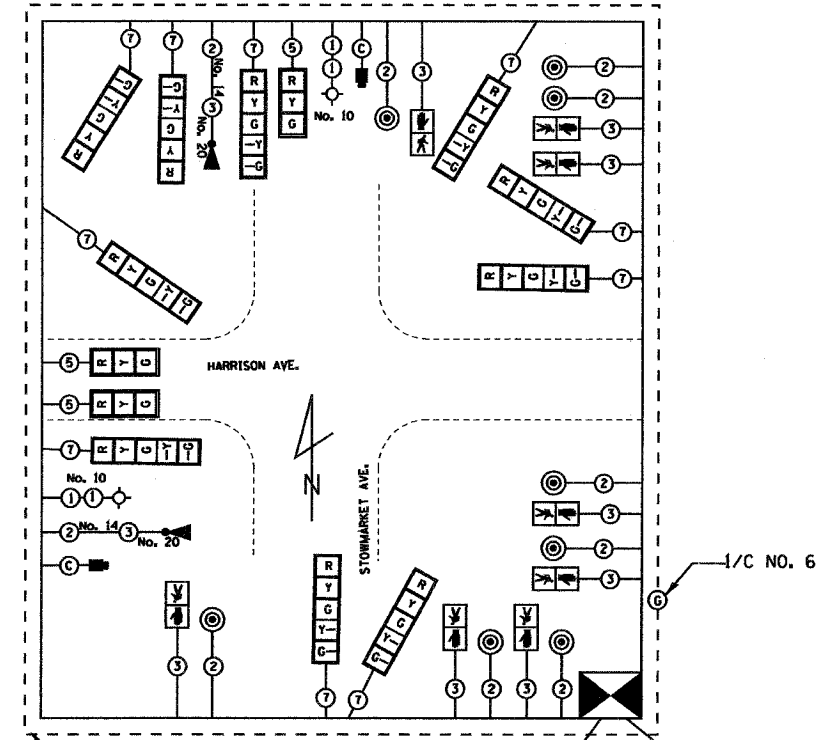


PROPOSED EMERGENCY VEHICLE PREEMPTORS			
EMERGENCY VEHICLE PREEMPTOR	1	2	3
MOVEMENT	≡	≡	≡

1=2+5  
2=1+6  
3=4+8

"Note: Lighting items are shown for information only. These items will be bid as part of a separate project."

Added 6.9.06



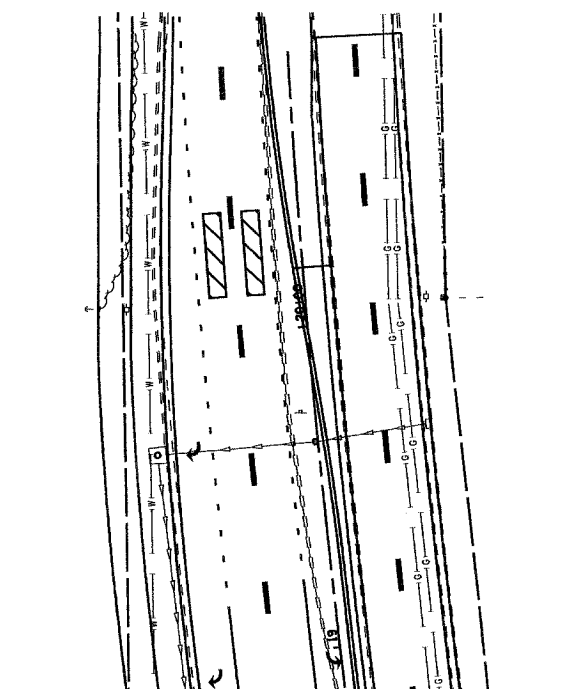
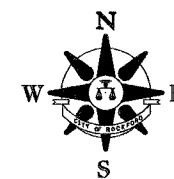
GROUNDING CIRCUIT AS PER ST'D. 873001

- LEGEND
- ③ NO. OF CONDUCTORS IN SIGNAL CABLE
  - |   |
|---|
| R |
| Y |
| G |

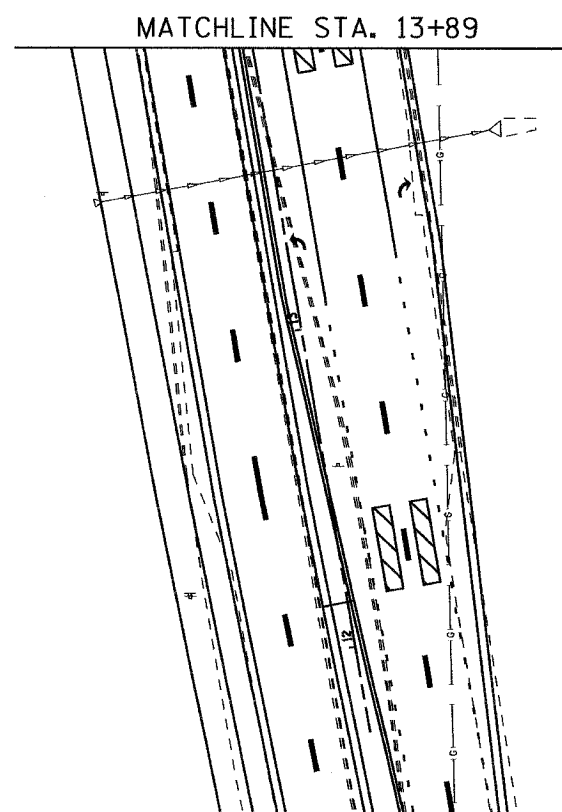
 TRAFFIC SIGNAL HEAD W/BACKPLATE
  - ▶ EMERGENCY PREEMPT LIGHT DETECTOR AND CONFIRMATION BEACON
  - ⊙ PEDESTRIAN PUSH BUTTON
  - |   |
|---|
| ↓ |
| ↑ |

 PEDESTRIAN SIGNAL HEAD
  - ⊙ LUMINAIRE, SODIUM VAPOR 250 W, HPS
  - ⊙ VIDEO DETECTION CAMERA
  - ⊙ VIDEO SURVEILLANCE CAMERA

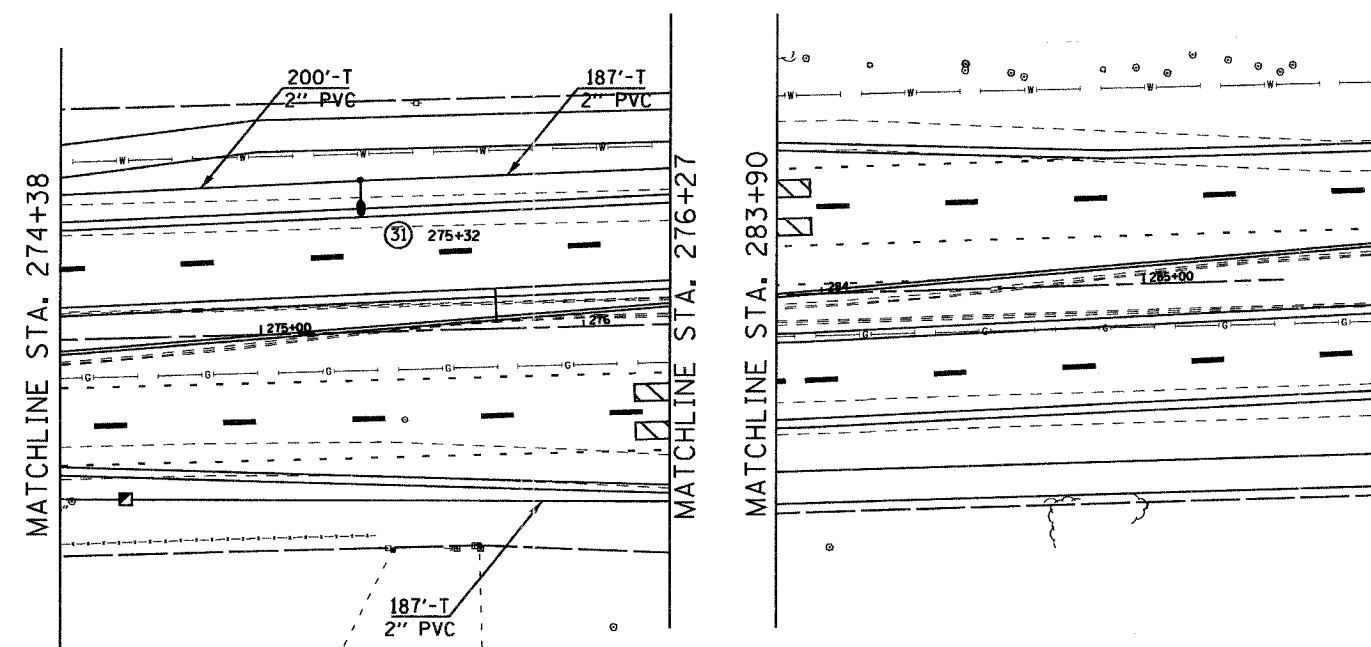
ROUTE	SECTION	COUNTY	TOTAL SHEETS	SHEET NO.
303	03-00520-00-WR	WINNEBAGO	254	187
STA. TO STA.		ILLINOIS FED. AID PROJECT		



MATCHLINE STA. 18+84



MATCHLINE STA. 13+89



MATCHLINE STA. 274+38

MATCHLINE STA. 276+27

MATCHLINE STA. 283+90

- LEGEND**
- STEEL COMBINATION MAST ARM ASSEMBLY AND POLE
  - PEDESTRIAN PUSH BUTTON
  - PEDESTRIAN SIGNAL HEAD
  - VIDEO DETECTION CAMERA
  - TRAFFIC SIGNAL HEAD
  - EMERGENCY VEHICLE LIGHT DETECTOR

"Note: Lighting items are shown for information only. These items will be bid as part of a separate project."

*Added 6.9.06*

RTE.	SECTION	COUNTY	TOTAL SHEETS	SHEET NO.
303	03-00520-00-WR	WINNEBAGO	254	188
STA.	TO STA.			
FED. ROAD DIST. NO.	ILLINOIS FED. AID PROJECT			

MATCHLINE STA. 18+84

**REMOVE EXISTING TRAFFIC SIGNAL EQUIPMENT**

- NW CORNER  
MAST ARM ASSEMBLY AND BASE, HANDHOLE, CONTROLLER AND CONTROLLER BASE, 2 MAST ARM MOUNTED SIGNAL HEADS AND 2 BRACKET MOUNTED SIGNAL HEADS
- NE CORNER  
MAST ARM ASSEMBLY AND BASE, HANDHOLE, PED PUSH BUTTON POST AND BASE, 1 PEDESTRIAN SIGNAL HEAD, 2 MAST ARM MOUNTED SIGNAL HEADS, 2 BRACKET MOUNTED SIGNAL HEADS
- SW CORNER  
MAST ARM ASSEMBLY AND BASE, HANDHOLE, 2 BRACKET MOUNTED SIGNAL HEADS, 2 MAST ARM MOUNTED SIGNAL HEADS
- SE CORNER  
MAST ARM ASSEMBLY AND BASE, HANDHOLE, 1 PEDESTRIAN SIGNAL HEAD, 2 BRACKET MOUNTED SIGNAL HEADS AND 2 MAST ARM MOUNTED SIGNAL HEADS
- MEDIANS  
8 HANDHOLES

