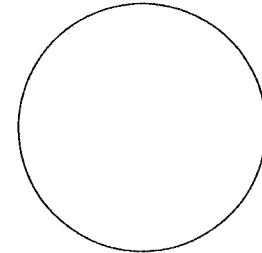
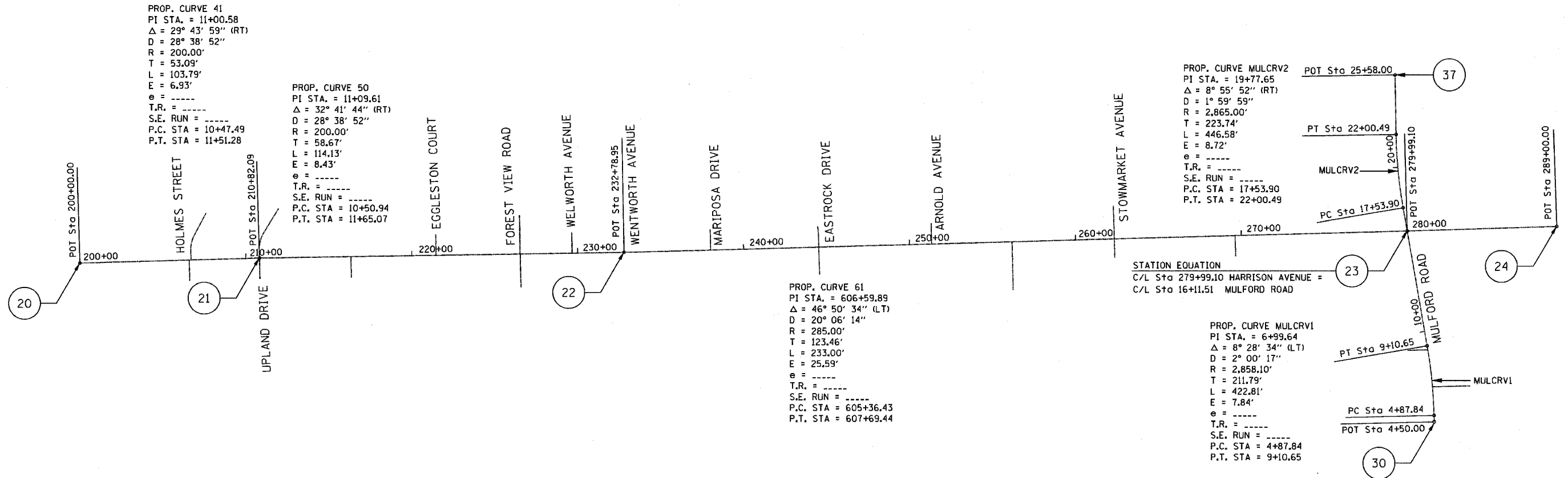
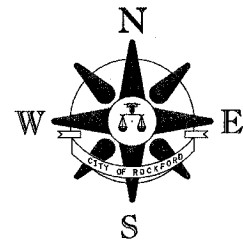
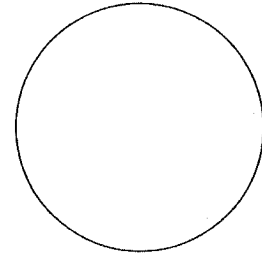


F.A. RTE.	SECTION	COUNTY	TOTAL SHEETS	SHEET NO.
303	D3-00520-00-WR	WINNEBAGO	254	22
STA.		TO STA.		
FED. ROAD DIST. NO.		ILLINOIS FED. AID PROJECT		

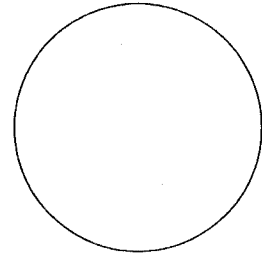
HORIZONTAL & VERTICAL CONTROL



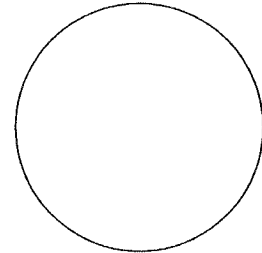
Traverse Station No. 20
P.K. Nail
P.O.T. C/L Sta 200+00.00
HARRISON AVENUE.
N 2,031,396.4190
E 2,604,650.9870



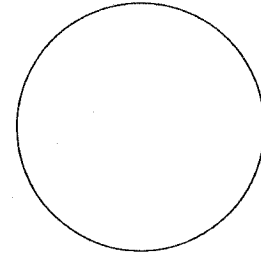
Traverse Station No. 21
P.K. Nail
P.O.T. C/L Sta 210+82.09
HARRISON AVENUE
N 2,031,426.2970
E 2,605,732.6640



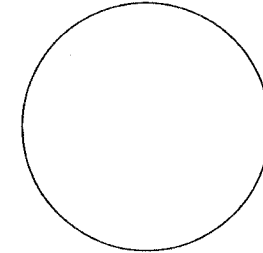
Traverse Station No. 22
P.K. NAIL
P.O.T. C/L Sta 232+78.95
HARRISON AVENUE.
N 2,031,461.4880
E 2,607,929.2440



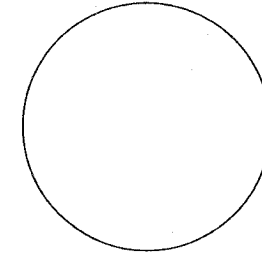
Traverse Station No. 23
P.K. NAIL
P.O.T. C/L Sta 279+99.10
HARRISON AVENUE.
N 2,031,588.2980
E 2,612,647.6870



Traverse Station No. 24
P.K. NAIL
P.O.T. C/L Sta 289+00.00
HARRISON AVENUE.
N 2,031,616.7760
E 2,613,548.1350



Traverse Station No. 30
P.K. NAIL
P.O.T. C/L Sta 4+50.00
MULFORD ROAD
N 2,030,439.5270
E 2,612,809.7110



Traverse Station No. 37
P.K. Nail
P.O.T. C/L Sta 25+58.00
MULFORD ROAD
N 2,032,530.2300
E 2,612,575.8010