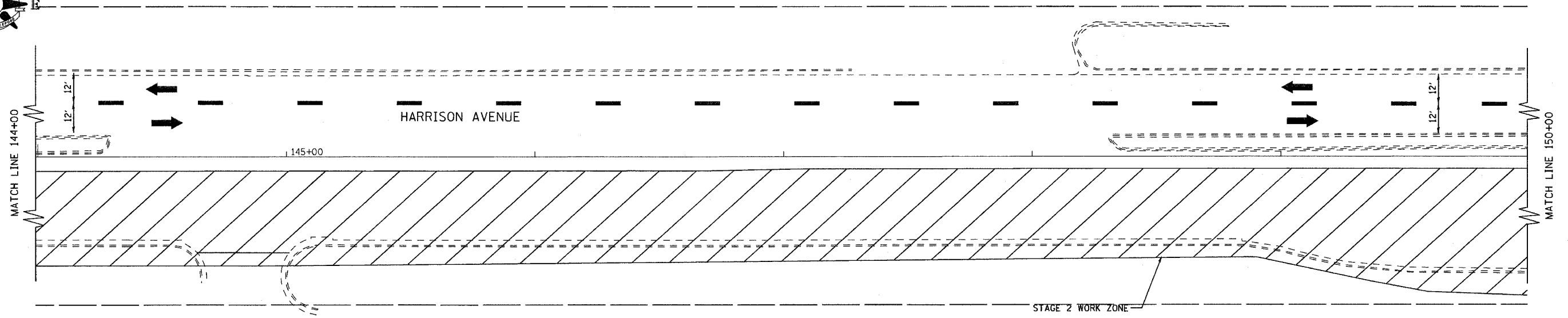


F.A. RTE.	SECTION	COUNTY	TOTAL SHEETS	SHEET NO.
303	03-00520-00-WR	WINNEBAGO	254	61
STA. 200+00 TO STA. 206+00				
FED. ROAD DIST. NO.	ILLINOIS	FED. AID PROJECT		



PLAN	DESIGNED	DATE
	PLOTTED	
	ALIGNMENT CHECKED	
	NOTES CHECKED	
	CAD FILE NAME	
	NO.	

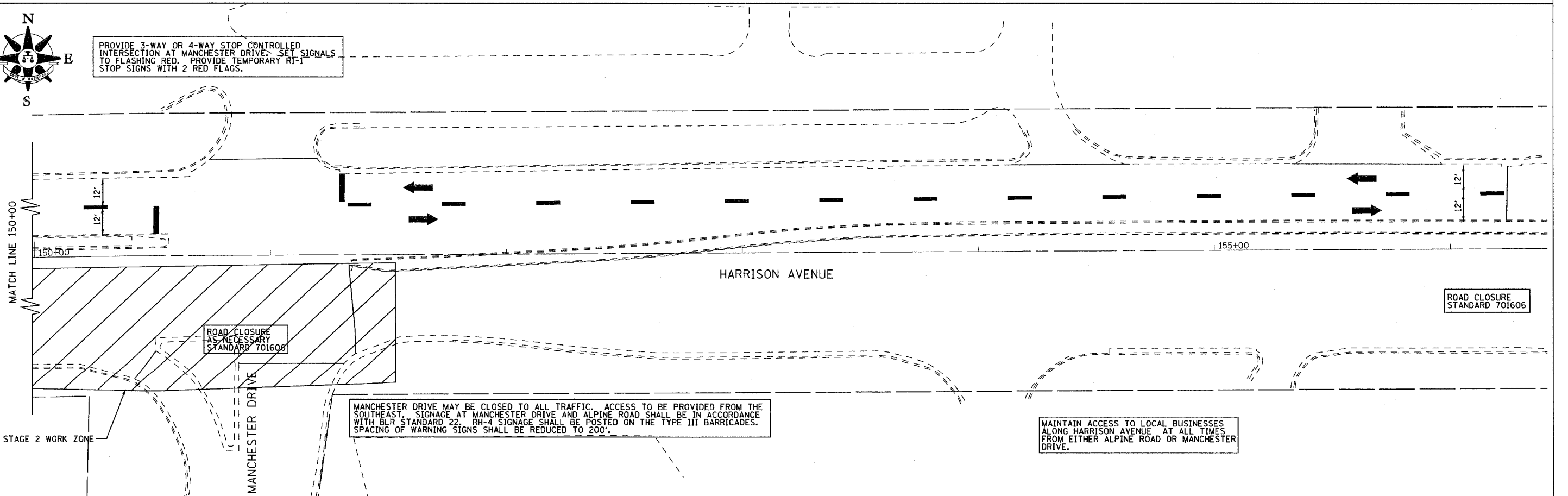


MAINTAIN ACCESS TO LOCAL RESIDENCES ALONG HARRISON AVENUE AT ALL TIMES.

PROFILE	DESIGNED	DATE
	PLOTTED	
	GRAPHS CHECKED	
	STRUCTURE NOTATION OK'D	
	NO.	



PROVIDE 3-WAY OR 4-WAY STOP CONTROLLED INTERSECTION AT MANCHESTER DRIVE. SET SIGNALS TO FLASHING RED. PROVIDE TEMPORARY R1-1 STOP SIGNS WITH 2 RED FLAGS.



ROAD CLOSURE AS NECESSARY STANDARD 701608

MANCHESTER DRIVE MAY BE CLOSED TO ALL TRAFFIC. ACCESS TO BE PROVIDED FROM THE SOUTHEAST. SIGNAGE AT MANCHESTER DRIVE AND ALPINE ROAD SHALL BE IN ACCORDANCE WITH BLR STANDARD 22. RH-4 SIGNAGE SHALL BE POSTED ON THE TYPE III BARRICADES. SPACING OF WARNING SIGNS SHALL BE REDUCED TO 200'.

MAINTAIN ACCESS TO LOCAL BUSINESSES ALONG HARRISON AVENUE AT ALL TIMES FROM EITHER ALPINE ROAD OR MANCHESTER DRIVE.

ROAD CLOSURE STANDARD 701606