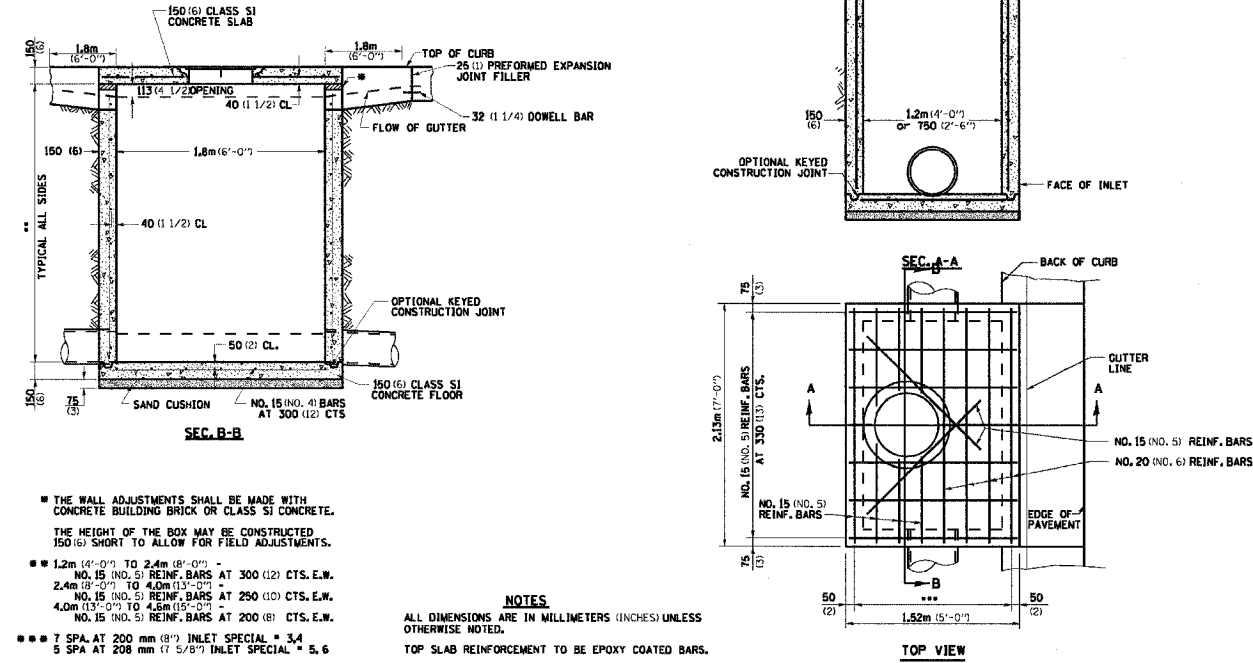


SECTION	COUNTY	TOTAL SHEETS	SHEET NO.
303	WINNEBAGO	254	199
TO STA.			
FED. ROAD DIST. NO. ILLINOIS FED. AID PROJECT			

INLET SPECIAL NO. 3, 4, 5, 6 REINFORCEMENT DETAIL



- THE WALL ADJUSTMENTS SHALL BE MADE WITH CONCRETE BUILDING BRICK OR CLASS SI CONCRETE. THE HEIGHT OF THE BOX MAY BE CONSTRUCTED 150 (6) SHORT TO ALLOW FOR FIELD ADJUSTMENTS.
- 1.2m (4'-0") TO 2.4m (8'-0") NO. 15 (NO. 5) REINFORCING BARS AT 300 (12) CTS. E.W.
- 2.4m (8'-0") TO 4.0m (13'-0") NO. 15 (NO. 5) REINFORCING BARS AT 250 (10) CTS. E.W.
- 4.0m (13'-0") TO 4.6m (15'-0") NO. 15 (NO. 5) REINFORCING BARS AT 200 (8) CTS. E.W.
- 7 SPA. AT 200 mm (8") INLET SPECIAL = 3, 4
- 5 SPA. AT 208 mm (7 5/8") INLET SPECIAL = 5, 6

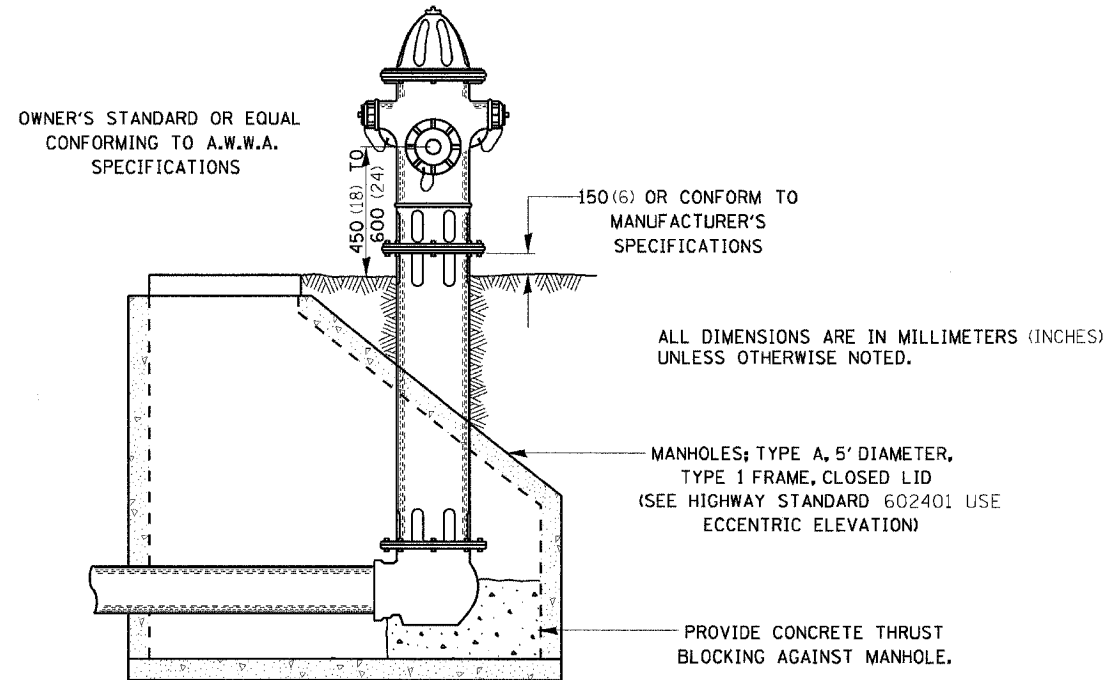
NOTES
ALL DIMENSIONS ARE IN MILLIMETERS (INCHES) UNLESS OTHERWISE NOTED.
TOP SLAB REINFORCEMENT TO BE EPOXY COATED BARS.

INLET SPECIAL NO. 3, 4, 5, 6 REINFORCEMENT DETAIL 79.4e

REVISED 11-9-04

PLOT DATE = Wed Dec 15 15:09:27 2004
FILE NAME = C:\projects\problems\025\standards\ref
REFERENCE = AREFA

TYPICAL HYDRANT INSTALLATION

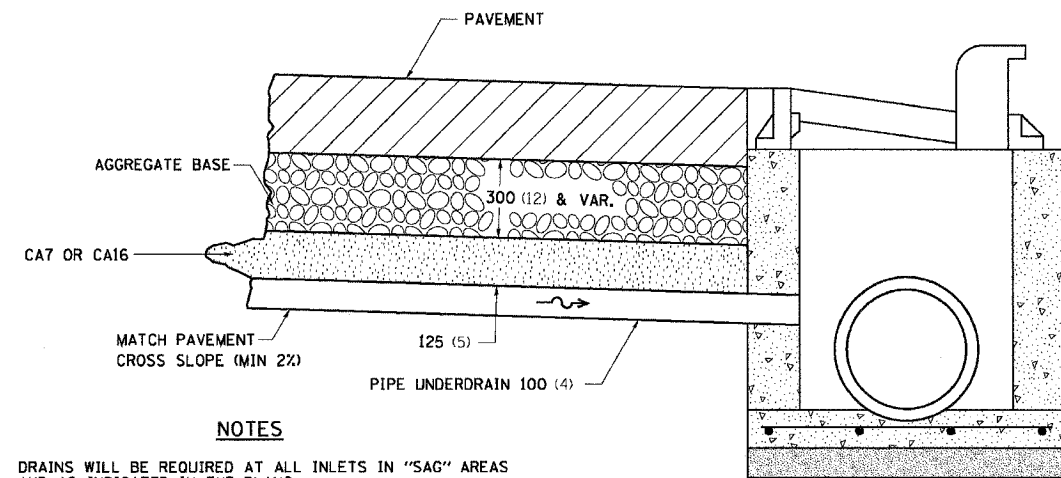


TYPICAL HYDRANT INSTALLATION 81.4

REVISED 1-8-96

PLOT DATE = Wed Dec 15 15:09:33 2004
FILE NAME = C:\projects\problems\025\standards\ref
REFERENCE = AREFA

DRAIN FOR AGGREGATE BASES IN URBAN AREAS



- NOTES**
- DRAINS WILL BE REQUIRED AT ALL INLETS IN "SAG" AREAS AND AS INDICATED IN THE PLANS.
 - THIS WORK SHALL BE COMPLETED ACCORDING TO SECTION 601 OF THE STANDARD SPECIFICATIONS.
 - THIS WORK WILL BE PAID FOR AT THE CONTRACT UNIT CA7 OR CA16 AND THE CONNECTION TO THE INLET. DIAMETER SPECIFIED WHICH PRICE SHALL INCLUDE THE PRICE PER METER (FOOT) FOR PIPE UNDERDRAINS OF THE
 - ALL DIMENSIONS ARE IN MILLIMETERS (INCHES) UNLESS OTHERWISE NOTED.

DRAIN FOR AGGREGATE BASES IN URBAN AREAS 88.4

REVISED 4-7-99

PLOT DATE = Wed Dec 15 15:09:41 2004
FILE NAME = C:\projects\problems\025\standards\ref
REFERENCE = AREFA