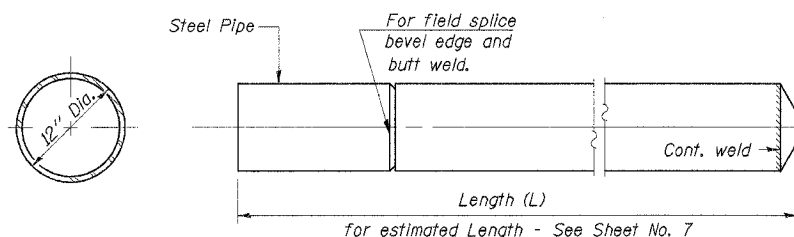


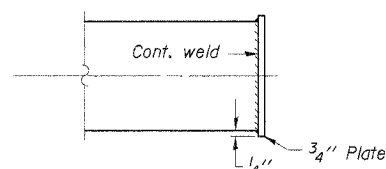
ROUTE NO.	SECTION	COUNTY	TOTAL SHEETS	SHEET NO.
T.R. 227	94-24122-00-BR	IROQUOIS	15	8
ROAD DIST.		ILLINOIS	RIDGELAND	

CONTRACT NO. 87298

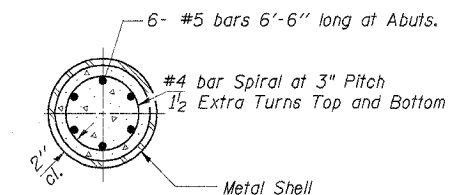
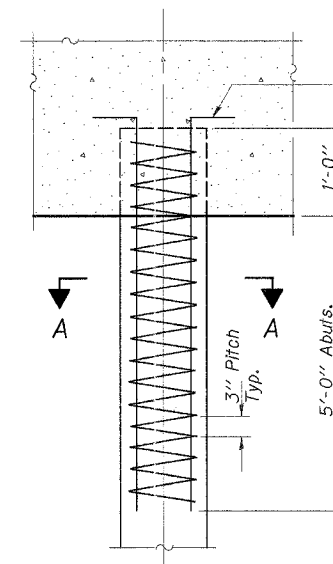
Notes: Driving and bearing ends of pipe shall be cut square.
The thickness of the shell shall be 0.1793 inches with a tolerance of 5%. The shell shall be in accordance with Article 1006.05(a) of the Standard Specifications.



DETAIL OF CYLINDRICAL STEEL SHELL FOR CAST IN PLACE CONCRETE PILES



OPTIONAL FLAT END



SECTION A-A

The cost of Reinforcement is incidental to the cost of furnishing piles.

DETAIL OF REINFORCEMENT FOR METAL SHELLS

DETAIL OF METAL SHELL FOR CAST IN PLACE CONCRETE PILES

DESIGNED	S.F.M.
CHECKED	F.J.S.
DRAWN	S.A.P. & J.P.S.
CHECKED	S.F.M.

CONCRETE PILE DETAILS

SECTION 94-24122-00-BR
RIDGELAND ROAD DISTRICT
IROQUOIS COUNTY
STA. 15+03

4440 ASH GROVE
SPRINGFIELD, IL 62711
(217) 793-8600
oasinc@famvid.com

OZYURT AND STONE, INC.
CONSULTING ENGINEERS

JOB NO.: 0405
FILE: METAL_HJDN
DATE: 10-07-04