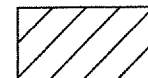
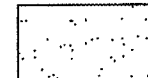
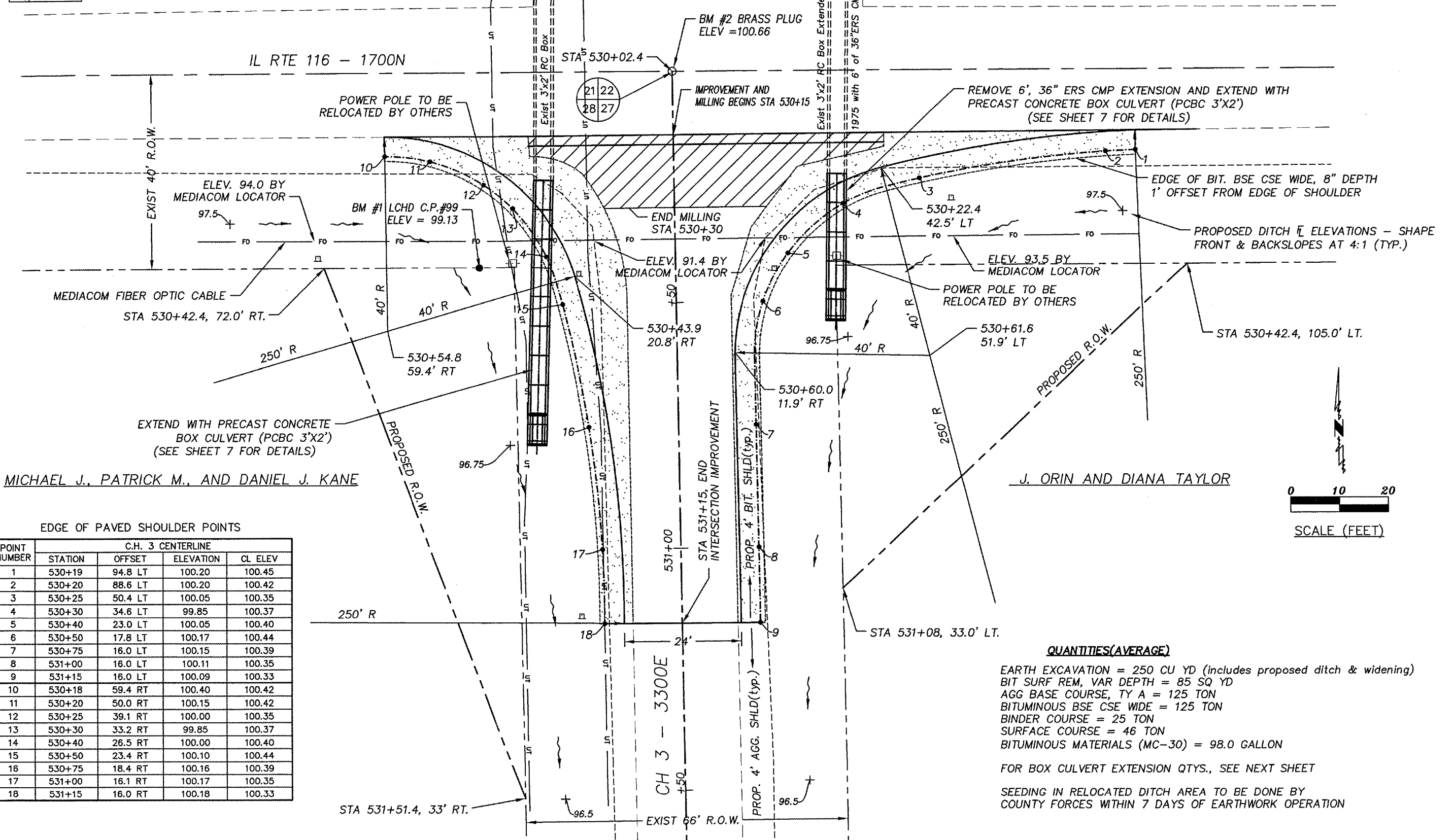


ROUTE NO.	SECTION	COUNTY	TOTAL SHEETS	SHEET NO.
343 & 1362	01-00025-04-RS	LIVINGSTON	12	6

PROJECT NO. SR-355(119)

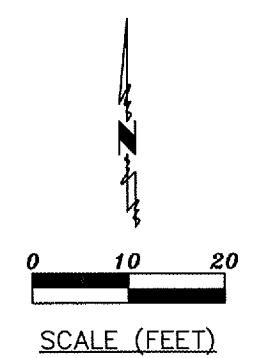
 BITUMINOUS SURFACE REMOVAL, VARIABLE DEPTH = 85 SQ YD

 AGG BASE COURSE, TY A = 125 TON (use to backfill box culv. also)
BITUMINOUS BASE COURSE WIDENING = 125 TON



MICHAEL J., PATRICK M., AND DANIEL J. KANE

J. ORIN AND DIANA TAYLOR



EDGE OF PAVED SHOULDER POINTS

POINT NUMBER	C.H. 3 CENTERLINE			
	STATION	OFFSET	ELEVATION	CL ELEV
1	530+19	94.8 LT	100.20	100.45
2	530+20	88.6 LT	100.20	100.42
3	530+25	50.4 LT	100.05	100.35
4	530+30	34.6 LT	99.85	100.37
5	530+40	23.0 LT	100.05	100.40
6	530+50	17.8 LT	100.17	100.44
7	530+75	16.0 LT	100.15	100.39
8	531+00	16.0 LT	100.11	100.35
9	531+15	16.0 LT	100.09	100.33
10	530+18	59.4 RT	100.40	100.42
11	530+20	50.0 RT	100.15	100.42
12	530+25	39.1 RT	100.00	100.35
13	530+30	33.2 RT	99.85	100.37
14	530+40	26.5 RT	100.00	100.40
15	530+50	23.4 RT	100.10	100.44
16	530+75	18.4 RT	100.16	100.39
17	531+00	16.1 RT	100.17	100.35
18	531+15	16.0 RT	100.18	100.33

QUANTITIES(AVERAGE)

EARTH EXCAVATION = 250 CU YD (includes proposed ditch & widening)
 BIT SURF REM, VAR DEPTH = 85 SQ YD
 AGG BASE COURSE, TY A = 125 TON
 BITUMINOUS BSE CSE WIDE = 125 TON
 BINDER COURSE = 25 TON
 SURFACE COURSE = 46 TON
 BITUMINOUS MATERIALS (MC-30) = 98.0 GALLON

FOR BOX CULVERT EXTENSION QTYS., SEE NEXT SHEET

SEEDING IN RELOCATED DITCH AREA TO BE DONE BY COUNTY FORCES WITHIN 7 DAYS OF EARTHWORK OPERATION

\\lchd2000server\lch\cowork\ROAD Projects\00025RS4-Chatk&d-North\Planning\Plans\Intersect-CH3-IL116.dwg, 3/30/2006 12:38:46 PM