

**INDEX OF SHEETS**

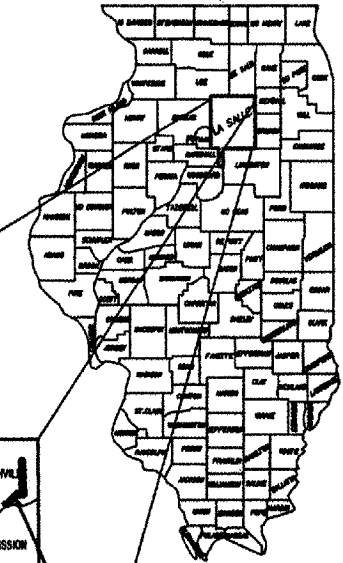
1. COVER
2. TYPICAL SECTION
3. SCHEDULES
4. PLAN SHEET STA. 10+00 TO STA. 128+00
5. PLAN SHEET STA. 127+00 TO STA. 244+00
6. PLAN SHEET STA. 243+00 TO STA. 319+92
7. DETAILS

STATE OF ILLINOIS  
**DEPARTMENT OF TRANSPORTATION**  
**LA SALLE COUNTY**

PLANS FOR PROPOSED  
**FEDERAL-AID SECONDARY PROJECT**  
**F.A.S. ROUTE 259 (C.H. 3) SECTION 05-00237-01-RS**  
**PROJECT NO. SR-259 (109) JOB NO. C-93-055-06**

COUNTY	SECTION	HWY. NO.	SHEET NO.
LASALLE	05-00237-01-RS	3	1 of 7

CONTRACT NO. 87320



MENOTA	MERIDEN	EARL	ADAMS	NORTHVILLE
TROY GROVE	OPPER	FREEDOM	SERENA	MISSION
ORRICK	WALTHAM	WALLACE	DAVENEY	MILLER
NEW LASALLE	UTICA	OTTAWA	WENTLAND	MANKAS
DEER PARK	SOUTH OTTAWA	FALL RIVER		
EIEN	FARM RIDGE	GRAND RAPIDS	BROOKFIELD	
VERMILION				
HOPE	OSAGE	BRUCE	OTTER CREEK	ALLEN
	GROVELAND			

PROPOSED IMPROVEMENT

THESE PLANS WERE PREPARED BY ME OR BY A FULL-TIME MEMBER OF MY STAFF WORKING UNDER MY PERSONAL SUPERVISION

*Lawrence J. Kinzer* 3/29/06  
 LAWRENCE J. KINZER DATE

COUNTY ENGINEER  
 I.R.P.E. #62-40162 11-30-07 EXP.

THE ACCEPTANCE OF THIS PROJECT IS BASED ON THE MINIMUM DESIGN CRITERIA FOR A FEDERAL AID 3-R PROJECT

PASSED: 3/31 2006  
*Kenneth R. Ly*  
 DISTRICT ENGINEER OF ROADS AND STREETS

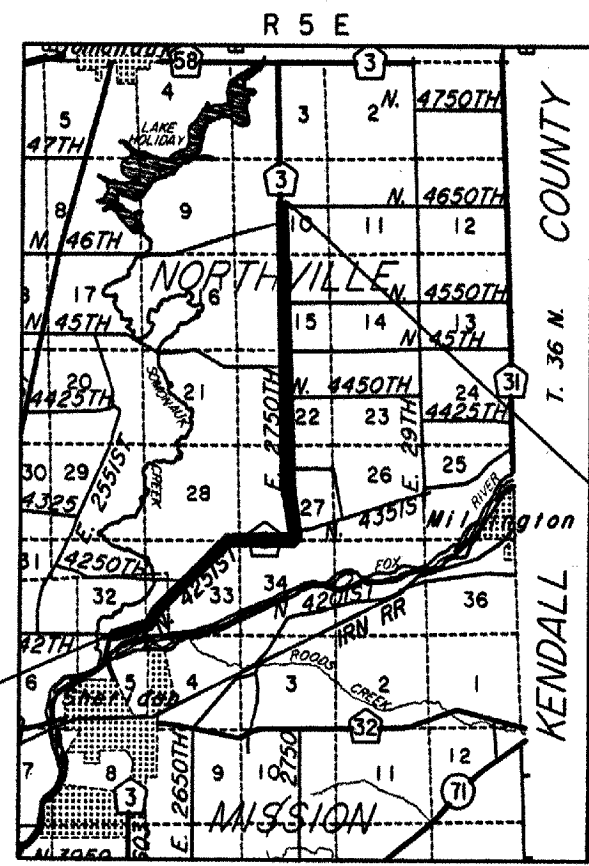
APPROVED: 3/31/06  
*Gregory M. ...*  
 DEPUTY DIRECTOR REGION 2 ENGINEER

STATE OF ILLINOIS  
 DEPARTMENT OF TRANSPORTATION



NOTE:  
 SEC. 05-00237-01-RS STA. 10+00 =  
 SEC. 98-00545-00-BR STA. 33+96.07

SEC. 05-00237-01-RS STA. 319+92  
 LOCATED APPROX. 150' NORTH OF  
 CENTERLINE OF N. 4650th ROAD



**PREVIOUS SECTIONS**

93(O), SM 93(O), 80(G), 81(G), 79-00093-00-RS,  
 88-00237-00-RS (SM), 88-00237-00-WR

SEC. 05-00237-01-RS  
 BEGINS STA. 11+60

GROSS AND NET LENGTH = 30,822 FT. = 5.838 MI.  
 2006 ADT = 2335 MAJOR COLLECTOR  
 2021 ADT = 2919 DESIGN SPEED = 50 MPH

**HIGHWAY STANDARDS**

- 542401 METAL END SECTIONS FOR PIPE CULVERTS
- 542406 METAL END SECTIONS FOR PIPE ARCHES

**TRAFFIC CONTROL STANDARDS**

- 701006-02 TYPICAL APPLICATION OF TRAFFIC CONTROL DEVICES
- 701011-01 TYPICAL APPLICATION OF TRAFFIC CONTROL DEVICES
- 701301-02 TYPICAL APPLICATION OF TRAFFIC CONTROL DEVICES
- 701306-01 TYPICAL APPLICATION OF TRAFFIC CONTROL DEVICES
- 702001-06 TYPICAL APPLICATION OF TRAFFIC CONTROL DEVICES

**SUMMARY OF QUANTITIES**

CODE	ITEM	UNIT	CONSTR. TYPE CODE 1000	QUANTITY
20400800	FURNISHED EXCAVATION	CU. YD.		462
X 25001000	SEEDING, CLASS 2 (SPECIAL)	ACRE		0.05
25100115	MULCH METHOD 2	ACRE		0.05
X 35600100	BIT. CONC. B.C. WID. 6"	SQ. YD.		2573
X 40600100	BITUMINOUS MATERIALS (PRIME COAT)	GAL.		16,373
40600300	AGGREGATE (PRIME COAT)	TON		164
X 40600980	BITUMINOUS SURFACE REMOVAL-BUTT JOINT	SQ. YD.		805
X 48101200	AGGREGATE SHOULDERS, TYPE B	TON		5200
X 54213870	STEEL END SECTIONS 15"	EACH		2.0
X 54213873	STEEL END SECTIONS 18"	EACH		8.0
X 54213879	STEEL END SECTIONS 24"	EACH		4.0
X 54215133	STL. END SEC. EQRS 18	EACH		6.0
X 54215136	STL. END SEC. EQRS 21	EACH		2.0
X 54215139	STL. END SEC. EQRS 24	EACH		2.0
67100100	MOBILIZATION	L SUM		1.0
X 70100460	TRAF. CONT.- PROT. 701306	L SUM		1.0
X 70100500	TRAF. CONT.- PROT. 701326	L SUM		1.0
X 70300100	SHORT-TERM PAVEMENT MARKING	FOOT		9250
X X4066514	P. BCSC SUPER "C" N-50	TON		5732
X X4066614	BCBC SUP. IL-19.0 N-50	TON		10,314
X X4066765	LEV. BIND. MM SUPER N-50	TON		4611
X SEE SPECIAL PROVISIONS				

 **CALL JULIE**  
 48 Hours Before You Dig.  
 1-800-892-0123