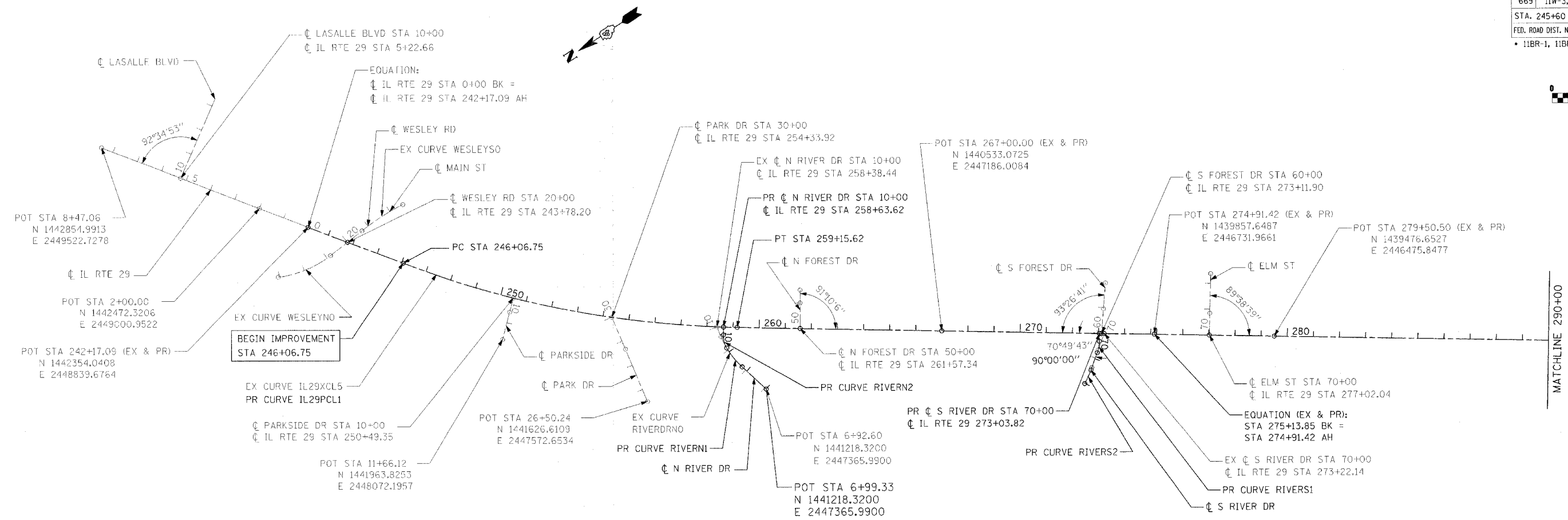
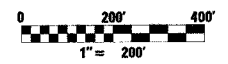


F.A.P. RTE.	SECTION	COUNTY	TOTAL SHEETS	SHEET NO.
669	11W-3,RS-8,*	TAZEWELL	442	61
STA. 245+60		TO STA.290+00		
FED. ROAD DIST. NO.		ILLINOIS	FED. AID PROJECT	
* 11BR-1, 11BR-2				



IL RTE 29	WESLEY ROAD/MAIN STREET		NORTH RIVER DRIVE
EXIST. CURVE IL29XCL5 PI STA. = 252+67.80 Δ = 19° 50' 00" (LT) D = 1° 30' 55" R = 3,781.15' T = 661.05' L = 1,308.87' E = 57.35' e = ---- T.R. = ---- S.E. RUN = ---- P.C. STA. = 246+06.75 P.T. STA. = 259+15.62	EXIST. CURVE WESLEYNO PI STA. = 18+09.65 Δ = 31° 52' 47" (LT) D = 14° 29' 28" R = 395.38' T = 112.92' L = 219.99' E = 15.81' e = ---- T.R. = ---- S.E. RUN = ---- P.C. STA. = 16+96.72 P.T. STA. = 19+16.71	EXIST. CURVE WESLEYSO PI STA. = 21+64.63 Δ = 12° 06' 19" (RT) D = 6° 30' 19" R = 880.78' T = 93.39' L = 186.09' E = 4.94' e = ---- T.R. = ---- S.E. RUN = ---- P.C. STA. = 20+71.24 P.T. STA. = 22+57.33	EXIST. CURVE RIVERDRNO PI STA. = 8+89.64 Δ = 25° 25' 07" (RT) D = 17° 51' 59" R = 320.69' T = 72.32' L = 142.27' E = 8.05' e = ---- T.R. = ---- S.E. RUN = ---- P.C. STA. = 8+17.32 P.T. STA. = 9+59.59

PROPOSED HORIZONTAL CURVE DATA

IL RTE 29				
PROP. CURVE IL29PCL1 PI STA. = 252+67.80 Δ = 19° 50' 00" (LT) D = 1° 30' 55" R = 3,781.15' T = 661.05' L = 1,308.87' E = 57.35' e = 2.1% T.R. = 84.00' S.E. RUN = 88.20' P.C. STA. = 246+06.75 P.T. STA. = 259+15.62	PROP. CURVE RIVERN1 PI STA. = 8+70.96 Δ = 16° 38' 48" (RT) D = 17° 51' 59" R = 320.69' T = 46.92' L = 93.17' E = 3.41' e = NC T.R. = N/A S.E. RUN = N/A P.C. STA. = 8+24.04 P.T. STA. = 9+17.21	PROP. CURVE RIVERN2 PI STA. = 9+44.36 Δ = 32° 59' 43" (RT) D = 62° 30' 31" R = 91.66' T = 27.15' L = 52.79' E = 3.94' e = N/C T.R. = N/A S.E. RUN = N/A P.C. STA. = 9+17.21 P.T. STA. = 9+70.00	PROP. CURVE RIVERS1 PI STA. = 69+47.74 Δ = 19° 10' 17" (LT) D = 42° 38' 50" R = 134.35' T = 22.69' L = 44.95' E = 1.90' e = NC T.R. = N/A S.E. RUN = N/A P.C. STA. = 69+25.05 P.T. STA. = 69+70.00	PROP. CURVE RIVERS2 PI STA. = 68+26.33 Δ = 9° 44' 59" (LT) D = 17° 11' 59" R = 333.12' T = 28.41' L = 56.69' E = 1.21' e = NC T.R. = N/A S.E. RUN = N/A P.C. STA. = 67+97.92 P.T. STA. = 68+54.60

HORIZONTAL CURVE COORDINATE TABLE

CURVE NO	ALIGNMENT POINT	N	E
IL 29 EXISTING			
IL29XCL5	PC	1442123.5963	2448525.4627
	PI	1441732.6520	2447992.4059
	PT	1441184.0388	2447623.6098
IL 29 PROPOSED			
IL29PCL1	PC	1442123.5963	2448525.4627
	PI	1441732.6520	2447992.4059
	PT	1441184.0388	2447623.6098
WESLEY ROAD EXISTING			
WESLEYNO	PC	1442555.4277	2448739.2470
	PI	1442453.9453	2448689.7159
	PT	1442341.6113	2448701.2527
WESLEYSO	PC	1442187.8907	2448717.0399
	PI	1442094.9888	2448726.5809
	PT	1442002.1518	2448716.4277
RIVER DRIVE EXISTING			
RIVERDRNO	PC	1441250.0874	2447486.5897
	PI	1441268.5102	2447556.5289
	PT	1441255.1298	2447627.6054
RIVER DRIVE PROPOSED			
RIVERN1	PC	1441250.0874	2447486.5897
	PI	1441262.0381	2447531.9587
	PT	1441260.4913	2447578.8497
RIVERN2	PC	1441260.4913	2447578.8497
	PI	1441259.5962	2447605.9819
	PT	1441244.0702	2447628.2507
RIVERS1	PC	1440079.4911	2446791.7862
	PI	1440061.3516	2446805.4147
	PT	1440048.6937	2446824.2444
RIVERS2	PC	1440183.8036	2446719.4320
	PI	1440158.5271	2446732.4048
	PT	1440135.8125	2446749.4707

SIDE ROAD COORDINATE TABLE

STATION EQUATION	N	E
CL LASALLE BLVD STA 10+00 & CL IL RTE 29 STA 5+22.66 (EX & PR)	1442663.1403	2449261.1369
CL WESLEY ROAD STA 20+00 & CL IL RTE 29 STA 243+78.20 (EX & PR)	1442258.7611	2448709.7614
CL PARKSIDE DR STA 10+00 & CL IL RTE 29 STA 250+49.35 (EX & PR)	1441841.5744	2448184.6746
CL PARK DR STA 30+00 & CL IL RTE 29 STA 254+33.92 (EX & PR)	1441565.6329	2447917.0518
CL N RIVER DR STA 10+00 & CL IL RTE 29 STA 258+63.62 (EX)	1441247.6528	2447667.3225
CL N RIVER DR STA 10+00 & CL IL RTE 29 STA 258+63.62 (PR)	1441226.9926	2447652.9156
CL N FOREST DR STA 50+00 & CL IL RTE 29 STA 261+57.34 (EX & PR)	1440983.4369	2447488.7586
CL S FOREST DR STA 60+00 & CL IL RTE 29 STA 273+11.90 (EX & PR)	1440025.2544	2446844.6362
CL S RIVER DR STA 70+00 & CL IL RTE 29 STA 273+22.14 (EX)	1440016.7540	2446838.9219
CL S RIVER DR STA 70+00 & CL IL RTE 29 STA 273+03.82 (PR)	1440031.9568	2446849.1418
CL ELM ST STA 70+00 & CL IL RTE 29 STA 277+02.04 (EX & PR)	1439682.8525	2446614.4622

REVISIONS	
NAME	DATE

ILLINOIS DEPARTMENT OF TRANSPORTATION

IL RTE 29
WESLEY RD TO IL RTE 98
ALIGNMENT PLAN

SCALE: VERT. _____
HORIZ. _____
DATE _____

DRAWN BY _____
CHECKED BY _____

PLT DATE = 4/19/2006
PLT SCALE = 2000/8000 = 1/4"
USER NAME = ehoughz