

F.A.P. RTE.	SECTION	COUNTY	TOTAL SHEETS	SHEET NO.
669	11W-3,RS-8,*	TAZEWELL	442	66
STA.		TO STA.247+50		
FED. ROAD DIST. NO.		ILLINOIS FED. AID PROJECT		
• 11BR-1, 11BR-2				

LEGEND

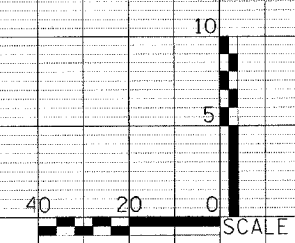
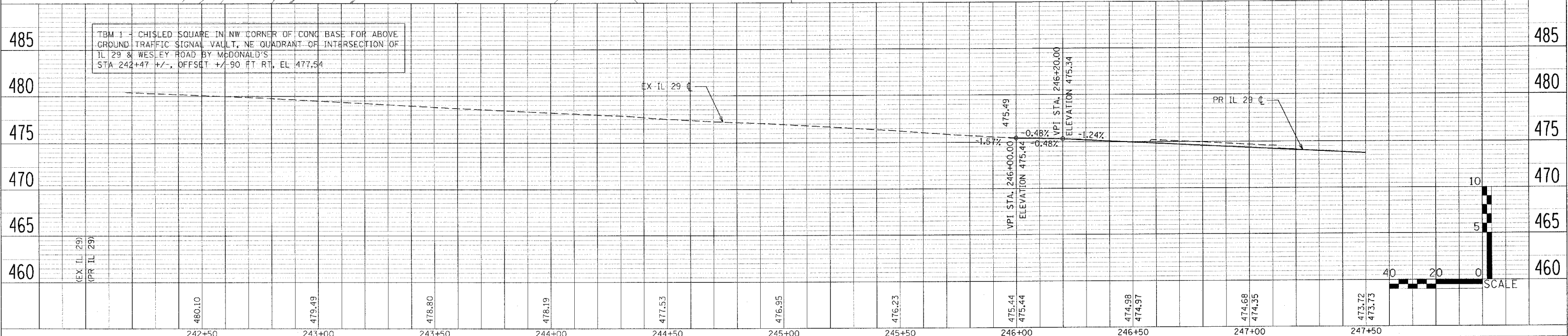
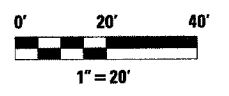
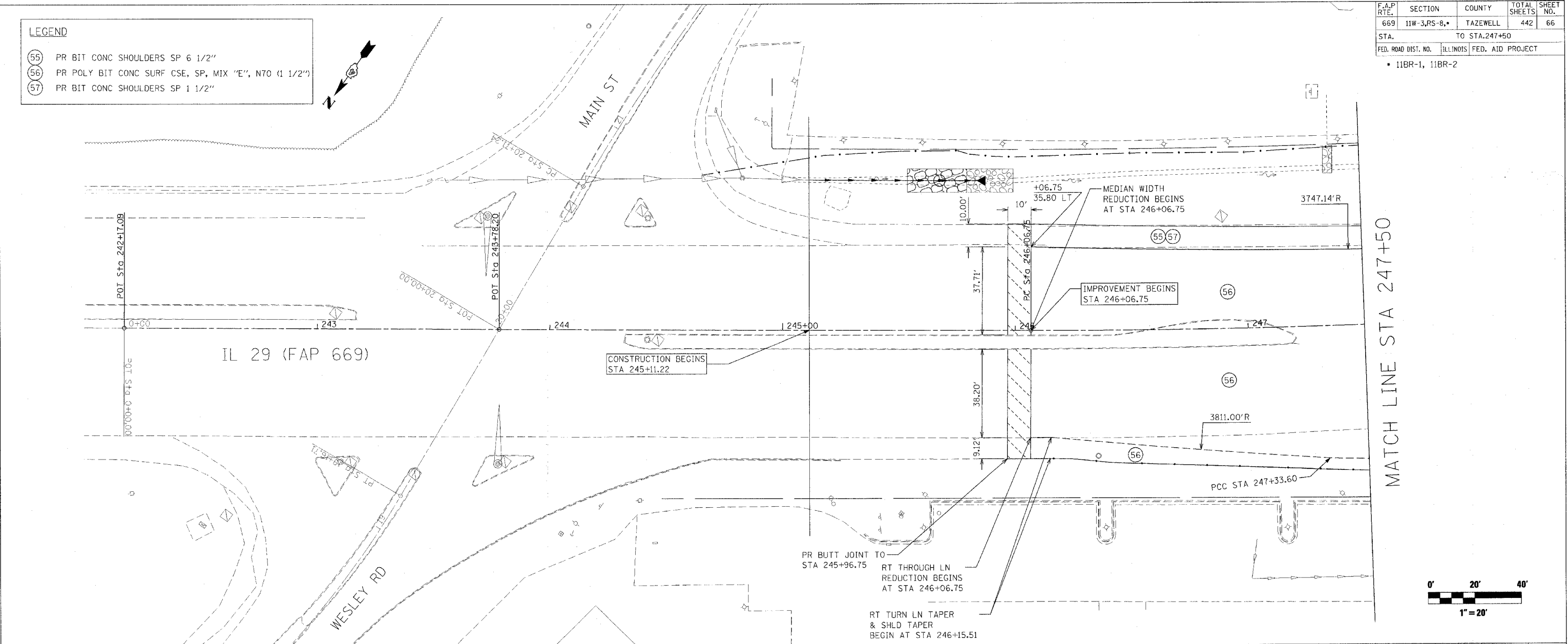
(55)	PR BIT CONC SHOULDERS SP 6 1/2"
(56)	PR POLY BIT CONC SURF CSE, SP, MIX "E", N70 (1 1/2")
(57)	PR BIT CONC SHOULDERS SP 1 1/2"

PLAN

DATE	BY

PROFILE

DATE	BY



TBM 1 - CHISELED SQUARE IN NW CORNER OF CONC BASE FOR ABOVE GROUND TRAFFIC SIGNAL VAULT, NE QUADRANT OF INTERSECTION OF IL 29 & WESLEY ROAD BY McDONALD'S STA 242+47 +/-, OFFSET +/- 90 FT RT, EL 477.54

PLAN & PROFILE

DATE: 4/18/2008
 FILE NAME: c:\pro\proj\11\28\plan\plan.dwg
 PLOT SCALE: 20.00000 / IN.
 USER NAME: shoup