

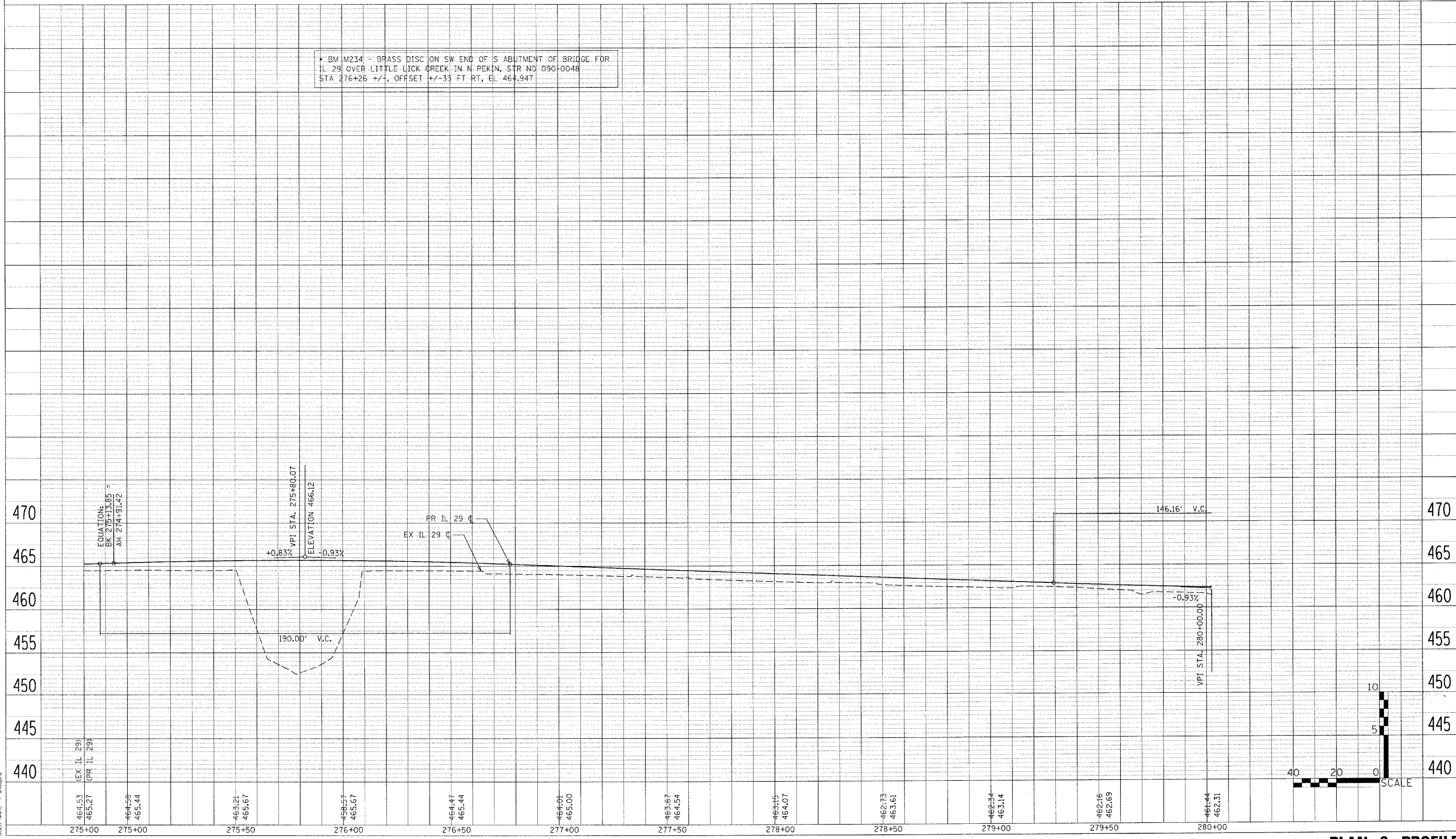
F.A.P. RTE.	SECTION	COUNTY	TOTAL SHEETS	SHEET NO.
669	11W-3,RS-8,*	TAZEWELL	442	76
STA. 275+00		TO STA.280+00		
FED. ROAD DIST. NO.		ILLINOIS FED. AID PROJECT		

* 11BR-1, 11BR-2

PLAN	SURVEYED	DATE
NO.	BY	
NOTE BOOK	BY	
	DATE	

PROFILE	SURVEYED	DATE
NO.	BY	
	DATE	

* BM M234 - BRASS DISC ON SW END OF S ABUTMENT OF BRIDGE FOR IL 29 OVER LITTLE LICK CREEK IN N PEKIN, STR NO 090-0048 STA 276+25 +/-, OFFSET +/-33 FT RT, EL 464.947



PLOT DATE = 4/18/2006
 FILE NAME = c:\p2\11w-3\pekin\chase.11\26\pr.dgn
 PLOT SCALE = 1/8" = 10'-0"
 USER NAME = ahpqhz