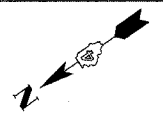
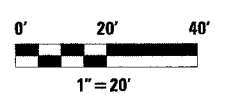
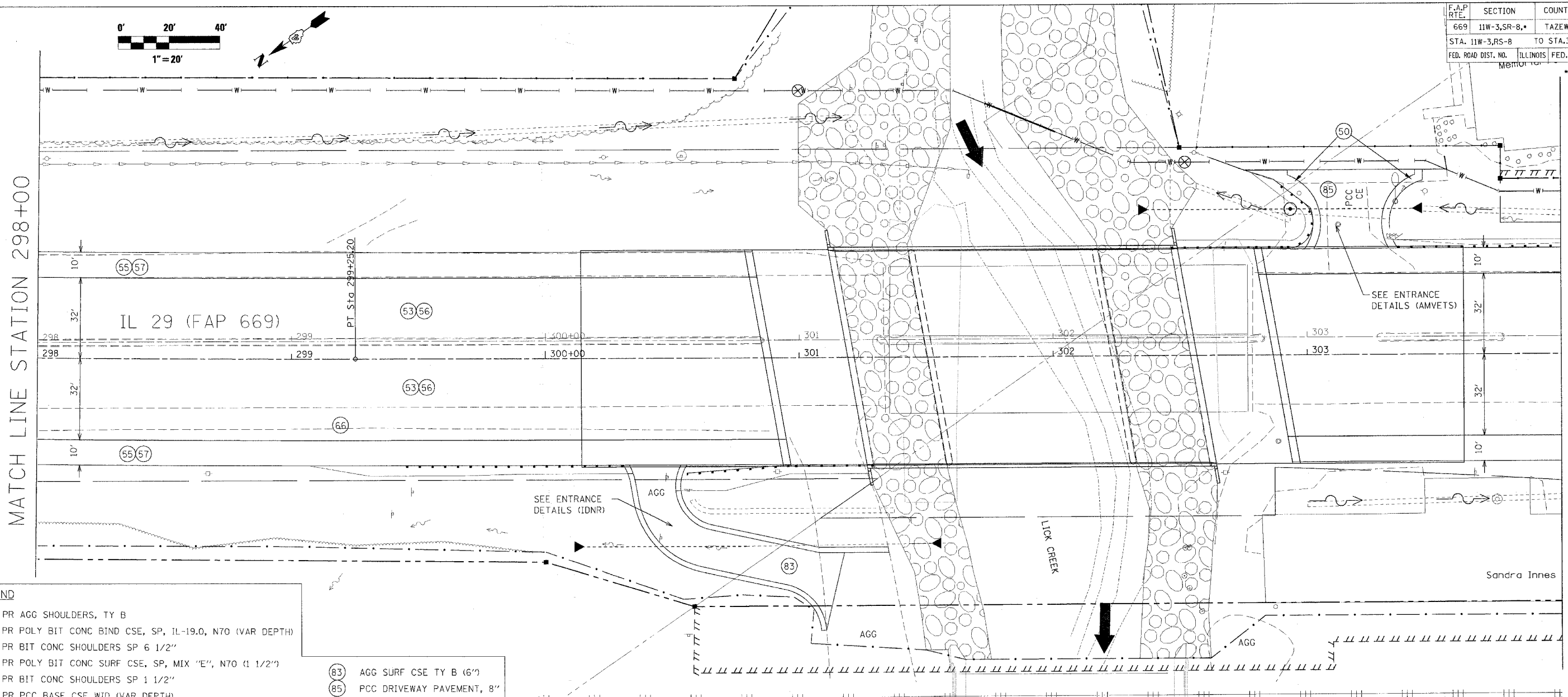


F.A.P. RTE.	SECTION	COUNTY	TOTAL SHEETS	SHEET NO.
669	11W-3,SR-8*	TAZEWELL	442	80
STA. 11W-3,RS-8		TO STA.304+00		
FED. ROAD DIST. NO.		ILLINOIS	FED. AID PROJECT	
MEMORANDUM		11BR-1, 11BR-2		



MATCH LINE STATION 298+00

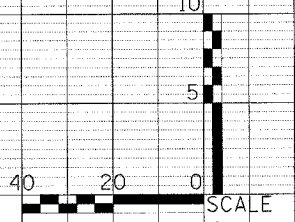
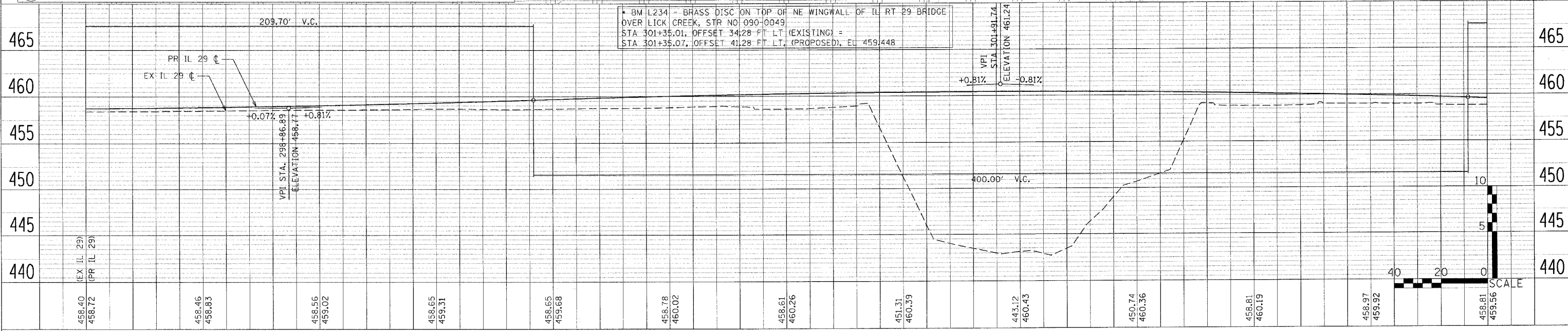
MATCH LINE STATION 304+00



LEGEND

(50)	PR AGG SHOULDERS, TY B	(83)	AGG SURF CSE TY B (6")
(53)	PR POLY BIT CONC BIND CSE, SP, IL-19.0, N70 (VAR DEPTH)	(85)	PCC DRIVEWAY PAVEMENT, 8"
(55)	PR BIT CONC SHOULDERS SP 6 1/2"		
(56)	PR POLY BIT CONC SURF CSE, SP, MIX "E", N70 (1 1/2")		
(57)	PR BIT CONC SHOULDERS SP 1 1/2"		
(66)	PR PCC BASE CSE WID (VAR DEPTH)		

* BM L234 - BRASS DISC ON TOP OF NE WINGWALL OF IL RT 29 BRIDGE OVER LICK CREEK, STR NO 090-0049
 STA 301+35.01, OFFSET 34.28 FT LT. (EXISTING) =
 STA 301+35.07, OFFSET 41.28 FT LT. (PROPOSED), EL 459.448



PLAN

DATE	
BY	
CHECKED	
DESIGNED	
NOTED	
APPROVED	
DATE	

PROFILE

DATE	
BY	
CHECKED	
DESIGNED	
NOTED	
APPROVED	
DATE	

PLOT DATE = 4/18/2006
 FILE NAME = c:\proje\ca\2\papak\in\phase_11\22b\h\p\plodgn
 PLOT SCALE = 20.0000 / 1"
 USER NAME = srauhp