

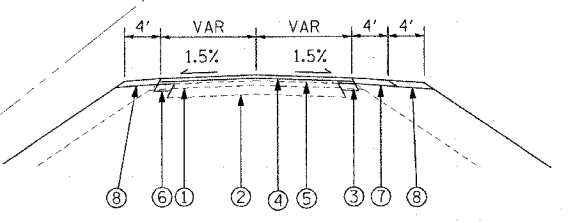
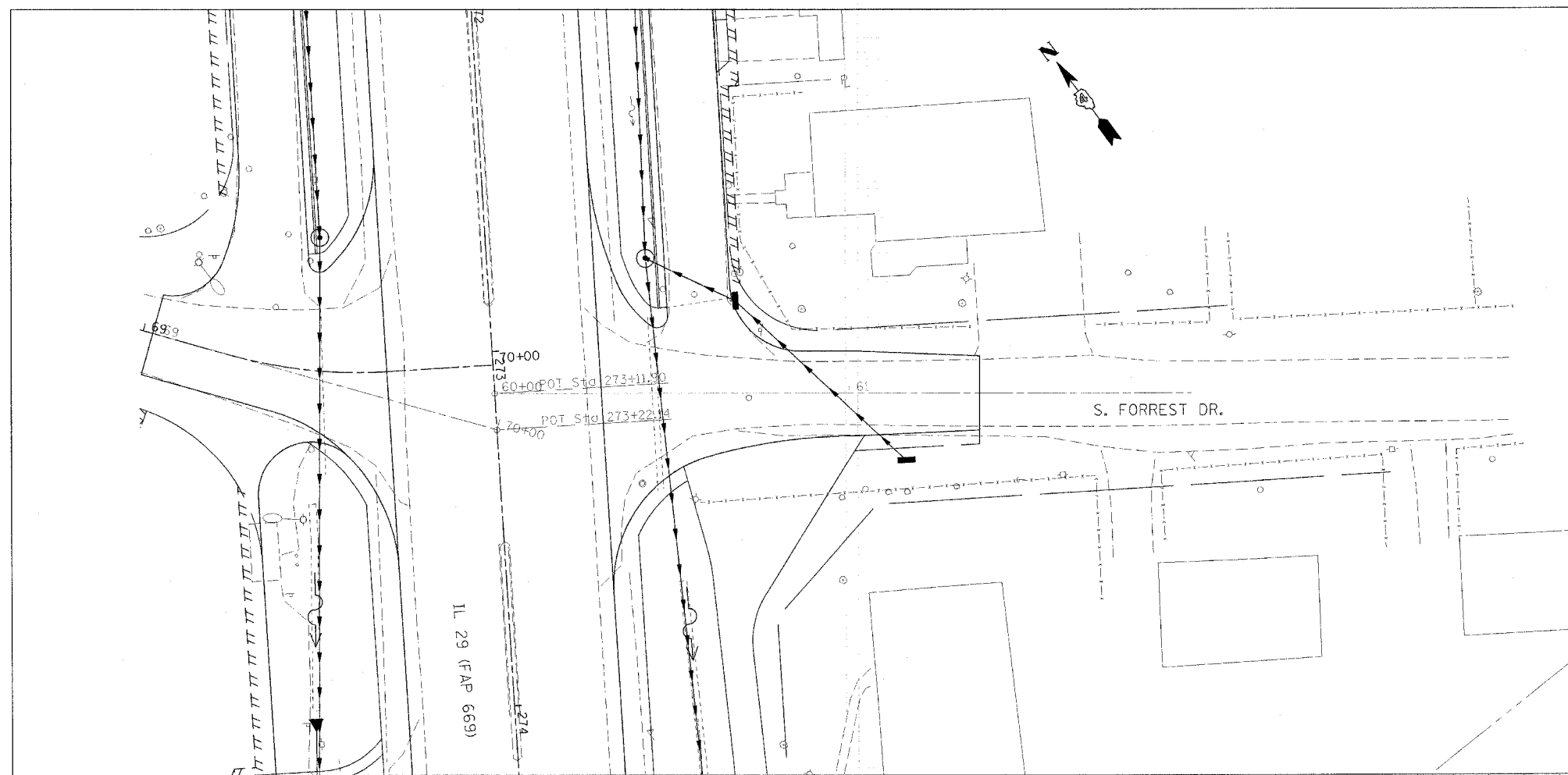
F.A.P. RTE.	SECTION	COUNTY	TOTAL SHEETS	SHEET NO.
669	11W-3,RS-8,*	TAZEWELL	442	91
STA.		TO STA.		
FED. ROAD DIST. NO.	ILLINOIS	FED. AID PROJECT		

• 11BR-1, 11BR-2

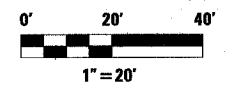
PLAN	REVISIONS	DATE
DESIGNED		
PLOTTED		
ALIGNED		
CHECKED		
NO.		
DATE		

PROFILE	REVISIONS	DATE
DESIGNED		
PLOTTED		
CHECKED		
NO.		
DATE		

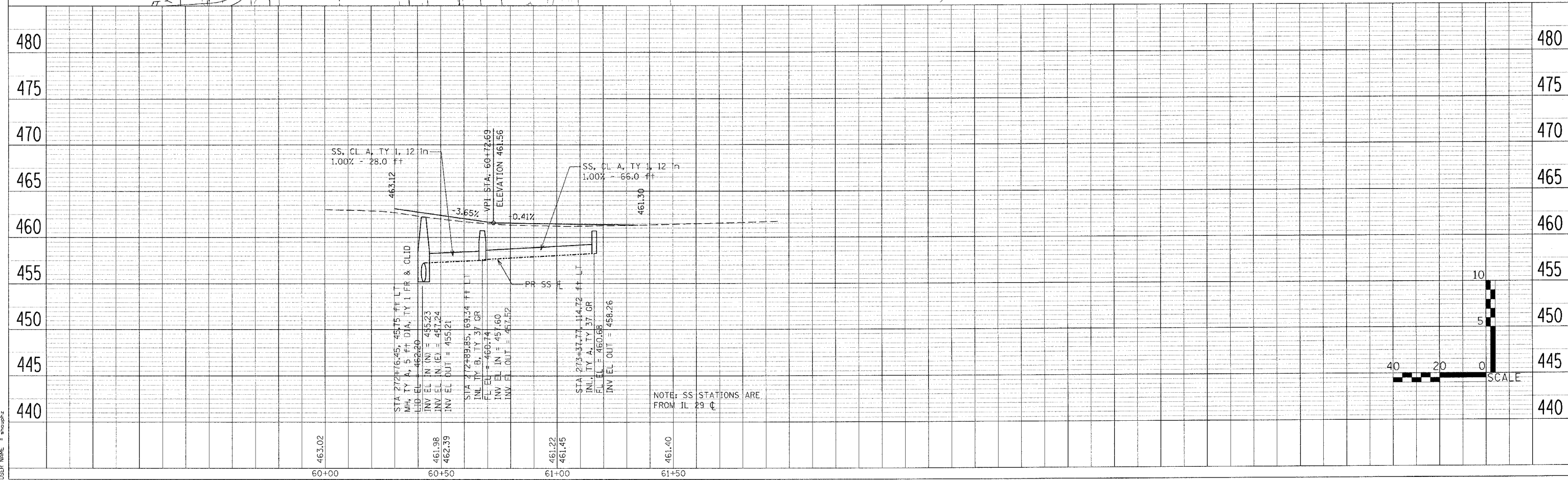
PLOT DATE = 4/18/2006  
 FILE NAME = c:\proj\669\11w-3\phase-11\asph-rd\91.dgn  
 USER NAME = shuch



- ① EXISTING BIT CONC SURF CSE
- ② EXISTING BIT CONC BASE CSE
- ③ EXISTING AGGREGATE SHOULDER
- ④ PROP BIT CONC SURF CSE, SUPER, MIX "C", N50 (1 1/2")
- ⑤ PROP BIT CONC BINDER CSE, SUPER, IL 19.0, N50 (VAR DEPTH)
- ⑥ PROP BIT CONC BASE CSE, SUPER 6 1/2"
- ⑦ PROP BIT CONC SHLDRS, SUPER 8"
- ⑧ PROP AGGREGATE SHOULDER, TYPE B



NOTE: SEE IL 29 MAINLINE PLAN & PROFILE SHEETS FOR ADDITIONAL INFORMATION



NOTE: SS STATIONS ARE FROM IL 29 C

