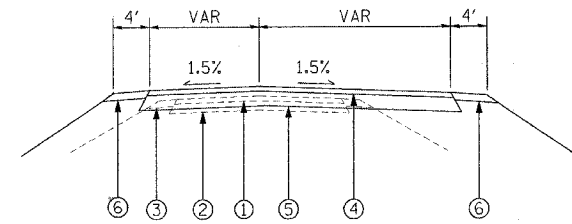


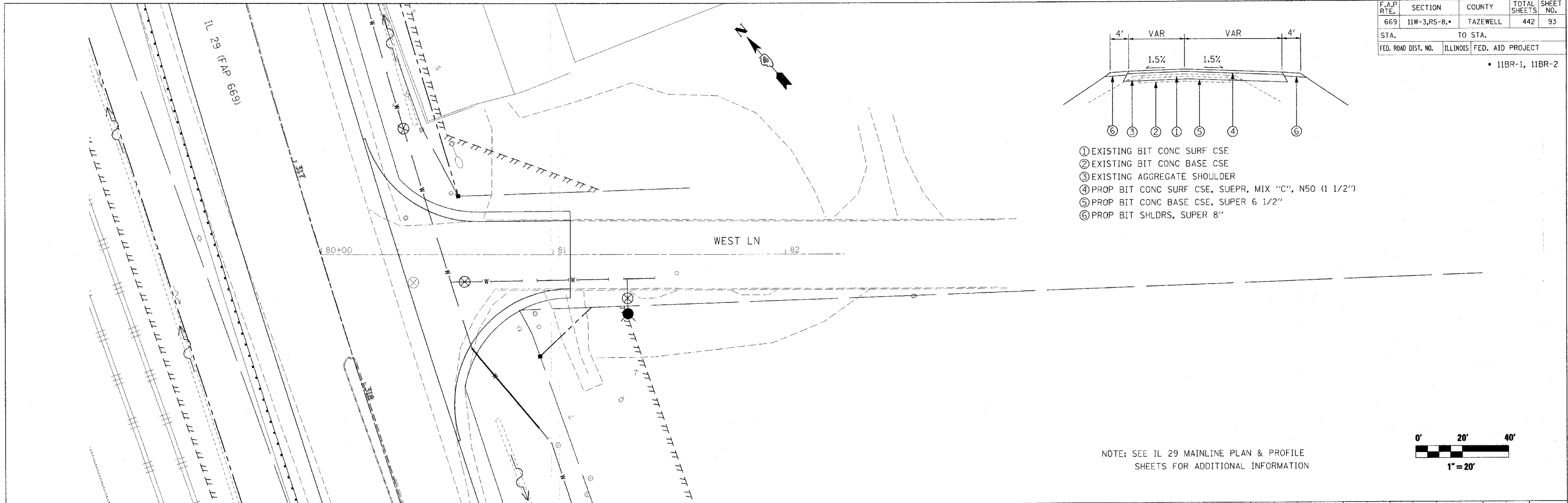
F.A.P. RTE.	SECTION	COUNTY	TOTAL SHEETS	SHEET NO.
669	11W-3,RS-8,*	TAZEWELL	442	93
STA.		TO STA.		
FED. ROAD DIST. NO.		ILLINOIS FED. AID PROJECT		

• 11BR-1, 11BR-2

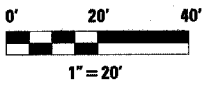


- ① EXISTING BIT CONC SURF CSE
- ② EXISTING BIT CONC BASE CSE
- ③ EXISTING AGGREGATE SHOULDER
- ④ PROP BIT CONC SURF CSE, SUEPR, MIX "C", N50 (1 1/2")
- ⑤ PROP BIT CONC BASE CSE, SUPER 6 1/2"
- ⑥ PROP BIT SHLDRS, SUPER 8"

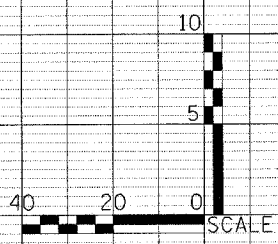
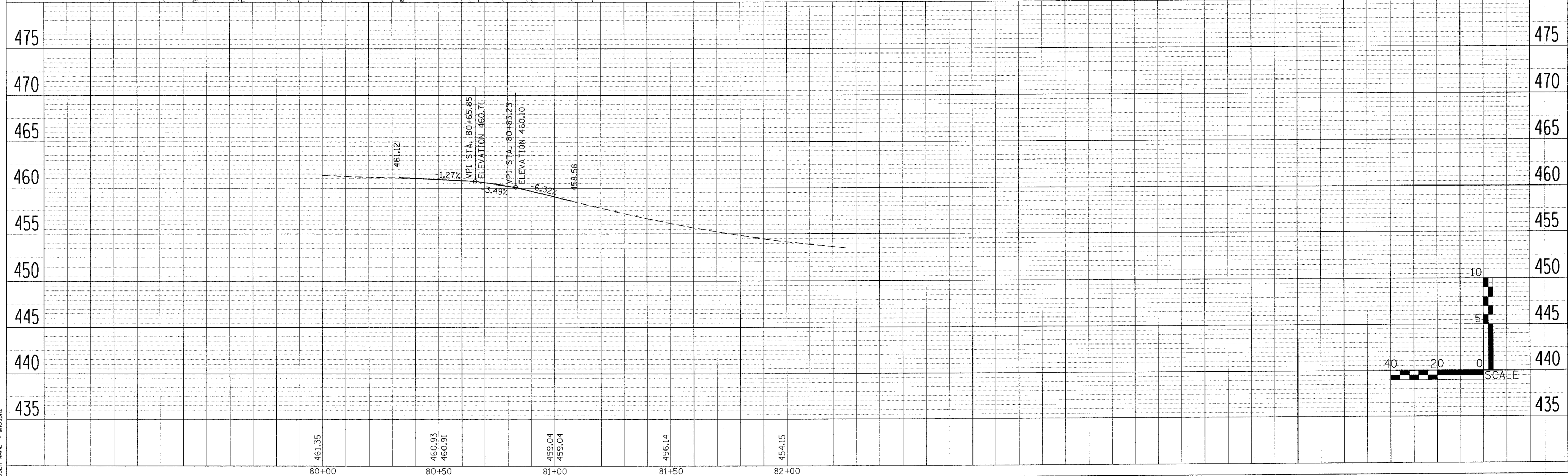
PLAN	DATE	BY
APPROVED		
NOTED		
NO. _____		
DATE FILE NAME		



NOTE: SEE IL 29 MAINLINE PLAN & PROFILE SHEETS FOR ADDITIONAL INFORMATION



PROFILE	DATE	BY
APPROVED		
NOTED		
NO. _____		
DATE FILE NAME		



PLOT DATE = 4/18/2008  
 FILE NAME = \\s1\share\p11\11w-3\11w-3-rs-8-11br-2.dwg  
 PLOT SCALE = 20.000000 / IN.  
 USER NAME = shouphz