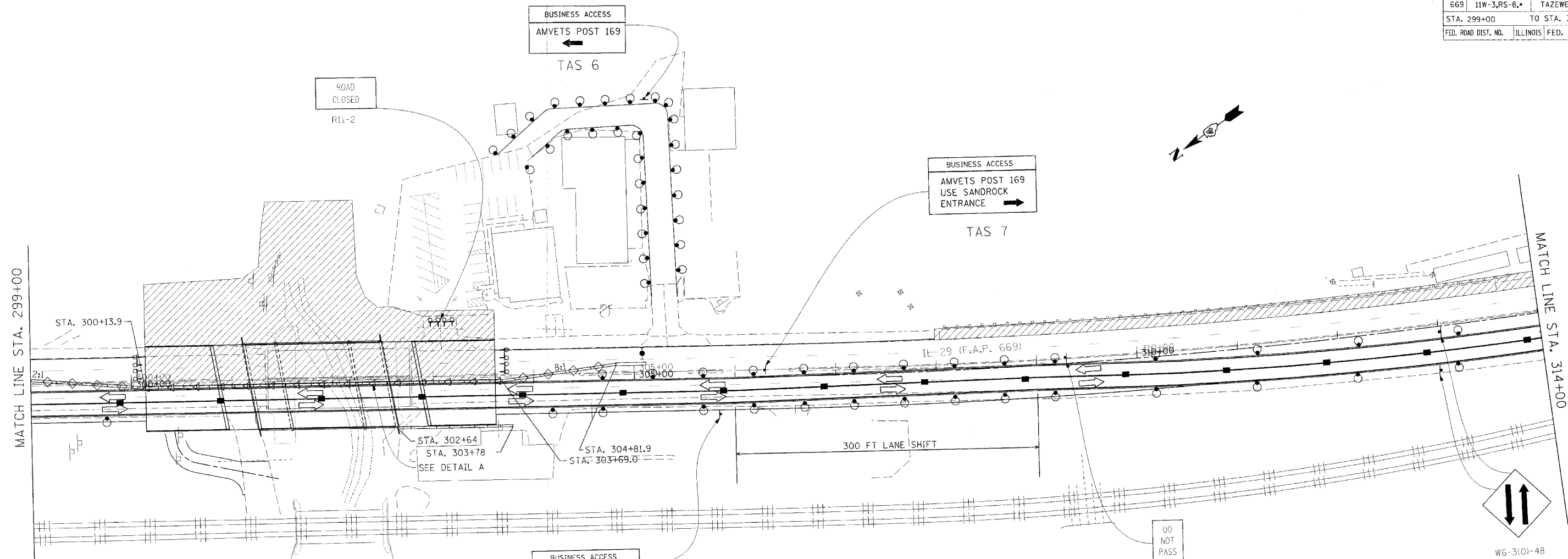


F.A.P. RTE.	SECTION	COUNTY	TOTAL SHEETS	SHEET NO.
669	11W-3,RS-8,*	TAZEWELL	442	130
STA. 299+00		TO STA. 314+00		
FED. ROAD DIST. NO.		ILLINOIS	FED. AID PROJECT	



SYMBOLS

- Arrow board
- Work area
- Sign
- Direction indicator barricade with steady burn monodirectional light
- Drum with steady burn monodirectional light
- Type III barricade with flashing monodirectional lights
- Flexible delineator
- Type II barricade, drum, or vertical barricade with steady burn monodirectional light
- Temporary Traffic Signal
- Temporary Detector Loop (6'x20')
- Vertical panel
- Flagger
- Type C Monodirectional reflector
- Vertical panels at 25' centers with steady burn monodirectional lights.
- Impact attenuators, temporary (non-redirective), test level 3
- Impact attenuators, temporary (fully-redirective, narrow), test level 3
- Temporary concrete barrier

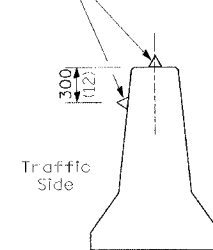
CONSTRUCTION GENERAL NOTES

1. COMPLETE STAGE II REMOVAL AND CONSTRUCTION OF BRIDGES.
2. CONSTRUCT BASE COURSE WIDENING AND GRADE FOR SHOULDERS ALONG NB IL 29. WIDEN IL 29 ACROSS WEST LANE 1/2 AT A TIME. WIDENING IL 29 ACROSS N. FOREST DR. AND ACROSS WEST LANE MUST BE COMPLETED BETWEEN JUNE 5TH AND AUGUST 15TH.
3. RECONSTRUCT WEST LANE IN TWO STAGES, WHILE MAINTAINING TWO-WAY TRAFFIC.
4. CONSTRUCT STORM SEWER AND PATCH ACROSS SOUTH FOREST DRIVE PRIOR TO MAKING HIGHWAY BOULEVARD 2 ONE-WAY AS SHOWN IN THE STAGE 4A PLANS. THIS WORK SHALL BE COMPLETED OVER A WEEKEND OR ANYTIME BETWEEN JUNE 5TH AND AUGUST 15TH.
5. PLACE BIT CONC BINDER CSE ON ELM ST. TO MATCH INTO IL 29.
6. CONSTRUCT STORM SEWER, CURB AND GUTTER, PAVEMENT, AND ENTRANCES ON HIGHWAY BOULEVARD 2. SEE STAGING PLANS AND STAGING TYPICALS FOR HIGHWAY BOULEVARD 2 (STAGES 4A - 4B) FOR DETAILS.

TRAFFIC CONTROL GENERAL NOTES

- ① CLOSE THE NB LANES FOR WORK DESCRIBED IN CONSTRUCTION GENERAL NOTES 1-3 USING STANDARD 701431 UNLESS OTHERWISE SHOWN. STRIPE ACCORDING TO STANDARD 701431. SIGNING ON SIDEROADS SHALL BE IN ACCORDANCE WITH STANDARD 701602.
- ② N. FOREST DR. MAY BE CLOSED FOR 7 CALENDAR DAYS TO ALLOW FOR THE WIDENING OF IL 29 ACROSS THE SIDESTREET.
- ③ MAINTAIN TWO-WAY TRAFFIC ON WEST LANE WHILE CONSTRUCTING IL 29 WIDENING ACROSS THE SIDESTREET.
- ④ MAINTAIN TWO WAY TRAFFIC ON WEST LANE WHILE RECONSTRUCTING THE SIDESTREET BY PROVIDING TWO 10 FOOT LANES OR BY USING FLAGGERS.
- ⑤ SOUTH FOREST MAY BE CLOSED FOR TWO CALENDAR DAYS FOR THE STORM SEWER AND PATCHING WORK.
- ⑥ A CHECK BARRICADE SHALL BE PLACED IN THE MIDDLE OF THE CLOSED LANE AT 1000' CENTERS.
- ⑦ USE AN ADDITIONAL FLAGGER WHEN WIDENING SIDESTREETS OR WORKING AT INTERSECTIONS.
- ⑧ SEE STAGING PLANS AND STAGING TYPICALS FOR HIGHWAY BOULEVARD 2 (STAGES 4A - 4B) FOR ADDITIONAL TRAFFIC CONTROL.

Type C monodirectional reflectors on tangent portion of barrier at 15 m (50') cts.



DETAIL A
(BARRIER WALL REFLECTORS)



REVISIONS	
NAME	DATE

ILLINOIS DEPARTMENT OF TRANSPORTATION
IL RTE 29
WESLEY RD TO IL RTE 98
SUGGESTED STAGES OF CONSTRUCTION
AND TRAFFIC CONTROL
STAGE 4

SCALE: VERT.
HORIZ.
DATE

DRAWN BY
CHECKED BY