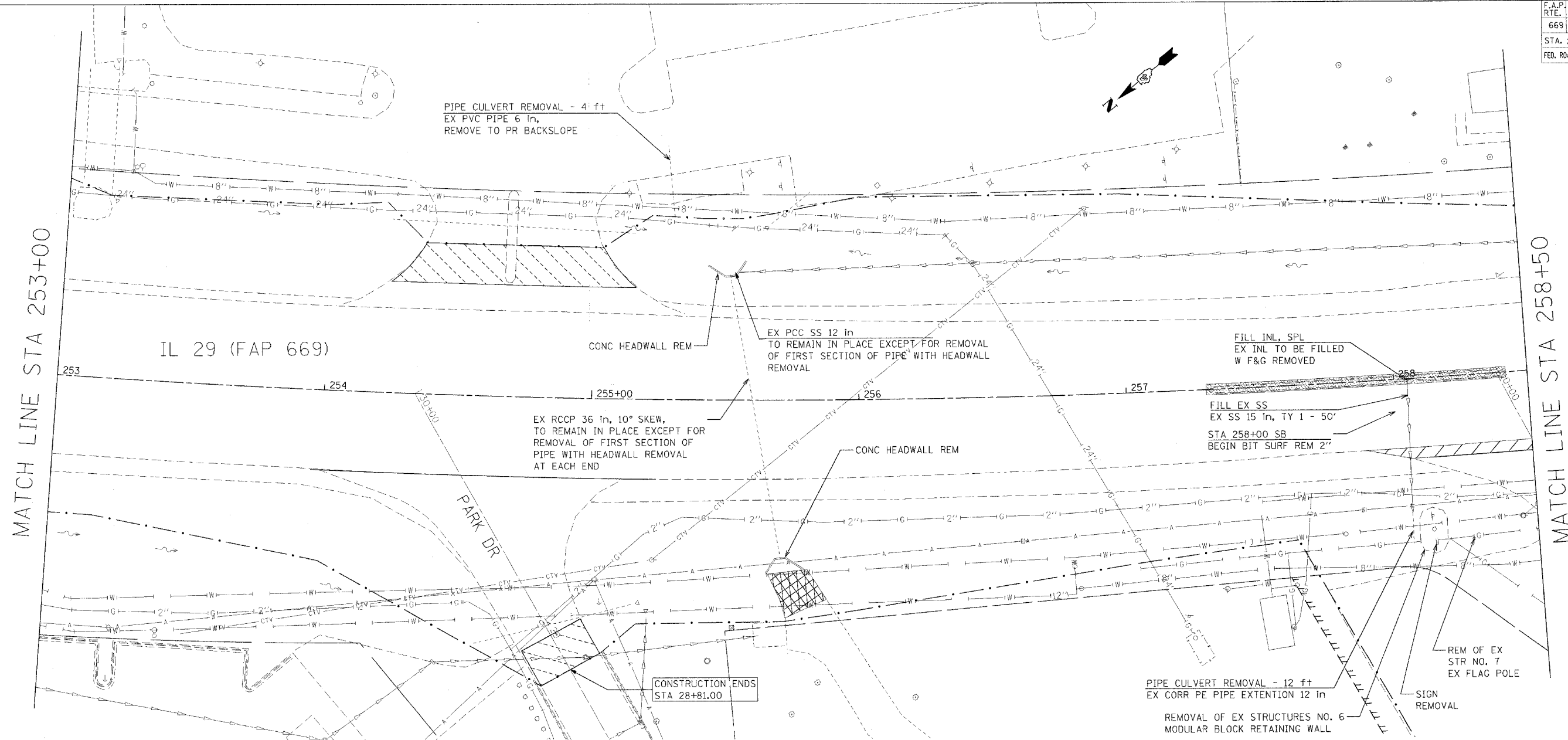


F.A.P. RTE.	SECTION	COUNTY	TOTAL SHEETS	SHEET NO.
669	11W-3,RS-8,*	TAZEWELL	442	143
STA. 253+00		TO STA.258+50		
FED. ROAD DIST. NO.	ILLINOIS	FED. AID PROJECT		

• 11BR-1, 11BR-2



MATCH LINE STA 253+00

MATCH LINE STA 258+50

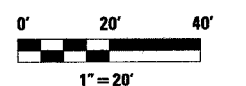
IL 29 (FAP 669)

PARK DR

LEGEND FOR REMOVAL ITEMS

- | | | |
|--------------------------------|-----------------------|-------------------------------|
| PAVEMENT REMOVAL | CCC & G REMOVAL | BIT SURF REM BUTT JOINT (SPL) |
| PAVEMENT REMOVAL (SPECIAL) | GUARDRAIL REMOVAL | BIT SURF REM - BUTT JOINT |
| SHOULDER REMOVAL | BUILDING REMOVAL | |
| DRIVEWAY PAVEMENT REMOVAL | SPECIAL EXCAVATION | |
| MEDIAN REMOVAL | TREE REMOVAL | |
| MEDIAN REMOVAL (PARTIAL DEPTH) | TREE REMOVAL (ACRE) | |
| | REVETMENT MAT REMOVAL | |

NOTE: BIT SURF REM 2" FROM STA 258+00 TO STA 267+83 AND STA 277+39.82 TO 286+05 IN SOUTH BOUND LANES ONLY AND BIT SURF REM 1-1/2" ELSEWHERE ON IL 29 MAINLINE.



REVISIONS	
NAME	DATE

ILLINOIS DEPARTMENT OF TRANSPORTATION

REMOVAL PLANS

SCALE: VERT. _____
HORIZ. _____

DATE _____

DRAWN BY _____
CHECKED BY _____

PLOT DATE = 4/18/2006
 FILE NAME = c:\pwork\sheet\28\mpeku\shbase\11\28\shplan.dgn
 PLOT SCALE = 20.00000 / IN.
 USER NAME = shouphz