

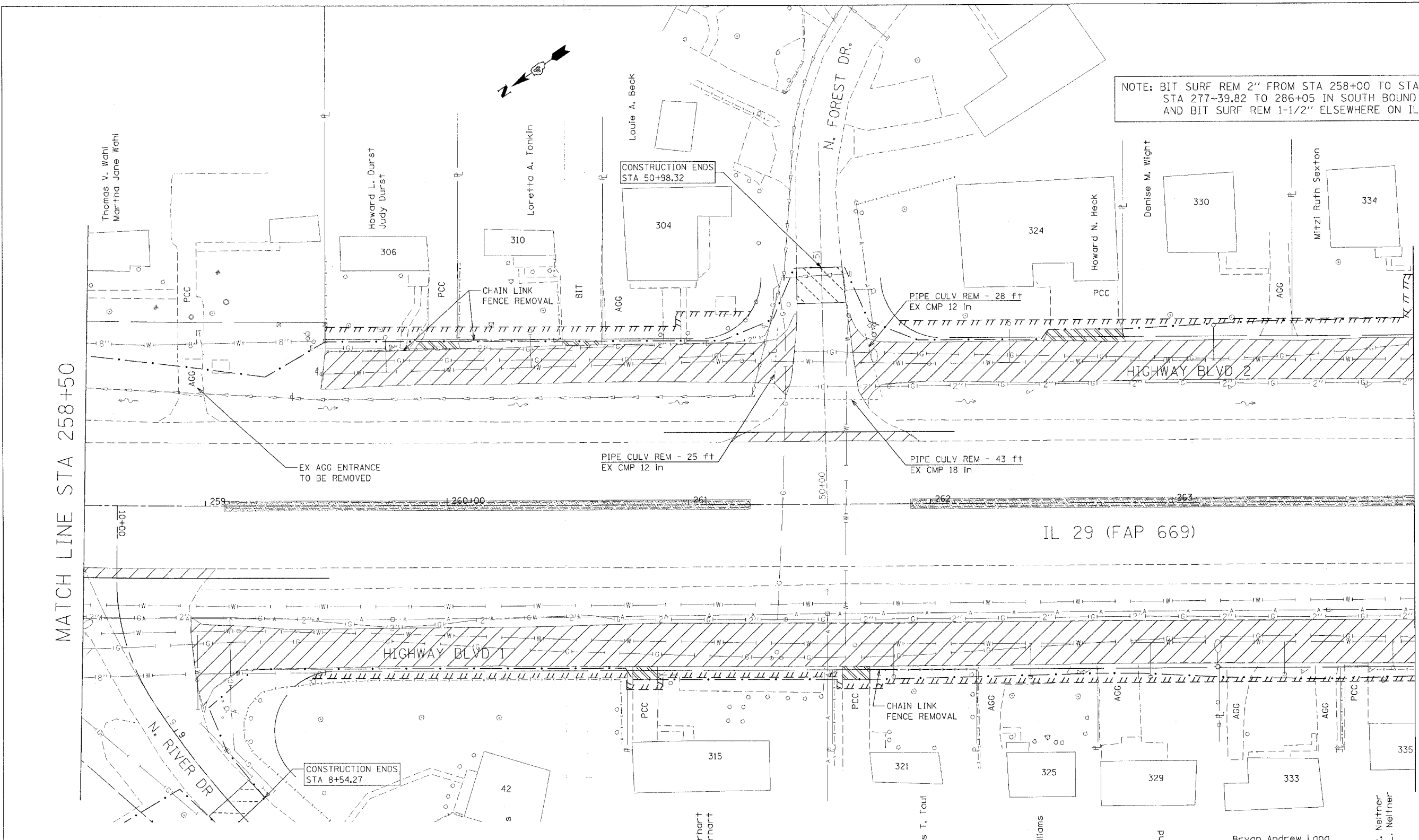
F.A.P. RTE.	SECTION	COUNTY	TOTAL SHEETS	SHEET NO.
669	11W-3,RS-8,*	TAZEWELL	442	144
STA. 258+50		TO STA.264+00		
FED. ROAD DIST. NO.		ILLINOIS	FED. AID PROJECT	

* 11BR-1, 11BR-2

NOTE: BIT SURF REM 2" FROM STA 258+00 TO STA 267+83 AND STA 277+39.82 TO 286+05 IN SOUTH BOUND LANES ONLY AND BIT SURF REM 1-1/2" ELSEWHERE ON IL 29 MAINLINE.

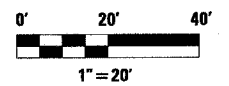
MATCH LINE STA 258+50

MATCH LINE STA 264+00



LEGEND FOR REMOVAL ITEMS

- | | | | |
|----------------------------|--------------------------------|---------------------|-------------------------------|
| PAVEMENT REMOVAL | MEDIAN REMOVAL | BUILDING REMOVAL | REVETMENT MAT REMOVAL |
| PAVEMENT REMOVAL (SPECIAL) | MEDIAN REMOVAL (PARTIAL DEPTH) | SPECIAL EXCAVATION | BIT SURF REM BUTT JOINT (SPL) |
| SHOULDER REMOVAL | CCC & G REMOVAL | TREE REMOVAL | BIT SURF REM - BUTT JOINT |
| DRIVEWAY PAVEMENT REMOVAL | GUARDRAIL REMOVAL | TREE REMOVAL (ACRE) | |



REVISIONS	
NAME	DATE

ILLINOIS DEPARTMENT OF TRANSPORTATION

REMOVAL PLANS

SCALE: VERT. _____
 HORIZ. _____
 DATE _____ DRAWN BY _____
 CHECKED BY _____

PLOT DATE = 4/18/2006
 FILE NAME = 411822006
 PLOT SCALE = 20,000000 / IN.
 USER NAME = ehoughz