

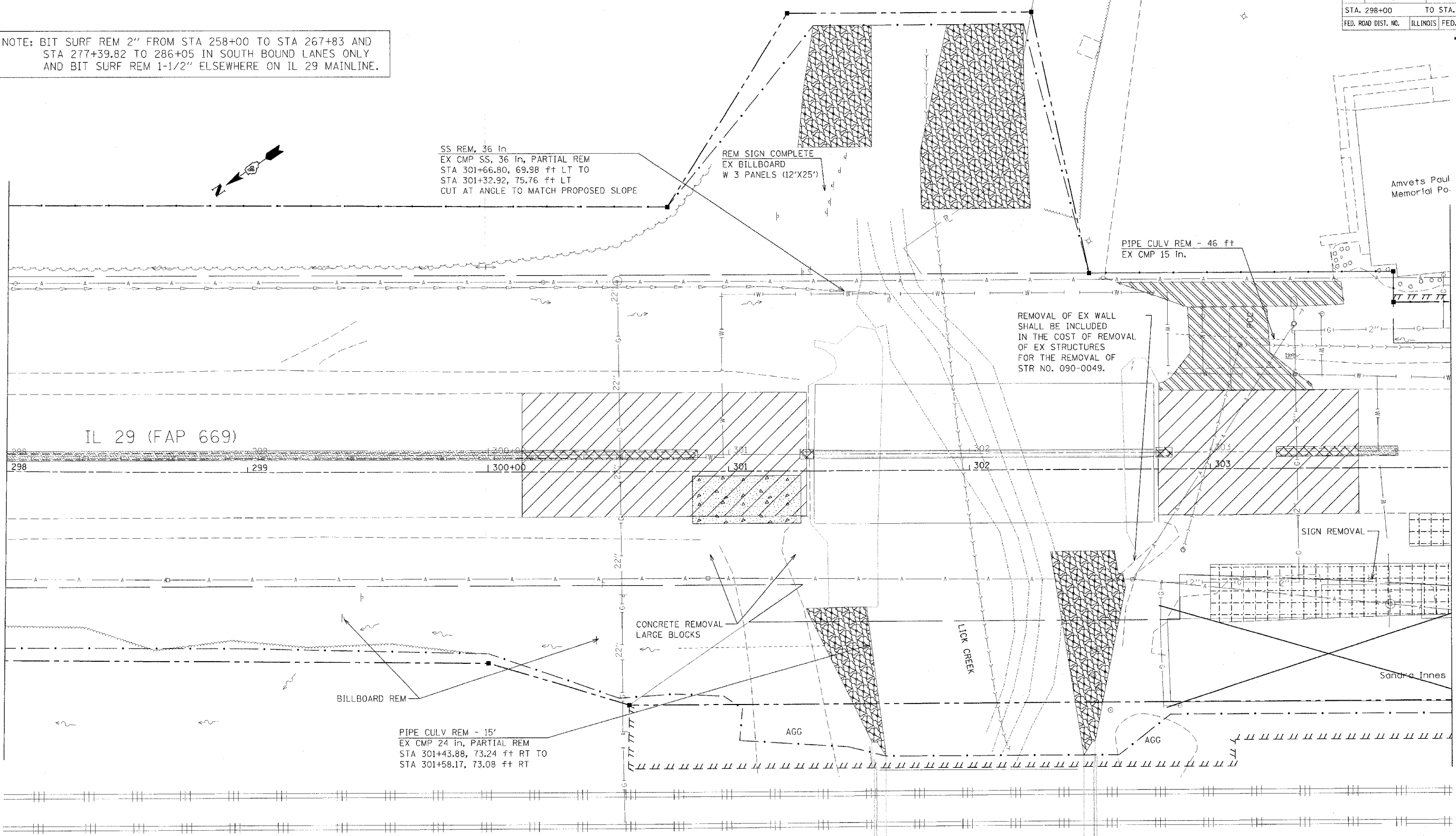
F.A.P. RTE.	SECTION	COUNTY	TOTAL SHEETS	SHEET NO.
669	11W-3,RS-8.	TAZEWELL	442	151
STA. 298+00		TO STA. 304+00		
FED. ROAD DIST. NO.	ILLINOIS	FED. AID PROJECT		

• 11BR-1, 11BR-2

NOTE: BIT SURF REM 2" FROM STA 258+00 TO STA 267+83 AND STA 277+39.82 TO 286+05 IN SOUTH BOUND LANES ONLY AND BIT SURF REM 1-1/2" ELSEWHERE ON IL 29 MAINLINE.

MATCH LINE STATION 298+00

MATCH LINE STATION 304+00



SS REM, 36 in
EX CMP SS, 36 in, PARTIAL REM
STA 301+66.80, 69.98 ft LT TO
STA 301+32.92, 75.76 ft LT
CUT AT ANGLE TO MATCH PROPOSED SLOPE

REM SIGN COMPLETE
EX BILLBOARD
W 3 PANELS (12'x25')

PIPE CULV REM - 46 ft
EX CMP 15 in.

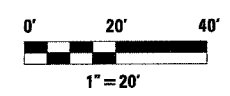
REMOVAL OF EX WALL
SHALL BE INCLUDED
IN THE COST OF REMOVAL
OF EX STRUCTURES
FOR THE REMOVAL OF
STR NO. 090-0049.

CONCRETE REMOVAL
LARGE BLOCKS

PIPE CULV REM - 15'
EX CMP 24 in, PARTIAL REM
STA 301+43.88, 73.24 ft RT TO
STA 301+58.17, 73.08 ft RT

LEGEND FOR REMOVAL ITEMS

- | | | | |
|----------------------------|--------------------------------|---------------------|-------------------------------|
| PAVEMENT REMOVAL | MEDIAN REMOVAL | BUILDING REMOVAL | REVETMENT MAT REMOVAL |
| PAVEMENT REMOVAL (SPECIAL) | MEDIAN REMOVAL (PARTIAL DEPTH) | SPECIAL EXCAVATION | BIT SURF REM BUTT JOINT (SPL) |
| SHOULDER REMOVAL | CCC & G REMOVAL | TREE REMOVAL | BIT SURF REM - BUTT JOINT |
| DRIVEWAY PAVEMENT REMOVAL | GUARDRAIL REMOVAL | TREE REMOVAL (ACRE) | |



REVISIONS	
NAME	DATE

ILLINOIS DEPARTMENT OF TRANSPORTATION

REMOVAL PLANS

SCALE: VERT. HORIZ.
DATE

DRAWN BY
CHECKED BY

PLOT DATE = 4/18/2006
 FILE NAME = c:\p06\88804\11br\plan\11br-1.dgn
 PLOT SCALE = 20.000000 / 1 in.
 USER NAME = shouphz