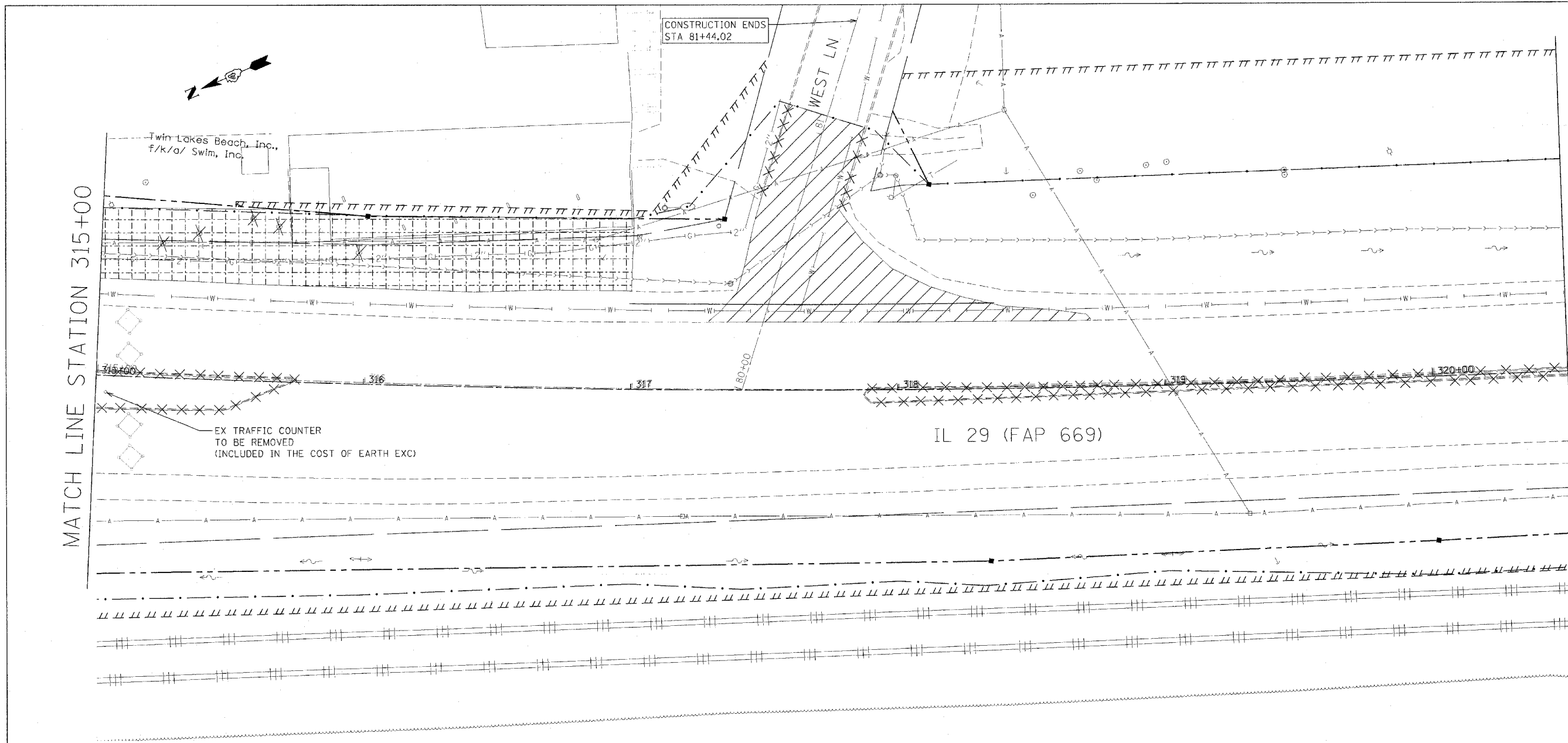


F.A.P. RTE.	SECTION	COUNTY	TOTAL SHEETS	SHEET NO.
669	11W-3,RS-8,*	TAZEWELL	442	154
STA. 315+00		TO STA. 320+50		
FED. ROAD DIST. NO.		ILLINOIS FED. AID PROJECT		
• 11BR-1, 11BR-2				



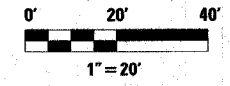
MATCH LINE STATION 315+00

MATCH LINE STATION 320+50

LEGEND FOR REMOVAL ITEMS

- | | | | |
|--|--------------------------------|--|----------------------|
| | PAVEMENT REMOVAL | | CCC & G REMOVAL |
| | PAVEMENT REMOVAL (SPECIAL) | | GUARDRAIL REMOVAL |
| | SHOULDER REMOVAL | | BUILDING REMOVAL |
| | DRIVEWAY PAVEMENT REMOVAL | | SPECIAL EXCAVATION |
| | MEDIAN REMOVAL | | TREE REMOVAL |
| | MEDIAN REMOVAL (PARTIAL DEPTH) | | TREE REMOVAL (ACRE) |
| | | | REVTMENT MAT REMOVAL |

NOTE: BIT SURF REM 2" FROM STA 258+00 TO STA 267+83 AND STA 277+39.82 TO 286+05 IN SOUTH BOUND LANES ONLY AND BIT SURF REM 1-1/2" ELSEWHERE ON IL 29 MAINLINE.



REVISIONS	
NAME	DATE

ILLINOIS DEPARTMENT OF TRANSPORTATION

REMOVAL PLANS

SCALE: VERT. HORIZ.
DATE

DRAWN BY
CHECKED BY