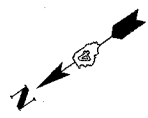
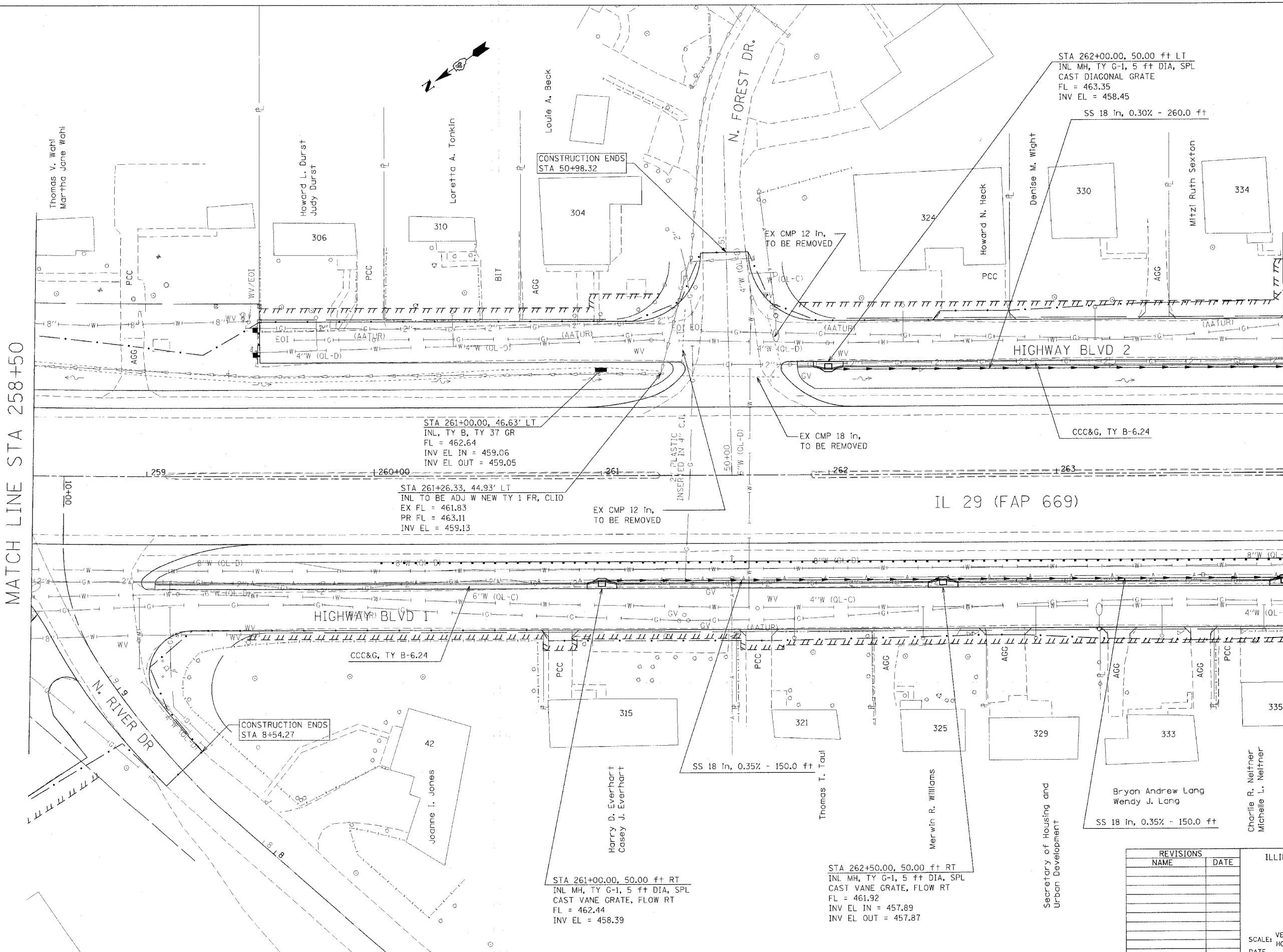


F.A.P. RTE.	SECTION	COUNTY	TOTAL SHEETS	SHEET NO.
669	11W-3,RS-8,*	TAZEWELL	442	161
STA. 258+50		TO STA.264+00		
FED. ROAD DIST. NO.		ILLINOIS FED. AID PROJECT		
* 11BR-1, 11BR-2				

MATCH LINE STA 258+50

MATCH LINE STA 264+00



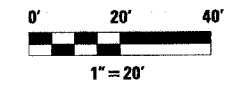
STA 262+00.00, 50.00 ft LT
 INL MH, TY G-1, 5 ft DIA, SPL
 CAST DIAGONAL GRATE
 FL = 463.35
 INV EL = 458.45

STA 261+00.00, 46.63' LT
 INL, TY B, TY 37 GR
 FL = 462.64
 INV EL IN = 459.06
 INV EL OUT = 459.05

STA 261+26.33, 44.93' LT
 INL TO BE ADJ W NEW TY 1 FR, CLID
 EX FL = 461.83
 PR FL = 463.11
 INV EL = 459.13

STA 261+00.00, 50.00 ft RT
 INL MH, TY G-1, 5 ft DIA, SPL
 CAST VANE GRATE, FLOW RT
 FL = 462.44
 INV EL = 458.39

STA 262+50.00, 50.00 ft RT
 INL MH, TY G-1, 5 ft DIA, SPL
 CAST VANE GRATE, FLOW RT
 FL = 461.92
 INV EL IN = 457.89
 INV EL OUT = 457.87



REVISIONS	
NAME	DATE

ILLINOIS DEPARTMENT OF TRANSPORTATION

DRAINAGE & UTILITY PLANS

SCALE: VERT. _____
 HORIZ. _____
 DATE: _____

DRAWN BY _____
 CHECKED BY _____

PLOT DATE = 4/19/2006
 FILE NAME = c:\projects\237\puk\in\phase_11\261\in\pro\idgn
 USER NAME = shucup