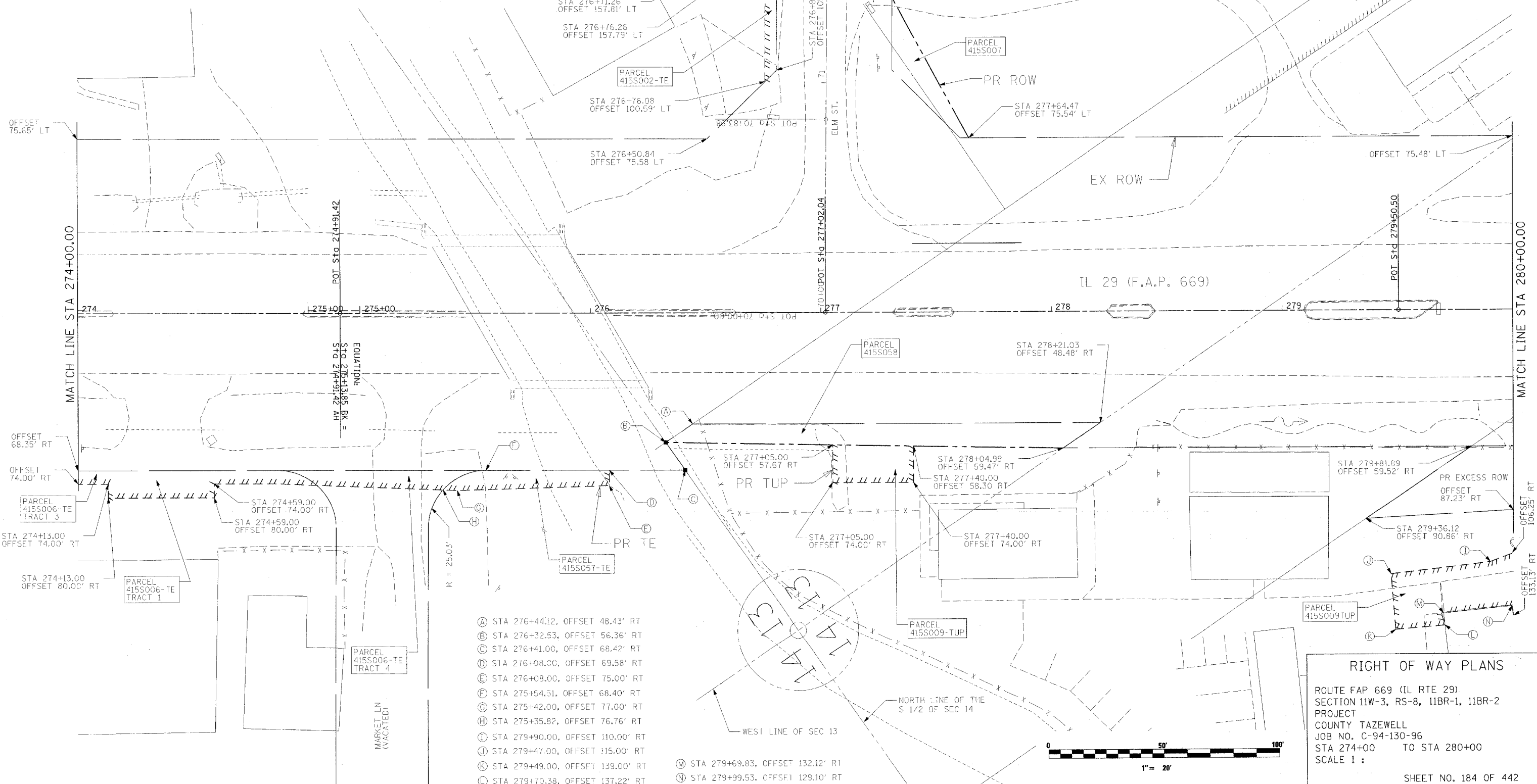


STATE OF ILLINOIS  
DEPARTMENT OF TRANSPORTATION

PARCEL	OWNER	EASEMENT PURPOSE	ENGLISH				EASEMENT
			TOTAL AREA	AREA ADD.	TAKEN EXIST.	REM. AREA	
415S002-TE	GZ REALTY, I.L.C.		0.009				TE
415S006-TE TRACT 1	JAVAD KOTTABI & REZA EMITAZ		0.012				TE
415S006-TE TRACT 3	JAVAD KOTTABI & REZA EMITAZ		0.009				TE
415S006-TE TRACT 4	JAVAD KOTTABI & REZA EMITAZ		0.016				TE
415S007	HICKSGAS CIFFORD, INC.		0.010				PR ROW
415S009-TUP	DAVID A. WYATT & LYNN M. WYATT		0.013				TUP
415S009-TUP	DAVID A. WYATT & LYNN M. WYATT		0.307				TUP
415S057-TE	DINGEMAN, L.L.C.		0.011				TE
415S058	VILLAGE OF NORTH PEKIN		0.282				PR ROW

AREAS ARE IN ACRES UNLESS NOTED.



- (A) STA 276+44.12, OFFSET 48.43' RT
- (B) STA 276+32.53, OFFSET 56.36' RT
- (C) STA 276+41.00, OFFSET 68.42' RT
- (D) STA 276+08.00, OFFSET 69.58' RT
- (E) STA 276+08.00, OFFSET 75.00' RT
- (F) STA 275+54.51, OFFSET 68.40' RT
- (G) STA 275+42.00, OFFSET 77.00' RT
- (H) STA 275+35.82, OFFSET 76.76' RT
- (I) STA 279+90.00, OFFSET 110.00' RT
- (J) STA 279+47.00, OFFSET 115.00' RT
- (K) STA 279+49.00, OFFSET 139.00' RT
- (L) STA 279+70.38, OFFSET 137.22' RT

- (M) STA 279+69.83, OFFSET 132.12' RT
- (N) STA 279+99.53, OFFSET 129.10' RT

**RIGHT OF WAY PLANS**  
 ROUTE FAP 669 (IL RTE 29)  
 SECTION 11W-3, RS-8, 11BR-1, 11BR-2  
 PROJECT  
 COUNTY TAZEWELL  
 JOB NO. C-94-130-96  
 STA 274+00 TO STA 280+00  
 SCALE 1 :  
 SHEET NO. 184 OF 442

PLOT DATE = 4/18/2006  
 FILE NAME = c:\projects\29pekin\phase\_11\206.dwg  
 PLOT SCALE = 20.0000 / 1 IN.  
 USER NAME = ahoughz