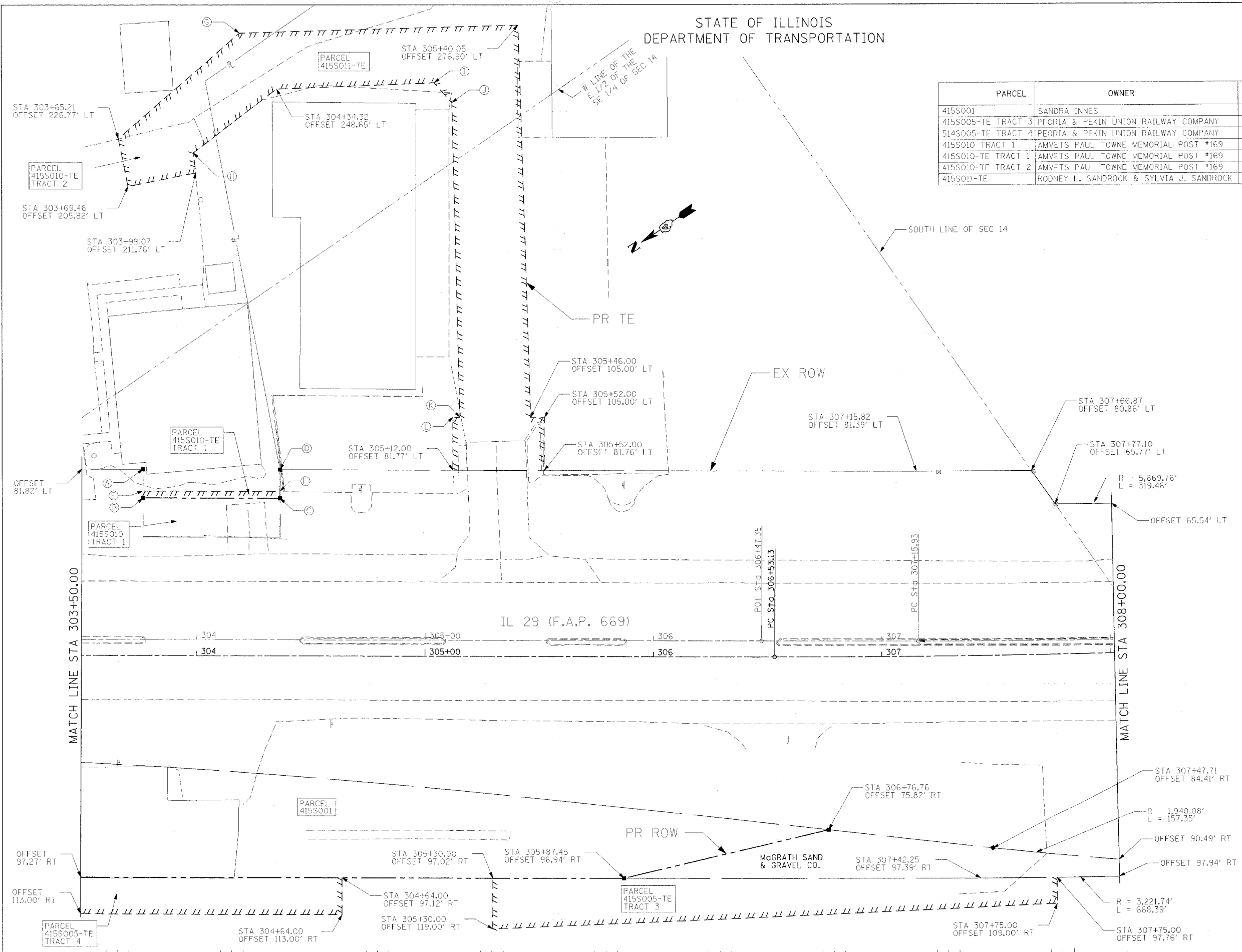


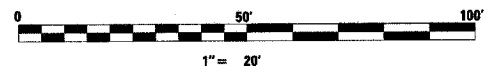
STATE OF ILLINOIS  
DEPARTMENT OF TRANSPORTATION

PARCEL	OWNER	EASEMENT PURPOSE	ENGLISH			
			TOTAL AREA	AREA TAKEN ADD.	REM. AREA EXIST.	EASEMENT
415S001	SANDRA INNES		0.496			PR ROW
415S005-TE TRACT 3	PEORIA & PEKIN UNION RAILWAY COMPANY		0.094			TE
514S005-TE TRACT 4	PEORIA & PEKIN UNION RAILWAY COMPANY		0.209			TE
415S010 TRACT 1	AMVETS PAUL TOWNE MEMORIAL POST #169		0.024			PR ROW
415S010-TE TRACT 1	AMVETS PAUL TOWNE MEMORIAL POST #169		0.004			TE
415S010-TE TRACT 2	AMVETS PAUL TOWNE MEMORIAL POST #169		0.034			TE
415S011-TE	RODNEY L. SANDROCK & SYLVIA J. SANDROCK		0.202			TE

AREAS ARE IN ACRES FEET UNLESS NOTED.



- Ⓐ STA 303+76.30, OFFSET 81.81' LT
- Ⓑ STA 303+76.29, OFFSET 69.00' LT
- Ⓒ STA 304+36.29, OFFSET 69.00' LT
- Ⓓ STA 304+36.30, OFFSET 81.79' LT
- Ⓔ STA 303+76.30, OFFSET 72.00' LT
- Ⓕ STA 304+36.30, OFFSET 72.00' LT
- Ⓖ STA 304+18.11, OFFSET 272.97' LT
- Ⓗ STA 303+98.03, OFFSET 220.69' LT
- Ⓘ STA 305+03.33, OFFSET 251.62' LT
- Ⓝ STA 305+11.13, OFFSET 242.99' LT
- Ⓚ STA 305+15.00, OFFSET 105.00' LT
- Ⓛ STA 305+12.00, OFFSET 105.00' LT



**RIGHT OF WAY PLANS**  
 ROUTE FAP 669 (IL RTE 29)  
 SECTION 11W-3, RS-8, 11BR-1, 11BR-2  
 PROJECT  
 COUNTY TAZEWELL  
 JOB NO. C-94-130-96  
 STA 303+50 TO STA 308+00  
 SCALE 1 :  
 SHEET NO. 188 OF 442

PLOT DATE = 4/18/2005  
 FILE NAME = c:\projects\29\rightofway\p188.dwg  
 PLOT SCALE = 20.0000' / IN.  
 USER NAME = shouhzh