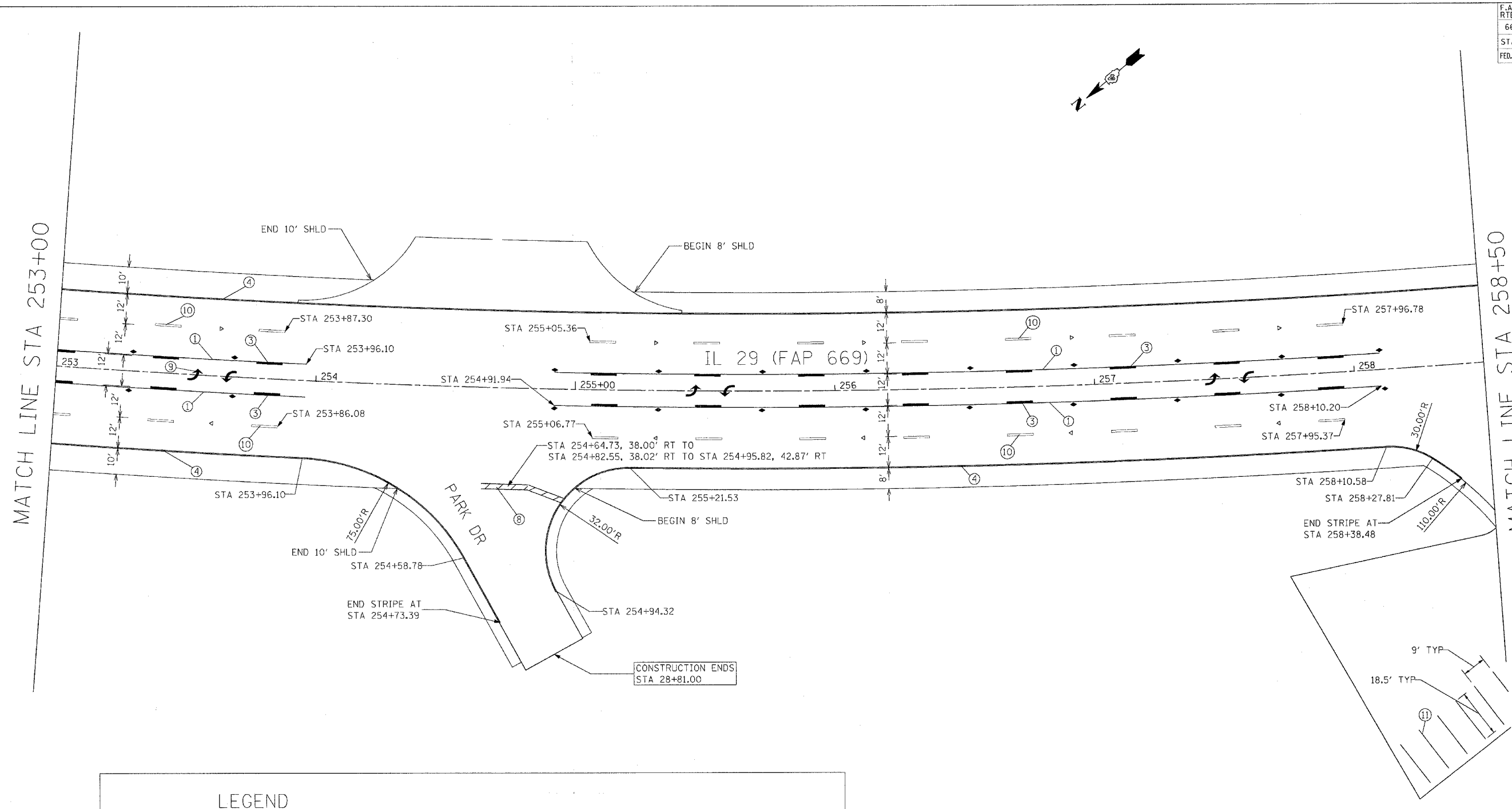


F.A.P. RTE.	SECTION	COUNTY	TOTAL SHEETS	SHEET NO.
669	11W-3,RS-8,*	TAZEWELL	442	194
STA. 253+00		TO STA.258+50		
FED. ROAD DIST. NO.		ILLINOIS	FED. AID PROJECT	

* 11BR-1, 11BR-2

MATCH LINE STA 253+00

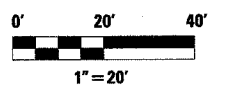
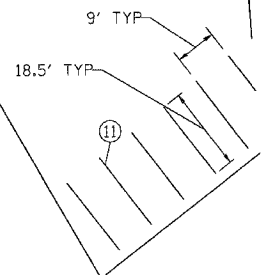
MATCH LINE STA 258+50



LEGEND

① EPOXY PAVEMENT MARKING - LINE 4" YELLOW SOLID	△ ONE-WAY CRYSTAL MARKER
② EPOXY PAVEMENT MARKING - LINE 4" DOUBLE YELLOW SOLID	▲ ONE-WAY AMBER MARKER
③ EPOXY PAVEMENT MARKING - LINE 4" YELLOW SKIP DASH	◆ TWO-WAY AMBER MARKER
④ EPOXY PAVEMENT MARKING - LINE 4" WHITE SOLID	
⑤ EPOXY PAVEMENT MARKING - LINE 8" WHITE SOLID	
⑥ EPOXY PAVEMENT MARKING - LINE 12" YELLOW SOLID	
⑦ EPOXY PAVEMENT MARKING - LINE 12" WHITE SOLID	
⑧ EPOXY PAVEMENT MARKING - LINE 24" WHITE SOLID	
⑨ EPOXY PAVEMENT MARKING - LETTERS AND SYMBOLS	
⑩ PREFORMED PLASTIC PAVEMENT MARKING, TYPE B - LINE 6" WHITE SKIP DASH	
⑪ PAINT PAVEMENT MARKING - LINE 4" YELLOW SOLID	
⑫ PAINT PAVEMENT MARKING - LETTERS AND SYMBOLS	

NOTE: SEE STANDARDS 780001, 781001, AND 780001-D4 FOR DETAILS NOT SHOWN.



REVISIONS	
NAME	DATE

ILLINOIS DEPARTMENT OF TRANSPORTATION

PAVEMENT MARKING PLANS

SCALE: VERT. _____
HORIZ. _____

DATE _____

DRAWN BY _____
CHECKED BY _____

PLOT DATE = 4/18/2006
 FILE NAME = c:\projects\11w3rs8\pavement\11w3rs8p.mxd
 USER NAME = jflyn