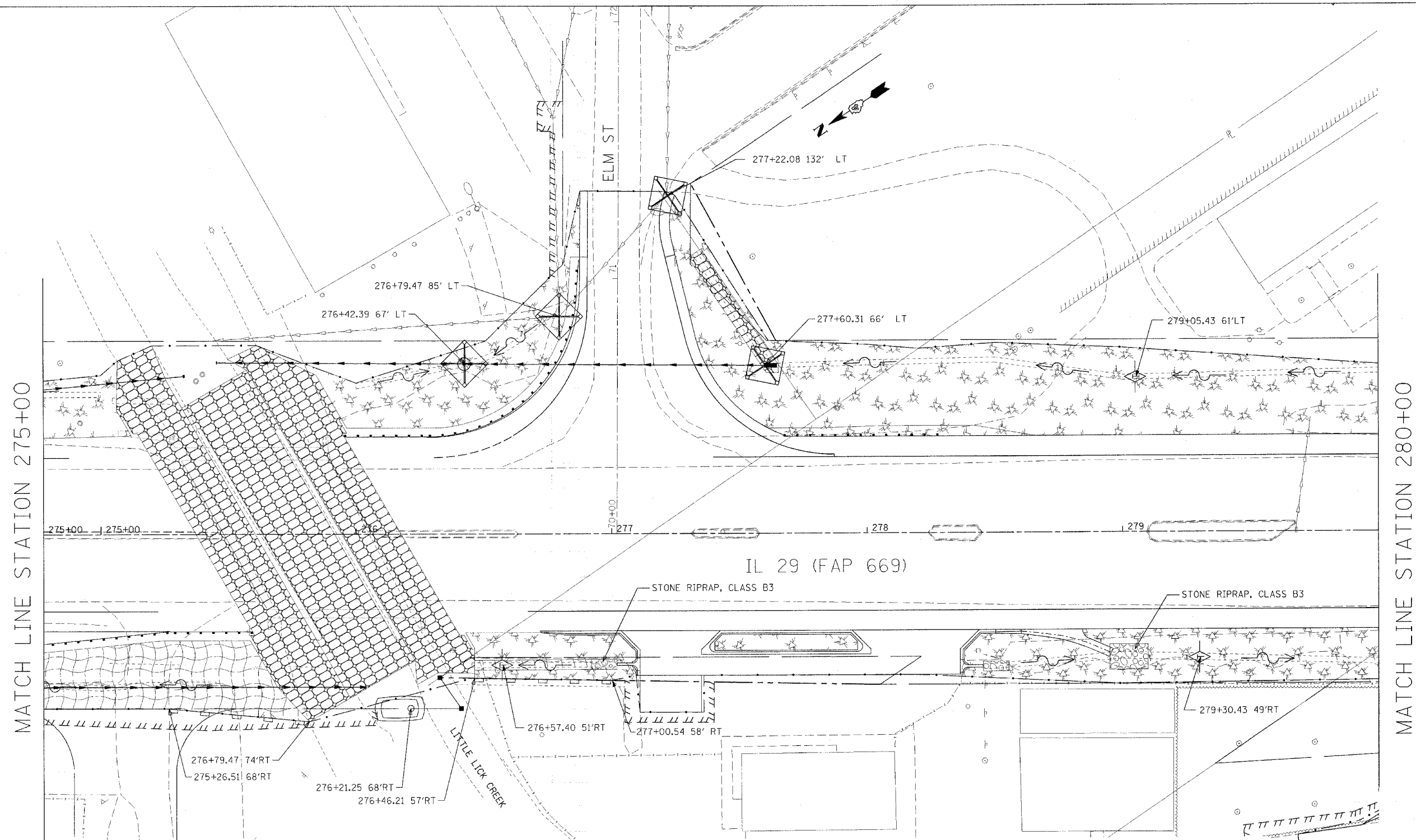


CONTRACT NO. 88804				
F.A.P. RTE.	SECTION	COUNTY	TOTAL SHEETS	SHEET NO.
669	11W-3,RS-8,*	TAZEWELL	442	215
STA. 275+00		TO STA.280+00		
FED. ROAD DIST. NO.	ILLINOIS	FED. AID PROJECT		
• 11BR-1, 11BR-2				



MATCH LINE STATION 275+00

MATCH LINE STATION 280+00

- General Notes**
1. ALL PERMANENT EROSION CONTROL MEASURES SHALL BE CONSTRUCTED AS SOON AS PRACTICAL.
  2. TEMPORARY SEEDING SHALL BE PLACED WHEN THE GROUND HAS BEEN DISTURBED AND PLACEMENT OF PERMANENT SEEDING IS NOT PRACTICAL OR AS DIRECTED BY THE ENGINEER.
  3. PLACE SEEDING, CLASS 2A IN AREAS USING MULCH, METHOD 2 AND EROSION CONTROL BLANKET.
  4. CONTACT THE DISTRICT 4 LANDSCAPE ARCHITECT AT (309) 671-4484 FOR TREE PLANTING LOCATIONS AT LEAST 2 WEEKS PRIOR TO PLANTING TREES.

**LEGEND**

	SEDIMENT BASIN		EROSION CONTROL BLANKET
	INLET AND PIPE PROTECTION		STONE RIPRAP, CLASS SPECIFIED
	PERIMETER EROSION BARRIER		FABRIC FORMED REVETMENT MAT
	TEMPORARY DITCH CHECK		MULCH, METHOD 2
	LIMITS OF CONSTRUCTION		SODDING



REVISIONS	
NAME	DATE

ILLINOIS DEPARTMENT OF TRANSPORTATION

**EROSION CONTROL & LANDSCAPING PLANS**

SCALE: VERT. \_\_\_\_\_  
HORIZ. \_\_\_\_\_

DATE \_\_\_\_\_

DRAWN BY \_\_\_\_\_  
CHECKED BY \_\_\_\_\_

PLOT DATE = 4/19/2006  
 FILE NAME = 2062000.dwg  
 PLOT SCALE = 20.0000 / IN.  
 USER NAME = shouphz