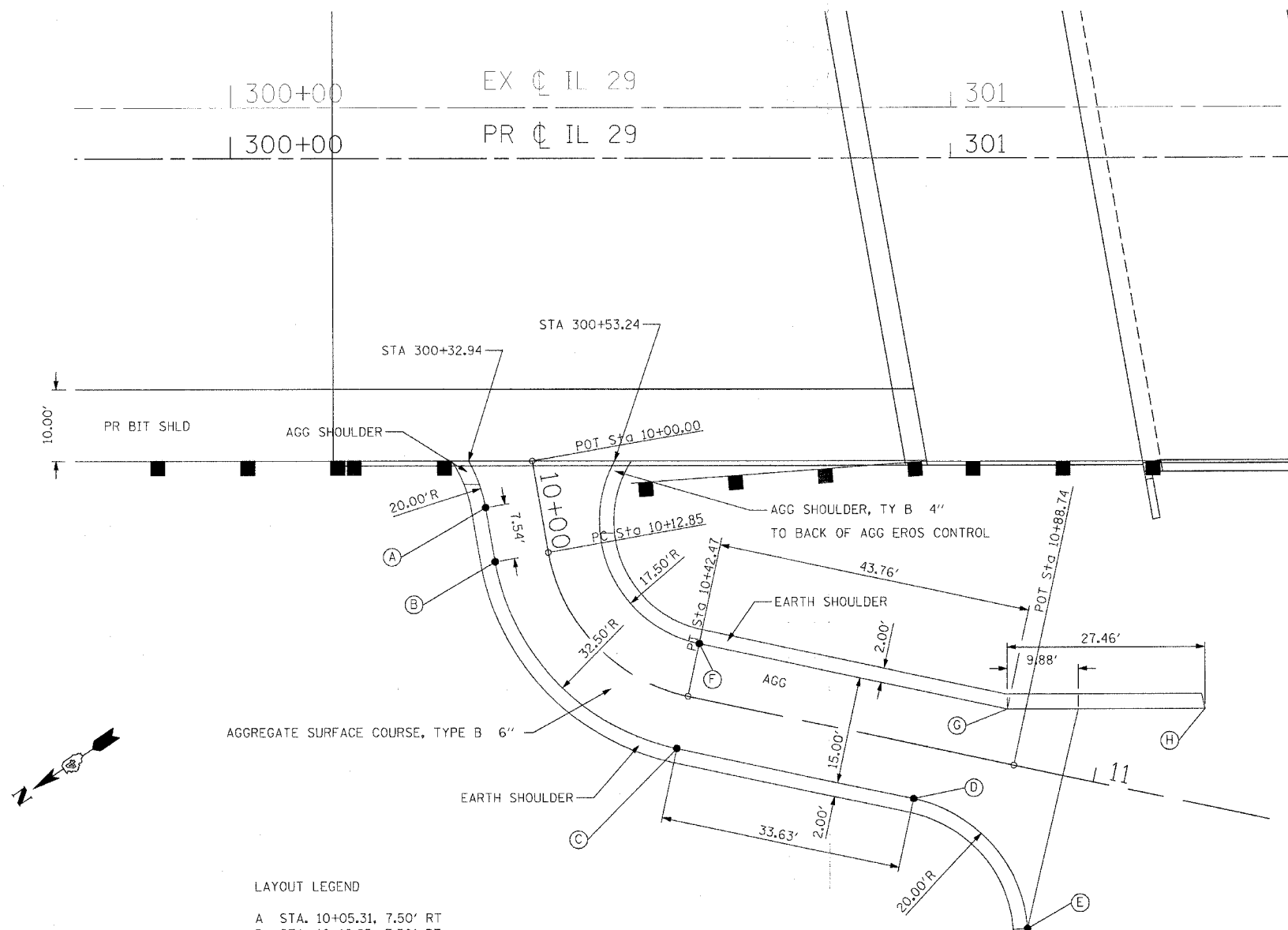


F.A.P. RTE.	SECTION	COUNTY	TOTAL SHEETS	SHEET NO.
669	11W-3,RS-8,*	TAZEWELL	442	236
STA.		TO STA.		
FED. ROAD DIST. NO.		ILLINOIS FED. AID PROJECT		

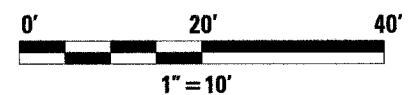
\* 11BR-1, 11BR-2



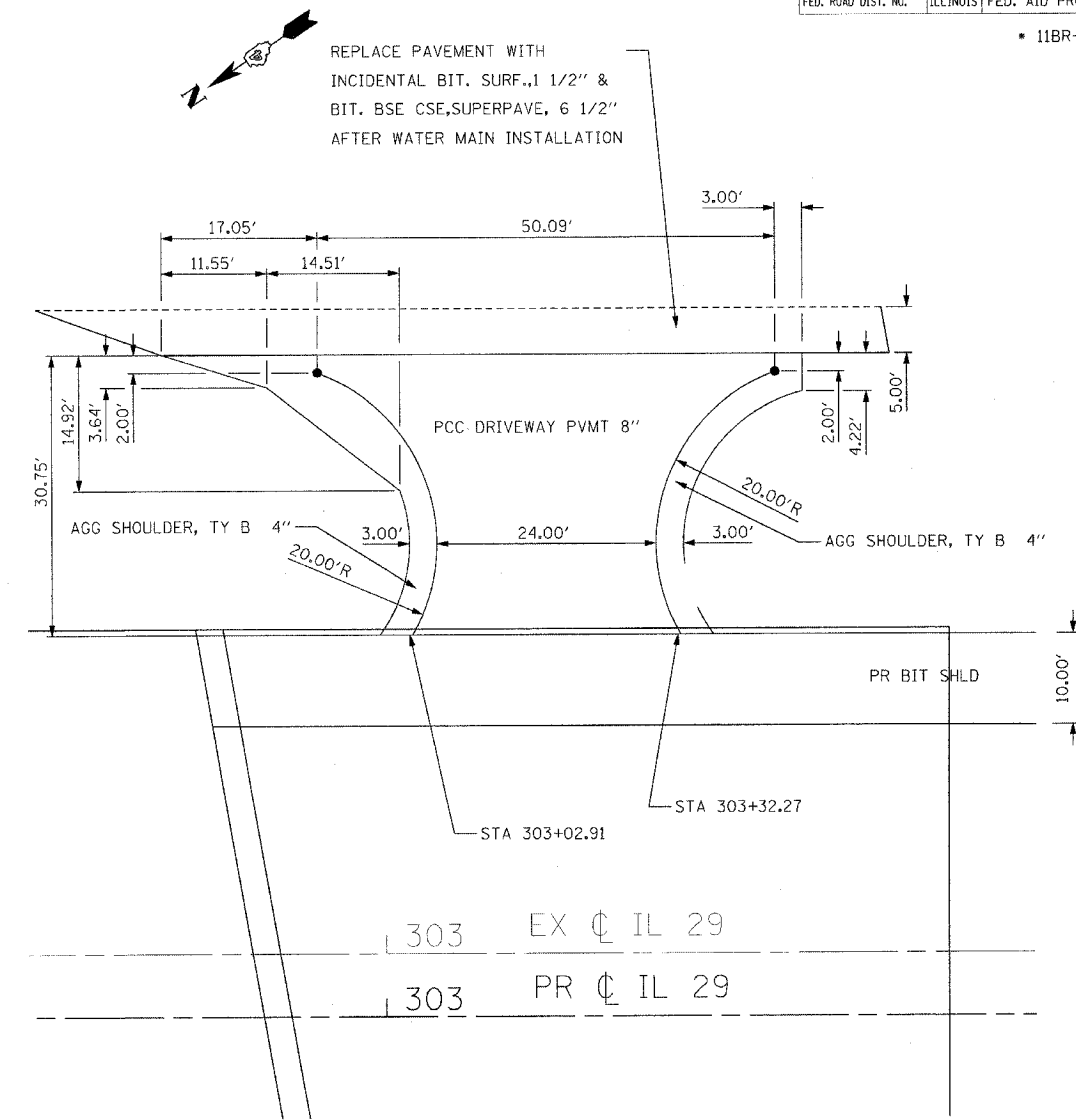
LAYOUT LEGEND

- A STA. 10+05.31, 7.50' RT
- B STA. 10+12.85, 7.50' RT
- C STA. 10+42.47, 7.50' RT
- D STA. 10+76.10, 7.50' RT
- E STA. 10+95.31, 21.94' RT
- F STA. 10+42.47, 7.50' LT
- G STA. 10+86.23, 7.50' LT
- H STA. 11+13.07, 13.26' LT

PROP. CURVE IDNRCUR  
 PI STA. = 10+29.68  
 $\Delta = 67^\circ 53' 31''$  (LT)  
 $D = 229^\circ 10' 59''$   
 $R = 25.00'$   
 $T = 16.83'$   
 $L = 29.62'$   
 $E = 5.14'$   
 $e = NC$   
 $T.R. = N/A$   
 $S.E. RUN = N/A$   
 $P.C. STA = 10+12.85$   
 $P.T. STA = 10+42.47$

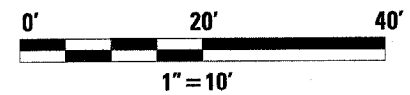


PLOT DATE = 4/19/2006  
 PLOT SCALE = 1/8" = 10.0000' / IN.  
 USER NAME = phouphz



REPLACE PAVEMENT WITH  
 INCIDENTAL BIT. SURF., 1 1/2" &  
 BIT. BSE CSE, SUPERPAVE, 6 1/2"  
 AFTER WATER MAIN INSTALLATION

AMVETS ENTRANCE



REVISIONS	
NAME	DATE

ILLINOIS DEPARTMENT OF TRANSPORTATION

## ENTRANCE DETAILS

SCALE: VERT. \_\_\_\_\_  
 HORIZ. \_\_\_\_\_

DATE \_\_\_\_\_

DRAWN BY \_\_\_\_\_  
 CHECKED BY \_\_\_\_\_