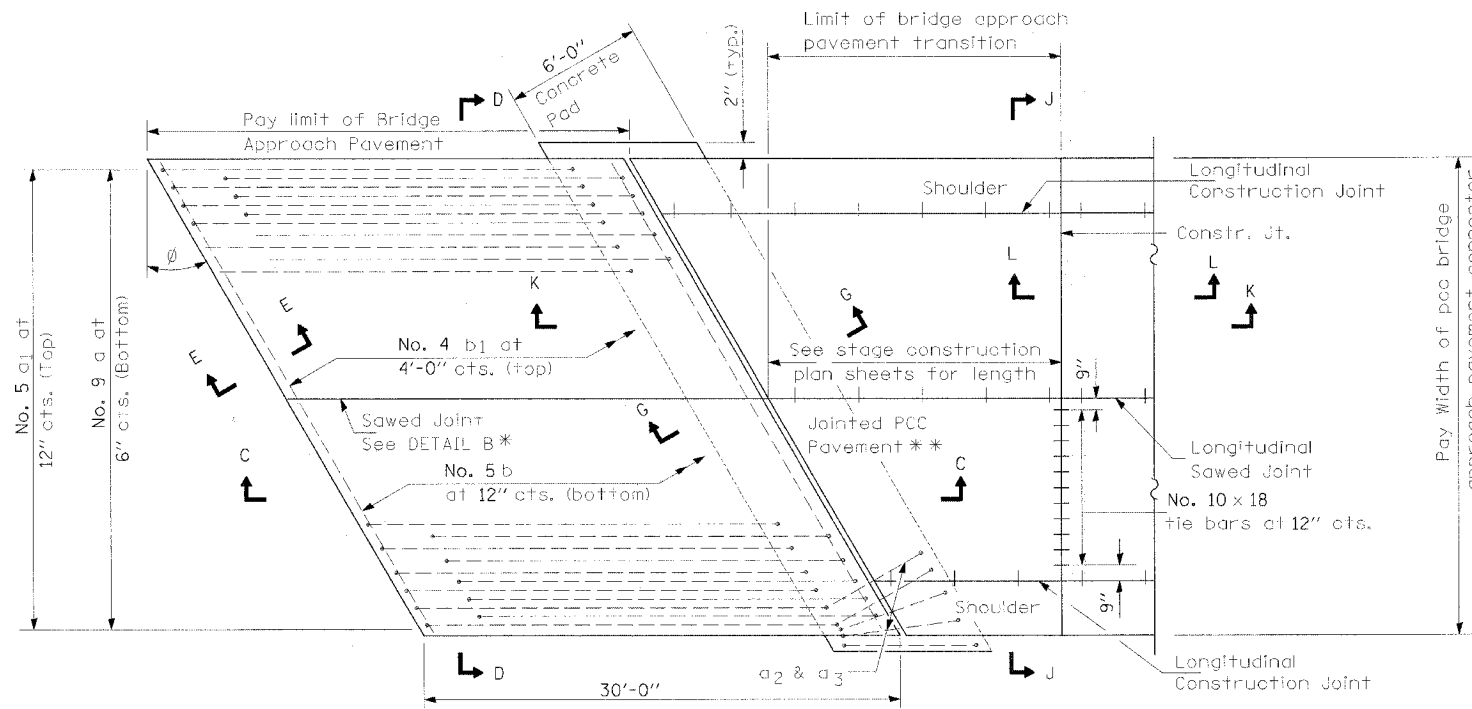
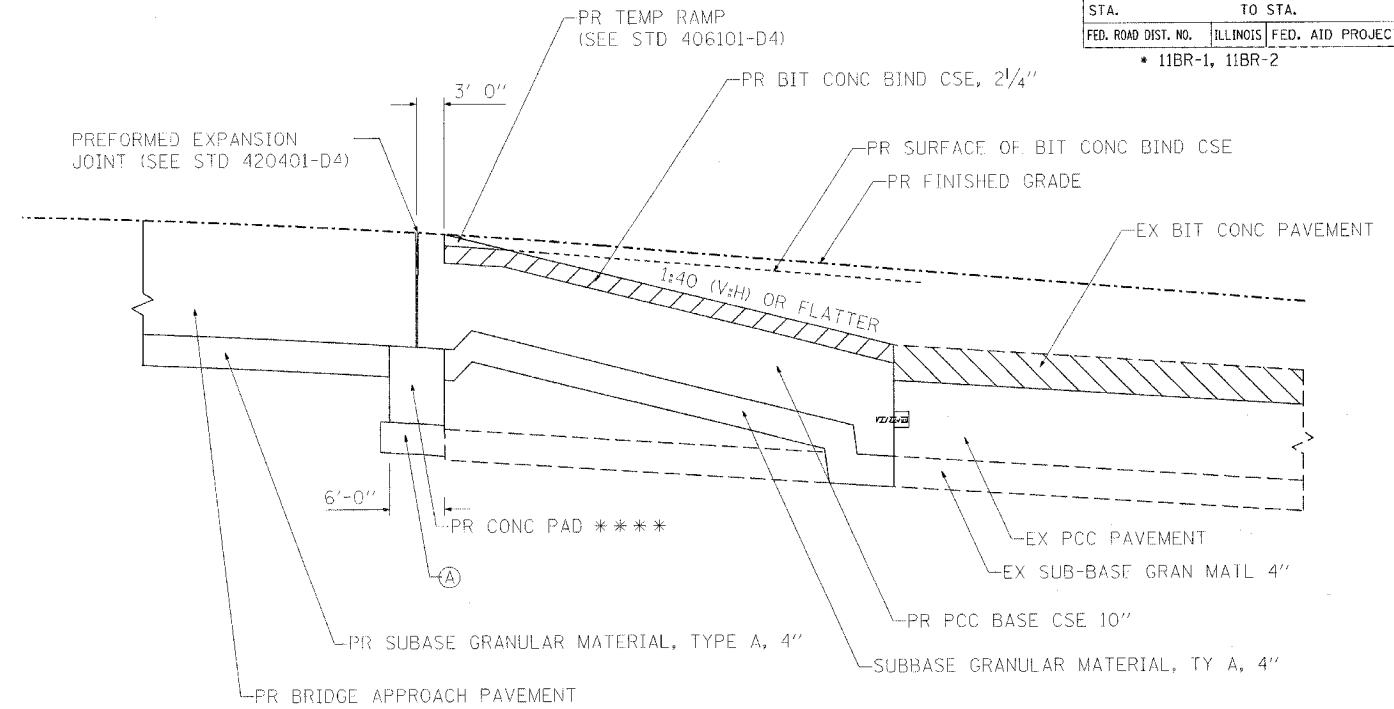


F.A.P. RTE.	SECTION	COUNTY	TOTAL SHEETS	SHEET NO.
669	11W-3,RS-8,*	TAZEWELL	442	243
STA.		TO STA.		
FED. ROAD DIST. NO.		ILLINOIS	FED. AID PROJECT	
• 11BR-1, 11BR-2				



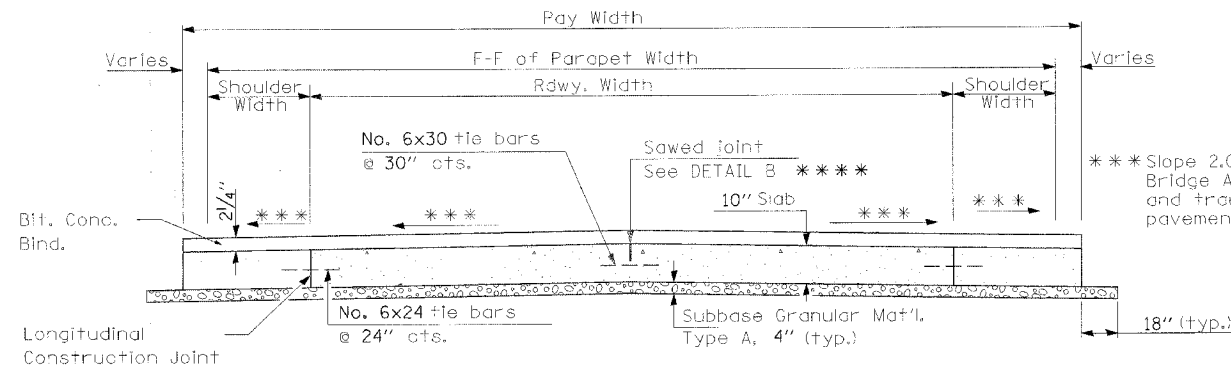
PLAN - WITH SKEW

- * Saw \perp or lane edge if poured two or more lane widths at a time.
- ** Use Standard 420106 for Jointed PCC Pavement details and recommended joint type and spacing on sheet 2 of this detail.



SECTION K-K

- **** SEE STANDARD 420401 FOR DIMENSIONING AND REINFORCEMENT INFORMATION
- (A) PR SUBBASE GRAN MATL, TY A, 4" (MIN) OR EX SUB-GRADE &/OR EX SUBBASE GRAN MATL APPROVED BY THE ENGINEER

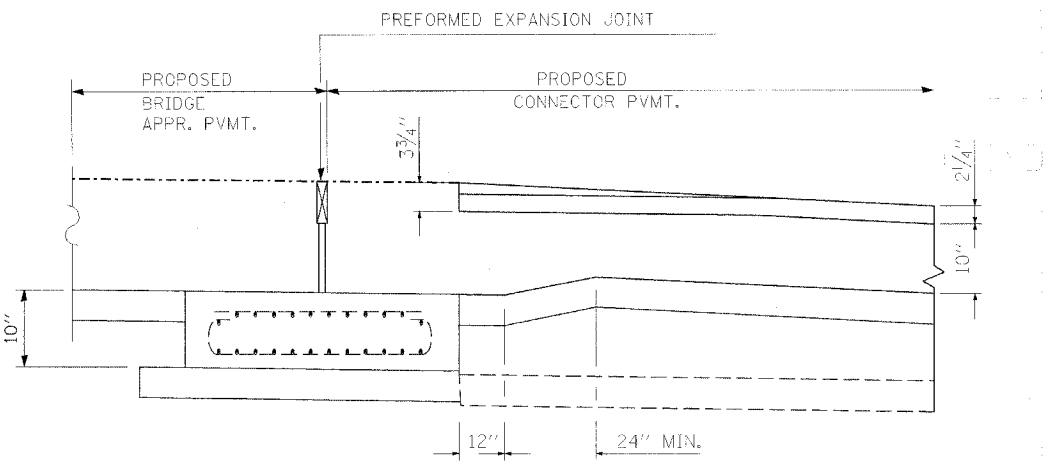


SECTION J-J

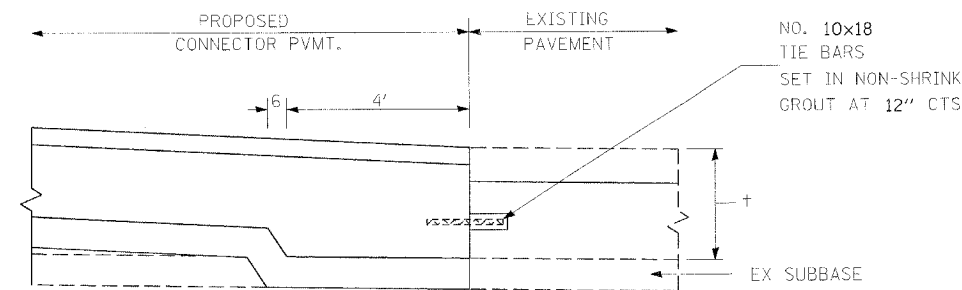
(See Plan for Dimensions not shown)
All reinforcement bars shall be epoxy coated.

GENERAL NOTES

- THICKNESS -"t"= THICKNESS OF PAVEMENT
- SEE STANDARD 421001 FOR REINFORCEMENT DETAILS NOT SHOWN.
- SEE STANDARD 420001 FOR JOINT DETAILS NOT SHOWN.
- SEE STANDARD 420401-D4 FOR PIPE UNDERDRAIN DETAILS NOT SHOWN.
- ALL DIMENSIONS ARE IN INCHES UNLESS OTHERWISE SHOWN.



SECTION G-G



SECTION L-L

REVISIONS	
NAME	DATE

ILLINOIS DEPARTMENT OF TRANSPORTATION
BRIDGE APPROACH PAVEMENT CONNECTOR (PCC) SPECIAL
SHEET 1 OF 3
DRAWN BY
CHECKED BY
SCALE: VERT. / HORIZ.
DATE

PLOT DATE = 4/18/2008
 PLOT SCALE = 5/8" = 1'-0"
 USER NAME = shouphz