

F.A.P. R.T.E.	SECTION	COUNTY	TOTAL SHEETS	SHEET NO.
669	11W-3,RS-8*	TAZEWELL	442	248

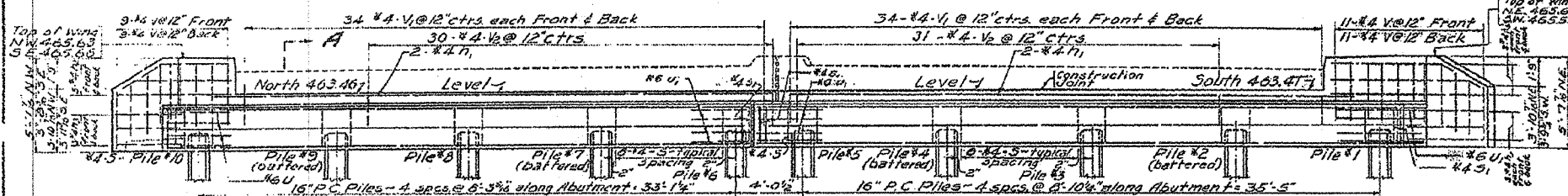
\*11BR-1, 11BR-2

# FOR INFORMATION ONLY

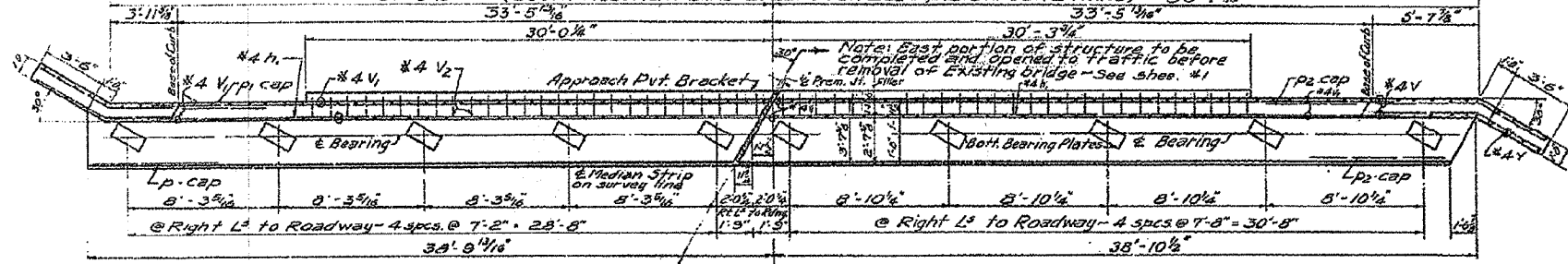
STATE OF ILLINOIS  
DEPARTMENT OF PUBLIC WORKS & BUILDINGS  
DIVISION OF HIGHWAYS

WORK NO.	SECTION	COUNTY	TOTAL SHEETS	SHEET NO.
11BR	Tazewell	16	7	7

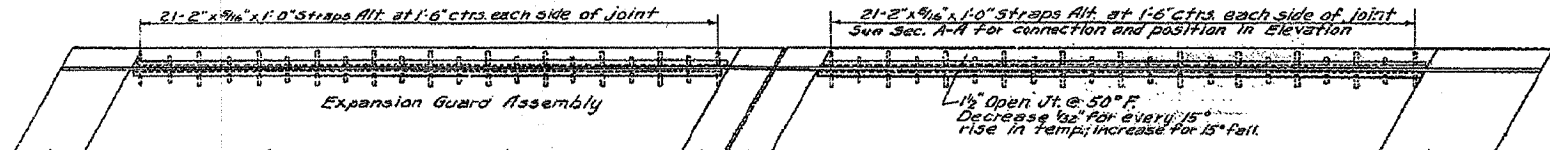
J SHEETS



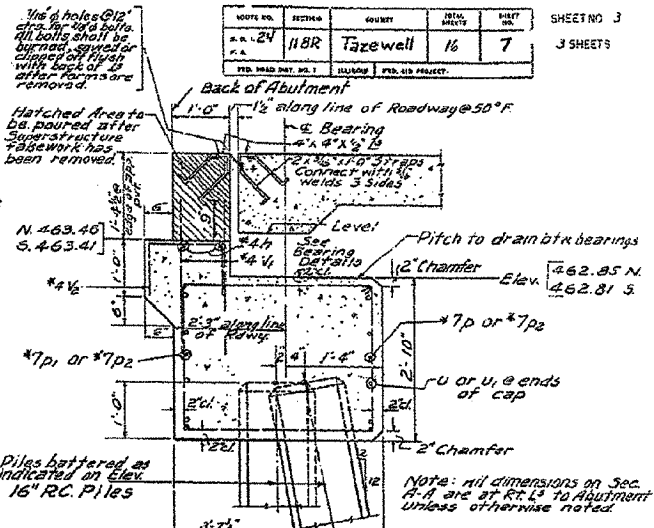
**ELEVATION-NORTH ABUTMENT LOOKING NORTH**  
(SOUTH ABUTMENT SAME EXCEPT FOR ELEV. & IS OPPOSITE HAND)



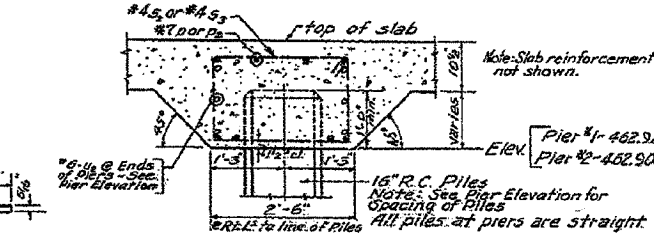
**PLAN-NORTH ABUTMENT**  
(South Abutment same except opposite hand)



**PLAN OPEN JOINT-NORTH ABUTMENT**  
(South Abutment similar but opposite hand)



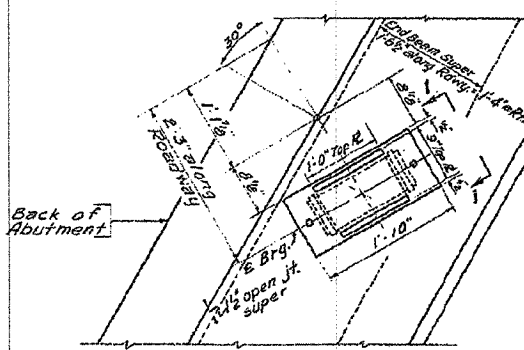
**SECTION A-A**



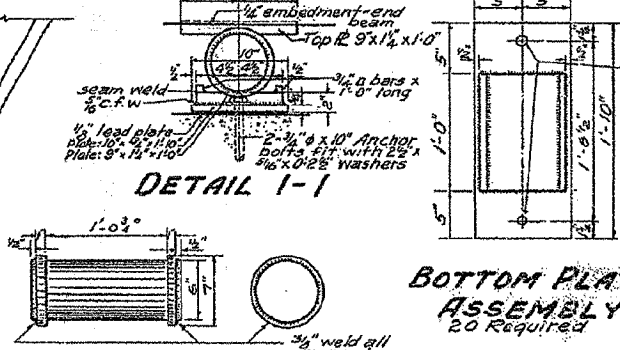
**TYPICAL SECTION THROUGH PILE BENT PIERS #1 & #2**



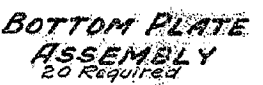
**EXPANSION GUARD STRAP DETAIL**  
10B Required



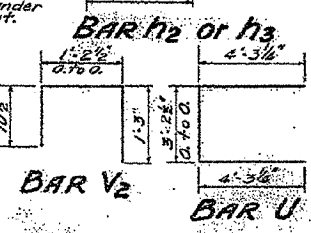
**TYPICAL PLAN-ABUTMENT BEARING**



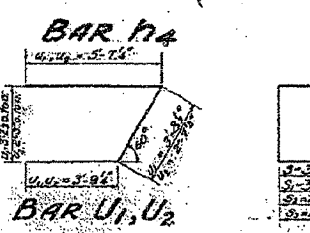
**DETAIL OF ROLLER**  
20 Required



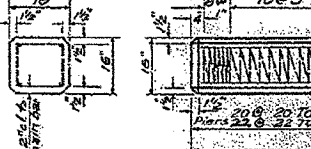
**BOTTOM PLATE ASSEMBLY**  
20 Required



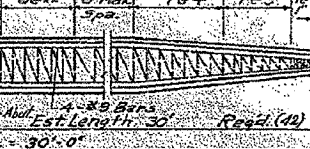
**BAR h2 or h3**



**BAR h4**



**BAR V2**



**BAR U**

**PILE DATA**  
Type: Reinforced Concrete  
Capacity: 20 Ton @ 45 ft  
Length: 22 Ton @ Piers  
Number: 42

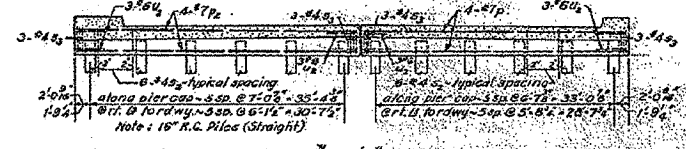
**BILL OF MATERIALS**

BAR	NO.	SIZE	LENGTH	SHAPE
h1	8	#4	35'-0"	
h2	12	#4	8'-0"	
h3	24	#4	5'-8"	
h4	12	#4	9'-9"	
V	80	#4	3'-9"	
V1	272	#4	2'-9"	
V2	122	#4	3'-4"	
P	22	#7	36'-6"	
D1	6	#7	38'-0"	
D2	28	#7	39'-0"	
U1	3	#6	11'-9"	
U2	24	#6	13'-1"	
U3	24	#6	12'-0"	
S	136	#4	12'-6"	
S1	14	#4	13'-7"	
S2	120	#4	8'-7"	
S3	24	#4	9'-3"	

Class X Concrete	Cu. Yds.	66.9
Reinforcement Bars	Lbs.	8890
Precast Concrete Piles	Lin. Ft.	1260
Test Piles	Each	2
Structural Steel	Lbs.	9120

**SUBSTRUCTURE**  
S.B.I. RT. 24 SEC. 11BR

ST.A. 275 + 75  
TAZEWELL COUNTY



**ELEVATION PIERS #1 & #2 LOOKING SOUTH**  
(Note: See sheet 11K for Pile Locations in Plan)



**DETAIL OF 16" PRECAST CONCRETE PILES**

DESIGNED	Chas. J. McLaughlin	EXAMINED	DEC. 21 1954
CHECKED	Chas. J. McLaughlin	PASSED	
DRAWN	C. J. McLaughlin	APPROVED	
CHECKED	P. J. C., C. J. McLaughlin		

OFFICE - 145 S. 21st St., Chicago, Ill. 60604  
TELEPHONE - 312-321-1111  
FAX - 312-321-1111