

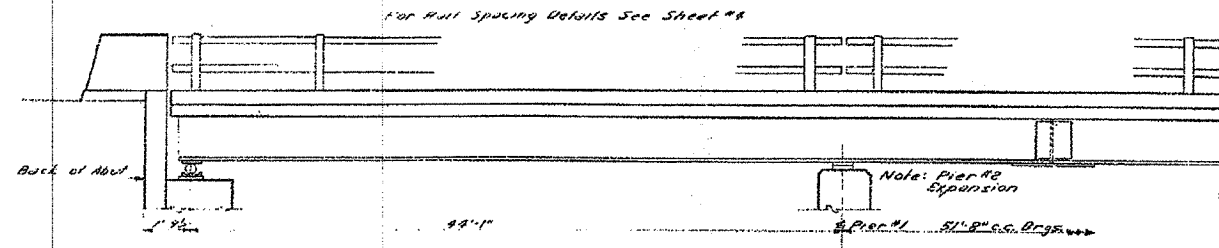
F.P. R.T.E.	SECTION	COUNTY	TOTAL SHEETS	SHEET NO.
669	11W-3.RS-8.	TAZEWELL	442	250

\* 11BR-1, 11BR-2

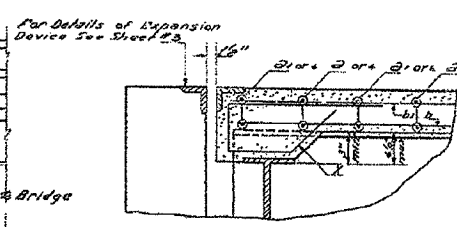
ROUTE NO.	SECTION	COUNTY	TOTAL SHEETS	SHEET NO.	SHEET NO. 2
11BR	Tazewell	15	9	7	7 SHEETS

# FOR INFORMATION ONLY

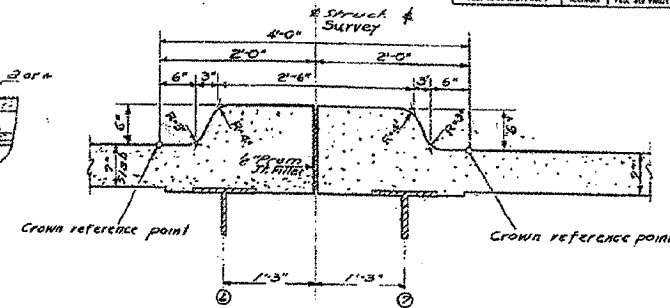
STATE OF ILLINOIS  
DEPARTMENT OF PUBLIC WORKS & BUILDINGS  
DIVISION OF HIGHWAYS



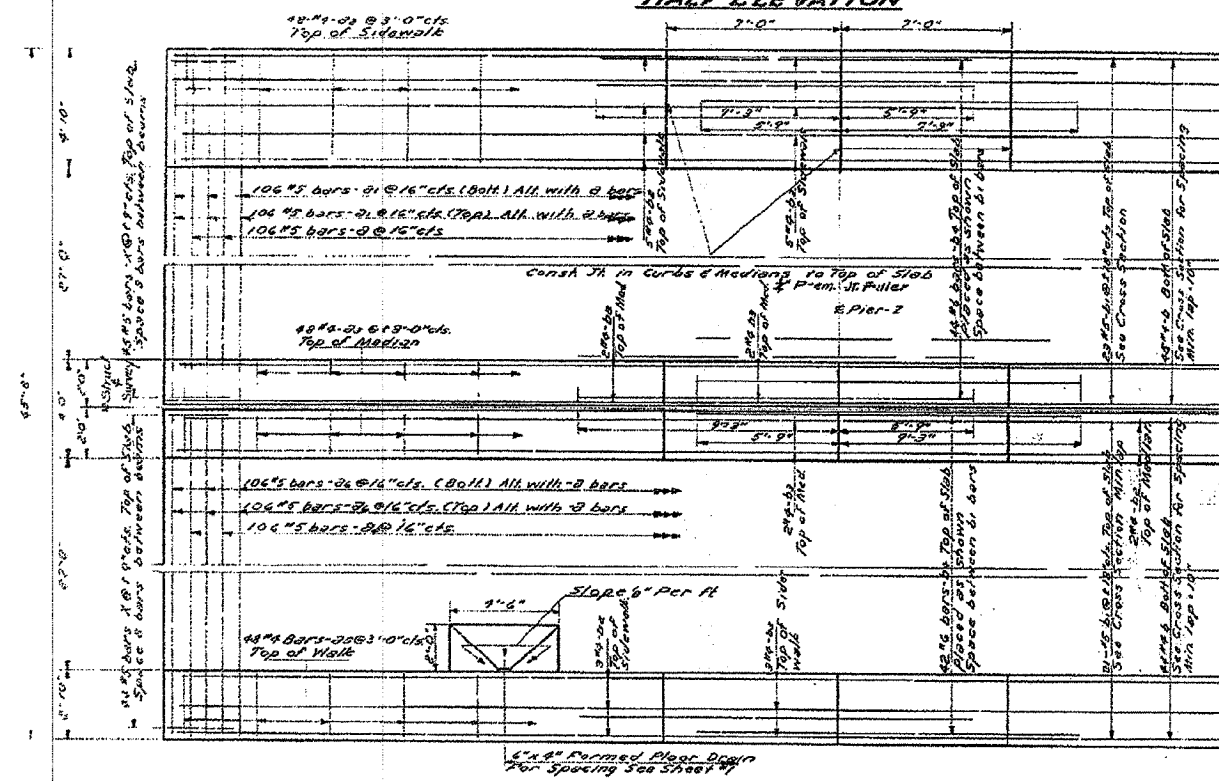
HALF ELEVATION



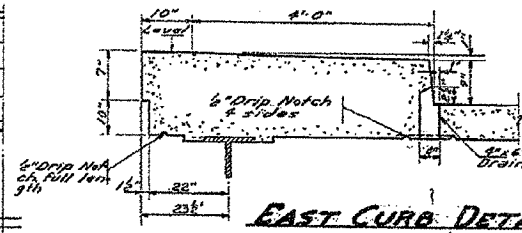
SEC AT END OF SLAB



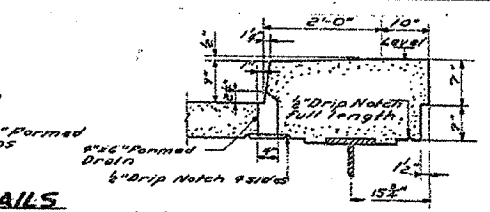
DETAILS AT MEDIAN STRIP



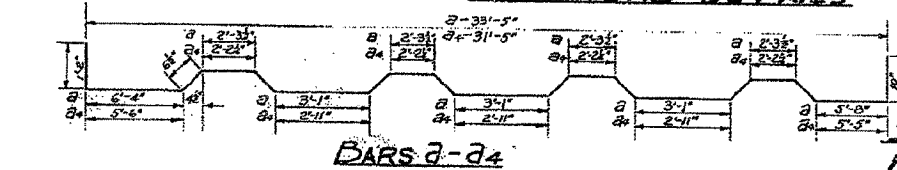
HALF PLAN



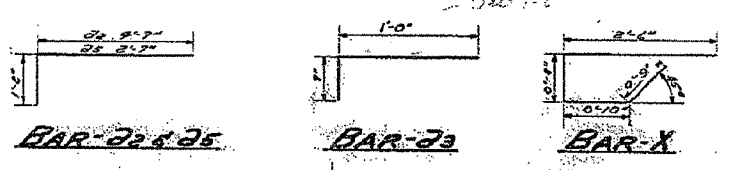
EAST CURB DETAILS



WEST CURB DETAILS



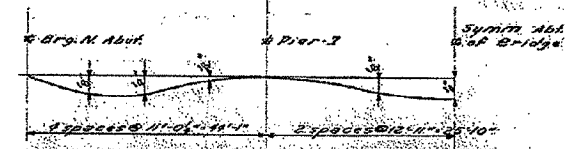
BAR 2-24



BAR 22 & 25

BAR 23

BAR X



D.L. DEFLECTION DIAGRAM

## SUPERSTRUCTURE

### BILL OF MATERIALS

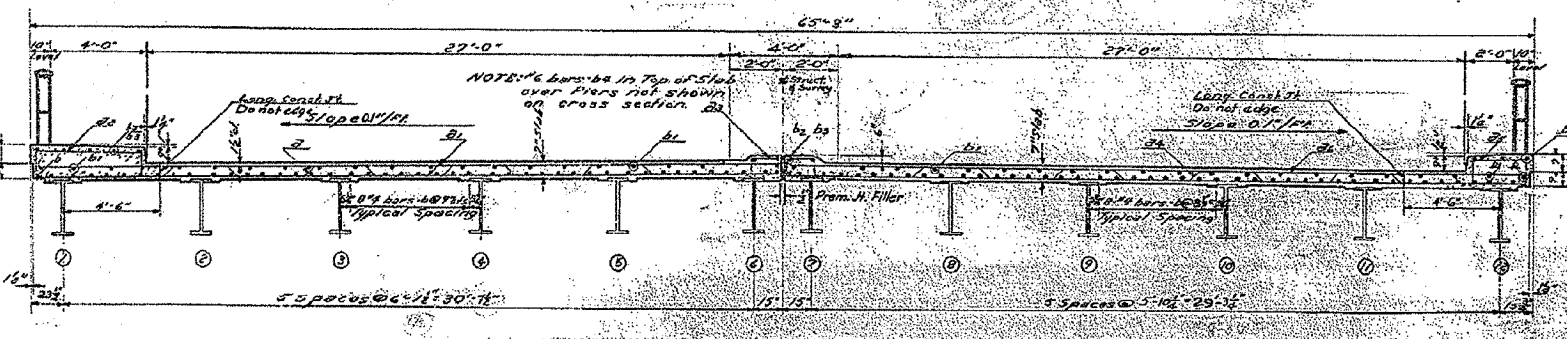
BAR NO.	NO.	SIZE	LENGTH	SHAPE
2	106	#5	36'-9"	
21	212	#4	33'-6"	
22	48	#4	3'-9"	
23	96	#4	1'-0"	
24	106	#5	34'-9"	
25	48	#4	3'-9"	
26	212	#5	31'-6"	
X	356	#4	3'-0"	
A	176	#6	34'-3"	
B	36	#4	37'-6"	
C	48	#4	4'-9"	
D	176	#6	15'-0"	
X	176	#5	4'-9"	

CLASS 'X' Concrete Curb 247.3  
Reinforcement Bars 450.00  
Structural Steel 468.237380  
Name Plates Each one

## METHOD OF DETERMINING FILLET HEIGHTS "C"

After all structural steel has been erected elevations of the top flanges of the beams shall be taken at intervals that to exceed 10' from these elevations subtract the increment of deflection for these points determined from the D.L. Deflection Diagram. The elevations so obtained subtracted from the theoretical grade elevations, minus their thickness equals the fillet heights above top of beam.

DESIGNED T.D. GORDON	DATE DEC 31 1954
CHECKED S. HARRIS	APPROVED R.R. BENTLEY
DRAWN T.D.G.	
CHECKED C.L.L.	



CROSS SECTION

SUPERSTRUCTURE  
S.B.T. RT. 24 SEC. 11-BR  
TAZEWELL COUNTY  
STA. 302+04