

F.P. R.T.E.	SECTION	COUNTY	TOTAL SHEETS	SHEET NO.
669	11W-3-RS-8	TAZEWELL	442	251

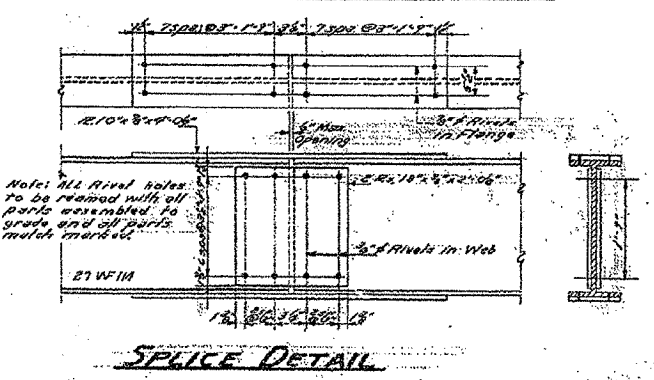
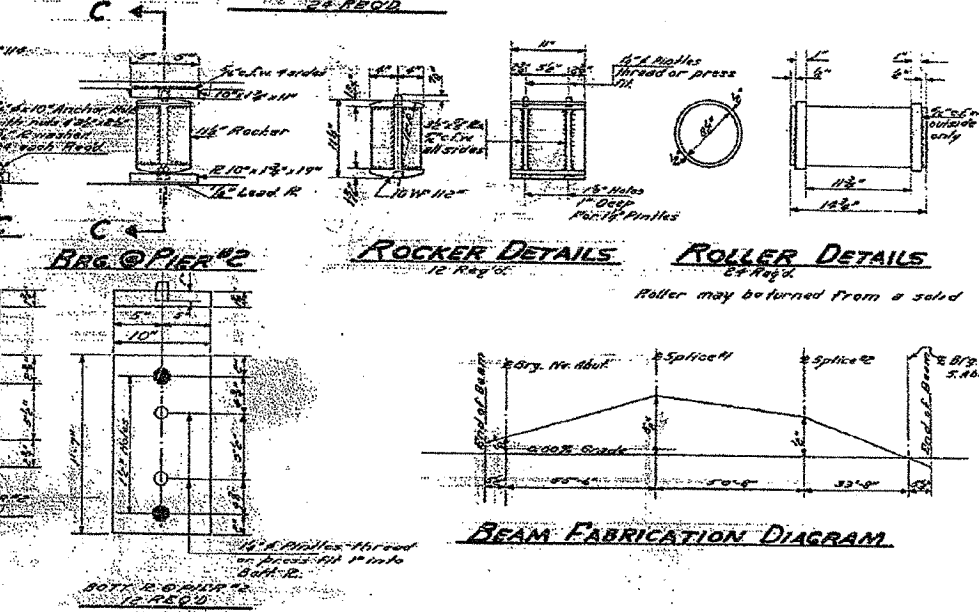
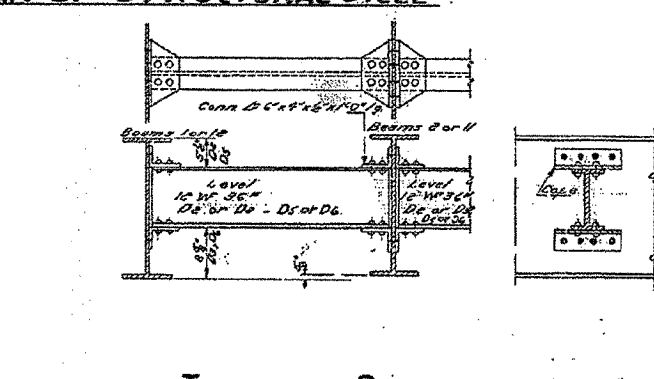
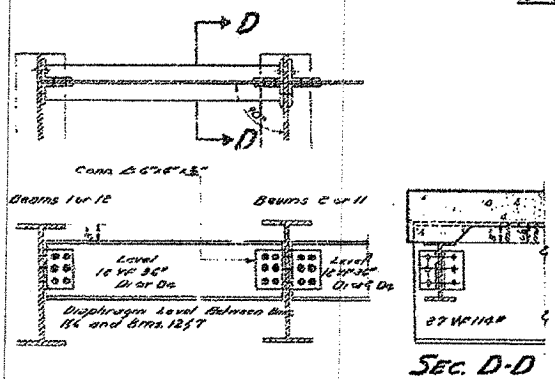
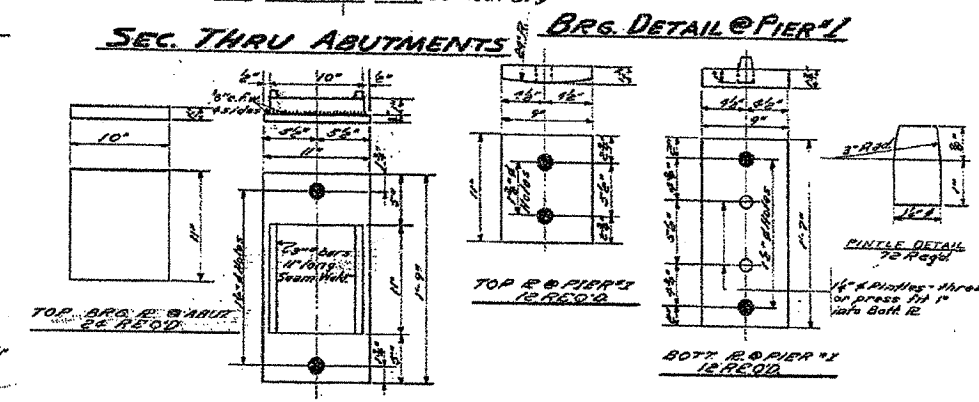
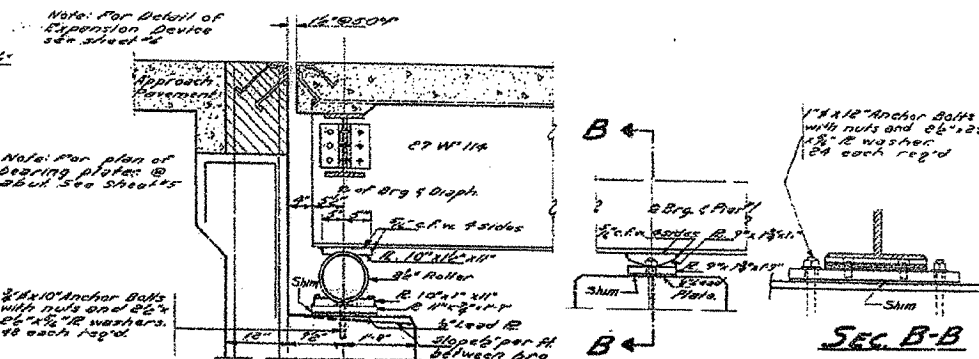
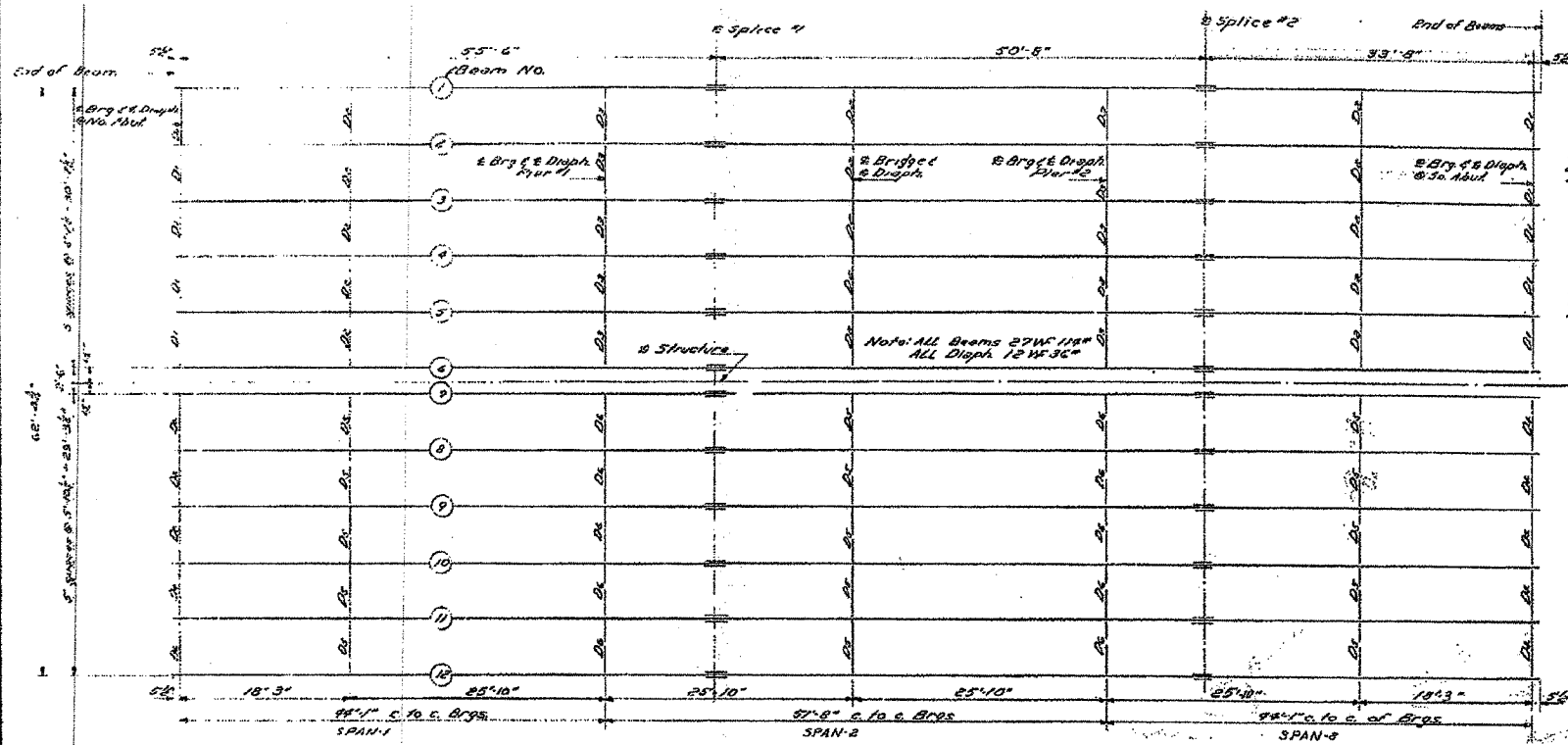
* 11BR-1, 11BR-2

ROUTE NO.	SECTION	COUNTY	TOTAL SHEETS	SHEET NO.
11W-3	11BR	Tazewell	10	10

SHEET NO. 3
7 SHEETS

FOR INFORMATION ONLY

STATE OF ILLINOIS
DEPARTMENT OF PUBLIC WORKS & BUILDINGS
DIVISION OF HIGHWAYS



SHIM PLATE THICKNESS FOR BRGS.

Beam No.	1	2	3	4	5	6	7	8	9	10	11	12
Thickness	0	5	5	5	5	5	5	5	5	5	5	5

STRUCTURAL STEEL
S.B.I. RT. 24 SEC. 11-BR
TAZEWELL CO.
STA. 3.02+04

DESIGNED T.D. GORDON
CHECKED E. H. HARRIS
DRAWN E.D.G.
CHECKED F.C.L.

EXAMINED
PASSED
APPROVED

DEC. 21 1954