

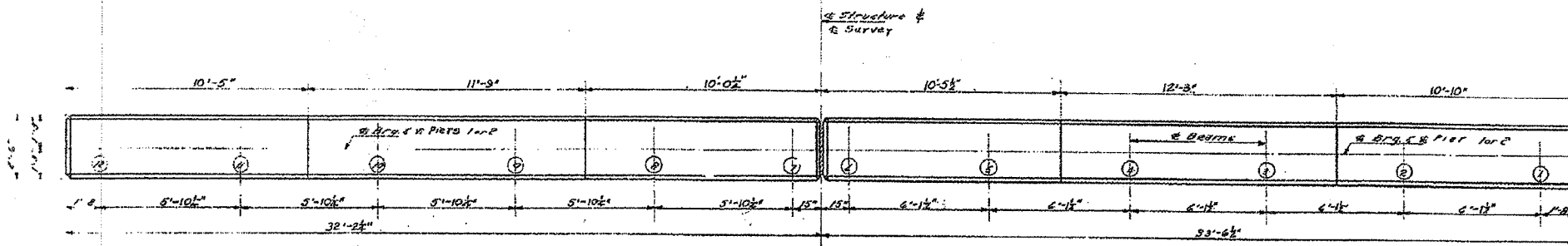
F.A.P. R.T.E.	SECTION	COUNTY	TOTAL SHEETS	SHEET NO.
669	11W-3.RS-8*	TAZEWELL	442	254

ROUTE NO.	SECTION	COUNTY	TOTAL SHEETS	SHEET NO.
11BR	11BR	Tazewell	16	13

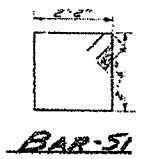
SHEET NO. 4
7 SHEETS

FOR INFORMATION ONLY

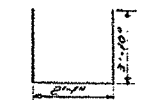
STATE OF ILLINOIS
DEPARTMENT OF PUBLIC WORKS & BUILDINGS
DIVISION OF HIGHWAYS



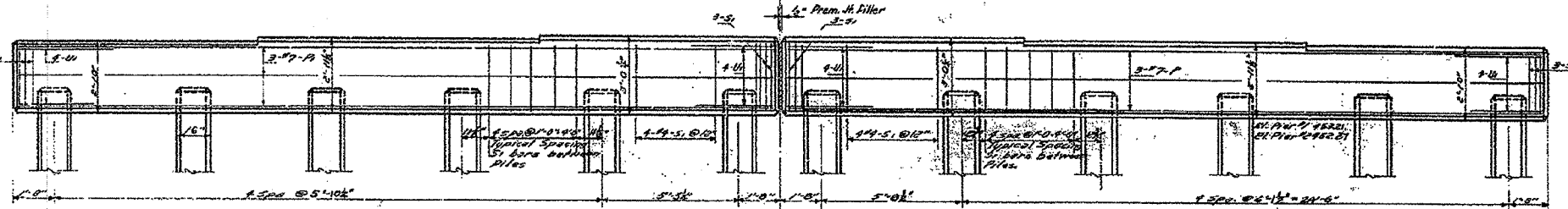
PLAN OF PIERS 1 & 2
Looking North



BAR-SI

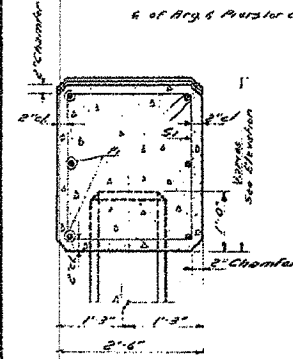


BAR-UI

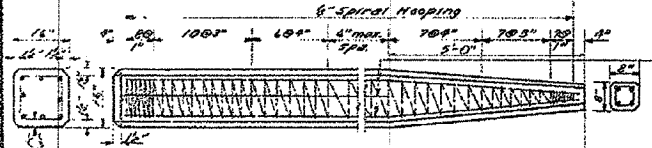


ELEVATION PIERS 1 & 2
Looking North

Note: All Piles are Precast Concrete Piles.
12\"/>

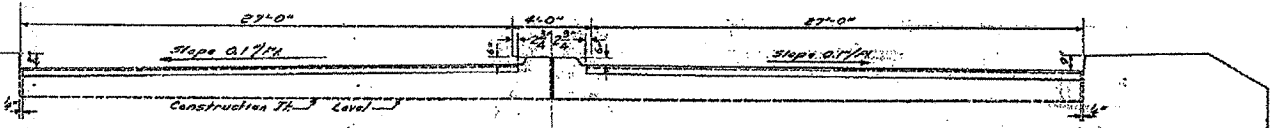


SEC THRU PIER 1 & 2



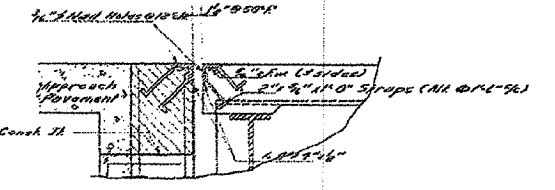
DETAIL OF PRECAST CONG. PILES

Note to Contractor: For pile lengths up to 45' use two slings placed at a distance of 0.21 L from each end. Do not longer than 45' use three slings placed at 1/3 L from each end and at mid-point of pile.

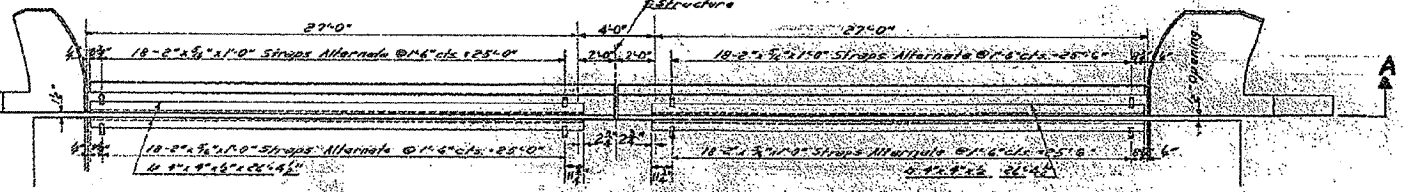


SECTION A-A

Note: The Roadway Expansion Device shall be Marked to fit Roadway.
Estimated Weight 3070 Lbs.
Included as Structural Steel on Sheet #2



SEC THRU EXPANSION DEVICE



PLAN OF EXPANSION DEVICE

BILL OF MATERIAL
PIER 1 AND PIER 2

BAR NO.	SIZE	LENGTH	QTY
S1	120	24	101
P	12	27	33-3
P	12	27	32-0
U	32	40	9-9

Gross Concrete Ckts. 36.6
 Reinforcement Bars Lbs. 2880
 Test Piles (U) Each 2
 Precast Conc. Piles (S1) 1024

DESIGNED T.D. GORDON E.M.M.	DEC 21 1954
CHECKED E. ALLEN - V.L. CHAN	
APPROVED P. GROSSCH	
CHECKED F. J. HAN	

PIERS
S&T Rt 24 Sec. 11-BR
TAZEWELL COUNTY
STA 302+04

Drawn by S&T - 11BR - Station 302+04 from 2" Piles 18.5" dia. on center - Piers 18.5" dia. on center - Sec. A-A
4" Scale of Piers added on Piers at Piles 18.5" dia. on center - Sec. A-A