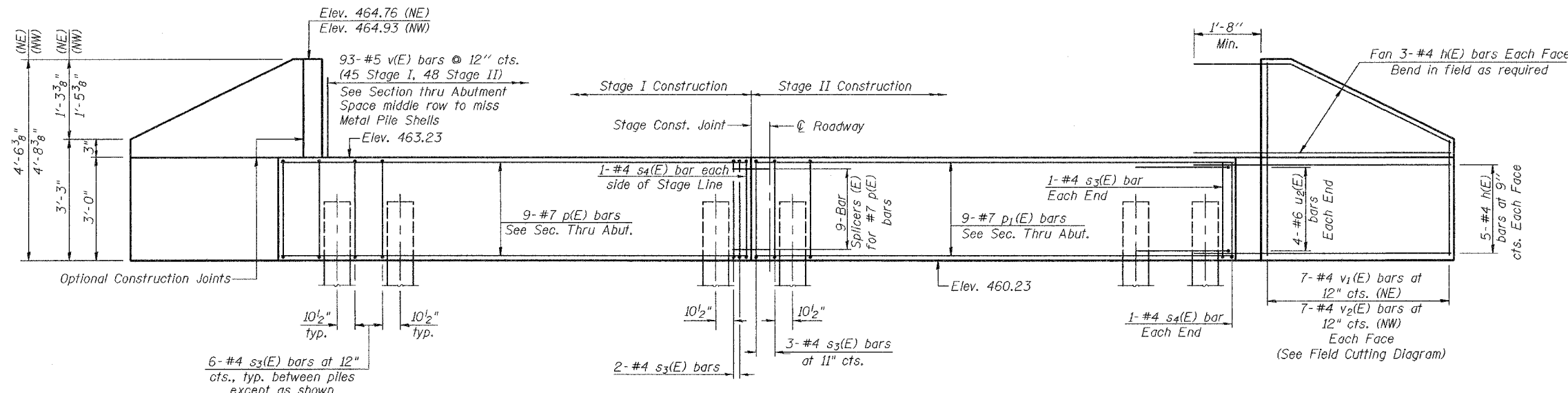


STATE OF ILLINOIS
DEPARTMENT OF TRANSPORTATION

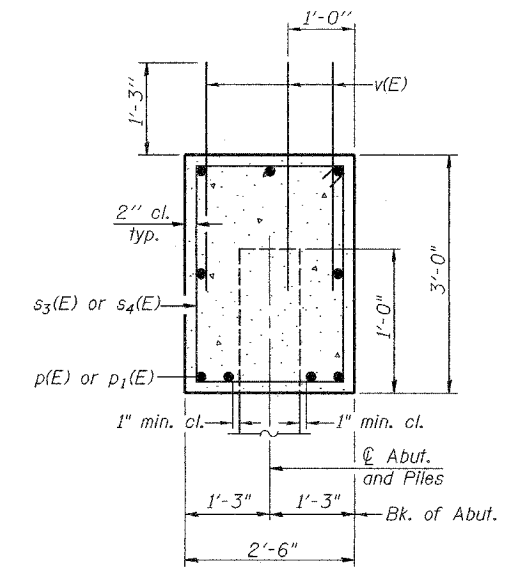
ROUTE NO.	SECTION	COUNTY	SHEETS	SHEET NO.
F.A.P. 669	11BR-2	TAZEWELL	442 263	14 SHEETS
FED. ROAD DIST. NO. 7		ILLINOIS FED. AID PROJECT		

Contract #88804

Notes:
Pour steps monolithically with cap.
Reinforcement bars designated (E)
shall be epoxy coated.
For bar splicer details see sheet 11 of 14.



ELEVATION
(Looking North)

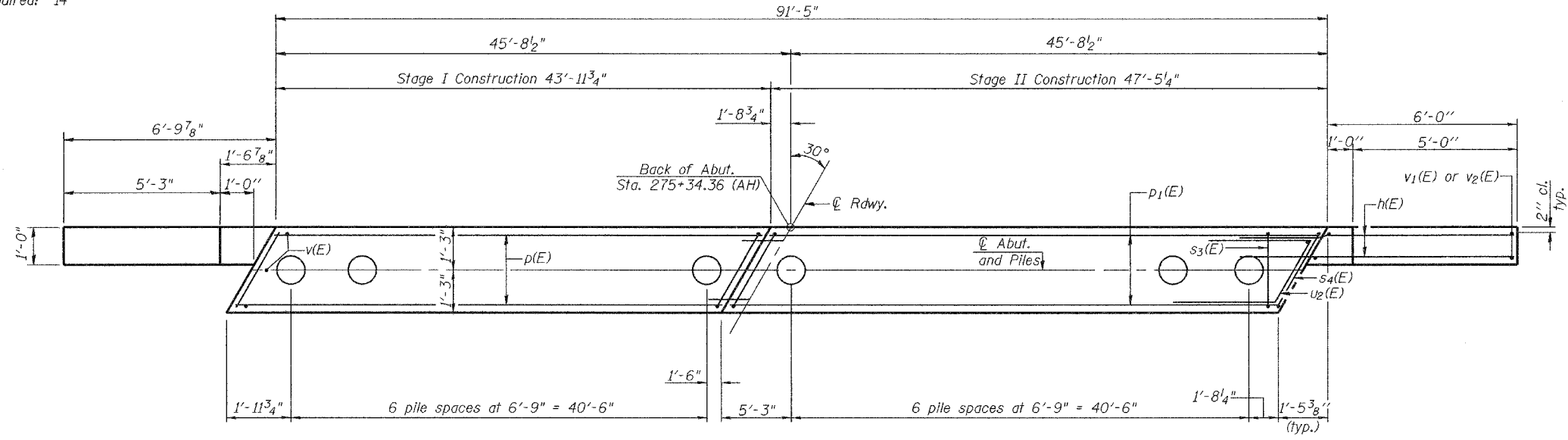


SECTION THRU ABUTMENT

Horizontal Dimensions @ Rt. L's to Abutments.

PILE DATA

Type: 14" ϕ Metal Pile Shells
Design Capacity: 35 Ton
Est. Length: 47'
No. Required: 14

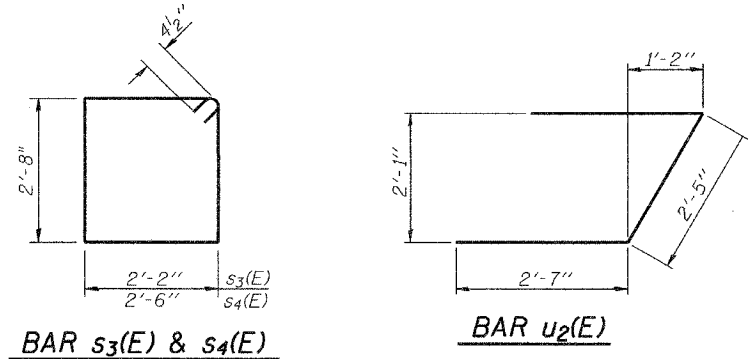


PLAN



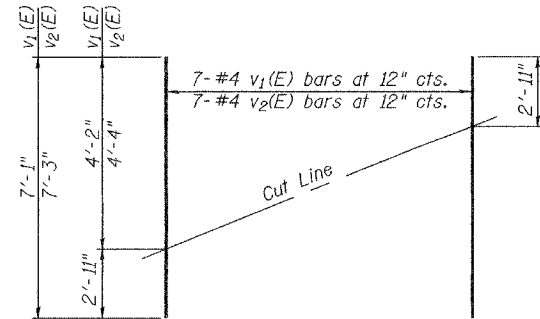
BILL OF MATERIAL

Bar	No.	Size	Length	Shape
h(E)	32	#4	8'-9"	—
p(E)	9	#7	43'-7"	—
p1(E)	9	#7	47'-1"	—
s3(E)	79	#4	10'-5"	□
s4(E)	4	#4	11'-1"	□
u2(E)	8	#6	7'-7"	┌
v(E)	279	#5	2'-6"	—
v1(E)	14	#4	7'-1"	—
v2(E)	14	#4	7'-3"	—
Concrete Structures		Cu. Yd.	27.3	
Reinforcement Bars, Epoxy Coated		Pound	3390	
Structure Excavation		Cu. Yd.	142.6	
Furnishing Metal Pile Shells 14" ϕ		Foot	658	
Driving & Filling Shells		Foot	658	



BAR s3(E) & s4(E)

BAR u2(E)



FIELD CUTTING DIAGRAM

Order v1(E) and v2(E) full length. Cut as shown and use remainder of bars in opposite face.

DESIGNED	Philip E Coppernoll
CHECKED	Roy Ahanchi
DRAWN	Amber M. Seiber
CHECKED	PEC/GRA

EXAMINED *Thomas J. Demagaleki*
PASSED *Ralph E. Anderson*
MAY 5 2006
ENGINEER OF BRIDGE DESIGN
ENGINEER OF BRIDGES AND STRUCTURES

NORTH ABUTMENT
F.A.P. ROUTE 669-SEC. 11BR-2
TAZEWELL COUNTY
STATION 275+77.36
STRUCTURE NO. 090-0174