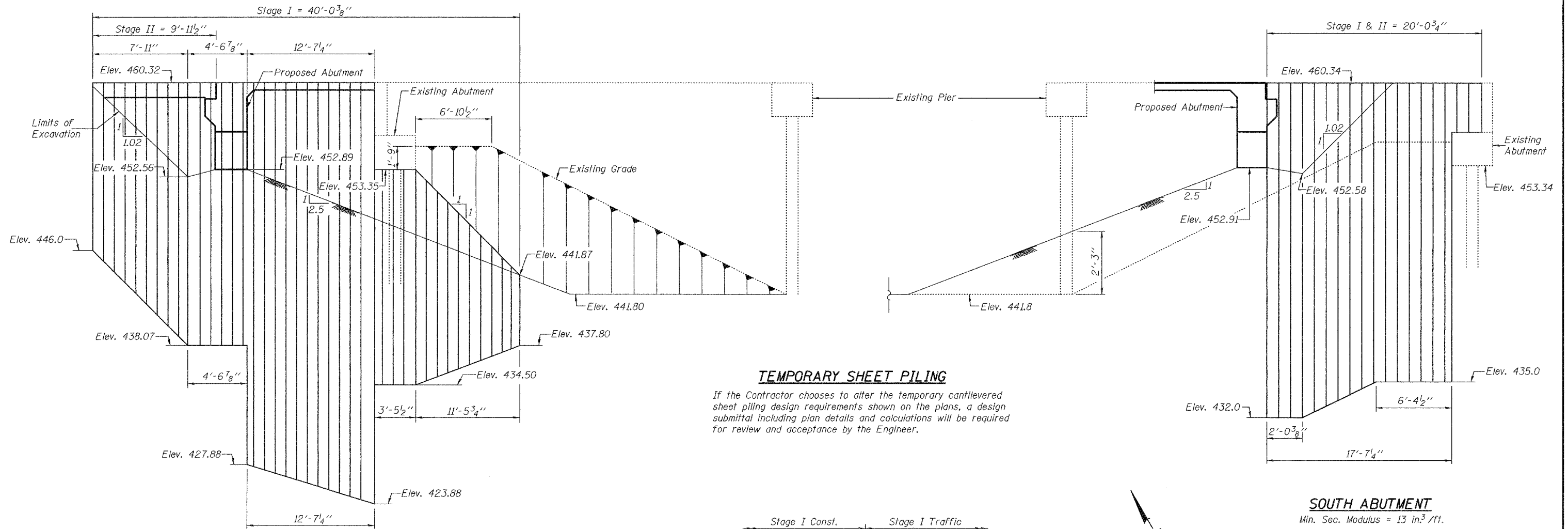


STATE OF ILLINOIS
DEPARTMENT OF TRANSPORTATION

ROUTE NO.	SECTION	COUNTY	TOTAL SHEETS	SHEET NO.
F.A.P. 669	IIBR-1	TAZEWELL	442	272
FED. ROAD DIST. NO. 7	ILLINOIS	FED. AID PROJECT		

SHEET NO. 3
32 SHEETS
Contract #88804

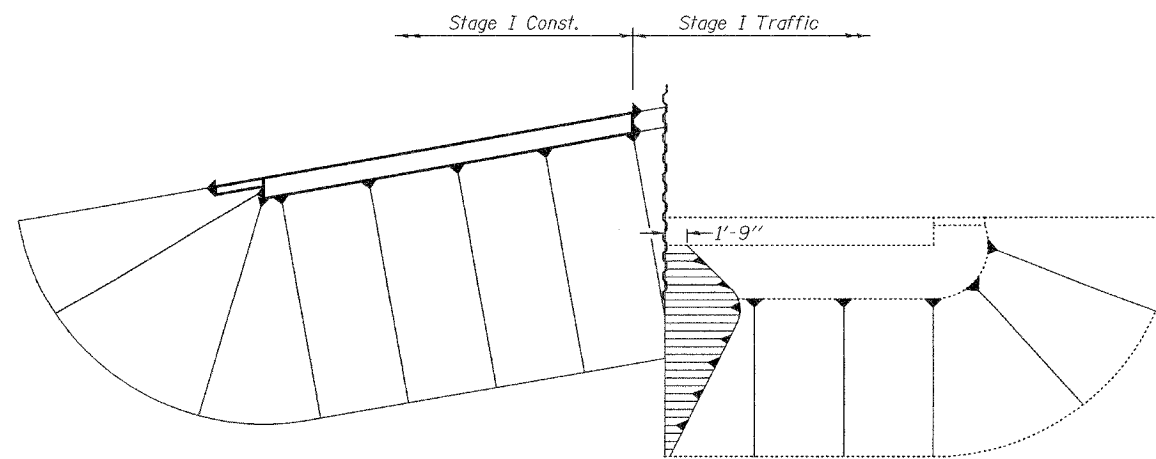


NORTH ABUTMENT

Min. Sec. Modulus = 17 in.³/ft.

SOUTH ABUTMENT

Min. Sec. Modulus = 13 in.³/ft.



NORTH ABUTMENT PLAN VIEW

TEMPORARY SHEET PILING DETAILS
F.A.P. ROUTE 669 - SECTION IIBR-1
TAZEWELL COUNTY
STATION 301+87.90
STRUCTURE NO. 090-0172

DESIGNED	T.L.K.
CHECKED	A.M.J.
DRAWN	BECKY M. LEACH
CHECKED	A.M.J. & P.E.C.

May 10, 2006
EXAMINED *Thomas J. Damagala*
ENGINEER OF BRIDGE DESIGN
PASSED *Ralph E. Anderson*
ENGINEER OF BRIDGES AND STRUCTURES