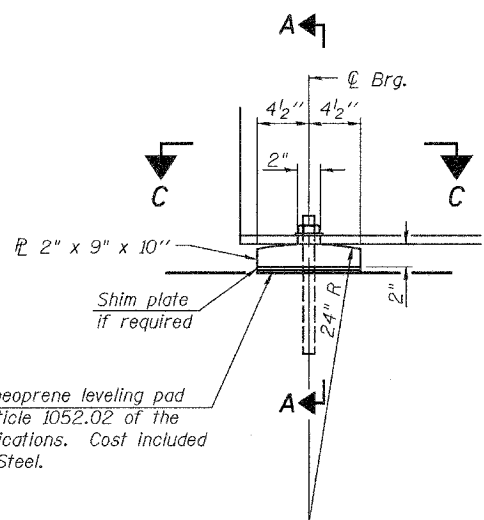


STATE OF ILLINOIS
DEPARTMENT OF TRANSPORTATION

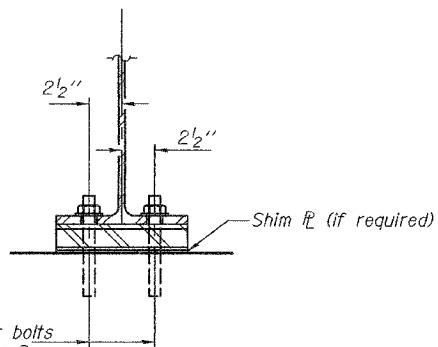
ROUTE NO.	SECTION	COUNTY	TOTAL SHEETS	SHEET NO.	SHEET NO. 14
F.A.P. 669	11BR-1	TAZEWELL	442	283	32 SHEETS
FED. ROAD DIST. NO. 7	ILLINOIS	FED. AID PROJECT-			

Contract #88804



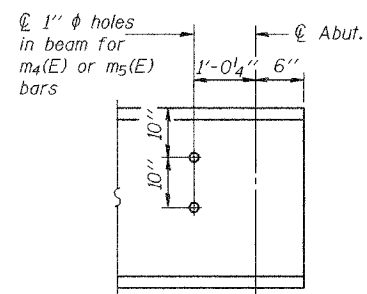
1/8" elastomeric neoprene leveling pad according to Article 1052.02 of the Standard Specifications. Cost included with Structural Steel.

ELEVATION AT ABUTMENT

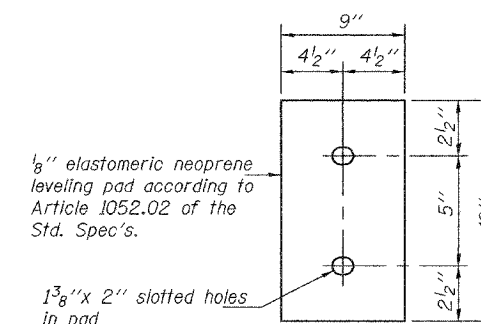


1" ϕ x 1'-0" anchor bolts with 2 1/4" x 2 1/4" x 5/16" plate washer under nut. 1 3/8" x 2" slotted hole in bottom flange. 1/2" ϕ holes in bearing plate.

SECTION A-A



END OF BEAM ELEVATION



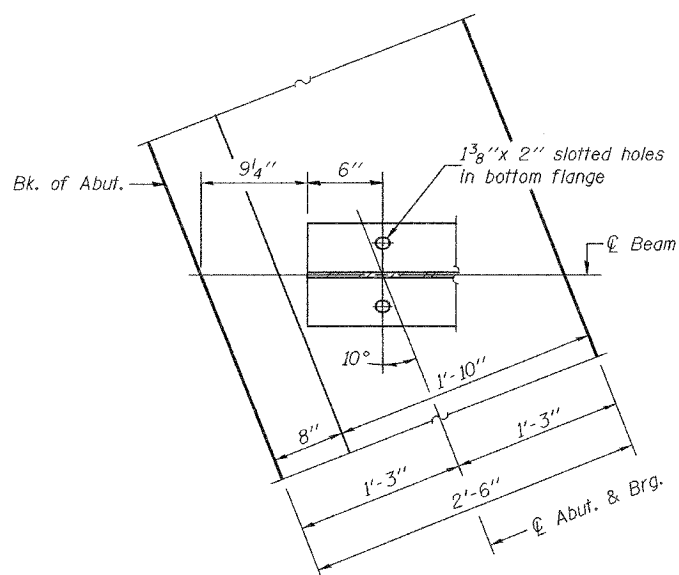
1/8" elastomeric neoprene leveling pad according to Article 1052.02 of the Std. Spec's.

1 3/8" x 2" slotted holes in pad

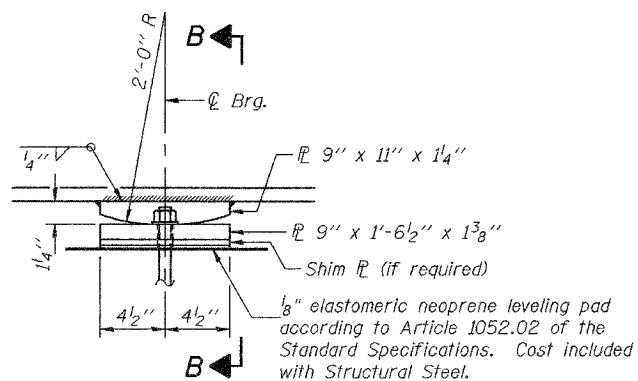
PLAN-ELASTOMERIC NEOPRENE LEVELING PAD
(At abutments)

FIXED BEARING
(30 Required)

Notes: Anchor bolts at fixed bearings may be built into the masonry.
See sheet 15 of 32 for Anchor Bolt installation.

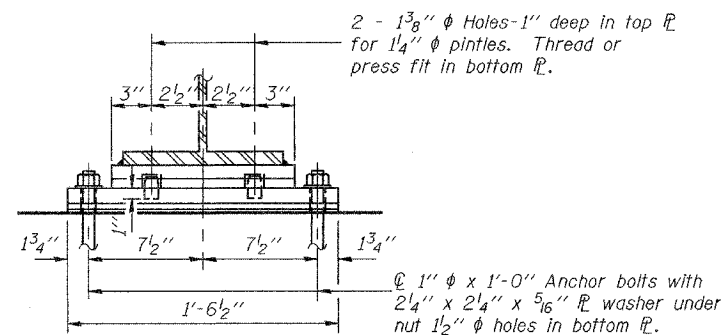


SECTION C-C

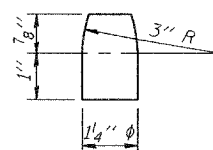


ELEVATION AT PIER

FIXED BEARING
(30 Required)



SECTION B-B



PINTLE

DESIGNED	T.L.K.
CHECKED	A.M.J.
DRAWN	BECKY M. LEACH
CHECKED	A.M.J. & P.E.C.

EXAMINED	Thomas J. Damgalak	May 18, 2006
PASSED	Ralph E. Anderson	

BEARING DETAILS
F.A.P. ROUTE 669 - SECTION 11BR-1
TAZEWELL COUNTY
STATION 301+87.90
STRUCTURE NO. 090-0172